

Attendance Network Meeting

Welcome

February 2025

Andrea Jordan – Inclusion Lead with strategic responsibility for Attendance

Andrea.jordan@gloucestershire.gov.uk

Living our values every day



Accountable



Integrity



Empower



Respect



Excellence



Education Inclusion Service

'The right support at the right time'

Education Inclusion Service (EIS) | Gloucestershire County Council

Living our values every day




Accountable



Integrity



Empower



Respect

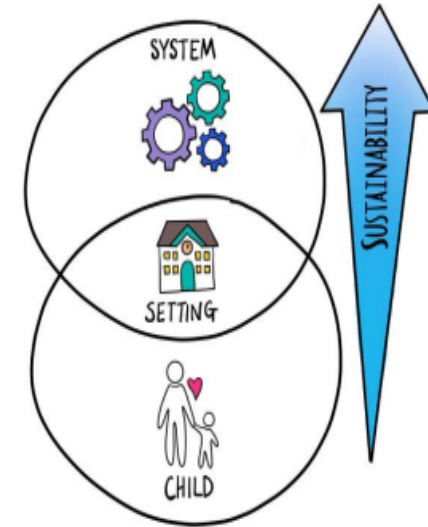


Excellence



What we do

- The Education Inclusion Service (EIS) sits within the Education Hub in GCC's Children's Services. Our focus is on ensuring children with additional needs are supported to remain in school and achieve, through:
 - meeting statutory duties for attendance, exclusion (including Alternative Provision), home education (EHE), and children in employment & entertainment (CIEE)
 - supporting families and education settings in the development of inclusive practice and environments, ensuring children and young people have access to an education appropriate to meet their needs.
 - supporting families and education settings to take early holistic action to address previous trauma, emerging issues, and prevent escalation for children with no SEN and at SEN Support, all of whom are not in care.
- We are a multifaceted inclusion service that strengthens the LA's approach to inclusive practice. Alongside our significant statutory responsibilities, our aim is to play a lead role in the County's shared journey towards 'System Cohesion': everyone working together to ensure those working with children, young people, and their families have the skills, knowledge, and support systems around them to create a fully inclusive system that meets needs and puts **the right support at the right time**.



Living our values every day



Accountable



Integrity



Empower



Respect



Excellence

Within EIS, we also have the MASH Education team; while they sit in the MASH, they are a key part of the Education Directorate



How we work and who we work with:

- We work in partnership with primary and secondary schools in Gloucestershire, both maintained and academies. We work closely with school staff including Headteachers, Governors, Senior Leaders, SENCos, pastoral leads, and attendance officers in these schools. We work primarily to support schools with children within statutory school age, including children from YR to Y11.
- Our role is limited with Special Schools (the EHCP Service work primarily with the Special Schools).
- Our service provides advice, guidance, and support for schools around provision for children and young people with no SEN and at SEN Support, all of whom are not in care *
- We aim to work in partnership with schools, predominantly at the preventative, early intervention stages of the Levels of Intervention (L1 Universal, L2 Additional); in addition, some of our work also supports at L3 (Intensive) and L4 (Specialist) within the Levels of Intervention.
- We work collaboratively and in partnership with many agencies and services, both formally and informally, and help facilitate multi-agency working where appropriate.
- Alongside our statutory EHE role, we pride ourselves in working proactively with the county's EHE community.
- Our CiEE statutory role also allows us opportunities to work closely with members of the public within the realms of child employment and entertainment.

**Please note the following for children and young people:*

- Those with an EHCP are supported by the EHCP Service
- Those who are in the care of Gloucestershire are supported by GCC's Virtual School
- Those who are in Early Years settings (preschools, nurseries, etc) are supported by the Early Years' Service
- Those who are Post 16 are supported by **Prospects** and the **Post 16 Service**; we support transition to YST

Living our values every day



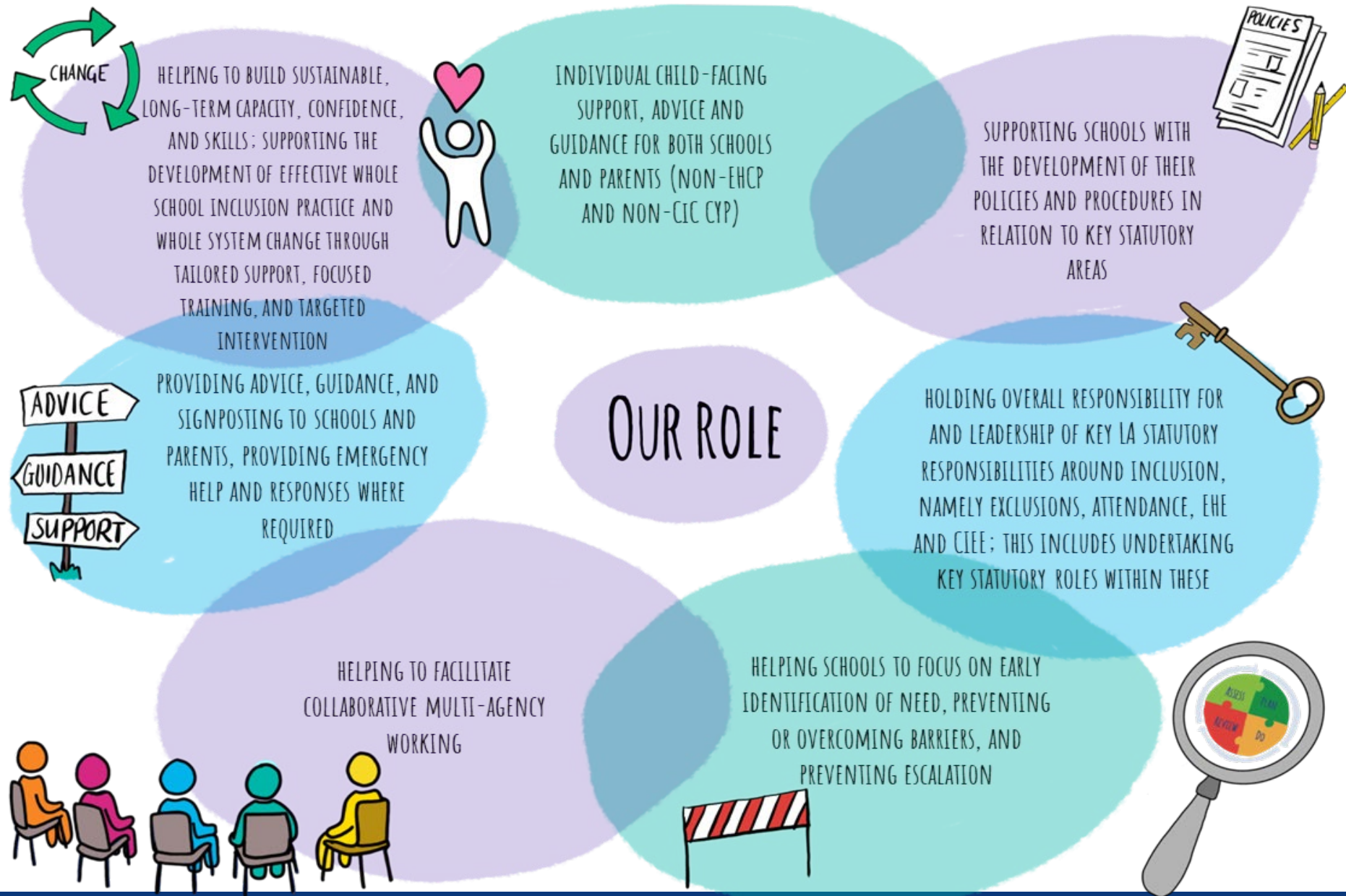
Accountable



Integrity



Empower



<div> <div>Lisa Meggs</div> <div>Strategic Lead for Education Inclusion</div> </div>		
	Strategic And Operational Oversights:	
<div>Vikki Burt</div> <div>Inclusion Lead and line manager</div> <div>Cheltenham and Tewkesbury, plus oversights</div> <div>System and school level inclusion</div>	<ul style="list-style-type: none"> Exclusion processes and statutory roles Child employment and entertainment (CIEE) Mental health link Inclusion Baseline / Framework Matrix management of CIEE and exclusions 	<ul style="list-style-type: none"> Outcome Coordinators Enhanced Inclusion Officers Inclusion Officers
<div>Cilla James</div> <div>Inclusion Lead and line manager</div> <div>Gloucester and Forest, plus oversights</div> <div>System and school level inclusion</div>	<ul style="list-style-type: none"> Elective Home Education Service safeguarding lead S19 link Nav Hub Matrix management of EHE 	<ul style="list-style-type: none"> Outcome Coordinators Enhanced Inclusion Officers Inclusion Officers
<div>Andrea Jordan</div> <div>Inclusion Lead and line manager</div> <div>Stroud and Cotswold, plus oversights</div> <div>System and school level inclusion</div>	<ul style="list-style-type: none"> Improving attendance and reducing absence Attendance statutory roles, including TSMs and legal Social Care, Early Help, and Virtual School link Transitions, including Care Leavers Matrix management of attendance 	<ul style="list-style-type: none"> Outcome Coordinators Lead Officer for Legal Attendance Inclusion Officers
<div>Sian Edwards</div> <div>Inclusion Lead and line manager</div> <div>Alternative Provision, Third Sector AP, MMYJ</div> <div>System and school level inclusion</div>	<ul style="list-style-type: none"> Alternative provision, including third sector AP Youth Justice, MACE, Missing, and CE / CSE ‘What Works’ with Social Finance GHES link Matrix management of MMYJ 	<ul style="list-style-type: none"> FAP Outcome Coordinator APS Outcome Coordinator

Current Team Structure

<u>Chelt / Tewks</u> Lead - Vikki Burt Exclusions and CIEE	<u>Stroud / Cotswolds</u> Lead - Andrea Jordan Attendance	<u>Glos / Forest</u> Lead - Cilla James Elective Home Education	<u>APS</u> Lead - Sian Edwards
Outcome Coordinators Brian McGuire Paul Waite Darren Peters Inclusion Officers Laura Nutland Tracey Knight Cath Jones Darren Peters Chris Cooke	Outcome Coordinators Steve Witt Claire Bailey Inclusion Officers Helen Kay Lauren Deponeo Dave Walton Susan Jannah	Outcome Coordinators Gill Rennie Anita King Thalia Guerra Inclusion Officers Brian Gazzard Stacey Baylis Amy Read Sarah Bunce Abbie Hawker	Outcome Coordinators Bev Wall Alice Hibberd Fair Access Outcome Coordinator Toby McGregor
Lead Officer for Legal Intervention in Education (Attendance) Fliss Falconer			

Roles and responsibilities

Inclusion Officer

Each school has an Inclusion Officer who...

- Offer advice and guidance on our 4 statutory areas to school's parents and other agencies
- Are the first port of call for the Education Inclusion Service
- Signpost schools, families and other agencies

Inclusion Officers also:

- Have an EHE case load
- Have areas of oversight and specialisms – Mental health forum, Missing/Mace etc
- Undertake CIEE statutory duties
- Undertake Attendance legal statutory duties

Outcome Coordinators

Each dual locality has 2 OCs who...

- Case hold children
- Ensure that children are able to access an education
- Take a child centered approach
- Support schools and families to meet individual needs
- Work with families, schools and other partner agencies
- Signpost schools, families and other agencies
- Undertake TALC triage
- Attend Nav Hub to represent education

Strategic updates

At the end of January as the PN statistics were publicly reported (for the previous year) Education Secretary Bridget Phillipson said:

"We need a national effort to tackle the epidemic of school absence so we can give children the best start in life – with Government, schools and parents all playing their part."

"This Government will do everything in its power to tackle the problem but behaviour like term-time holidays cannot be changed with support alone – which is why fines have a vital place in our system, so everyone is held accountable for ensuring our children are in school."

Attendance project update

- The Attendance Strategy for Gloucestershire draft is being presented to the Education Leadership Team this month – this has been produced in collaboration with schools, GCC Children's Services Colleagues and third sector organisations eg health, we hope to have this published by the early Summer
- Schools and Health Protocol is being kick started this month with many schools and health colleagues developing this; it is planned to be published at the start of the summer holidays and fully implemented in September 2025
- The workstream 'A multi agency approach to tackling the school attendance crisis' is now under development with discussion about who the group members should be – if you have thoughts on this or you would like to be involved then please do contact Andrea.jordan@gloucestershire.gov.uk as your input is a vital part of this work

Useful links

For Secondary Schools: [Breaking down the barriers to opportunity: South-west Tickets, Fri, Mar 14, 2025 at 9:30 AM | Eventbrite](#)

[DfE - Monitor your school attendance webinar for schools, trusts and LAs Tickets, Tue, Mar 25, 2025 at 12:00 PM | Eventbrite](#)

DfE webinars [Working together to improve school attendance local authority effective practice examples - YouTube](#)

[Attendance toolkit for schools.pdf](#) DfE support

[Gloucestershire Attendance](#) this is the MOST IMPORTANT page you need to view regularly - this is the first place new documents or news will be placed as we request articles for the bulletin board and Heads Up

[Schoolsnet Bulletin Board](#) contains everything that goes in Heads Up or Whats up gov – check this weekly to ensure you receive the most up to date information about education

[Exclusions](#)

[Elective home education](#)

[Children missing education | Gloucestershire County Council](#)



Accountable



Integrity



Empower



Respect



Excellence

