

# Percentage of households which are overcrowded in terms of bedrooms at Lower Super Output Area Level, 2021

This map uses the 2021 LSOA boundaries

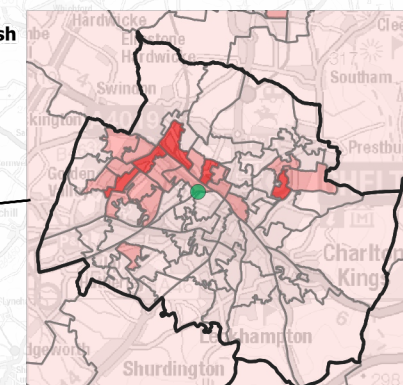
## Key

### Percentage

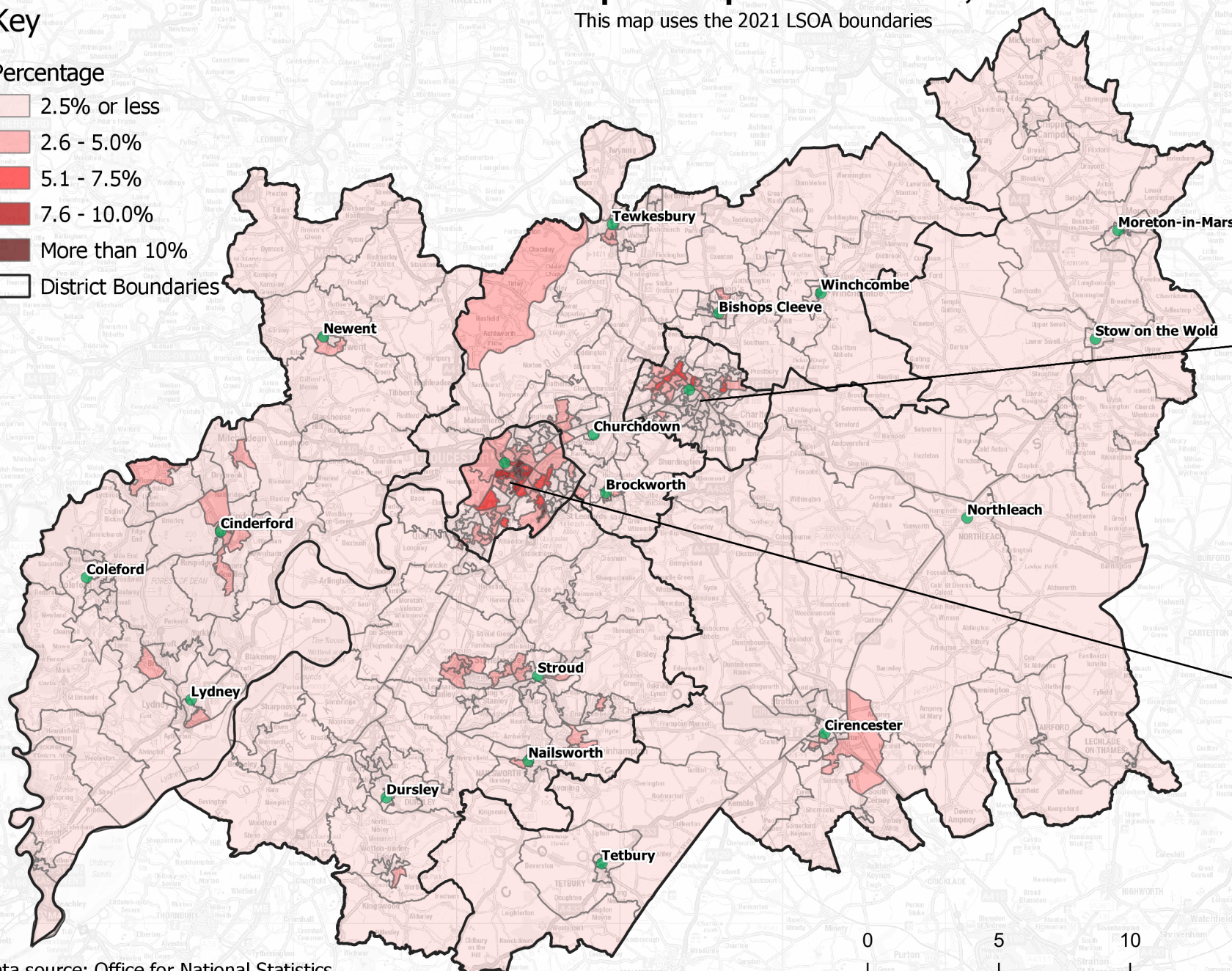
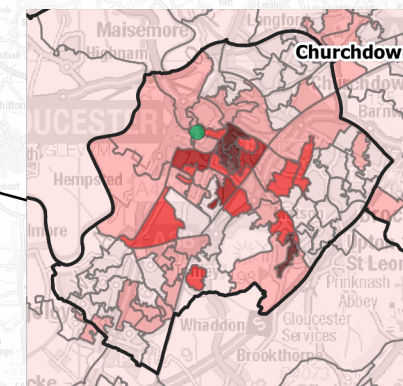
- 2.5% or less
- 2.6 - 5.0%
- 5.1 - 7.5%
- 7.6 - 10.0%
- More than 10%
- District Boundaries

A household is classed as overcrowded if it has fewer bedrooms than required based on the age, gender and relationships of residents

## Cheltenham



## Gloucester



Data source: Office for National Statistics

© Crown Copyright and database rights 2025, Ordnance Survey 100019134.

You are not permitted to copy, sub-license, distribute or sell any of this data to third parties in any form

G Browne - 03/04/2025