

# Unemployment Bulletin

Issue 33 April 2011

## Contents

### Part 1: Summary

A summary of unemployment data at district, County, regional and national level

1

### Part 2: County

Unemployment figures for the County compared to the South West and the rest of the UK

3

### Part 3: Districts

A comparative break down of unemployment figures by district

4

### Part 4: Wards

Further breakdown of unemployment figures by ward:

Cheltenham

6

Cotswolds

8

Forest of Dean

10

Gloucester

12

Stroud

14

Tewkesbury

16

### Part 5: Map

Distribution of claimant rate across Gloucestershire

18

### Part 6: Young People

Data about Young People Not in Education, Employment or Training (NEET)

20

Produced by:

**The Research Team (Economics)**  
Chief Executive Support Unit  
Gloucestershire County Council  
May 2011

\*The population figures used to calculate the claimant count rates have changed from working age (16-59f/64m) to aged 16-64 for both males and females. The last ten months rates have been adjusted to reflect this change

## INTRODUCTION

The Unemployment Bulletin provides a monthly update on unemployment data for Gloucestershire, the South West region and the United Kingdom. It is produced by the Economic section of the County Council Chief Executive's Support Unit Research Team. The data is sourced from the Office for National Statistics via Nomis ([www.nomis.co.uk](http://www.nomis.co.uk)).

The claimant count measures the number of people claiming unemployment-related benefit (currently Job Seeker's allowance). The claimant rate is the number of claimants as a proportion of the working age population.

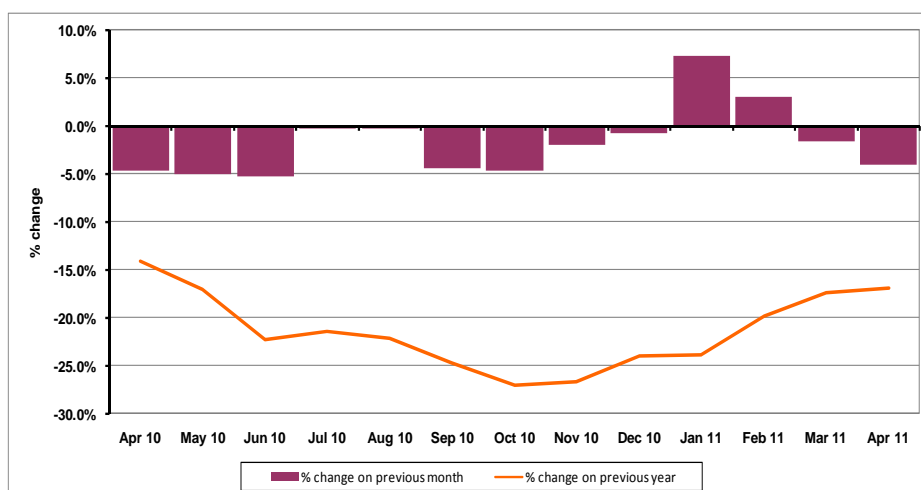
## PART 1: SUMMARY

**The claimant rate in Gloucestershire was 2.4 % in April 2011.** This was a decrease of 0.1% on the March 2011 figure. The UK rate remained the same at 3.8%, while the South West rate declined to 2.6%. Gloucestershire's rate was 0.2% lower than the South West average of 2.6%, and 1.4% lower than the UK average of 3.8%.

**The claimant count in Gloucestershire in April 2011 decreased by 379 people.** The amount of people claiming in April 2011 was 4.0% lower than the number in March 2011. This compares to a 3.8% decline in the South West and a 0.4% decrease for the UK.

**The year on year claimant count in Gloucestershire has decreased.** The count was 17.0% lower in April 2011 than at the same point in the previous year as shown in the graph below.

Gloucestershire claimants - Month on Month and Year on Year change: April 2010 to April 2011



Source: ONS Crown Copyright Reserved

## DISTRICTS AT A GLANCE

At a glance unemployment information grouped by district. Includes:

**Claim count:** Total number of people claiming Job Seekers Allowance in April 2011

**Compared to last month:** How much larger/smaller April's claim count is compared to March, expressed as a %

**Claimant rate:** The % of working population claiming Job Seekers Allowance in April 2011

**Highest claiming ward:** The ward with the highest claim count in that district and the rate

### CHELTEMHAM BOROUGH

Claim count:	1,965
Compared to last month:	-2.6%
Claimant rate:	2.7%
Highest claiming ward	Hesters Way (5.6%)

### GLOUCESTER CITY

Claim count:	2,745
Compared to last month:	-1.0%
Claimant rate:	3.6%
Highest claiming ward	Westgate (7.9%)

### COTSWOLD DISTRICT

Claim count:	665
Compared to last month:	-10.5%
Claimant rate:	1.3%
Highest claiming ward	Cirencester Watermoor (2.8%)

### STROUD DISTRICT

Claim count:	1,360
Compared to last month:	-4.7%
Claimant rate:	2.0%
Highest claiming ward	Central (5.4%)

### FOREST OF DEAN

Claim count:	1,277
Compared to last month:	-6.9%
Claimant rate:	2.5%
Highest claiming ward	Cinderford East (5.1%)

### TEWKESBURY BOROUGH

Claim count:	1,032
Compared to last month:	-5.3%
Claimant rate:	2.1%
Highest claiming ward	Tewkesbury Prior's Park (4.5%)

## YOUNG PEOPLE NOT IN EDUCATION, EMPLOYMENT OR TRAINING (NEET)

As at the end of April 2011 there were 589 young people aged 16-18 not in education, employment or training in Gloucestershire and this figure translates into an adjusted (\*) 16-18 NEET population of 4.1%.

## PART 2: UK, SW AND GLOUCESTERSHIRE INDICATORS

The unemployment situation in Gloucestershire compared to the South West and the UK.

### Claimant Rate

Figure 1: Claimant Rate for Gloucestershire, the South West and UK over the past year

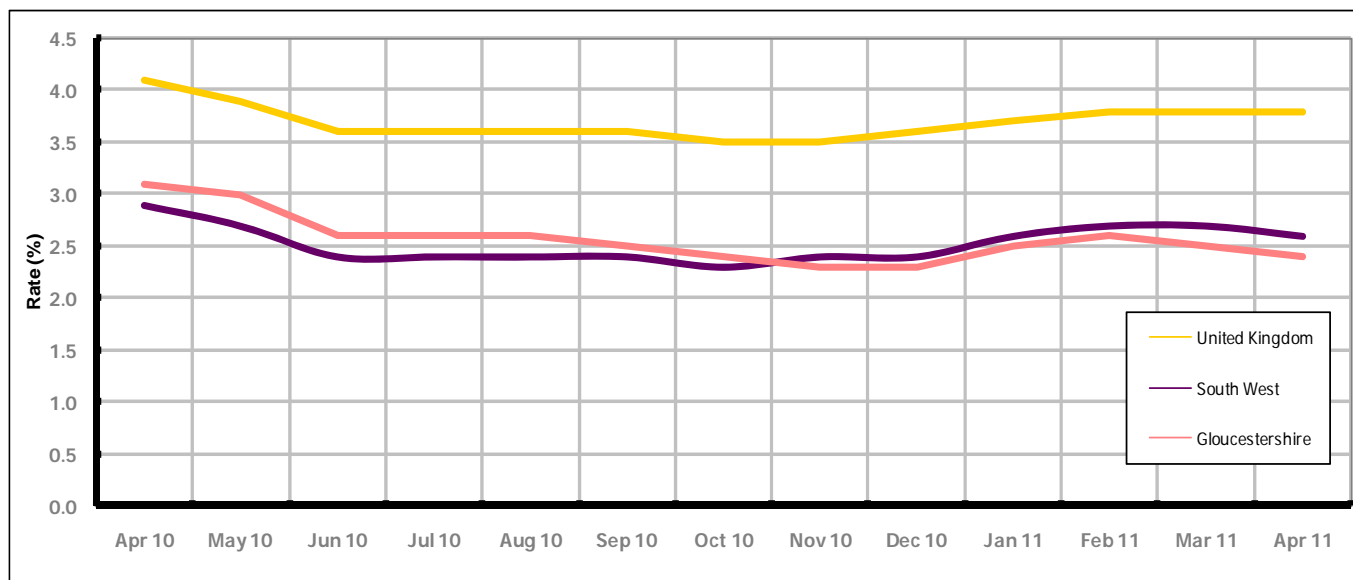


Figure 1 shows the claimant rate for Gloucestershire at 2.4% in April 2011. The rate remained higher than the South West average, until November 2010, when it fell below the South West rate, it has been persistently lower by approximately 1.4% against the UK average during the same period. The April 2011 rate represented a 0.1% decrease on March 2011.

### Claimant Count

Table 1: Analysis of UK, South West and Gloucestershire Claimant Counts

Area	Claimant Count in April 2011	% change on March 2011	Average % change over the last six months	Consecutive months decreasing
UK	1,520,806	-0.4%	+1.2%	1
South West	84,335	-3.8%	+1.2%	1
Gloucestershire	9,044	-4.0%	+0.6%	1

Table 1 shows that in April 2011, the number of claimants in Gloucestershire was 4.0% lower than the number in March 2011.

The average change in claimants in Gloucestershire for the six months to April 2011 was + 0.6%. This is 0.6% lower than the UK and the South West average.

## PART 3: LOCAL AUTHORITY DISTRICT ANALYSIS

### Claimant Rate and Claimant Count

Figure 2: Claimant Rate (%) across Gloucestershire - April 2011

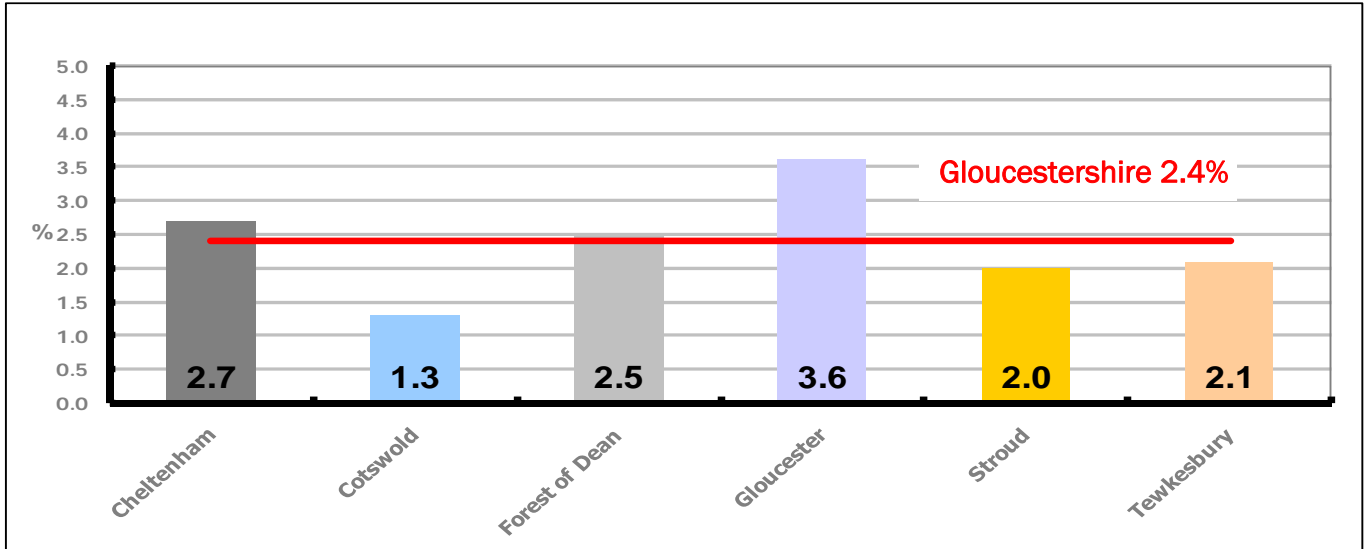


Figure 2 shows the claimant rate for April 2011 in Gloucestershire. Between March 2011 and April 2011 and Gloucester districts remained the same, while the remaining districts underwent a decline.

Figure 3: Total claimants over the past year across Gloucestershire Districts

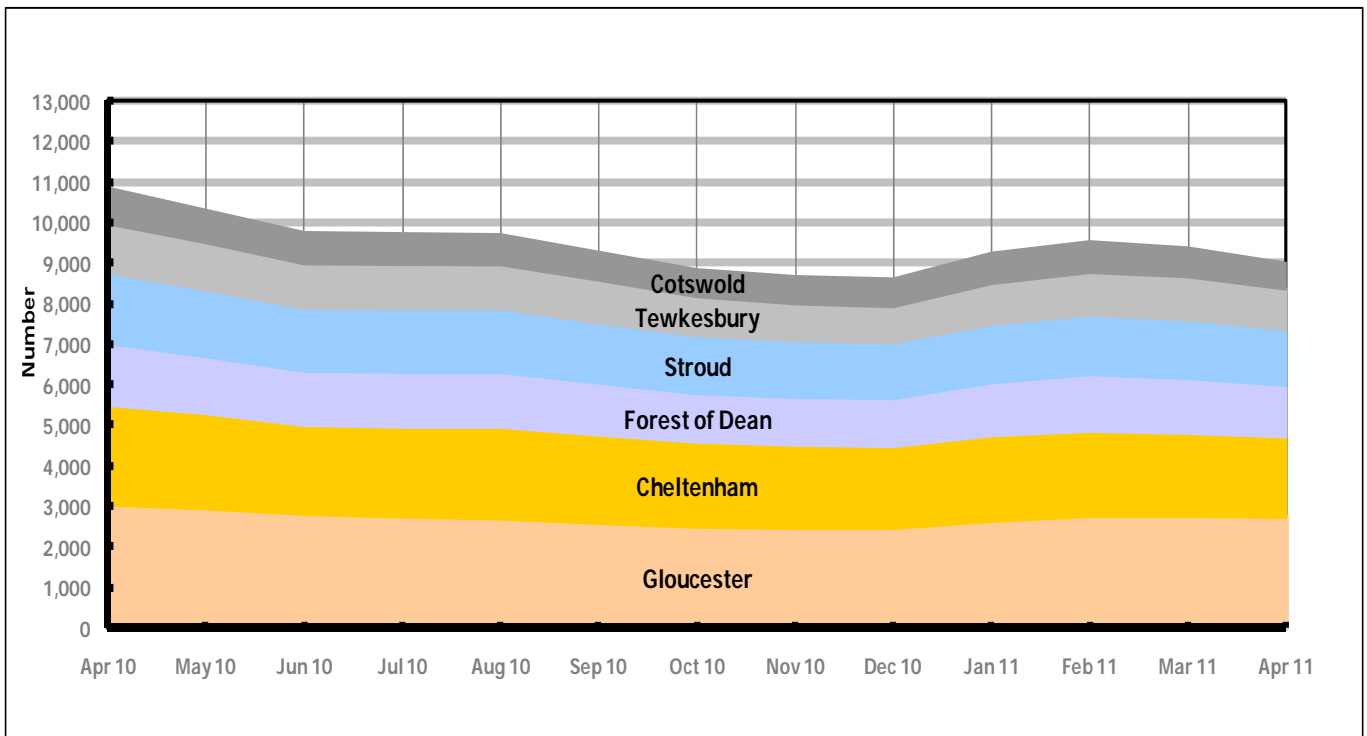


Figure 3 shows the overall claimant count by district for Gloucestershire over the past year. It shows the number of claimants have been declining since April 2010, with the exception of January and February 2011 when they increased.

Table 2: Analysis of Gloucestershire and District Claimant Counts

Total	Apr 11 Number	Apr 11 Rate	Mar 11 Number	Mar 11 Rate	Monthly change	% monthly change	Monthly change of rate
<b>Gloucestershire</b>	9,044	2.4	9,423	2.5	-379	-4.0%	-0.1
Cheltenham	1,965	2.7	2,018	2.7	-53	-2.6%	0.0
Cotswold	665	1.3	743	1.5	-78	-10.5%	-0.2
Forest of Dean	1,277	2.5	1,371	2.7	-94	-6.9%	-0.2
Gloucester	2,745	3.6	2,774	3.6	-29	-1.0%	0.0
Stroud	1,360	2.0	1,427	2.1	-67	-4.7%	-0.1
Tewkesbury	1,032	2.1	1,090	2.2	-58	-5.3%	-0.1

Table 2 shows the change in the claimant count in April 2011 compared to March 2011. All districts experienced a decrease in the number of claimants.

Table 3: Analysis of Male Gloucestershire and District Claimant Counts

Male	Apr 11 Number	Apr 11 Rate	Mar 11 Number	Mar 11 Rate	Monthly change	% monthly change	Monthly change of rate
<b>Gloucestershire</b>	6,092	3.3	6,439	3.5	-347	-5.4%	-0.2
Cheltenham	1,324	3.5	1,384	3.7	-60	-4.3%	-0.2
Cotswold	431	1.7	487	1.9	-56	-11.5%	-0.2
Forest of Dean	854	3.3	932	3.6	-78	-8.4%	-0.3
Gloucester	1,873	4.9	1,924	5.0	-51	-2.7%	-0.1
Stroud	913	2.7	980	2.9	-67	-6.8%	-0.2
Tewkesbury	697	2.8	732	3.0	-35	-4.8%	-0.2

Table 3 shows the change in the male claimant count in April 2011 compared to March 2011. All districts experienced a decrease in the number of male claimants.

Table 4: Analysis of Female Gloucestershire and District Claimant Counts

Female	Apr 11 Number	Apr 11 Rate	Mar 11 Number	Mar 11 Rate	Monthly change	% monthly change	Monthly change of rate
<b>Gloucestershire</b>	2,952	1.6	2,984	1.6	-32	-1.1%	0.0
Cheltenham	641	1.8	634	1.7	7	1.1%	0.1
Cotswold	234	0.9	256	1.0	-22	-8.6%	-0.1
Forest of Dean	423	1.6	439	1.7	-16	-3.6%	-0.1
Gloucester	872	2.3	850	2.2	22	2.6%	0.1
Stroud	447	1.3	447	1.3	0	0.0%	0.0
Tewkesbury	335	1.3	358	1.4	-23	-6.4%	-0.1

Table 4 shows the change in the female claimant count in April 2011 compared to March 2011. Cheltenham and Gloucester experienced a slight increase, the number of female claimants in Stroud remained the same, while Cotswold, Forest of Dean and Tewkesbury districts saw a decline.

## PART 4: LOCAL AUTHORITY DISTRICT AND WARD ANALYSIS

This section covers the six districts and a comparison of their constituent wards.

### 4.1 Cheltenham Borough

#### Claimant Rate and Claimant Count

Figure 4: Cheltenham Borough claimant rate over the last year

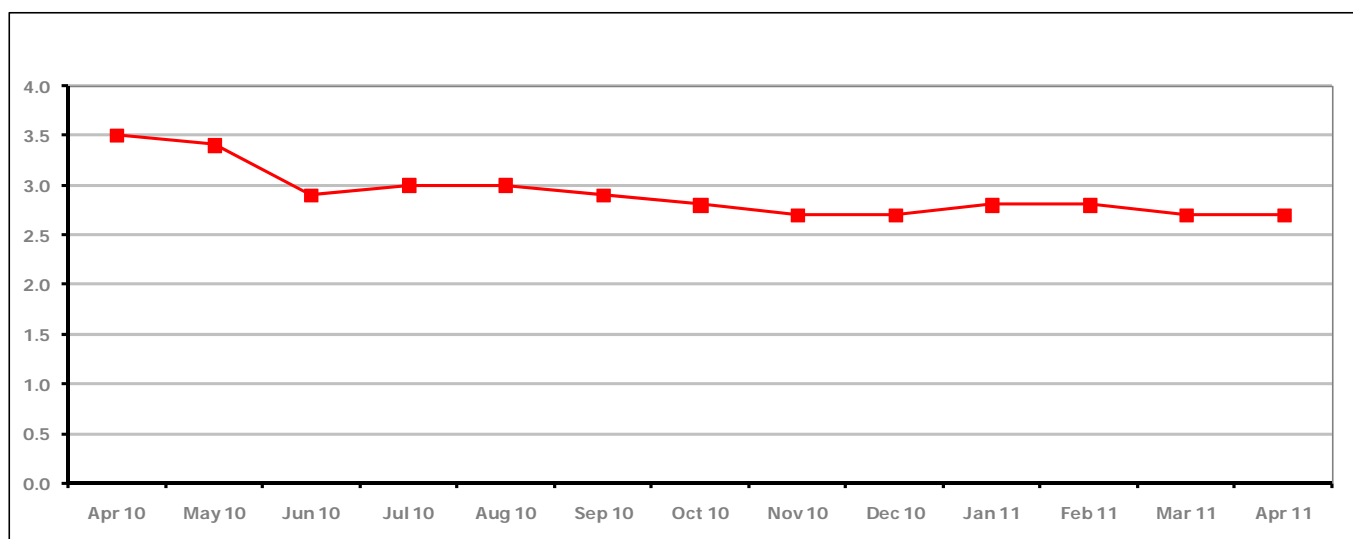


Figure 4 shows the claimant rate in Cheltenham remained the same as last month at 2.7%.

Figure 5: Cheltenham Borough claimants - Month on Month and Year on Year change

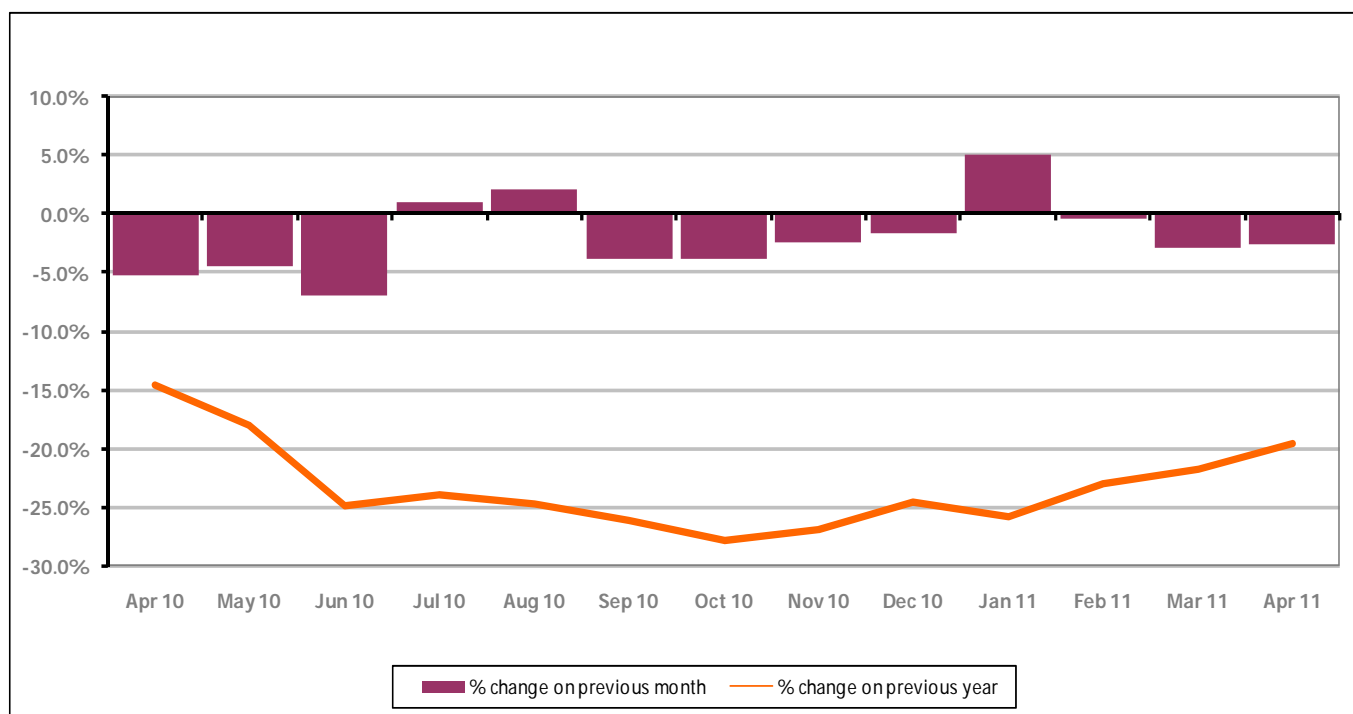


Figure 5 shows the claimant count decreased by -2.6% since last month. The change on the previous year has increased in April 2011 compared to March 2011 to -19.6%.

## PART 4: LOCAL AUTHORITY DISTRICT AND WARD ANALYSIS

## 4.1 Cheltenham Borough continued...

Figure 6: Claimant rates across Cheltenham Borough wards - April 2011

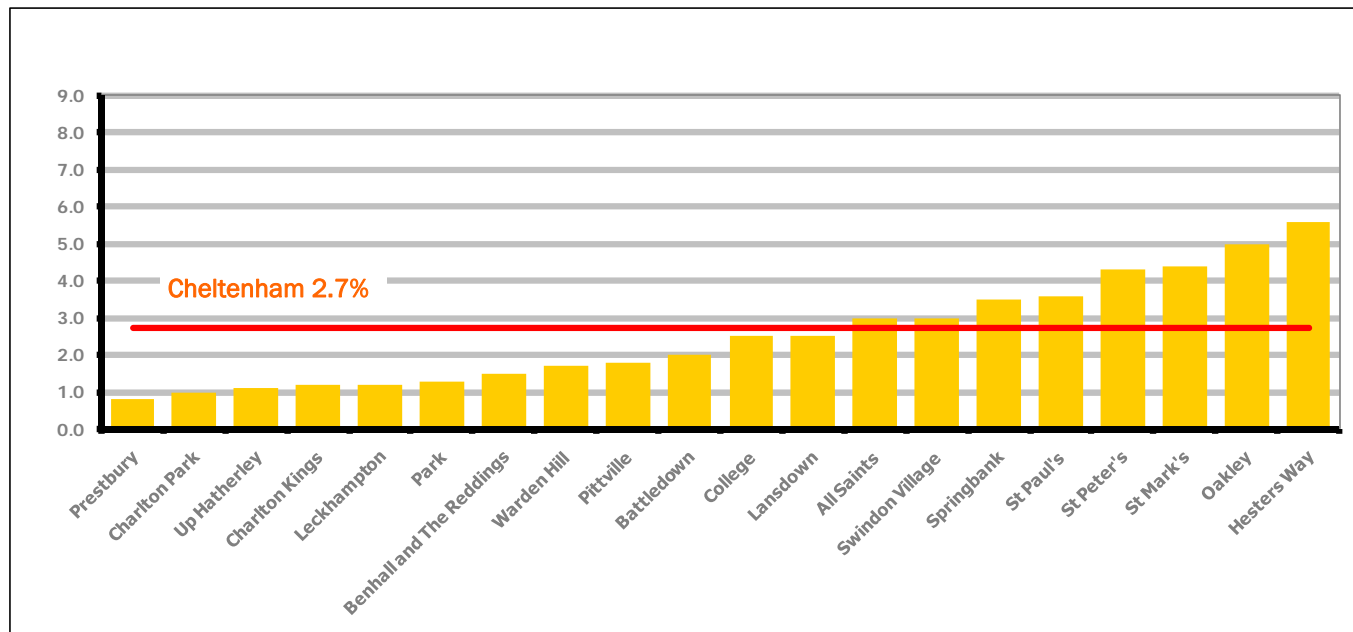


Figure 6 shows the claimant rates for Cheltenham Borough wards. The red line represents the average claimant rate across the Borough of 2.7%. Eight wards lie above the average.

Table 5: Analysis of Claimant Count at Cheltenham Borough ward level - April 2011

District	Ward	Rate	Rank*
Cheltenham	Prestbury	0.8	9
Cheltenham	Charlton Park	1.0	18
Cheltenham	Up Hatherley	1.1	28
Cheltenham	Charlton Kings	1.2	40
Cheltenham	Leckhampton	1.2	40
Cheltenham	Park	1.3	47
Cheltenham	Benhall and The Reddings	1.5	61
Cheltenham	Warden Hill	1.7	73
Cheltenham	Pittville	1.8	80
Cheltenham	Battledown	2.0	87
Cheltenham	College	2.5	98
Cheltenham	Lansdown	2.5	98
Cheltenham	All Saints	3.0	111
Cheltenham	Swindon Village	3.0	111
Cheltenham	Springbank	3.5	121
Cheltenham	St Paul's	3.6	122
Cheltenham	St Peter's	4.3	127
Cheltenham	St Mark's	4.4	128
Cheltenham	Oakley	5.0	134
Cheltenham	Hesters Way	5.6	139

bottom 10% of county  
 first quartile of county  
 second quartile of county  
 third quartile of county  
 fourth quartile of county  
 highest 10% of county

\* 1 = "best" and 142 = "worst"

Table 5 shows overall claimant rates for Cheltenham Borough wards and their position relative to all wards in Gloucestershire.

## PART 4: LOCAL AUTHORITY DISTRICT AND WARD ANALYSIS

## 4.2 Cotswold District

## Claimant Rate and Claimant Count

Figure 7: Cotswold District claimant rate over the last year

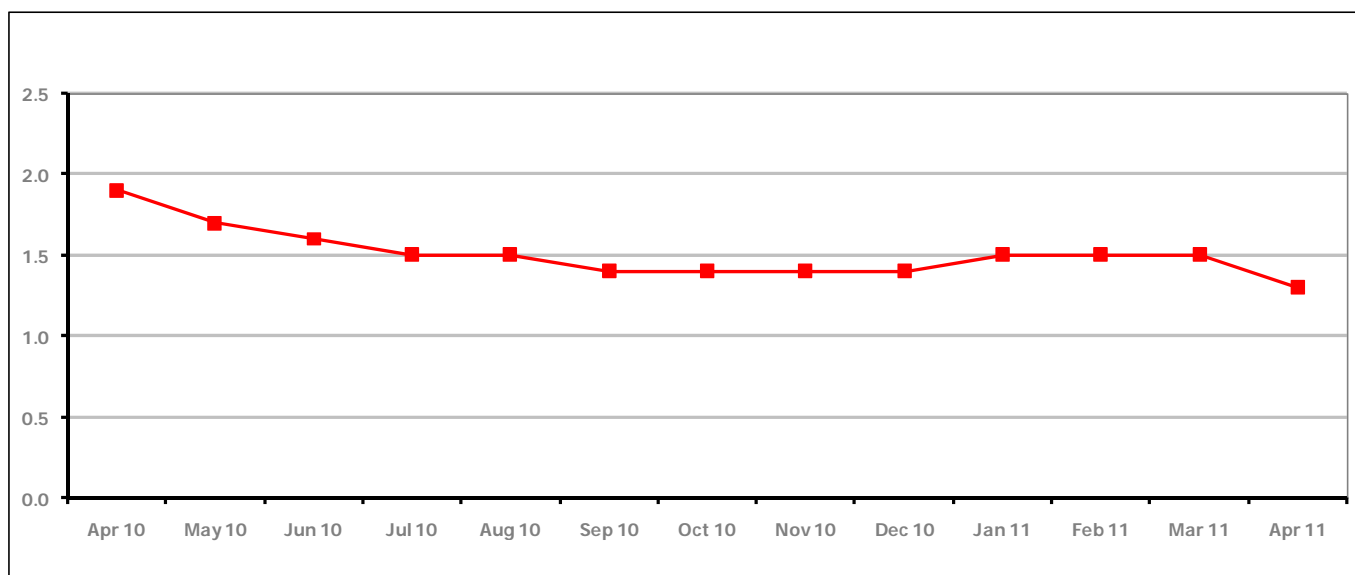


Figure 7 shows the claimant rate in Cotswold District decreased in April 2011 to 1.3%.

Figure 8: Cotswold District claimants - Month on Month and Year on Year change

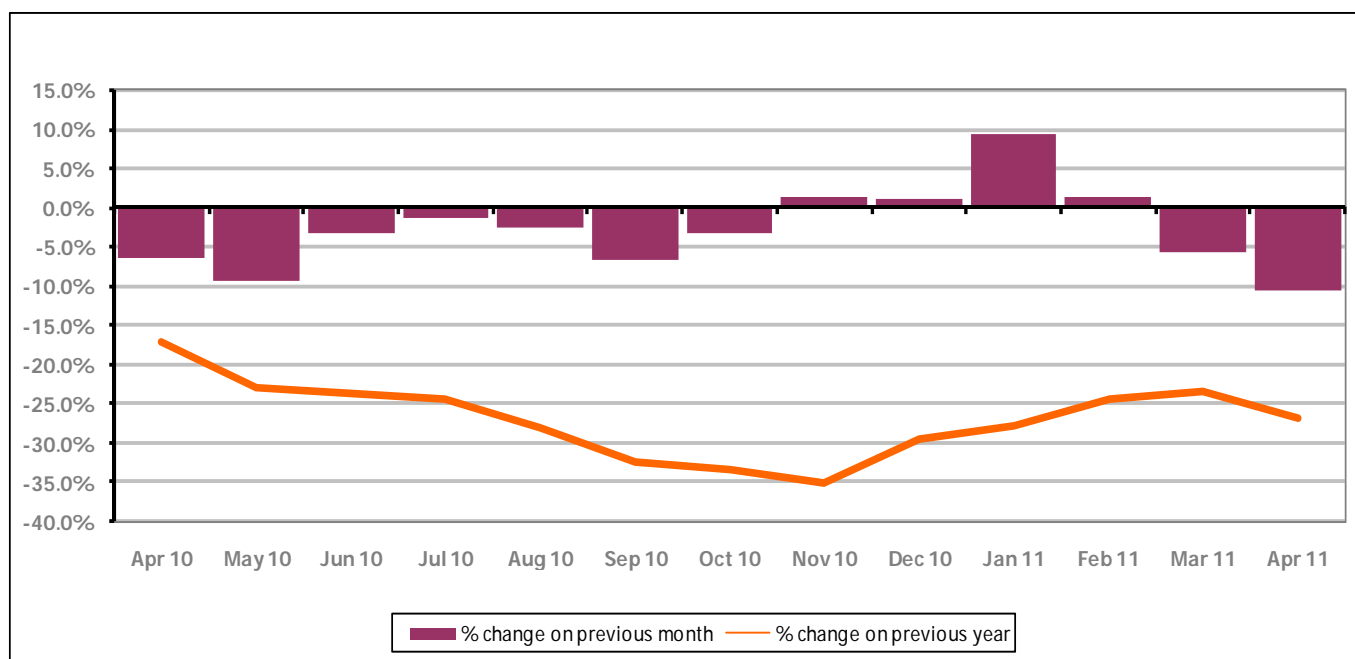


Figure 8 shows the claimant count decreased by -10.5% since March 2011. The change on the previous year has decreased from March 2011 to April 2011 to -26.8%.



## PART 4: LOCAL AUTHORITY DISTRICT AND WARD ANALYSIS

## 4.2 Cotswold District continued...

Figure 9: Claimant rates across Cotswold District wards - April 2011

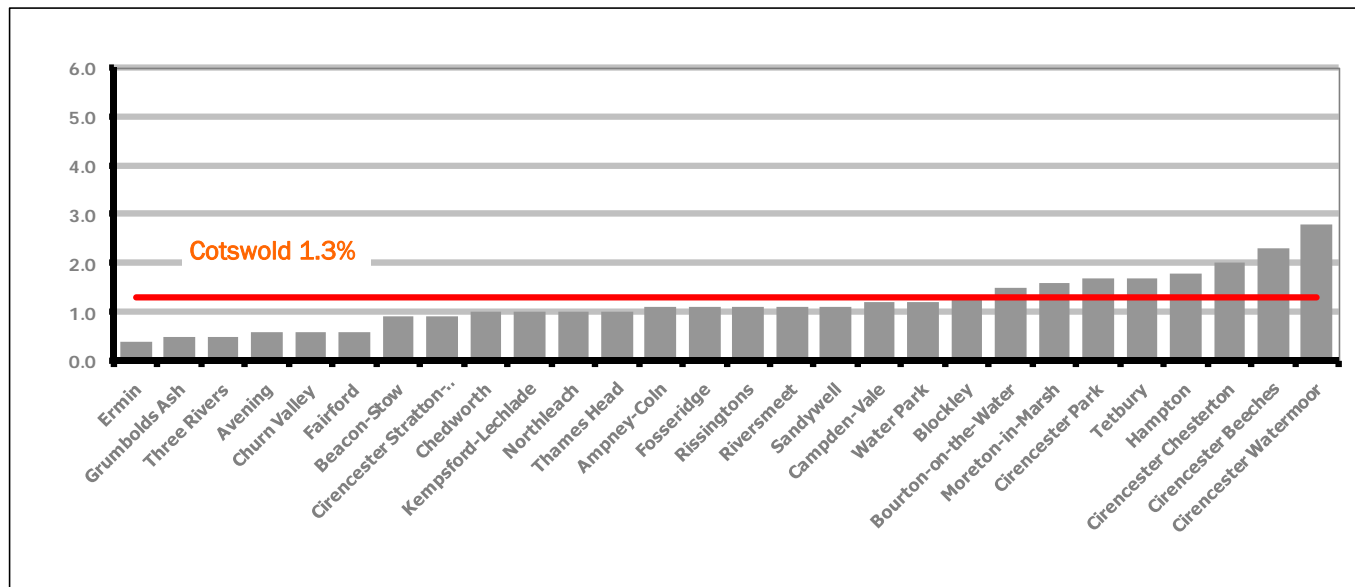
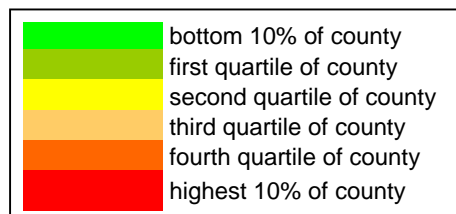


Figure 9 shows the claimant rates for Cotswold District wards. The red line represents the average claimant rate across the District of 1.3%. Eight wards lie above the average.

Table 6: Analysis of Claimant Count at Cotswold District ward level - April 2011

District	Ward	Rate	Rank*
Cotswolds	Ermin	0.4	2
Cotswolds	Grumbolds Ash	0.5	3
Cotswolds	Three Rivers	0.5	3
Cotswolds	Avening	0.6	5
Cotswolds	Churn Valley	0.6	5
Cotswolds	Fairford	0.6	5
Cotswolds	Beacon-Stow	0.9	11
Cotswolds	Cirencester Stratton-Whiteway	0.9	11
Cotswolds	Chedworth	1.0	18
Cotswolds	Kempford-Lechlade	1.0	18
Cotswolds	Northleach	1.0	18
Cotswolds	Thames Head	1.0	18
Cotswolds	Ampney-Coln	1.1	28
Cotswolds	Fossebridge	1.1	28
Cotswolds	Rissingtons	1.1	28
Cotswolds	Riversmeet	1.1	28
Cotswolds	Sandywell	1.1	28
Cotswolds	Campden-Vale	1.2	40
Cotswolds	Water Park	1.2	40
Cotswolds	Blockley	1.3	47
Cotswolds	Bourton-on-the-Water	1.5	61
Cotswolds	Moreton-in-Marsh	1.6	68
Cotswolds	Cirencester Park	1.7	73
Cotswolds	Tetbury	1.7	73
Cotswolds	Hampton	1.8	80
Cotswolds	Cirencester Chesterton	2.0	87
Cotswolds	Cirencester Beeches	2.3	95
Cotswolds	Cirencester Watermoor	2.8	107



\* 1 = "best" and 142 = "worst"

Table 6 shows overall claimant rates for Cotswold District wards and their position relative to all wards in Gloucestershire.

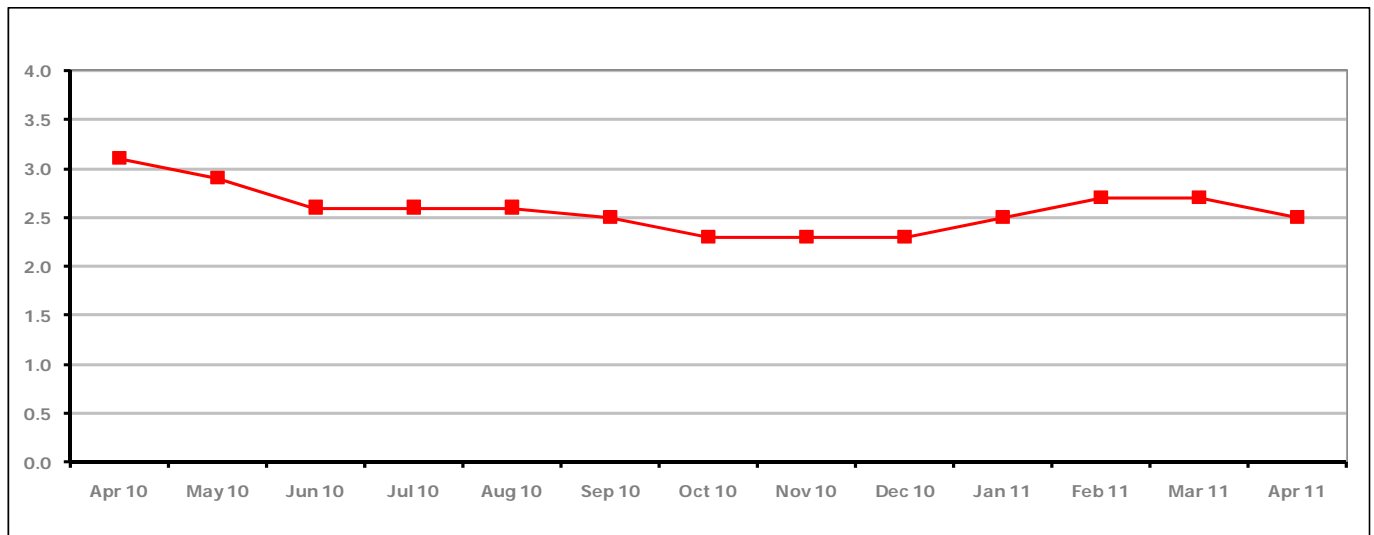
**PART 4: LOCAL AUTHORITY DISTRICT AND WARD ANALYSIS****4.3 Forest of Dean District****Claimant Rate and Claimant Count***Figure 10: Forest of Dean District claimant rate over the last year*

Figure 10 shows the claimant rate in the Forest of Dean decreased in April 2011 to 2.5%.

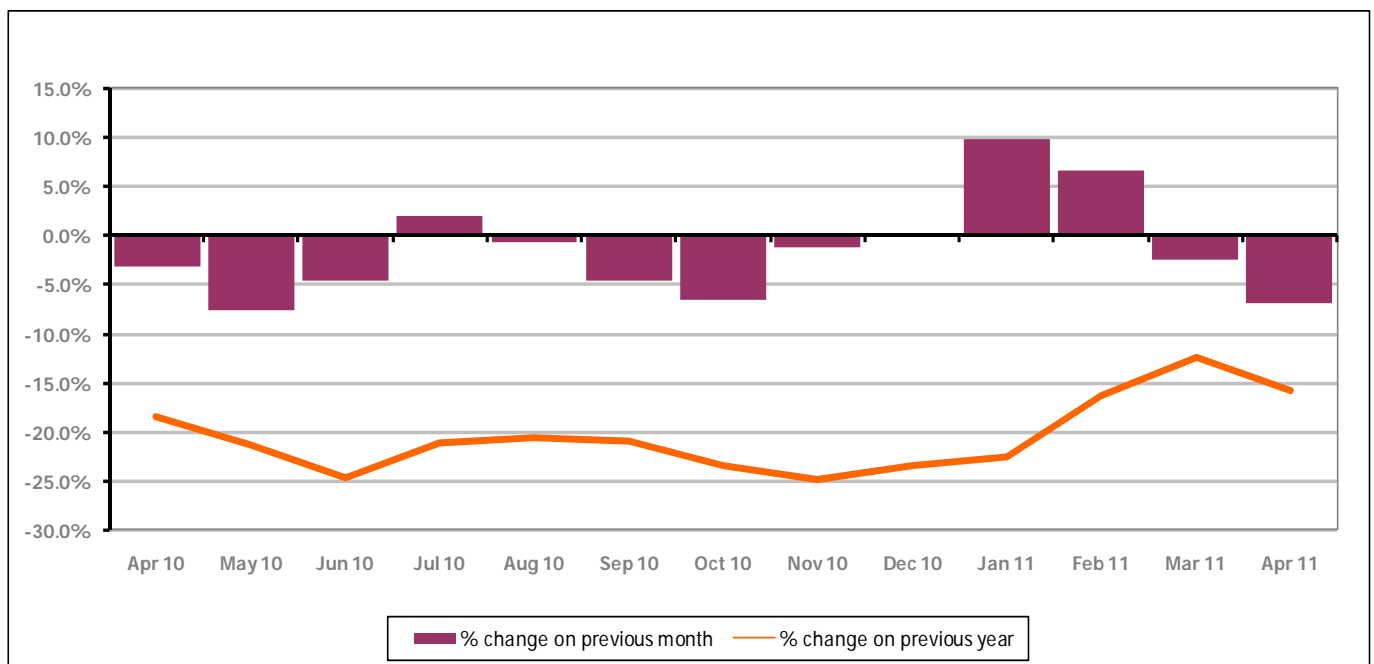
*Figure 11: Forest of Dean District claimants - Month on Month and Year on Year change*

Figure 11 shows the claimant count decreased by -6.9% since March 2011. The change on the previous year decreased between March and April 2011 to -15.9%.

## PART 4: LOCAL AUTHORITY DISTRICT AND WARD ANALYSIS

## 4.3 Forest of Dean District continued...

Figure 12: Claimant rates across Forest of Dean District wards - April 2011

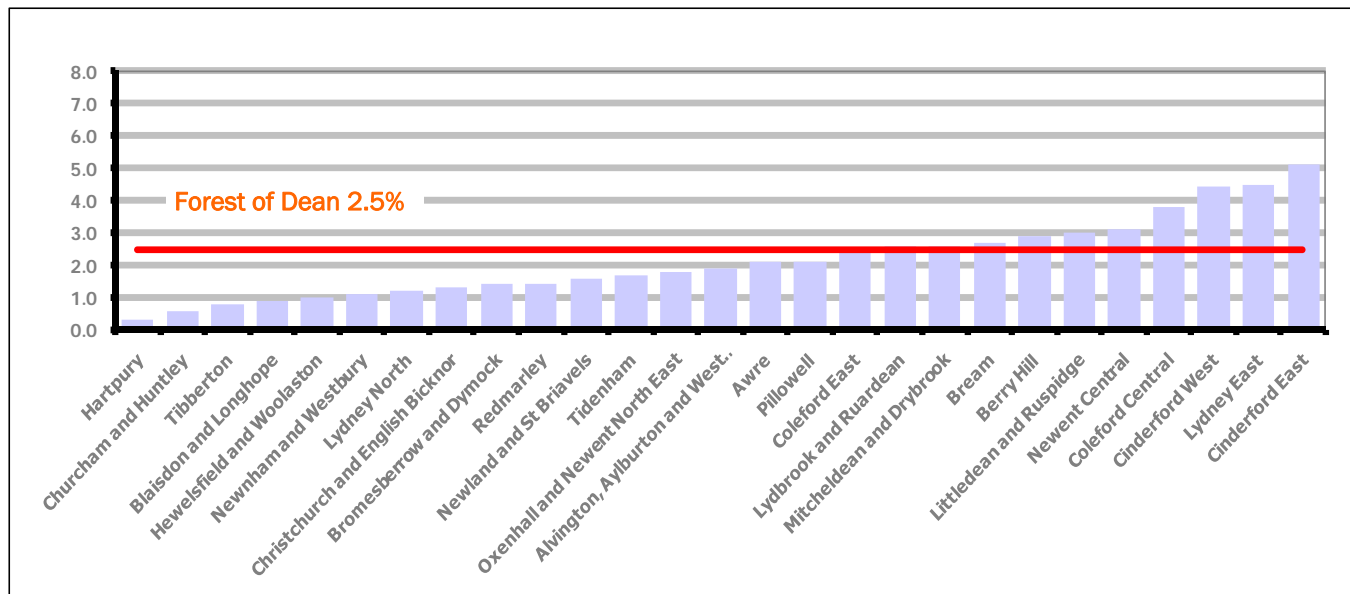


Figure 12 shows the claimant rates for Forest of Dean District wards. The red line represents the average claimant rate across the District of 2.5 %. Ten wards lie above the average.

Table 7: Analysis of Claimant Count at Forest of Dean District ward level - April 2011

District	Ward	Rate	Rank*
Forest	Hartpury	0.3	1
Forest	Churcham and Huntley	0.6	5
Forest	Tibberton	0.8	9
Forest	Blaisdon and Longhope	0.9	11
Forest	Hewelsfield and Woolaston	1.0	18
Forest	Newnham and Westbury	1.1	28
Forest	Lydney North	1.2	40
Forest	Christchurch and English Bicknor	1.3	47
Forest	Bromesberrow and Dymock	1.4	55
Forest	Redmarley	1.4	55
Forest	Newland and St Briavels	1.6	68
Forest	Tidenham	1.7	73
Forest	Oxenhall and Newent North East	1.8	80
Forest	Alvington, Aylburton and West Lydney	1.9	85
Forest	Awre	2.1	92
Forest	Pillowell	2.1	92
Forest	Coleford East	2.5	98
Forest	Lydbrook and Ruardean	2.6	102
Forest	Mitcheldean and Drybrook	2.6	102
Forest	Bream	2.7	106
Forest	Berry Hill	2.9	109
Forest	Littledean and Ruspidge	3.0	111
Forest	Newent Central	3.1	116
Forest	Coleford Central	3.8	125
Forest	Cinderford West	4.4	128
Forest	Lydney East	4.5	131
Forest	Cinderford East	5.1	136

bottom 10% of county
first quartile of county
second quartile of county
third quartile of county
fourth quartile of county
highest 10% of county

\* 1 = "best" and 142 = "worst"

Table 7 shows overall claimant rates for the Forest of Dean District wards and their position relative to all wards in Gloucestershire.

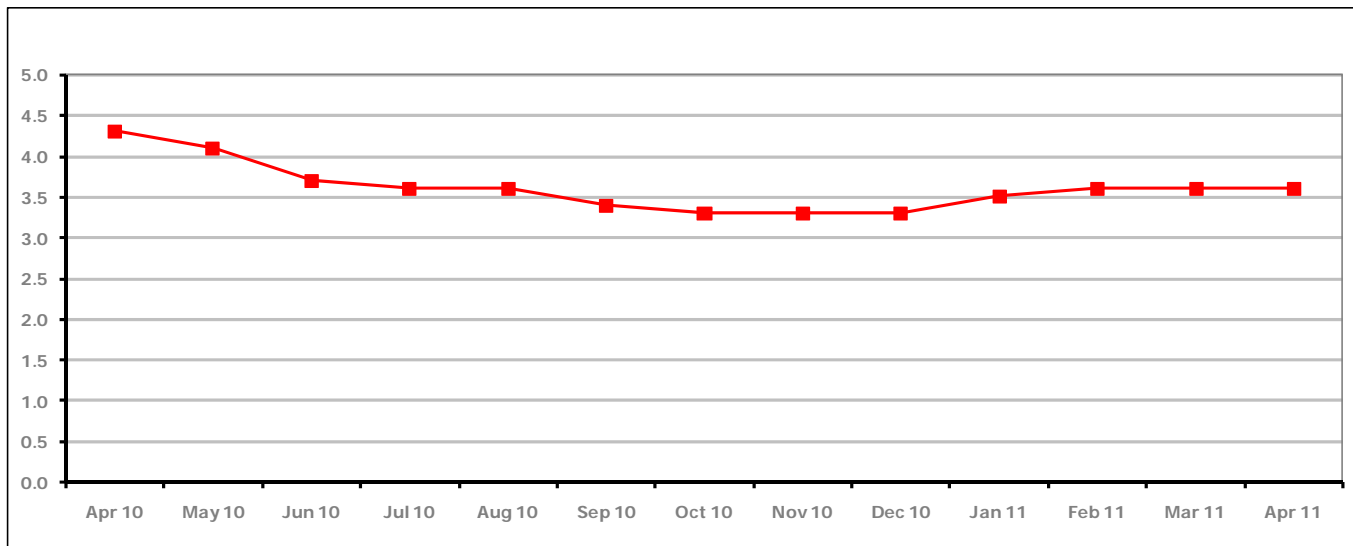
**PART 4: LOCAL AUTHORITY DISTRICT AND WARD ANALYSIS****4.4 Gloucester City****Claimant Rate and Claimant Count***Figure 13: Gloucester City claimant rate over the last year*

Figure 13 shows the claimant rate for Gloucester City remained the same as the last two months at 3.6%.

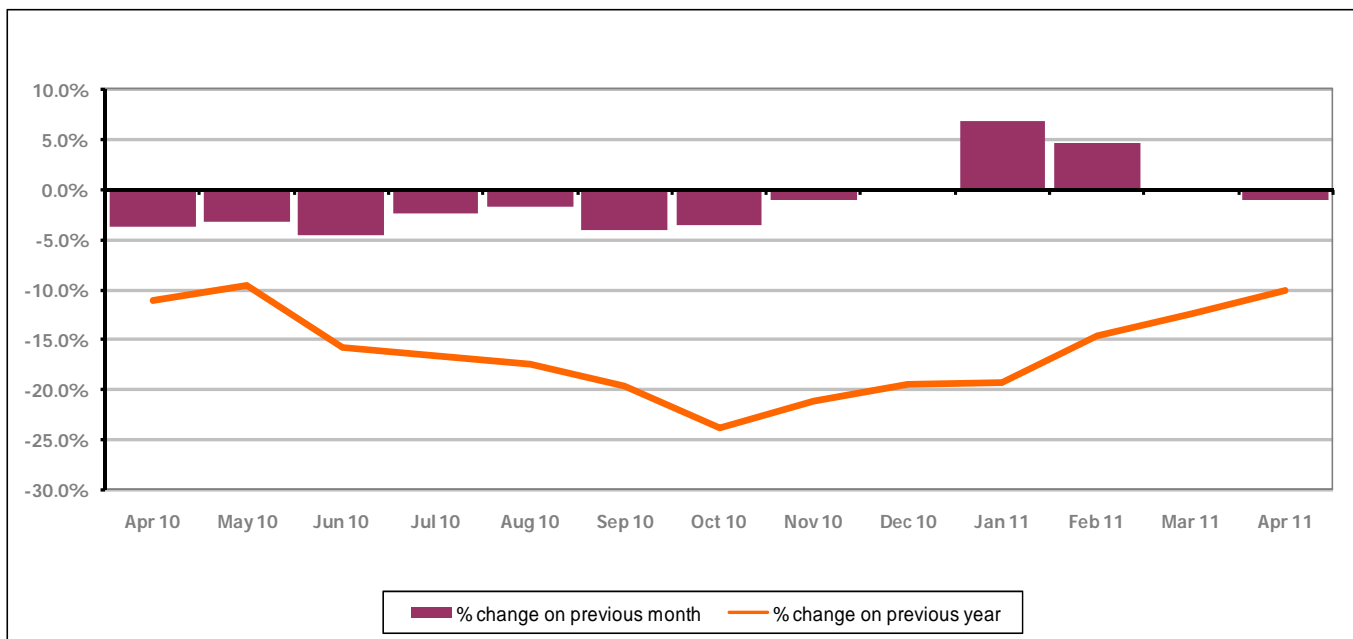
*Figure 14: Gloucester City claimants - Month on Month and Year on Year change*

Figure 14 shows the monthly claimant count decreased by -1.0% since March 2011. The change on the previous year has increased between March 2011 and April 2011 to -10.1%.

## PART 4: LOCAL AUTHORITY DISTRICT AND WARD ANALYSIS

## 4.4 Gloucester City continued...

Figure 15: Claimant rates across Gloucester City wards - April 2011

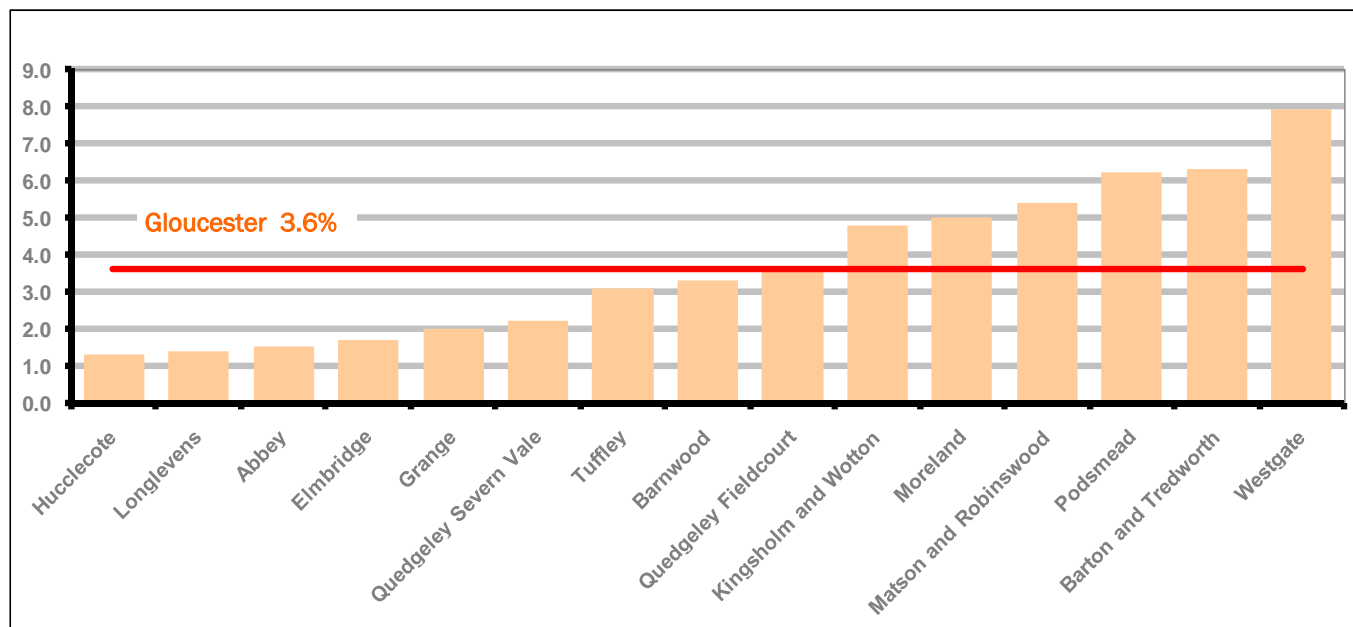
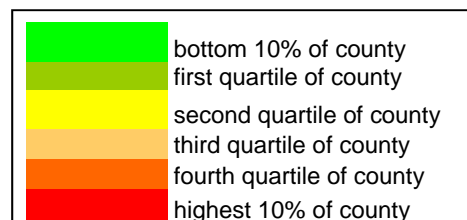


Figure 15 shows the claimant rates for Gloucester City district wards. The red line represents the average claimant rate across the City of 3.6%. Six wards lie above the average.

Table 8: Analysis of Claimant Count at Gloucester City ward level - April 2011

District	Ward	Rate	Rank*
Gloucester	Hucclecote	1.3	47
Gloucester	Longlevens	1.4	55
Gloucester	Abbey	1.5	61
Gloucester	Elmbridge	1.7	73
Gloucester	Grange	2.0	87
Gloucester	Quedgeley Severn Vale	2.2	94
Gloucester	Tuffley	3.1	116
Gloucester	Barnwood	3.3	119
Gloucester	Quedgeley Fieldcourt	3.6	122
Gloucester	Kingsholm and Wotton	4.8	133
Gloucester	Moreland	5.0	134
Gloucester	Matson and Robinswood	5.4	137
Gloucester	Podsmead	6.2	140
Gloucester	Barton and Tredworth	6.3	141
Gloucester	Westgate	7.9	142



\* 1 = "best" and 142 = "worst"

Table 8 shows overall claimant rates for Gloucester City wards and their position relative to all wards in Gloucestershire.

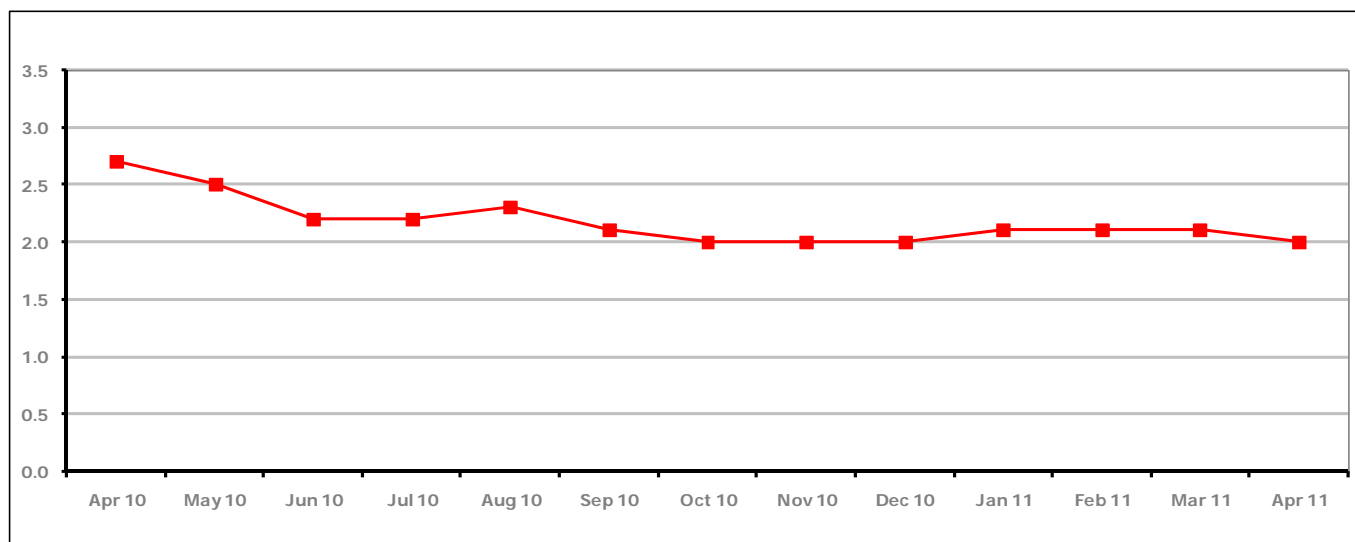
**PART 4: LOCAL AUTHORITY DISTRICT AND WARD ANALYSIS****4.5 Stroud District****Claimant Rate and Claimant Count***Figure 16: Stroud District claimant rate over the last year*

Figure 16 shows the claimant rate for Stroud District declined in April 2011 to 2.0%.

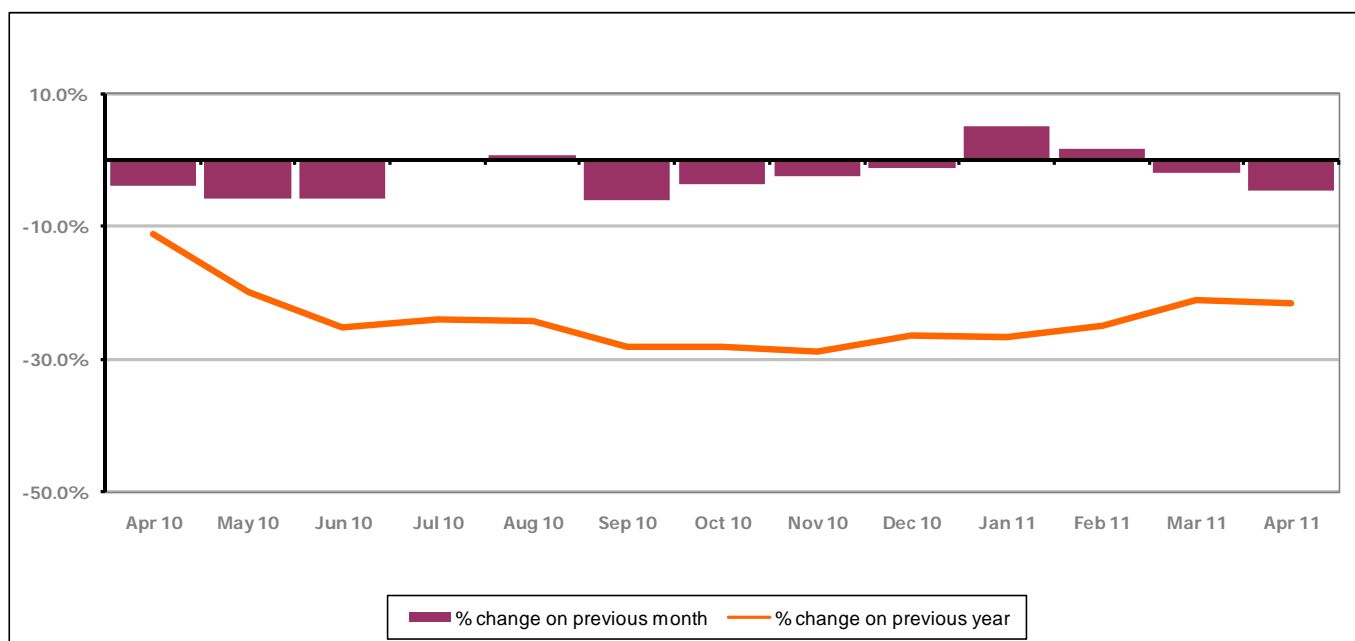
*Figure 17: Stroud District claimants - Month on Month and Year on Year change*

Figure 17 shows the monthly claimant count decreased by -4.7% since March 2011. The change on the previous year has decreased between March 2011 and April 2011 to -21.7%.

## PART 4: LOCAL AUTHORITY AND DISTRICT ANALYSIS

## 4.5 Stroud District continued...

Figure 18: Claimant rates across Stroud District wards - April 2011

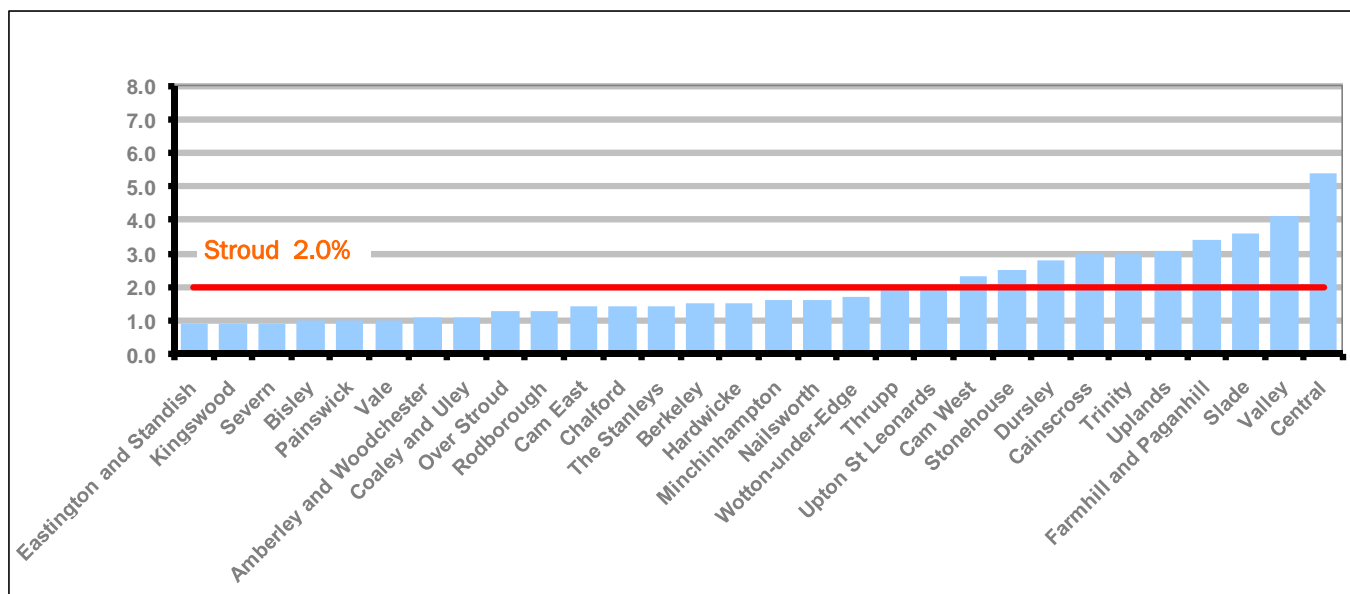
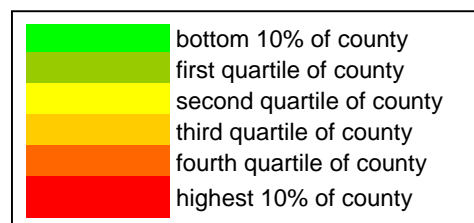


Figure 18 shows the claimant rates in Stroud District wards. The red line represents the average claimant rate across the District of 2.0%. Ten wards are above the average.

Table 9: Analysis of Claimant Count at Stroud District ward level - April 2011

District	Ward	Rate	Rank*
Stroud	Eastington and Standish	0.9	11
Stroud	Kingswood	0.9	11
Stroud	Severn	0.9	11
Stroud	Bisley	1.0	18
Stroud	Painswick	1.0	18
Stroud	Vale	1.0	18
Stroud	Amberley and Woodchester	1.1	28
Stroud	Coaley and Uley	1.1	28
Stroud	Over Stroud	1.3	47
Stroud	Rodborough	1.3	47
Stroud	Cam East	1.4	55
Stroud	Chalford	1.4	55
Stroud	The Stanleys	1.4	55
Stroud	Berkeley	1.5	61
Stroud	Hardwicke	1.5	61
Stroud	Minchinhampton	1.6	68
Stroud	Nailsworth	1.6	68
Stroud	Wotton-under-Edge	1.7	73
Stroud	Thrupp	2.0	87
Stroud	Upton St Leonards	2.0	87
Stroud	Cam West	2.3	95
Stroud	Stonehouse	2.5	98
Stroud	Dursley	2.8	107
Stroud	Cainscross	3.0	111
Stroud	Trinity	3.0	111
Stroud	Uplands	3.1	116
Stroud	Farmhill and Paganhill	3.4	120
Stroud	Slade	3.6	122
Stroud	Valley	4.1	126
Stroud	Central	5.4	137



\* 1 = "best" and 142 = "worst"

Table 9 shows overall claimant rates for Stroud District wards and their position relative to all wards in Gloucestershire.

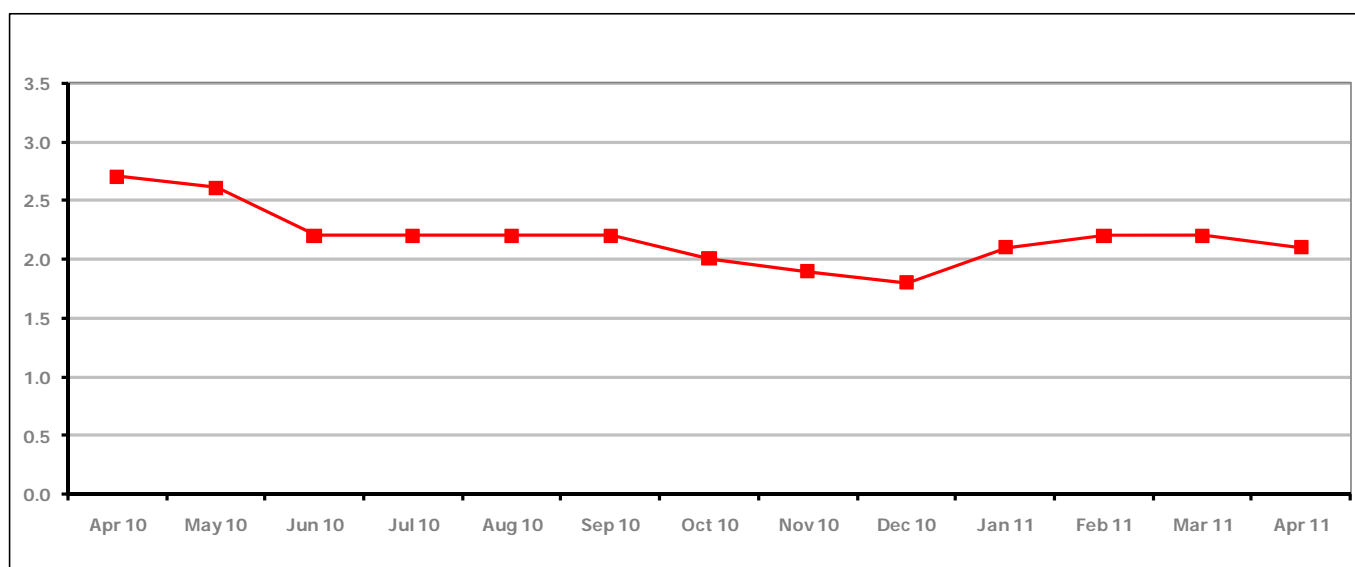
**PART 4: LOCAL AUTHORITY DISTRICT AND WARD ANALYSIS****4.6 Tewkesbury District****Claimant Rate and Claimant Count***Figure 19: Tewkesbury District claimant rate over the last year*

Figure 19 shows the claimant rate for Tewkesbury District declined in April 2011 to 2.1%.

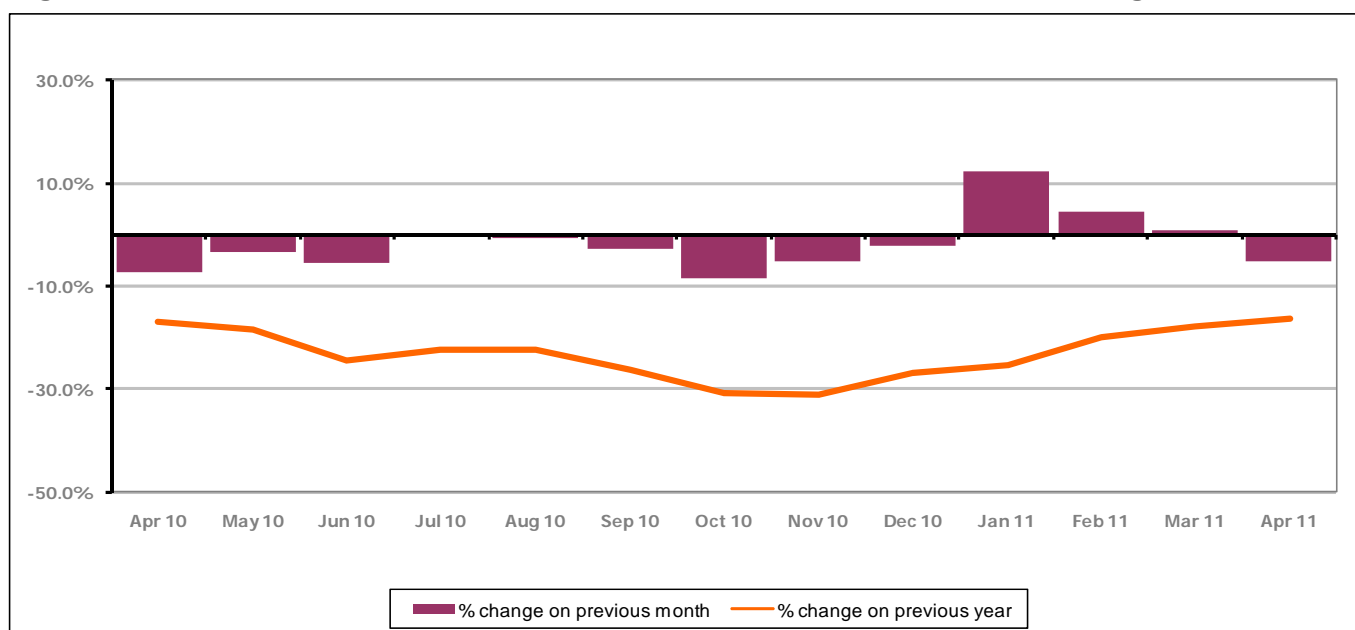
*Figure 20: Tewkesbury District claimants - Month on Month and Year on Year change*

Figure 20 shows that the monthly claimant count increased in April 2011 by -5.3%. The change on the previous year increased between April 2011 and March 2011 to -16.4%.



## PART 4: LOCAL AUTHORITY AND DISTRICT ANALYSIS

## 4.6 Tewkesbury District continued...

Figure 21: Claimant rates across Tewkesbury District wards - April 2011

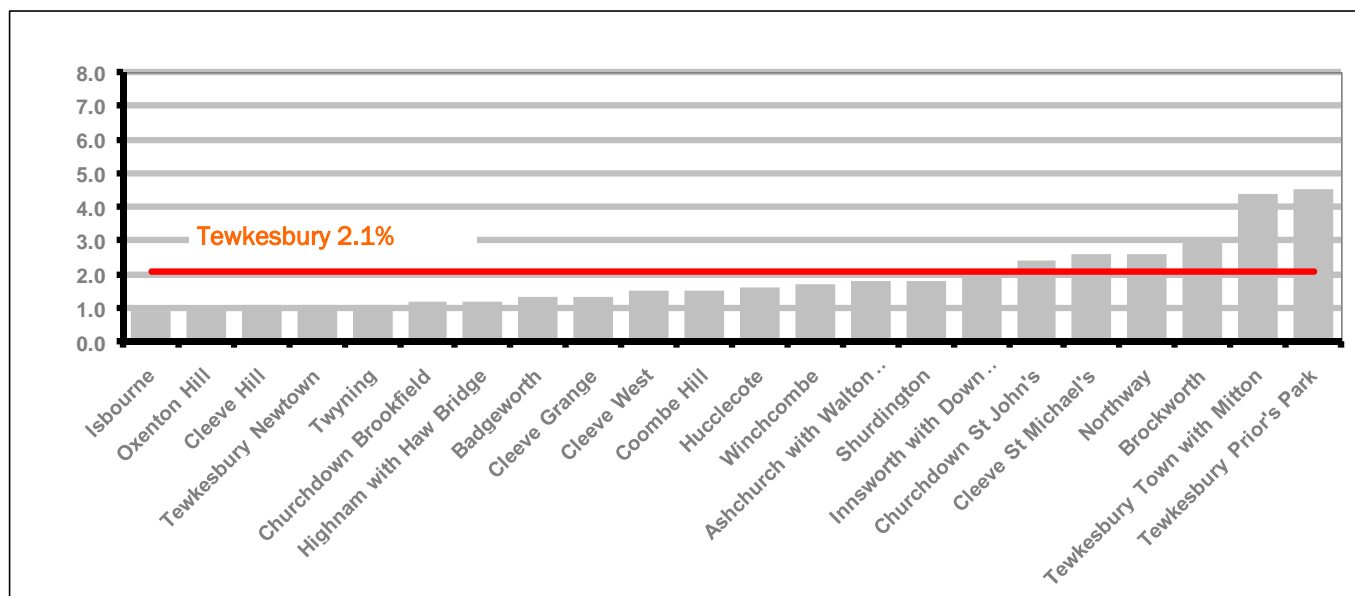
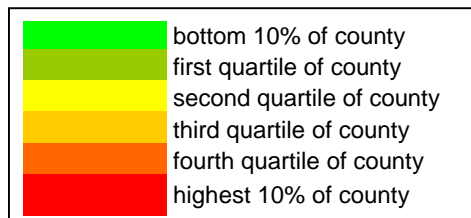


Figure 21 shows the claimant rates in Tewkesbury District wards. The red line represents the average claimant rate across the District of 2.1% and six wards are above the average.

Table 10: Analysis of Claimant Count at Tewkesbury District level - April 2011

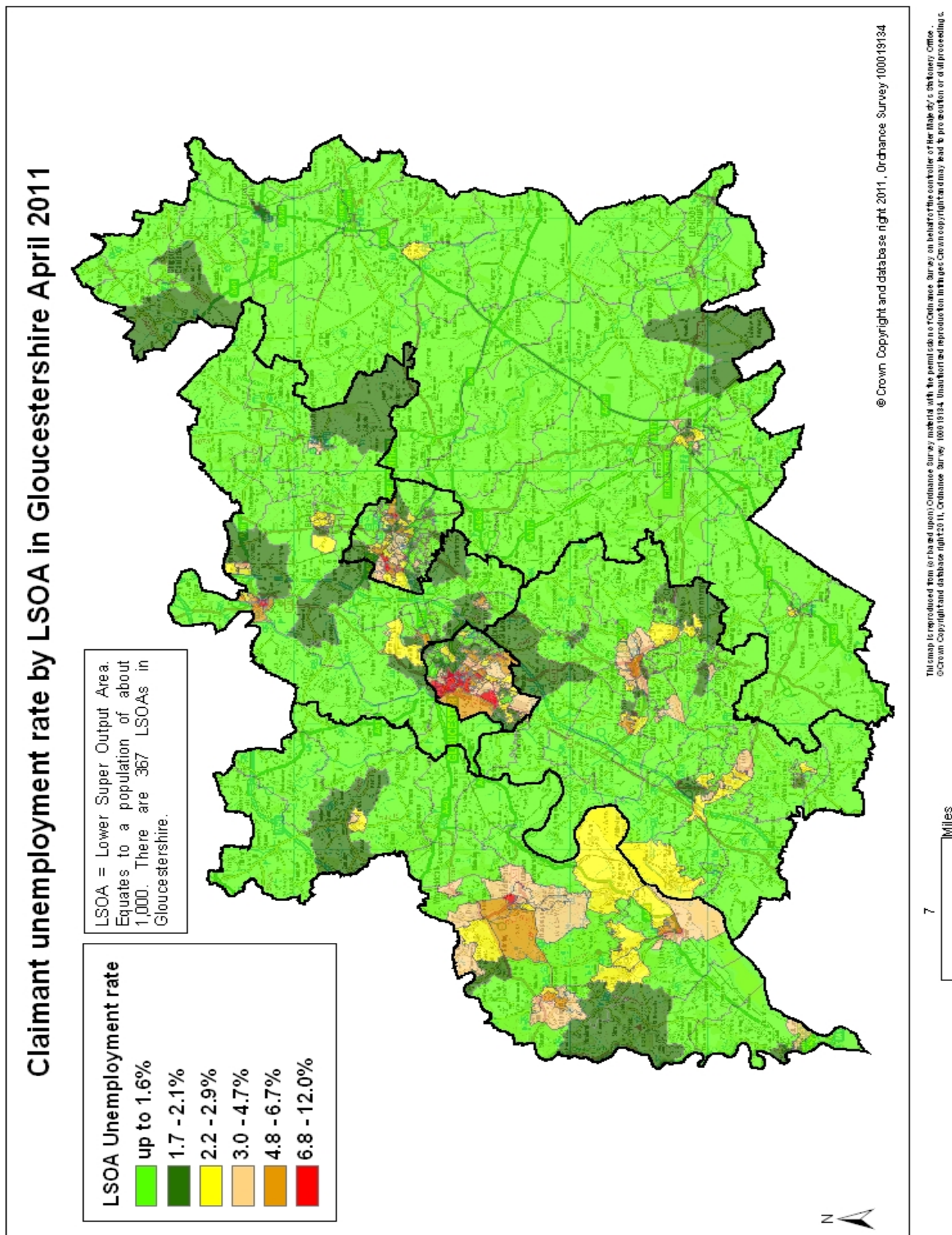
District	Ward	Rate	Rank*
Tewkesbury	Isbourne	0.9	11
Tewkesbury	Oxenton Hill	1.0	18
Tewkesbury	Cleeve Hill	1.1	28
Tewkesbury	Tewkesbury Newtown	1.1	28
Tewkesbury	Twynning	1.1	28
Tewkesbury	Churchdown Brookfield	1.2	40
Tewkesbury	Highnam with Haw Bridge	1.2	40
Tewkesbury	Badgeworth	1.3	47
Tewkesbury	Cleeve Grange	1.3	47
Tewkesbury	Cleeve West	1.5	61
Tewkesbury	Coombe Hill	1.5	61
Tewkesbury	Hucclecote	1.6	68
Tewkesbury	Winchcombe	1.7	73
Tewkesbury	Ashchurch with Walton Cardiff	1.8	80
Tewkesbury	Shurdington	1.8	80
Tewkesbury	Innsworth with Down Hatherley	1.9	85
Tewkesbury	Churchdown St John's	2.4	97
Tewkesbury	Cleeve St Michael's	2.6	102
Tewkesbury	Northway	2.6	102
Tewkesbury	Brockworth	2.9	109
Tewkesbury	Tewkesbury Town with Mitton	4.4	128
Tewkesbury	Tewkesbury Prior's Park	4.5	131



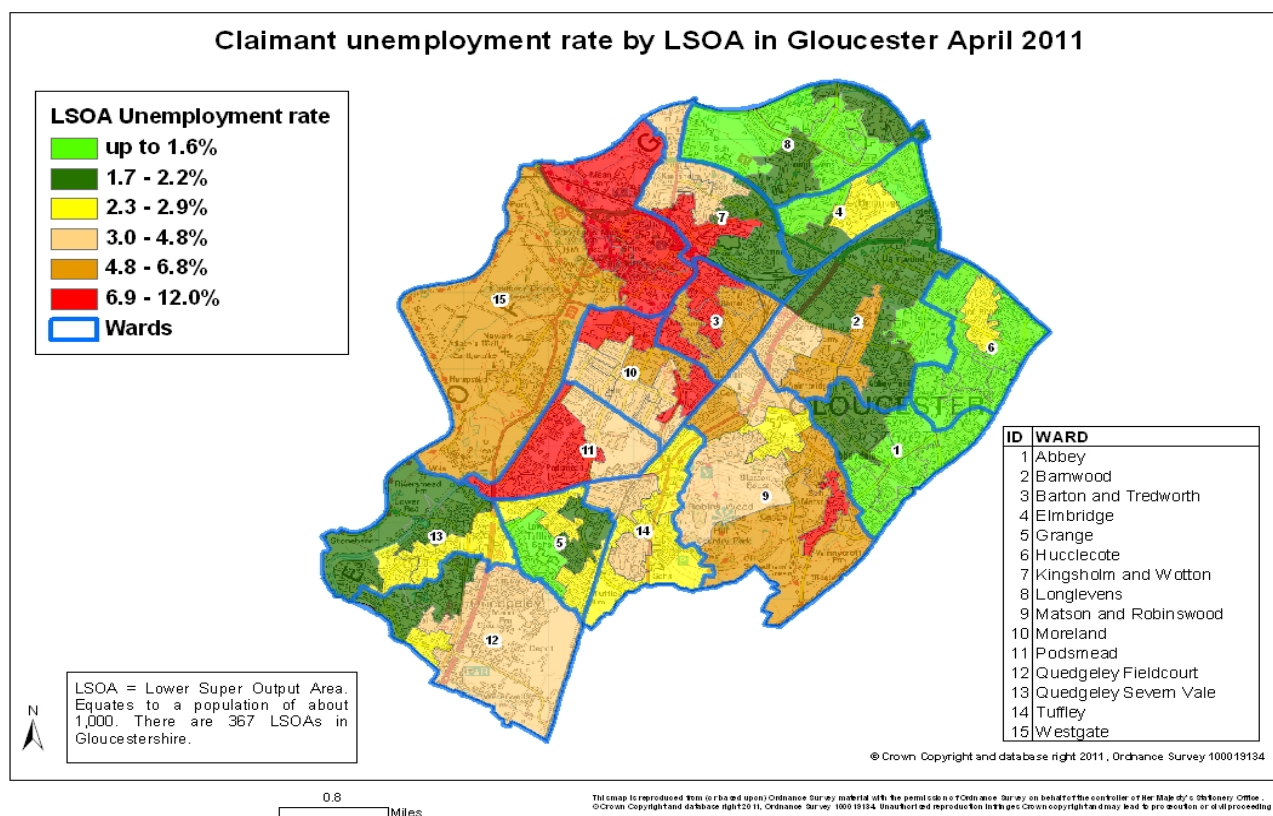
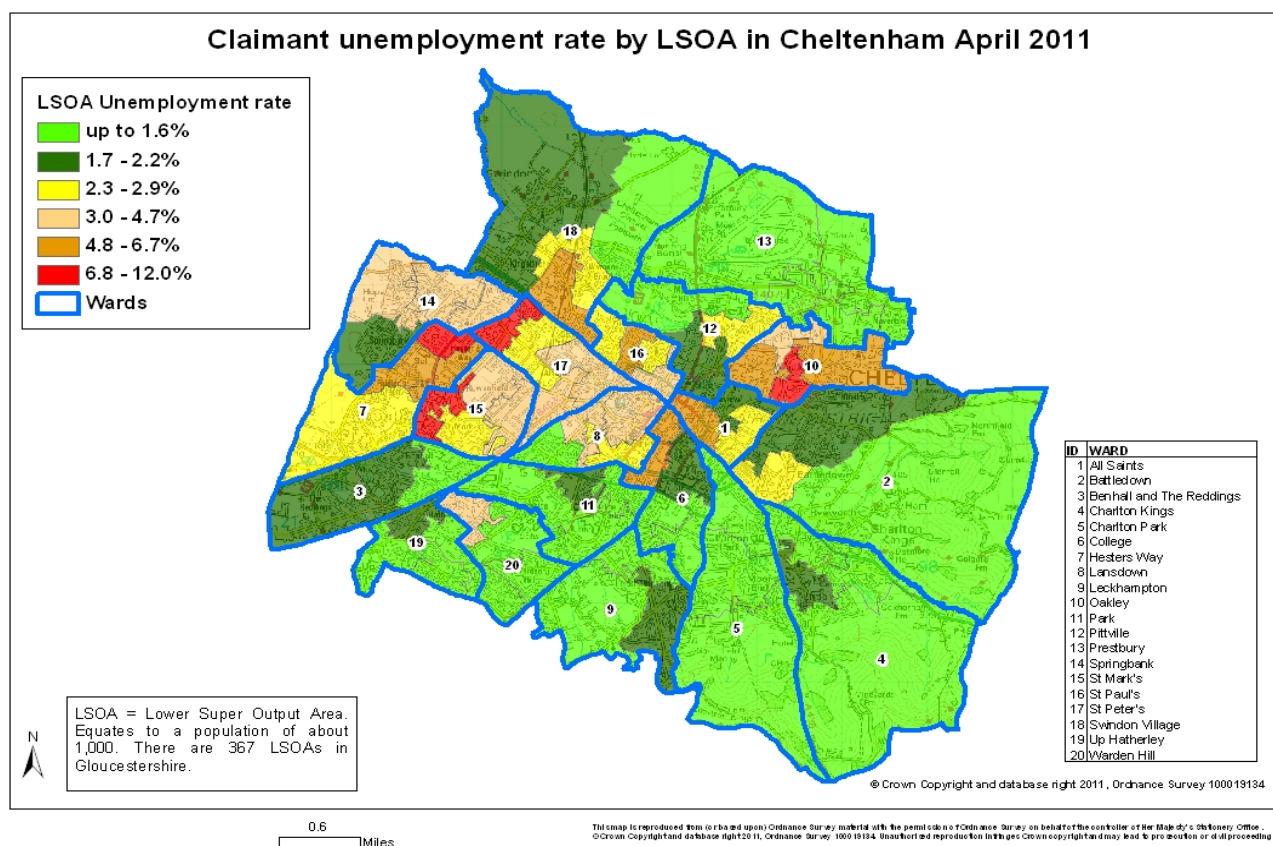
\* 1 = "best" and 142 = "worst"

Table 10 shows overall claimant rates for Tewkesbury District wards and their position relative to all wards in Gloucestershire.

## PART 5: MAP SHOWING DISTRIBUTION OF CLAIMANT RATE ACROSS GLOUCESTERSHIRE



## PART 5: MAP SHOWING DISTRIBUTION OF CLAIMANT RATE ACROSS GLOUCESTERSHIRE





## PART 6: YOUNG PEOPLE NOT IN EDUCATION, EMPLOYMENT OR TRAINING (NEET) IN GLOUCESTERSHIRE

Data provided by Prospects, the Connexions service in Gloucestershire on the situation of young people (16-18) in Gloucestershire who are not in education, employment or formal training.

Connexions Gloucestershire is required to report performance with the 16-18 age range against nationally defined criteria for counting the NEET group. The NEET group includes young people actively seeking education, employment or training as well as those young people who are either not yet ready or who are unable to access these opportunities because of their personal circumstances. The figures quoted below include young people in both of these categories.

### Summary

As at the end of April 2011 there were 589 young people aged 16-18 not in education, employment or training in Gloucestershire and this figure translates into an adjusted (\*) 16-18 NEET population of 4.1%. The total number of NEET decreased by 20 young people in April 2011 compared to March 2011. 2 Districts saw an increase in their NEET figure, 3 saw a decrease and 1 stayed the same.

### Total NEET Group by District Area April 2011

	Cheltenham	Cotswold	Forest	Gloucester	Stroud	Tewkesbury	Total
Number of NEET	146	42	70	180	96	55	589
Cohort	2496	1981	2237	4376	2538	1812	15440
% NEET	5.8%	2.1%	3.1%	4.1%	3.8%	3.0%	4.1%

If you would like to receive any further information on Gloucestershire's NEET strategy then please contact [Ruth.Critchlow@gloucestershire.gov.uk](mailto:Ruth.Critchlow@gloucestershire.gov.uk) or telephone 01452 551267.

(\*) Adjustment includes a proportion of young people aged 16-18 whose outcomes are not-known to Connexions Gloucestershire