

Unemployment Bulletin

Issue 10 May 2009

Contents

Part 1: Summary

A summary of unemployment data at district, County, regional and national level

1

Part 2: County

Unemployment figures for the County compared to the South West and the rest of the UK

3

Part 3: Districts

A comparative break down of unemployment figures by district

4

Part 4: Wards

Further breakdown of unemployment figures by ward:

Cheltenham

6

Cotswolds

8

Forest of Dean

10

Gloucester

12

Stroud

14

Tewkesbury

16

Part 5: Map

Distribution of claimant rate across Gloucestershire

18

Part 6: Young People

Data about Young People Not in Education, Employment or Training (NEET)

20

INTRODUCTION

The Unemployment Bulletin provides a monthly update on unemployment data for Gloucestershire, the South West region and the United Kingdom. It is produced by the Economic section of the County Council Chief Executive's Support Unit Research Team. The data is sourced from the Office for National Statistics via Nomis (www.nomis.co.uk).

The claimant count measures the number of people claiming unemployment-related benefit (currently Job Seeker's allowance). The claimant rate is the number of claimants as a proportion of the working age population.

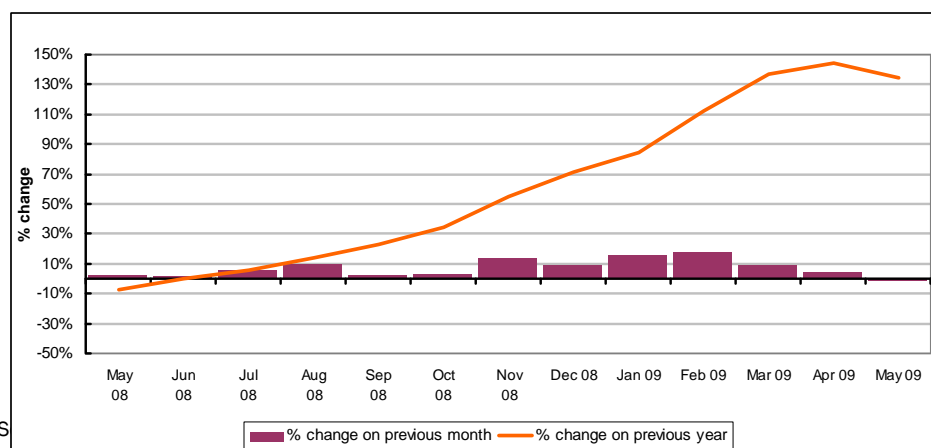
PART 1: SUMMARY

The claimant rate in Gloucestershire was 3.5% in May 2009. This was a decrease of 0.1% on the April 2009 figure. This is the first time that the rate has decreased since September 2007. The UK rate has remained the same at 4.1% between April and May 2009 with the South West rate remaining the same at 3.1%. Gloucestershire's rate remains above the South West average of 3.1%, but 0.6% lower than the UK average of 4.1%.

The claimant count in Gloucestershire in May 2009 fell by 214 people. The amount of people claiming in May 2009 was 1.7% lower than the number in April 2009 compared to a 0.9% decrease in the South West and a 0.5% increase for the UK.

The claimant count in Gloucestershire has decreased for the first time since March 2008. The count was 135% higher in May 2009 than at the same point in the previous year as shown in the graph below.

Gloucestershire claimants - Month on Month and Year on Year change: May 2008 to May 2009



Produced by:

The Research Team (Economics)
Chief Executive Support Unit
Gloucestershire County Council
June 2009

DISTRICTS AT A GLANCE

At a glance unemployment information grouped by district. Includes:

Claim count: Total number of people claiming Job Seekers Allowance in May 2009

Compared to last month: How much larger/smaller May's claim count is compared to April, expressed as a %

Claimant rate: The % of working population claiming Job Seekers Allowance in May 2009

Highest claiming ward: The ward with the highest claim count in that district and the rate

CHELTENHAM BOROUGH

Claim count:	2,844
Compared to last month:	- 0.6%
Claimant rate:	4.1%
Highest claiming ward	Hesters Way (8.8%)

GLOUCESTER CITY

Claim count:	3,273
Compared to last month:	- 4.9%
Claimant rate:	4.6%
Highest claiming ward	Westgate (8.3%)

COTSWOLD DISTRICT

Claim count:	1,067
Compared to last month:	-2.5%
Claimant rate:	2.2%
Highest claiming ward	Cirencester Watermoor (5.0%)

STROUD DISTRICT

Claim count:	2,044
Compared to last month:	+4.7%
Claimant rate:	3.1%
Highest claiming ward	Central (7.4%)

FOREST OF DEAN

Claim count:	1,784
Compared to last month:	- 4.1%
Claimant rate:	3.7%
Highest claiming ward	Cinderford West (6.0%)

TEWKESBURY BOROUGH

Claim count:	1,468
Compared to last month:	-1.2%
Claimant rate:	3.1%
Highest claiming ward	Tewkesbury Priors Park (6.7%)

YOUNG PEOPLE NOT IN EDUCATION, EMPLOYMENT OR TRAINING (NEET)

As at the end of May 2009 there were 626 young people aged 16-18 not in education, employment or training in Gloucestershire and this figure translates into an adjusted (*) 16-18 NEET population of 4.3%

PART 2: UK, SW AND GLOUCESTERSHIRE INDICATORS

The unemployment situation in Gloucestershire compared to the South West and the UK.

Claimant Rate

Figure 1: Claimant Rate for Gloucestershire, the South West and UK over the past year

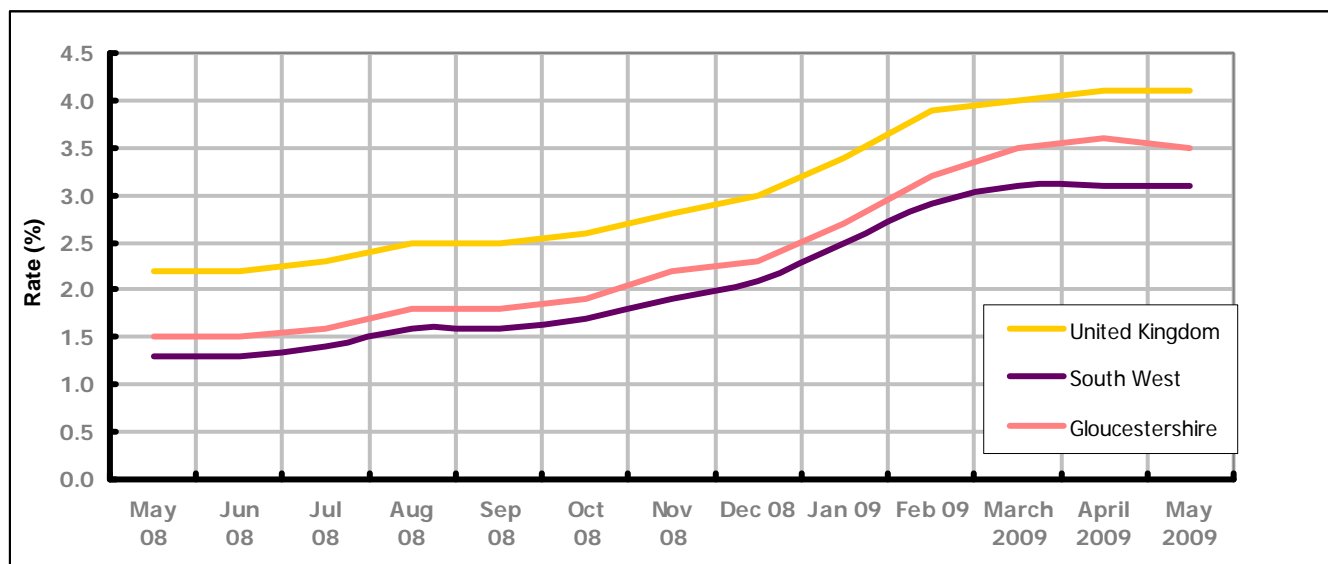


Figure 1 shows the claimant rate for Gloucestershire at 3.5% in May 2009. The rate has remained slightly higher than the South West average over the past year, but persistently lower by approximately 0.6% against the UK average during the same period. May 2009 represented a 0.1% decrease on April 2009.

Claimant Count

Table 1: Analysis of UK, South West and Gloucestershire Claimant Counts

Area	Claimant Count in May 2009	% change on April 2009	Average % increase over the last six months	Consecutive months increasing
UK	1,564,978	+0.5%	+5.2%	13
South West	96,527	-0.9%	+6.4%	0
Gloucestershire	12,480	-1.7%	+7.2%	0

Table 1 shows that in May 2009, the number of claimants in Gloucestershire was 1.7% lower than the number in April 2009. This is 1.2% lower than the UK figure and 0.8% lower than the South West.

The average growth in claimants in Gloucestershire for the six months to May 2009 was 7.2%. This is 2.0% higher than the UK average and 0.8% higher than the South West region.

PART 3: LOCAL AUTHORITY DISTRICT ANALYSIS

Claimant Rate and Claimant Count

Figure 2: Claimant Rate (%) across Gloucestershire - May 2009

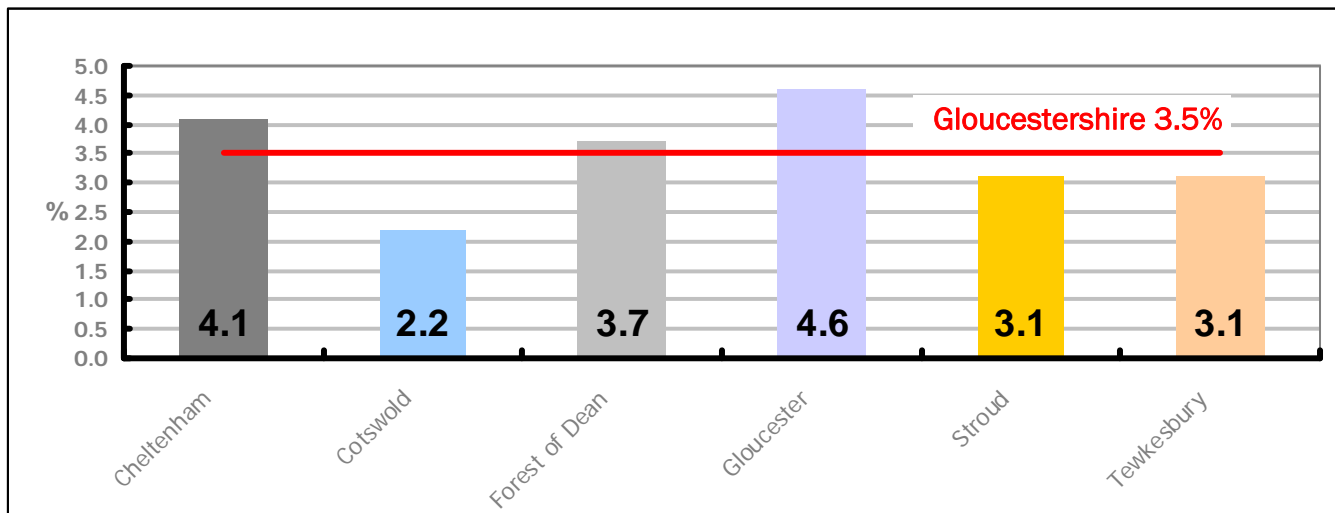


Figure 2 shows the claimant rate for May 2009 in Gloucestershire. Between April 2009 and May 2009, Stroud district increased by 0.1%, Cheltenham and Cotswold remained the same and Forest of Dean, Gloucester and Tewkesbury districts all decreased (0.1%, 0.2% and 0.1% respectively).

Figure 3: Total claimants over the past year across Gloucestershire Districts

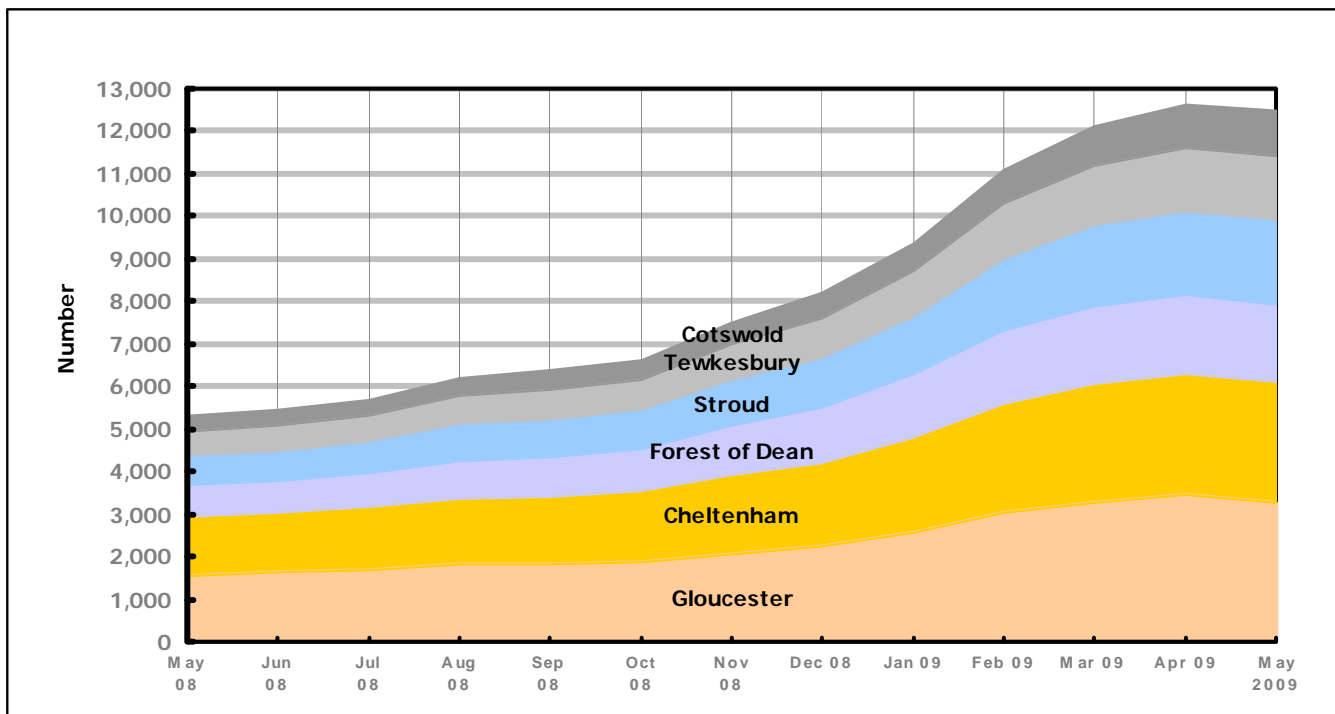


Figure 3 shows the overall claimant count by district for Gloucestershire over the past year. It demonstrates that apart from Stroud, the remaining districts have shown a decrease in the number of claimants for the first time in over a year.

Table 2: Analysis of Gloucestershire and District Claimant Counts

Total	May 09 Number	May 09 Rate	April 09 Number	April 09 Rate	Monthly change	% monthly change	Monthly change of rate
Gloucestershire	12,480	3.5	12,694	3.6	-214	-1.7%	-0.1
Cheltenham	2,844	4.1	2,860	4.1	-16	-0.6%	0.0
Cotswold	1,067	2.2	1,094	2.2	-27	-2.5%	0.0
Forest of Dean	1,784	3.7	1,861	3.8	-77	-4.1%	-0.1
Gloucester	3,273	4.6	3,441	4.8	-168	-4.9%	-0.2
Stroud	2,044	3.1	1,952	3.0	92	4.7%	0.1
Tewkesbury	1,468	3.1	1,486	3.2	-18	-1.2%	-0.1

Table 2 shows the change in the claimant count in May 2009 compared to April 2009. Every district except Stroud experienced a decrease. The greatest decrease was in Gloucester.

Table 3: Analysis of Male Gloucestershire and District Claimant Counts

Male	May 09 Number	May 09 Rate	April 09 Number	April 09 Rate	Monthly change	% monthly change	Monthly change of rate
Gloucestershire	9,298	5.0	9,435	5.1	-137	-1.5%	-0.1
Cheltenham	2,149	5.8	2,165	5.9	-16	-0.7%	-0.1
Cotswold	782	3.0	819	3.2	-37	-4.5%	-0.2
Forest of Dean	1,291	5.0	1,332	5.2	-41	-3.1%	-0.2
Gloucester	2,502	6.8	2,601	7.0	-99	-3.8%	-0.2
Stroud	1,517	4.4	1,442	4.2	75	5.2%	0.2
Tewkesbury	1,057	4.3	1,076	4.4	-19	-1.8%	-0.1

Table 3 shows the change in the male claimant count in May 2009 compared to April 2009. Again, every district except Stroud experienced a decrease.

Table 4: Analysis of Female Gloucestershire and District Claimant Counts

Female	May 09 Number	May 09 Rate	April 09 Number	April 09 Rate	Monthly change	% monthly change	Monthly change of rate
Gloucestershire	3,182	1.9	3,259	2.0	-77	-2.4%	-0.1
Cheltenham	695	2.1	695	2.1	0	0.0%	0.0
Cotswold	285	1.2	275	1.2	10	3.6%	0.0
Forest of Dean	493	2.1	529	2.3	-36	-6.8%	-0.2
Gloucester	771	2.3	840	2.5	-69	-8.2%	-0.2
Stroud	527	1.7	510	1.6	17	3.3%	0.1
Tewkesbury	411	1.8	410	1.8	1	0.2%	0.0

Table 4 shows the change in the female claimant count in May 2009 compared to April 2009. Gloucester and Forest of Dean experienced a decrease while Cotswold, Stroud and Tewkesbury experienced an increase, with Cheltenham remaining the same.

PART 4: LOCAL AUTHORITY DISTRICT AND WARD ANALYSIS

This section covers the six districts and a comparison of their constituent wards.

4.1 Cheltenham Borough

Claimant Rate and Claimant Count

Figure 4: Cheltenham Borough claimant rate over the last year

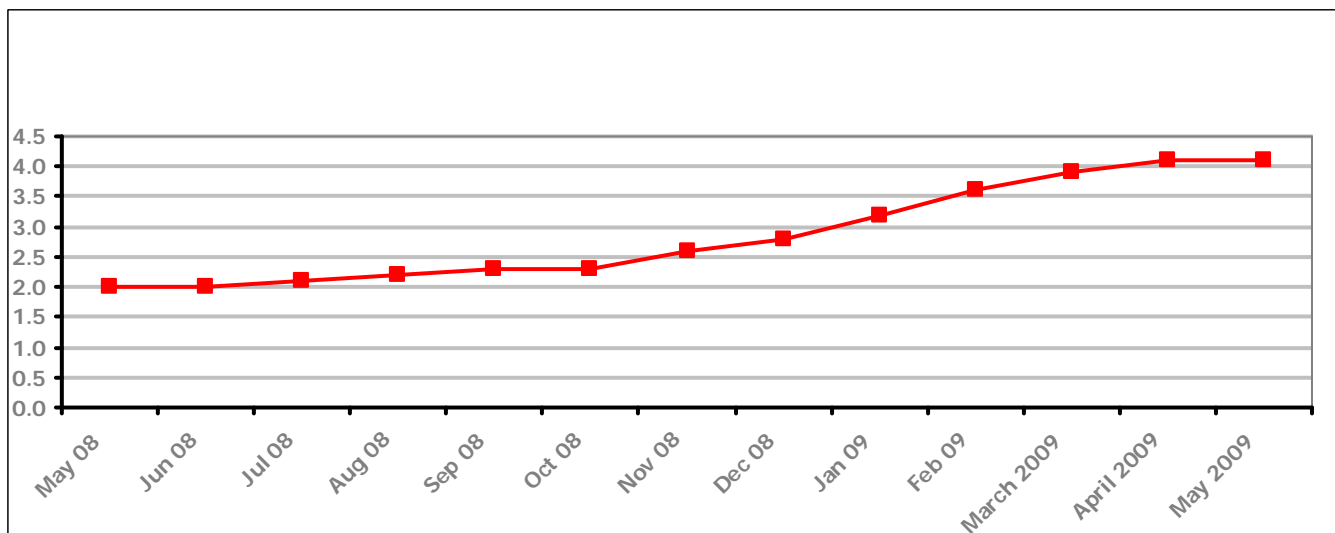


Figure 4 shows the claimant rate in Cheltenham remained the same as last month at 4.1%. The rate had been climbing for twelve consecutive months before levelling.

Figure 5: Cheltenham Borough claimants - Month on Month and Year on Year change

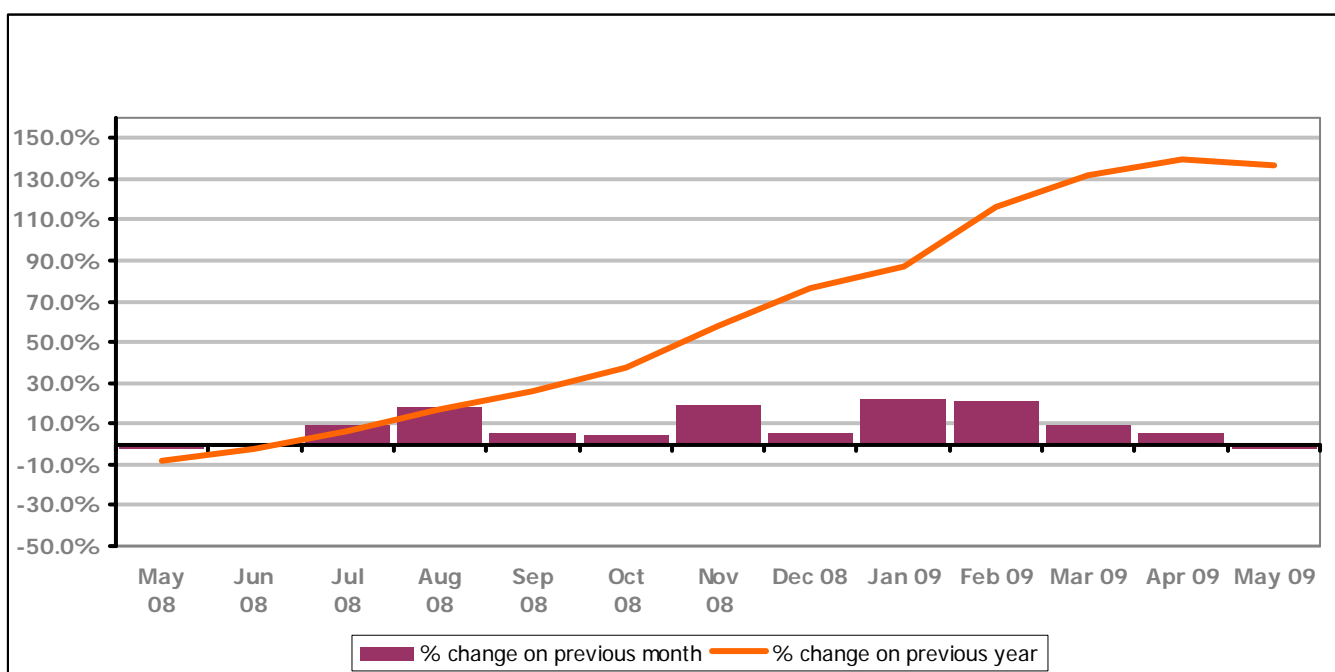


Figure 5 shows the claimant count decreasing in May 2009 after continually increasing each month since July 2008. In addition, the change on the previous year has gone down in May 2009 compared to April 2009.

PART 4: LOCAL AUTHORITY DISTRICT AND WARD ANALYSIS

4.1 Cheltenham Borough continued...

Figure 6: Claimant rates across Cheltenham Borough wards - May 2009

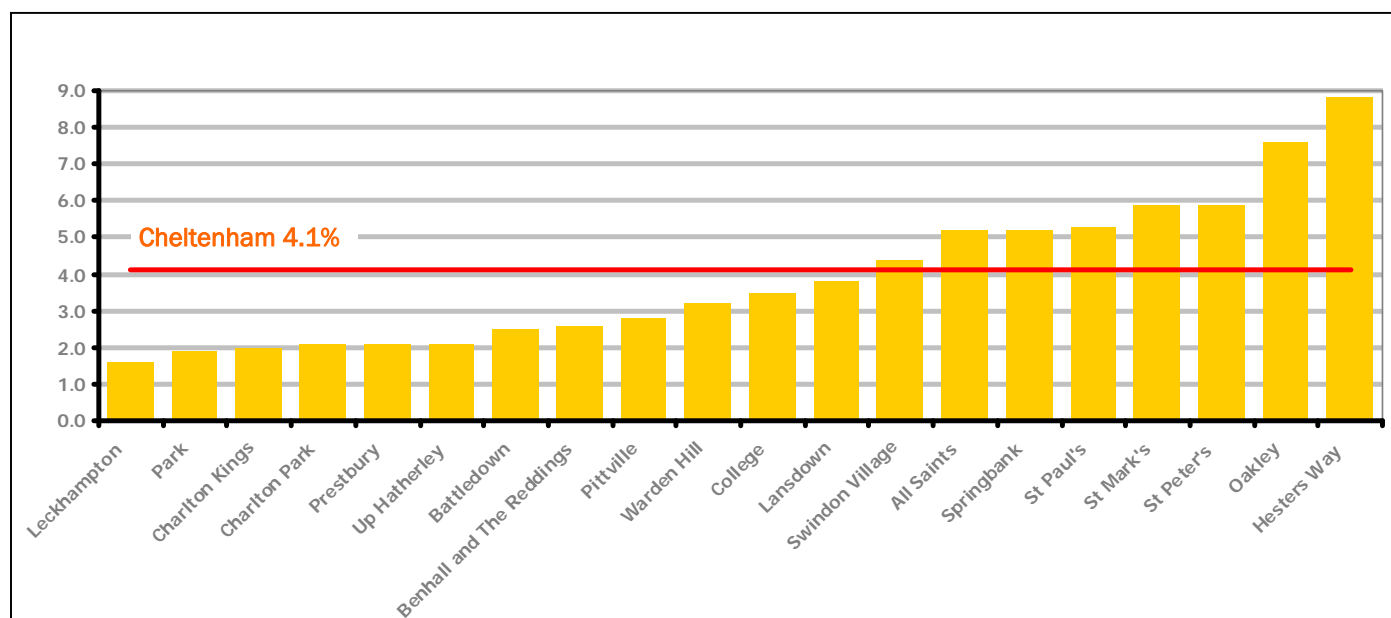


Figure 6 shows the claimant rates for Cheltenham Borough wards. The red line represents the average claimant rate across the Borough of 4.1%. Eight wards lie above the average.

Table 5: Analysis of Claimant Count at Cheltenham Borough ward level - May 2009

District	Ward	Rate	Rank*	
Cheltenham	Leckhampton	1.6	14	
Cheltenham	Park	1.9	25	
Cheltenham	Charlton Kings	2.0	30	
Cheltenham	Charlton Park	2.1	35	
Cheltenham	Prestbury	2.1	35	
Cheltenham	Up Hatherley	2.1	35	
Cheltenham	Battledown	2.5	60	
Cheltenham	Benhall and The Reddings	2.6	68	
Cheltenham	Pittville	2.8	72	
Cheltenham	Warden Hill	3.2	86	
Cheltenham	College	3.5	93	
Cheltenham	Lansdown	3.8	97	
Cheltenham	Swindon Village	4.4	114	
Cheltenham	All Saints	5.2	122	
Cheltenham	Springbank	5.2	122	
Cheltenham	St Paul's	5.3	126	
Cheltenham	St Mark's	5.9	130	
Cheltenham	St Peter's	5.9	130	
Cheltenham	Oakley	7.6	140	
Cheltenham	Hesters Way	8.8	142	

bottom 10% of county
 first quartile of county
 second quartile of county
 third quartile of county
 fourth quartile of county
 highest 10% of county

* 1 = "best" and 142 = "worst"

Table 5 shows overall claimant rates for Cheltenham Borough wards and their position relative to all wards in Gloucestershire.

PART 4: LOCAL AUTHORITY DISTRICT AND WARD ANALYSIS

4.2 Cotswold District

Claimant Rate and Claimant Count

Figure 7: Cotswold District claimant rate over the last year

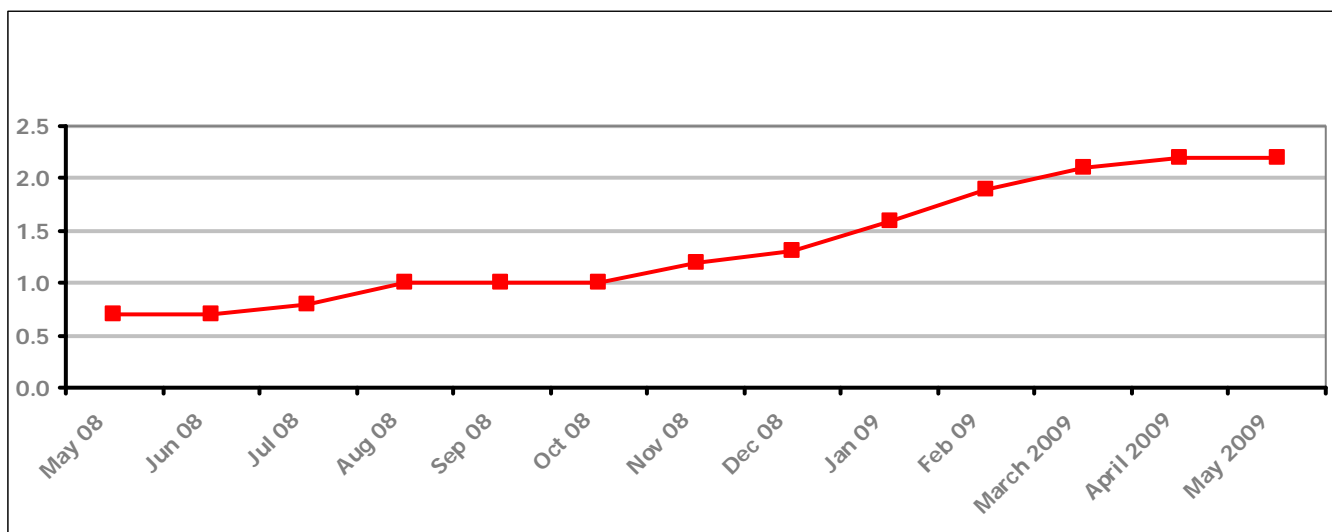


Figure 7 shows the claimant rate in Cotswold District decreased in May 2009 to 2.2%. Prior to this the rate had been increasing since June 2008.

Figure 8: Cotswold District claimants - Month on Month and Year on Year change

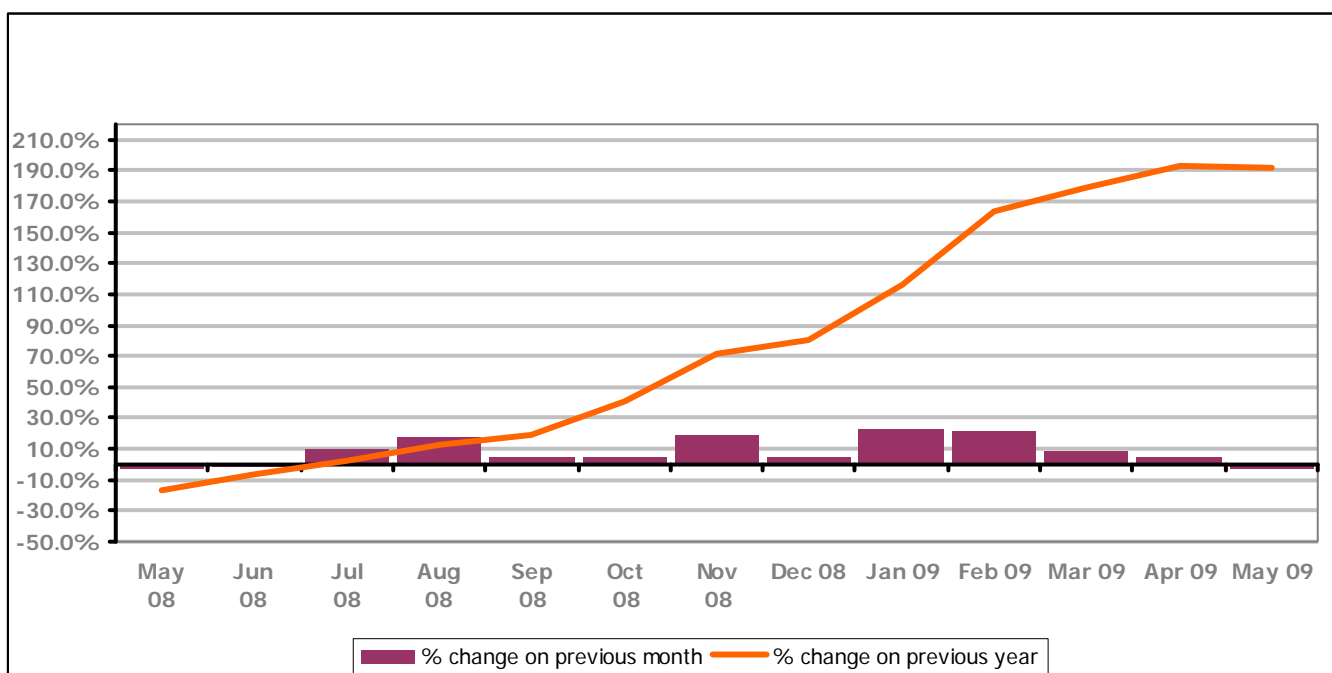


Figure 8 shows the claimant count decreasing in May 2009 after continually increasing since July 2008. The change on the previous year has remained the same in May 2009 as April 2009.

PART 4: LOCAL AUTHORITY DISTRICT AND WARD ANALYSIS

4.2 Cotswold District continued...

Figure 9: Claimant rates across Cotswold District wards - May 2009

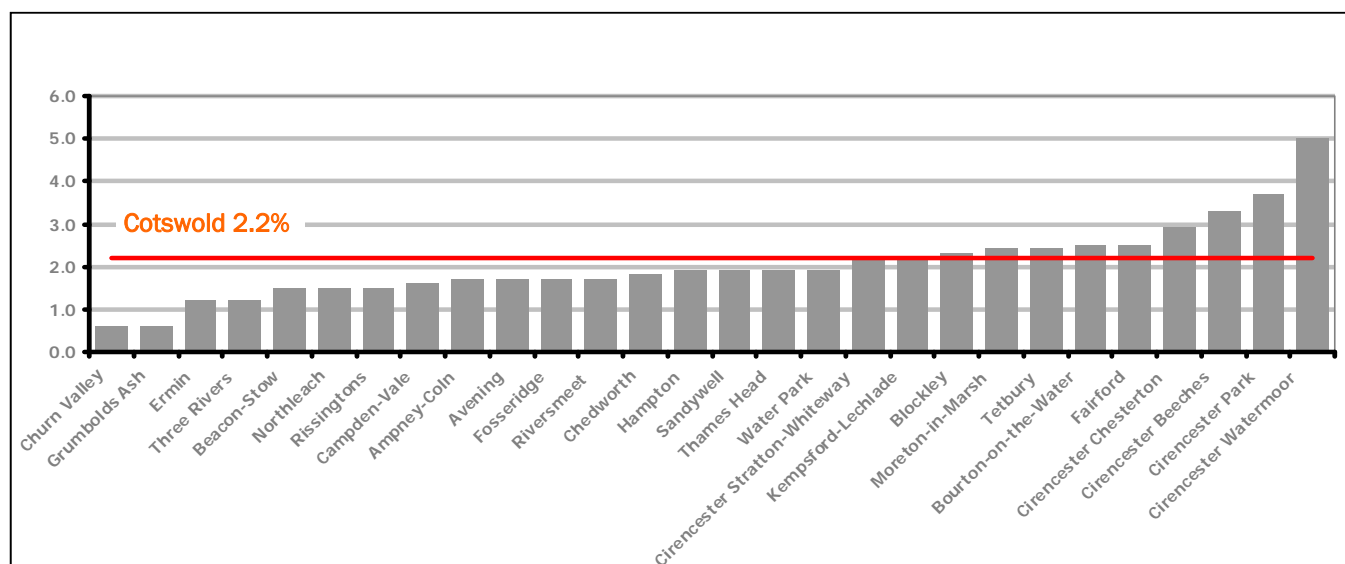
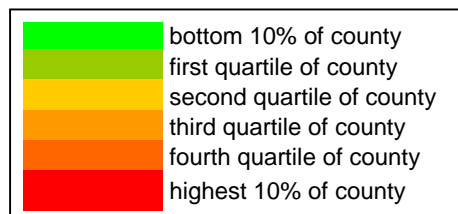


Figure 9 shows the claimant rates for Cotswold District wards. The red line represents the average claimant rate across the District of 2.2%. Nine wards lie above the average.

Table 6: Analysis of Claimant Count at Cotswold District ward level - May 2009

District	Ward	Rate	Rank*
Cotswolds	Churn Valley	0.6	1
Cotswolds	Grumbolds Ash	0.6	1
Cotswolds	Ermin	1.2	5
Cotswolds	Three Rivers	1.2	5
Cotswolds	Beacon-Stow	1.5	10
Cotswolds	Northleach	1.5	10
Cotswolds	Rissingtons	1.5	10
Cotswolds	Campden-Vale	1.6	14
Cotswolds	Ampney-Coln	1.7	17
Cotswolds	Avening	1.7	17
Cotswolds	Fosseridge	1.7	17
Cotswolds	Riversmeet	1.7	17
Cotswolds	Chedworth	1.8	21
Cotswolds	Hampton	1.9	25
Cotswolds	Sandywell	1.9	25
Cotswolds	Thames Head	1.9	25
Cotswolds	Water Park	1.9	25
Cotswolds	Cirencester Stratton-Whiteway	2.2	44
Cotswolds	Kempsford-Lechlade	2.2	44
Cotswolds	Blockley	2.3	51
Cotswolds	Moreton-in-Marsh	2.4	53
Cotswolds	Tetbury	2.4	53
Cotswolds	Bourton-on-the-Water	2.5	60
Cotswolds	Fairford	2.5	60
Cotswolds	Cirencester Chesterton	2.9	75
Cotswolds	Cirencester Beeches	3.3	90
Cotswolds	Cirencester Park	3.7	95
Cotswolds	Cirencester Watermoor	5.0	121



* 1 = "best" and 142 = "worst"

Table 6 shows overall claimant rates for Cotswold District wards and their position relative to all wards in Gloucestershire.

PART 4: LOCAL AUTHORITY DISTRICT AND WARD ANALYSIS

4.3 Forest of Dean District

Claimant Rate and Claimant Count

Figure 10: Forest of Dean District claimant rate over the last year

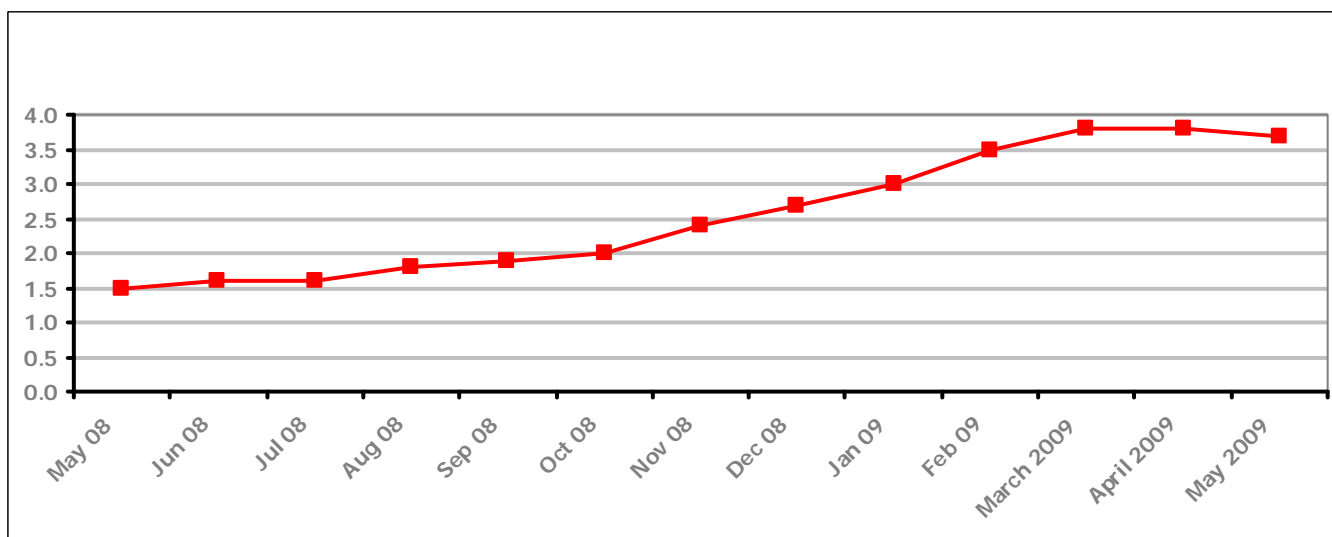


Figure 10 shows the claimant rate in the Forest of Dean decreased in May 2009 to 3.7%. Before this the rate had been increasing since July 2008.

Figure 11: Forest of Dean District claimants - Month on Month and Year on Year change

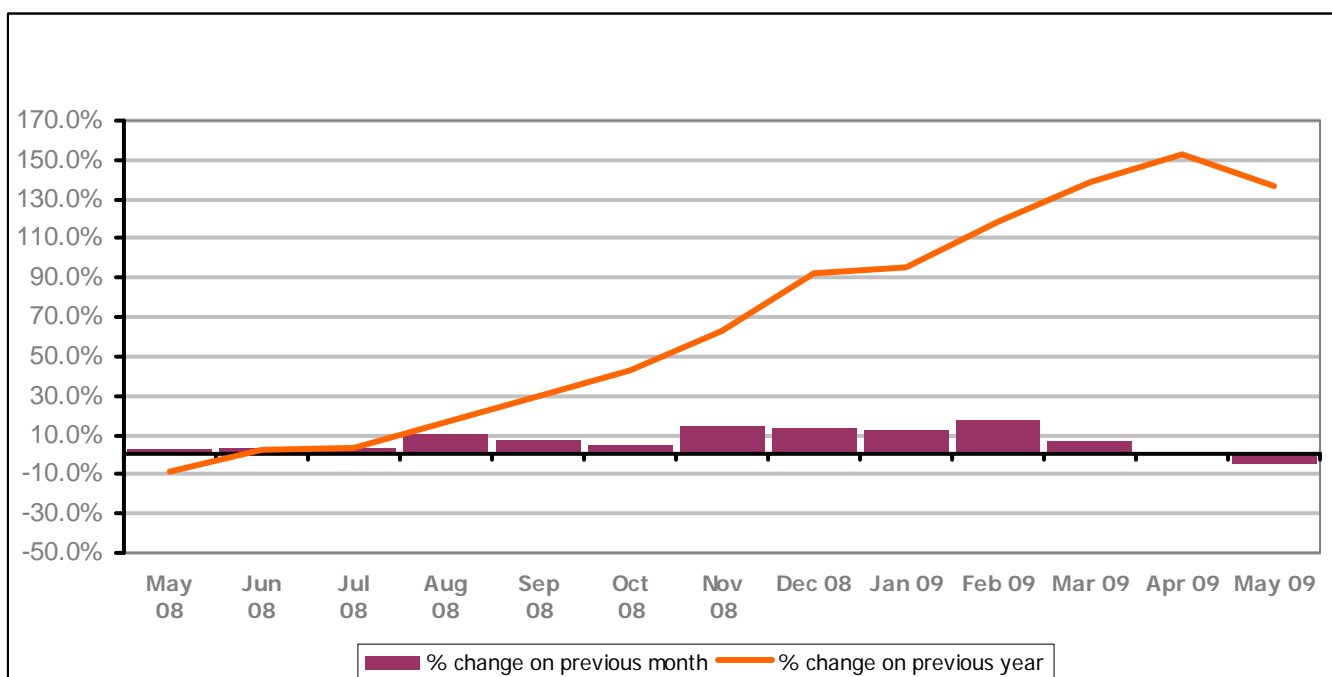


Figure 11 shows the claimant count decreased in May 2009 after continually increasing since May 2008. The change on the previous year has decreased between May 2009 and April 2009

PART 4: LOCAL AUTHORITY DISTRICT AND WARD ANALYSIS

4.3 Forest of Dean District continued...

Figure 12: Claimant rates across Forest of Dean District wards - May 2009

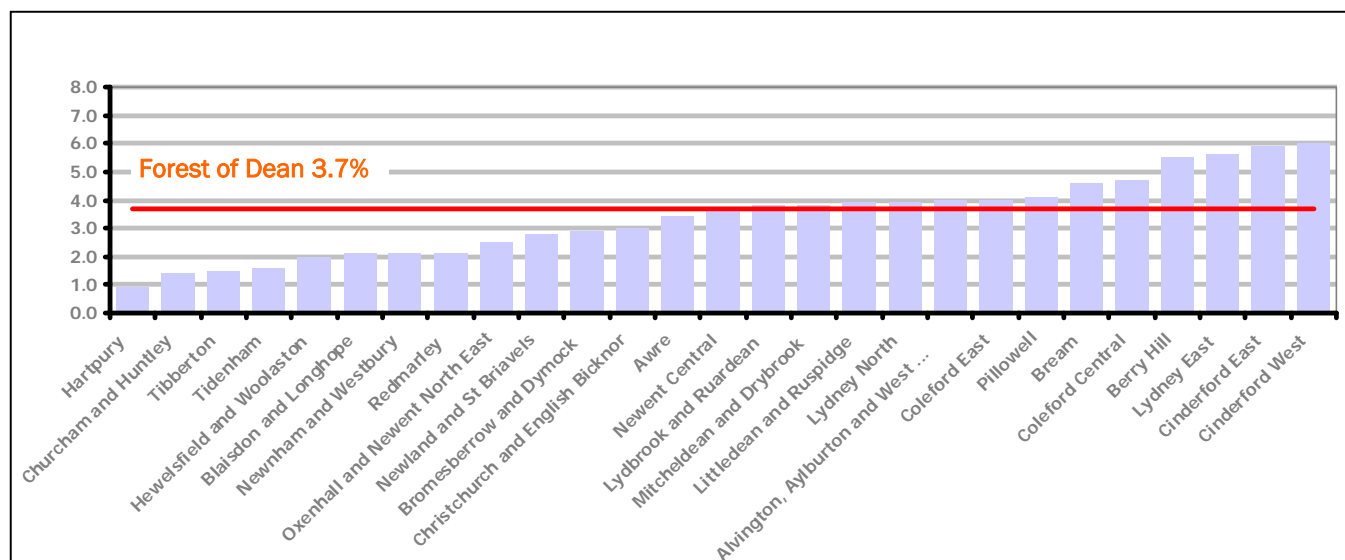
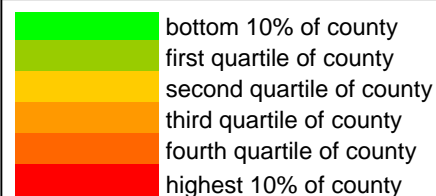


Figure 12 shows the claimant rates for Forest of Dean District wards. The red line represents the average claimant rate across the District of 3.7%. Thirteen wards lie above the average.

Table 7: Analysis of Claimant Count at Forest of Dean District ward level - May 2009

District	Ward	Rate	Rank*
Forest	Hartpur	0.9	4
Forest	Churcham and Huntley	1.4	9
Forest	Tibberton	1.5	10
Forest	Tidenham	1.6	14
Forest	Hewelsfield and Woolaston	2.0	30
Forest	Blaisdon and Longhope	2.1	35
Forest	Newnham and Westbury	2.1	35
Forest	Redmarley	2.1	35
Forest	Oxenhall and Newent North East	2.5	60
Forest	Newland and St Briavels	2.8	72
Forest	Bromesberrow and Dymock	2.9	75
Forest	Christchurch and English Bicknor	3.0	80
Forest	Awre	3.4	92
Forest	Newent Central	3.7	95
Forest	Lydbrook and Ruardean	3.8	97
Forest	Mitcheldean and Drybrook	3.8	97
Forest	Littledean and Ruspidge	3.9	102
Forest	Lydney North	3.9	102
Forest	Alvington, Aylburton and West Lydney	4.0	105
Forest	Coleford East	4.0	105
Forest	Pillowell	4.1	110
Forest	Bream	4.6	117
Forest	Coleford Central	4.7	119
Forest	Berry Hill	5.5	127
Forest	Lydney East	5.6	128
Forest	Cinderford East	5.9	130
Forest	Cinderford West	6.0	133



* 1 = "best" and 142 = "worst"

Table 7 shows overall claimant rates for the Forest of Dean District wards and their position relative to all wards in Gloucestershire.

PART 4: LOCAL AUTHORITY DISTRICT AND WARD ANALYSIS

4.4 Gloucester City

Claimant Rate and Claimant Count

Figure 13: Gloucester City claimant rate over the last year

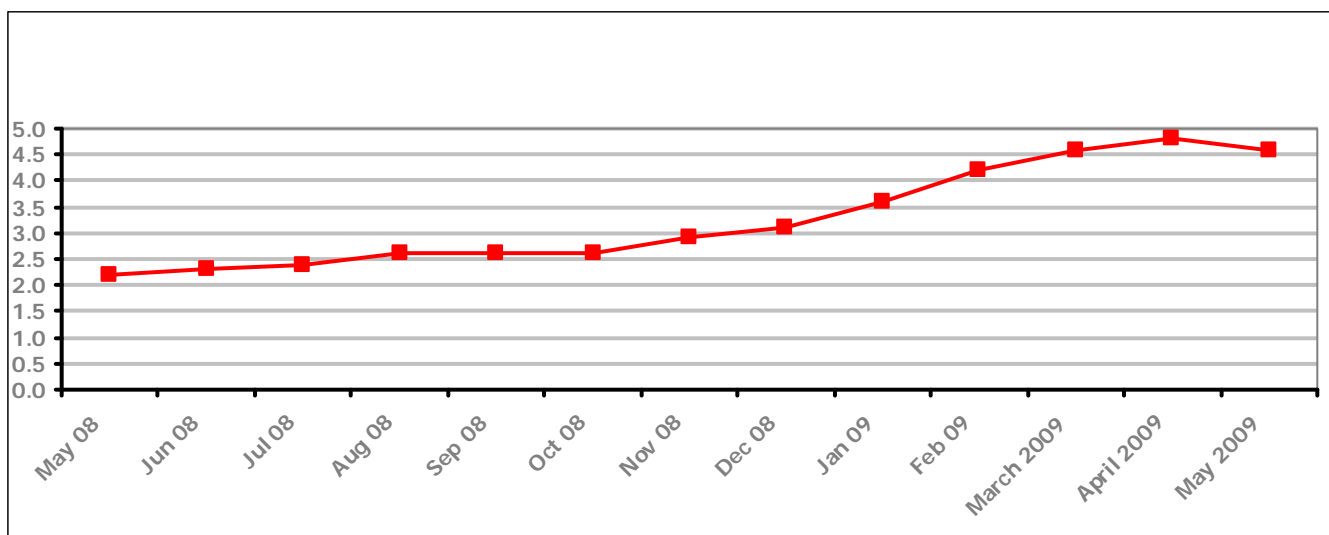


Figure 13 shows the claimant rate for Gloucester City decreased in May 2009 to 4.6%. The rate prior to this had been increasing since May 2008.

Figure 14: Gloucester City claimants - Month on Month and Year on Year change

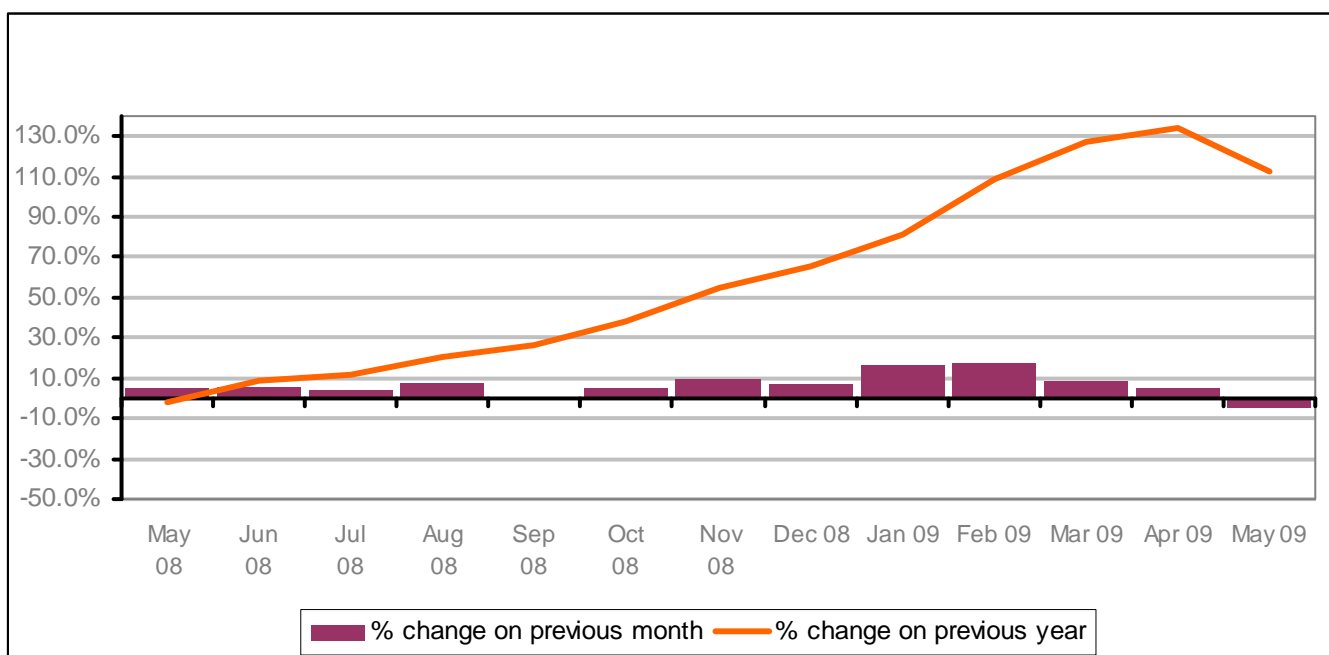


Figure 14 shows the monthly claimant count decreased in May 2009 by 4.9% after undergoing a continual increase since the previous May. The change on the previous year has decreased between April 2009 and May 2009.

PART 4: LOCAL AUTHORITY DISTRICT AND WARD ANALYSIS

4.4 Gloucester City continued...

Figure 15: Claimant rates across Gloucester City wards - May 2009

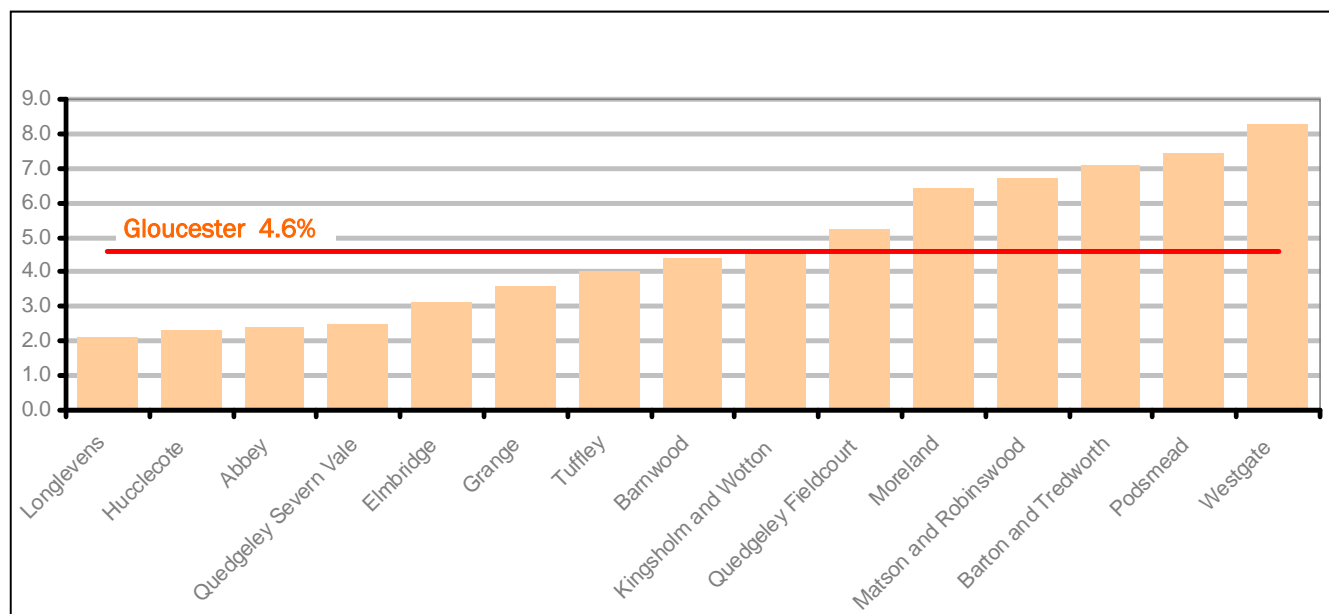
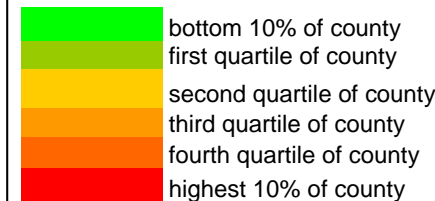


Figure 15 shows the claimant rates for Gloucester City district wards. The red line represents the average claimant rate across the City of 4.6%. Six wards lie above the average.

Table 8: Analysis of Claimant Count at Gloucester City ward level - May 2009

District	Ward	Rate	Rank*
Gloucester	Longlevens	2.1	35
Gloucester	Hucclecote	2.3	51
Gloucester	Abbey	2.4	53
Gloucester	Quedgeley Severn Vale	2.5	60
Gloucester	Elmbridge	3.1	85
Gloucester	Grange	3.6	94
Gloucester	Tuffley	4.0	105
Gloucester	Barnwood	4.4	114
Gloucester	Kingsholm and Wotton	4.6	117
Gloucester	Quedgeley Fieldcourt	5.2	122
Gloucester	Moreland	6.4	134
Gloucester	Matson and Robinswood	6.7	135
Gloucester	Barton and Tredworth	7.1	137
Gloucester	Podsmead	7.4	138
Gloucester	Westgate	8.3	141



* 1 = "best" and 142 = "worst"

Table 8 shows overall claimant rates for Gloucester City wards and their position relative to all wards in Gloucestershire.

PART 4: LOCAL AUTHORITY DISTRICT AND WARD ANALYSIS

4.5 Stroud District

Claimant Rate and Claimant Count

Figure 16: Stroud District claimant rate over the last year

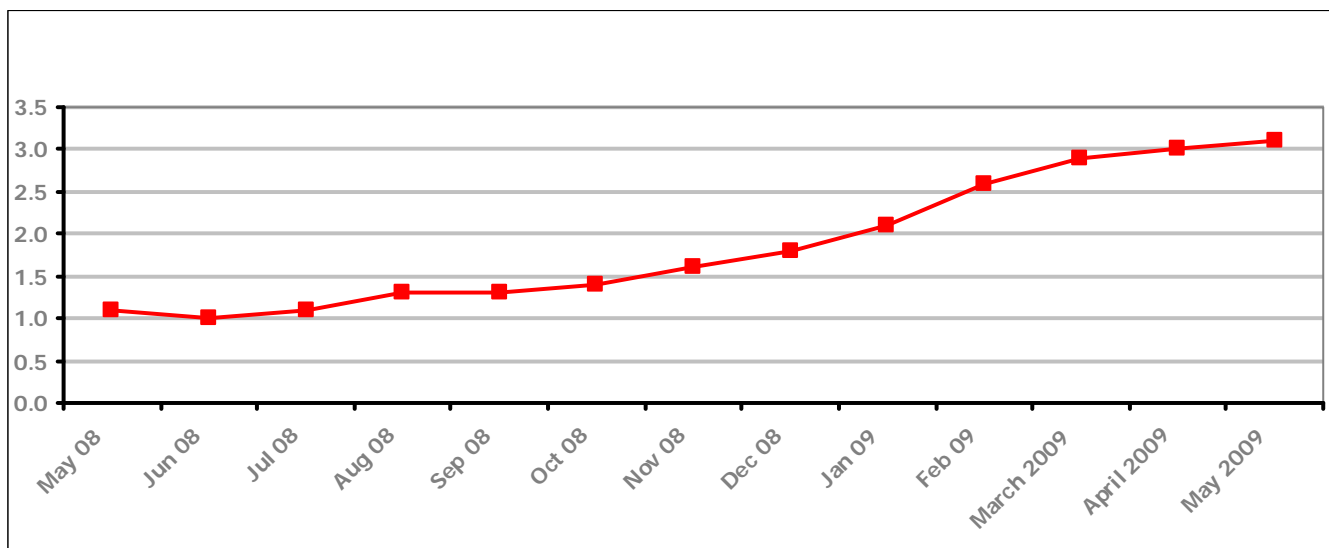


Figure 16 shows the claimant rate for Stroud District was at 3.1%, the highest it has been for over two years.

Figure 17: Stroud District claimants - Month on Month and Year on Year change

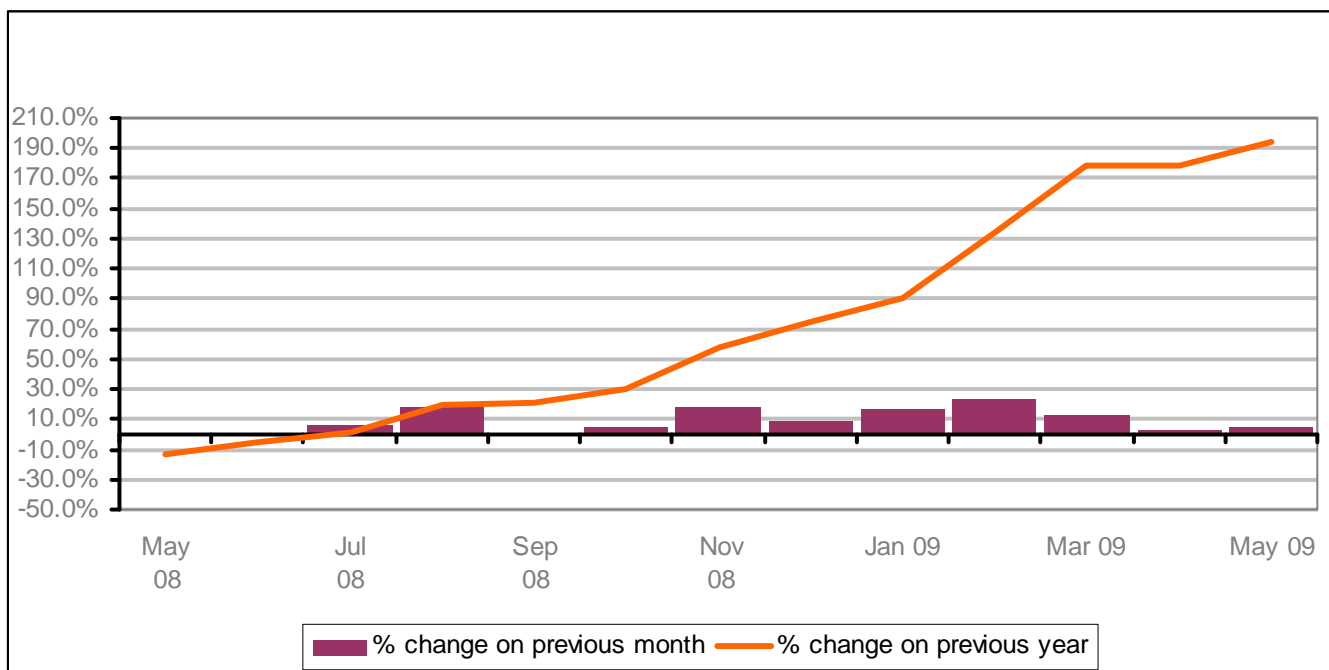


Figure 17 shows that when compared to the same month in the previous year, the claimant count has been increasing since July 2008. The May 2009 figure was 196% higher than it was in May 2008.

PART 4: LOCAL AUTHORITY AND DISTRICT ANALYSIS

4.5 Stroud District continued...

Figure 18: Claimant rates across Stroud District wards - May 2009

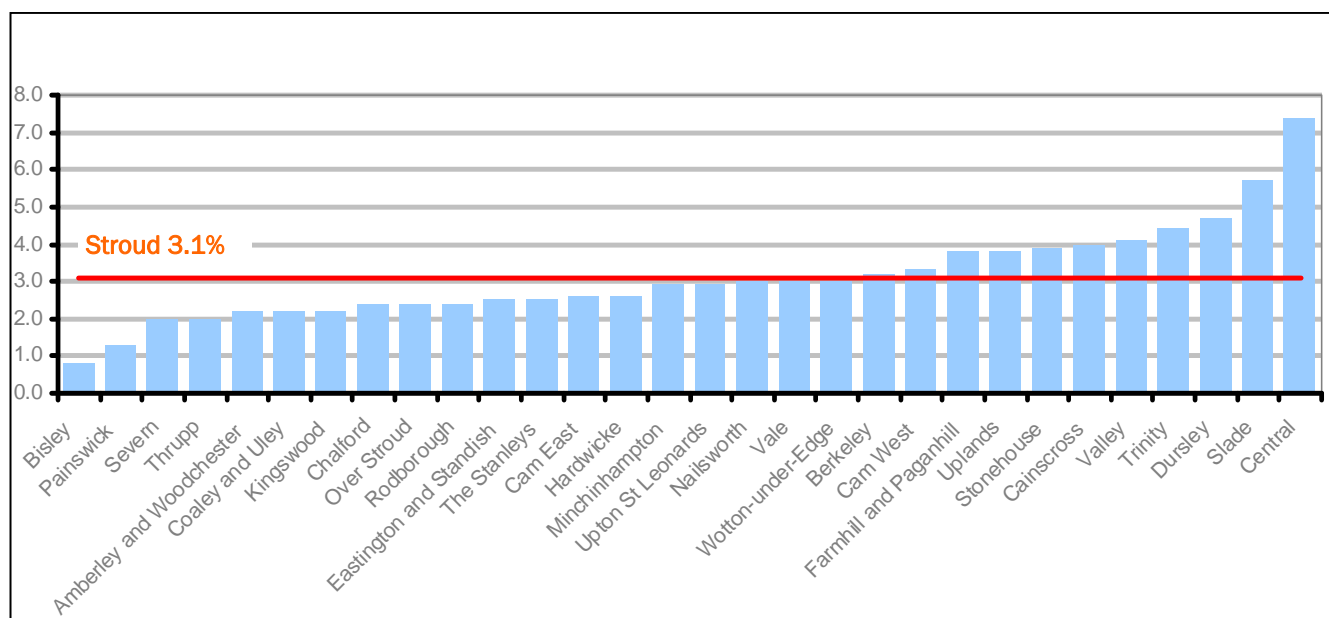
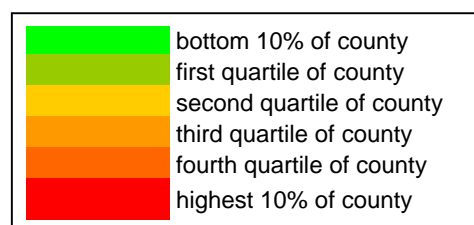


Figure 18 shows the claimant rates in Stroud District wards. The red line represents the average claimant rate across the District of 3.1% and eleven wards are above the average.

Table 9: Analysis of Claimant Count at Stroud District ward level - May 2009

District	Ward	Rate	Rank*
Stroud	Bisley	0.8	3
Stroud	Painswick	1.3	7
Stroud	Severn	2.0	30
Stroud	Thrupp	2.0	30
Stroud	Amberley and Woodchester	2.2	44
Stroud	Coaley and Uley	2.2	44
Stroud	Kingswood	2.2	44
Stroud	Chalford	2.4	53
Stroud	Over Stroud	2.4	53
Stroud	Rodborough	2.4	53
Stroud	Eastington and Standish	2.5	60
Stroud	The Stanleys	2.5	60
Stroud	Cam East	2.6	68
Stroud	Hardwicke	2.6	68
Stroud	Minchinhampton	2.9	75
Stroud	Upton St Leonards	2.9	75
Stroud	Nailsworth	3.0	80
Stroud	Vale	3.0	80
Stroud	Wotton-under-Edge	3.0	80
Stroud	Berkeley	3.2	86
Stroud	Cam West	3.3	90
Stroud	Farmhill and Paganhill	3.8	97
Stroud	Uplands	3.8	97
Stroud	Stonehouse	3.9	102
Stroud	Cainscross	4.0	105
Stroud	Valley	4.1	110
Stroud	Trinity	4.4	114
Stroud	Dursley	4.7	119
Stroud	Slade	5.7	129
Stroud	Central	7.4	138



* 1 = "best" and 142 = "worst"

Table 9 shows overall claimant rates for Stroud District wards and their position relative to all wards in Gloucestershire.

PART 4: LOCAL AUTHORITY DISTRICT AND WARD ANALYSIS

4.6 Tewkesbury District

Claimant Rate and Claimant Count

Figure 19: Tewkesbury District claimant rate over the last year

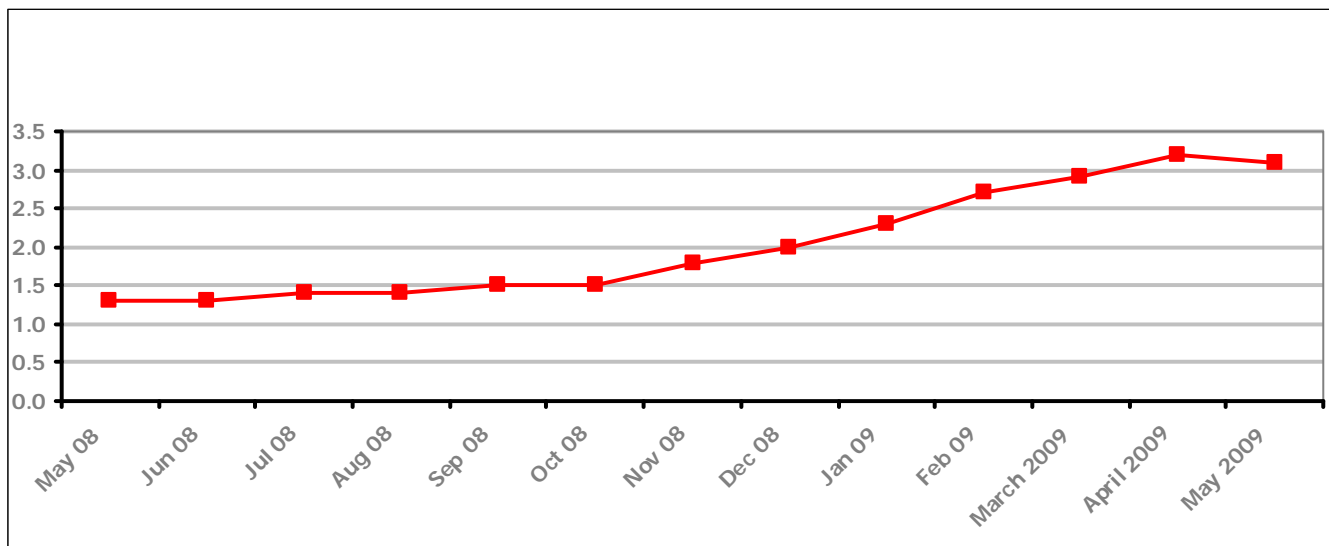


Figure 19 shows the claimant rate for Tewkesbury District decreased to 3.1% in May 2009, after having risen for over a year.

Figure 20: Tewkesbury District claimants - Month on Month and Year on Year change

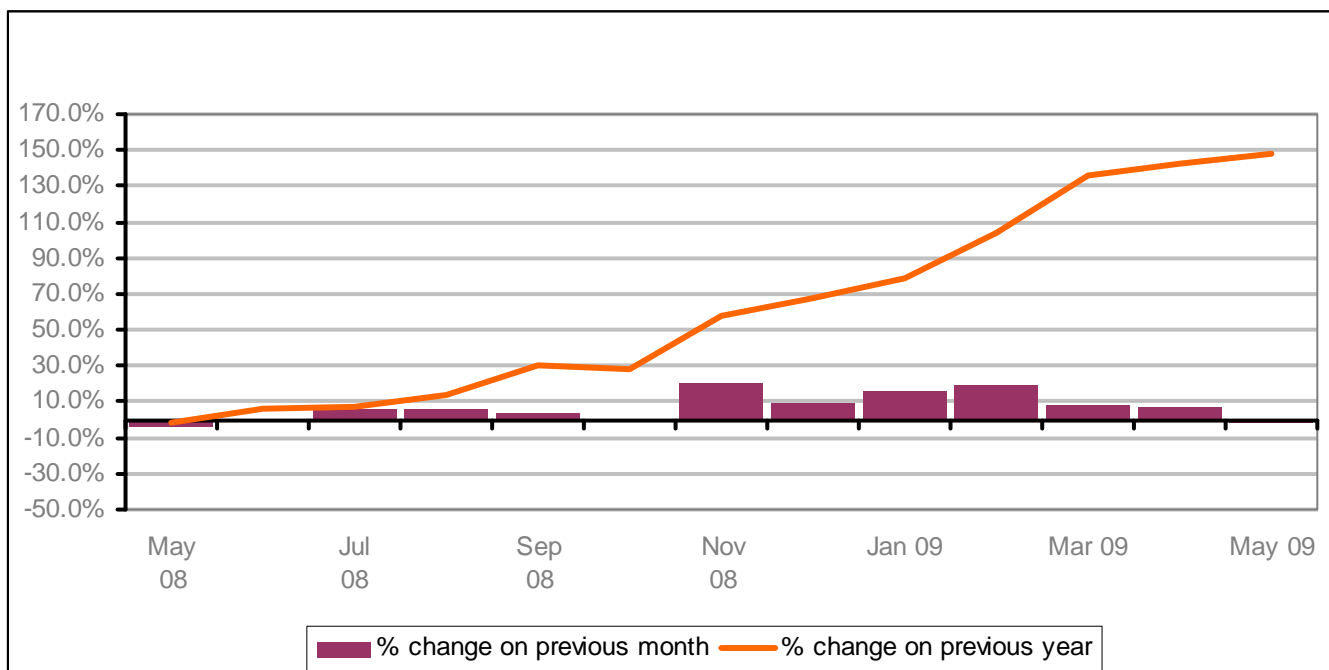


Figure 20 shows that claimant count decreased in May 2009 by 1.2% after continually increasing since June 2008. The rate in May 2009 figure was 148% higher than it was in May 2008.

PART 4: LOCAL AUTHORITY AND DISTRICT ANALYSIS

4.6 Tewkesbury District continued...

Figure 21: Claimant rates across Tewkesbury District wards - May 2009

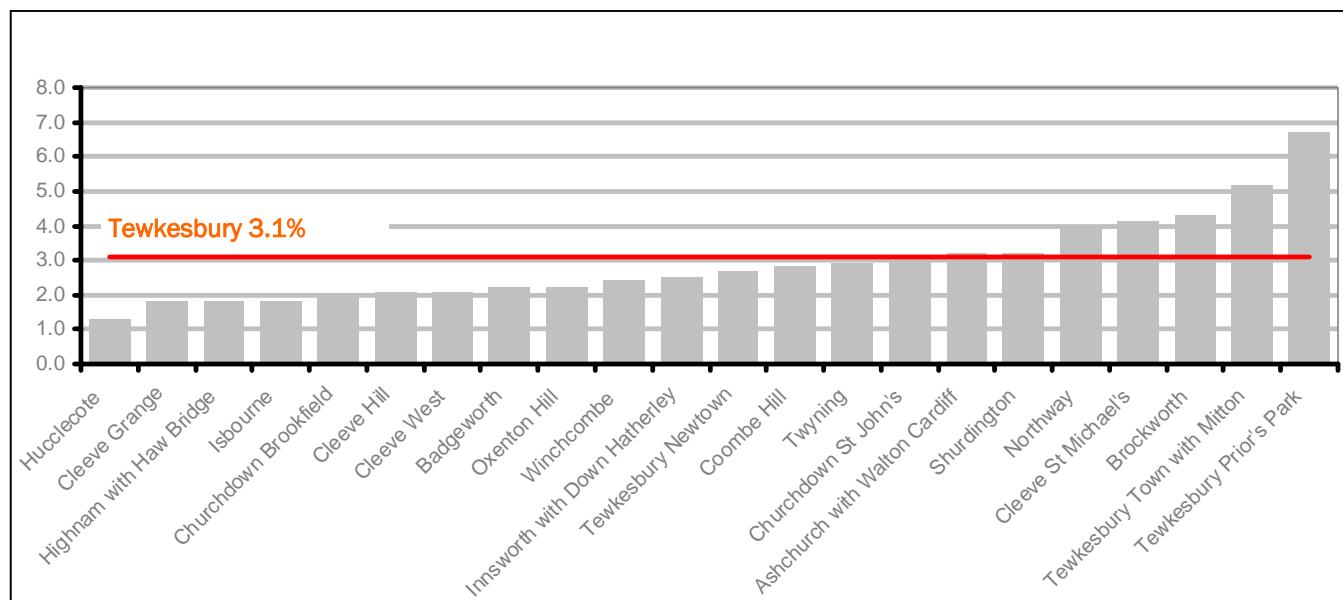
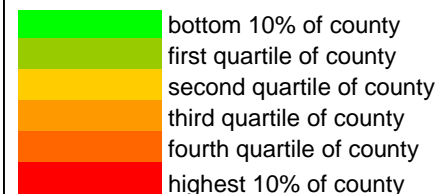


Figure 21 shows the claimant rates in Tewkesbury District wards. The red line represents the average claimant rate across the District of 3.1% and seven wards are above the average.

Table 10: Analysis of Claimant Count at Tewkesbury District level - May 2009

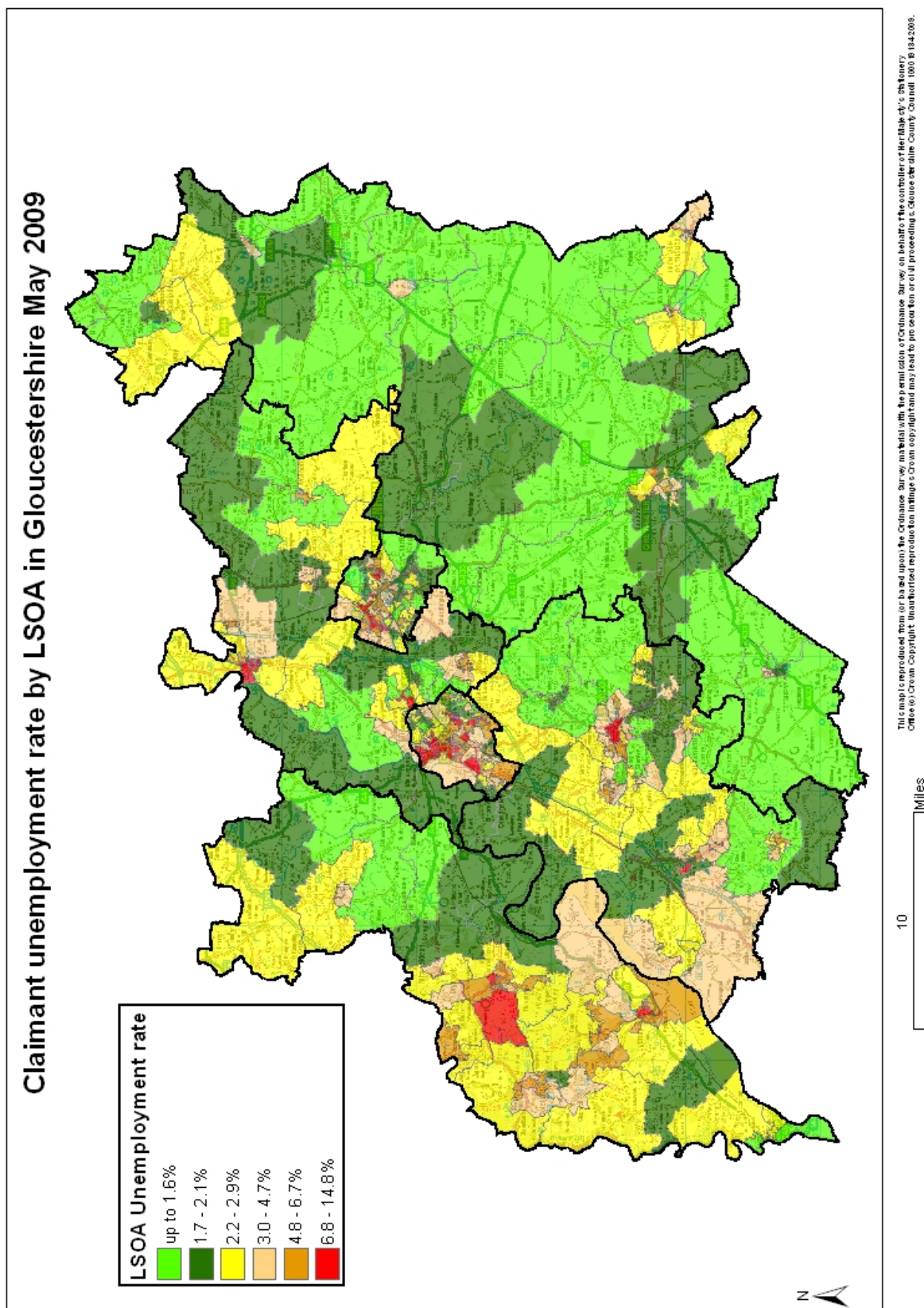
District	Ward	Rate	Rank*
Tewkesbury	Hucclecote	1.3	7
Tewkesbury	Cleeve Grange	1.8	21
Tewkesbury	Highnam with Haw Bridge	1.8	21
Tewkesbury	Isbourne	1.8	21
Tewkesbury	Churchdown Brookfield	2.0	30
Tewkesbury	Cleeve Hill	2.1	35
Tewkesbury	Cleeve West	2.1	35
Tewkesbury	Badgeworth	2.2	44
Tewkesbury	Oxenton Hill	2.2	44
Tewkesbury	Winchcombe	2.4	53
Tewkesbury	Innsworth with Down Hatherley	2.5	60
Tewkesbury	Tewkesbury Newtown	2.7	71
Tewkesbury	Coombe Hill	2.8	72
Tewkesbury	Twynning	2.9	75
Tewkesbury	Churchdown St John's	3.0	80
Tewkesbury	Ashchurch with Walton Cardiff	3.2	86
Tewkesbury	Shurdington	3.2	86
Tewkesbury	Northway	4.0	105
Tewkesbury	Cleeve St Michael's	4.1	110
Tewkesbury	Brockworth	4.3	113
Tewkesbury	Tewkesbury Town with Mitton	5.2	122
Tewkesbury	Tewkesbury Prior's Park	6.7	135



* 1 = "best" and 142 = "worst"

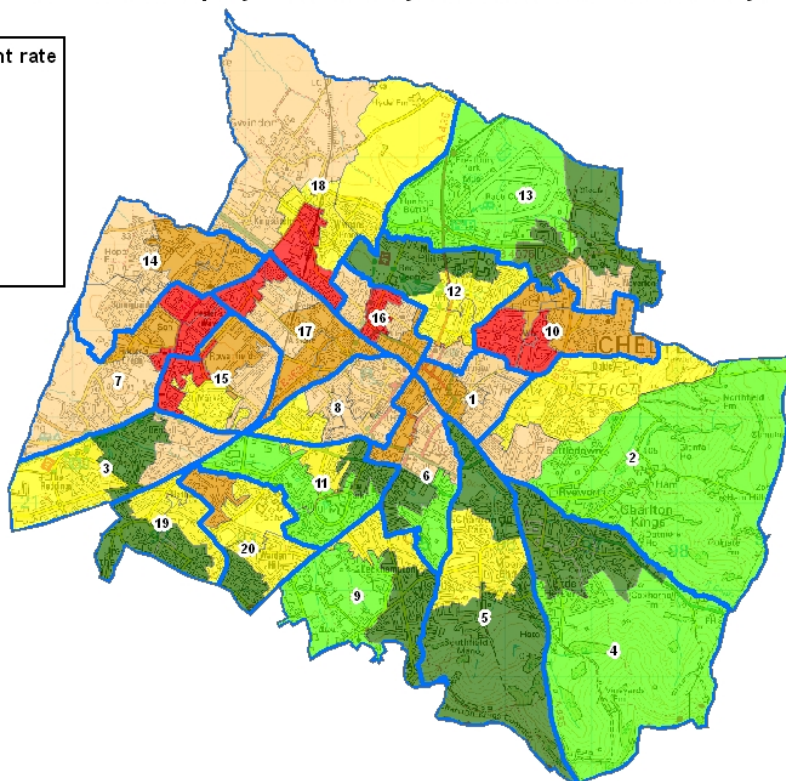
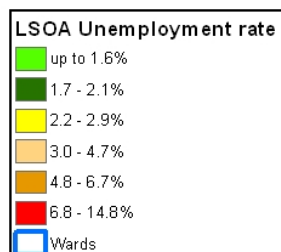
Table 10 shows overall claimant rates for Tewkesbury District wards and their position relative to all wards in Gloucestershire.

PART 5: MAP SHOWING DISTRIBUTION OF CLAIMANT RATE ACROSS GLOUCESTERSHIRE



PART 5: MAP SHOWING DISTRIBUTION OF CLAIMANT RATE ACROSS GLOUCESTERSHIRE

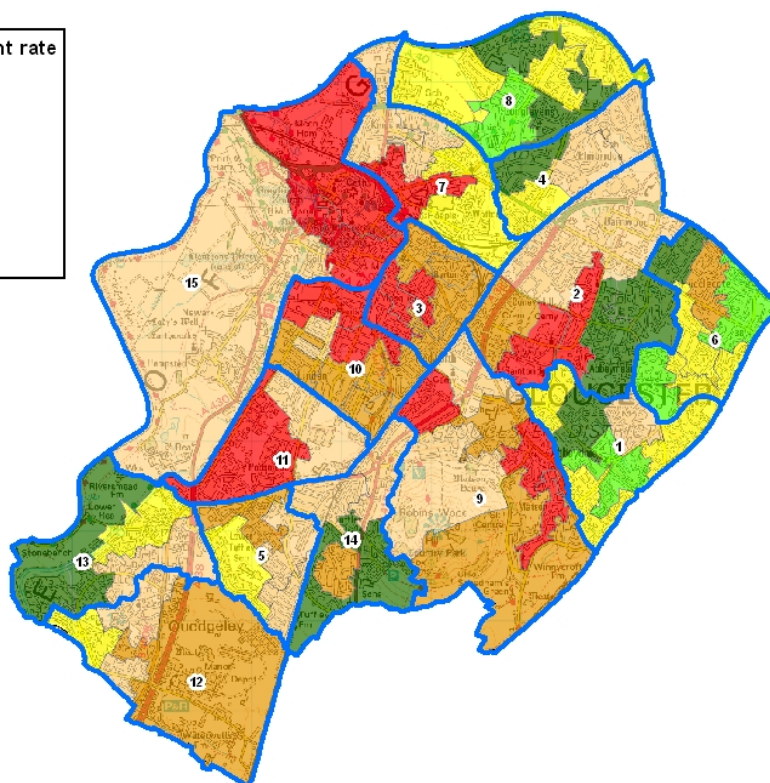
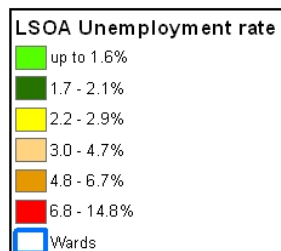
Claimant unemployment rate by LSOA in Cheltenham May 2009



ID	WARD
1	All Saints
2	Battledown
3	Benhall and The Reddings
4	Charlton Kings
5	Charlton Park
6	College
7	Hesters Way
8	Lansdown
9	Leckhampton
10	Oakley
11	Park
12	Pittville
13	Prestbury
14	Springbank
15	St Mark's
16	St Paul's
17	St Peter's
18	Swindon Village
19	Up Hatherley
20	Warden Hill



Claimant unemployment rate by LSOA in Gloucester May 2009



ID	WARD
1	Abbey
2	Barnwood
3	Barton and Tredworth
4	Elmbridge
5	Grange
6	Hucclecote
7	Kingsholm and Wotton
8	Longlevens
9	Matson and Robinswood
10	Moreland
11	Podsmead
12	Quedgeley Fieldcourt
13	Quedgeley Sevm Vale
14	Tuffley
15	Westgate



PART 6: YOUNG PEOPLE NOT IN EDUCATION, EMPLOYMENT OR TRAINING (NEET) IN GLOUCESTERSHIRE

Data provided by Prospects, the Connexions service in Gloucestershire on the situation of young people (16-18) in Gloucestershire who are not in education, employment or formal training.

Connexions Gloucestershire is required to report performance with the 16-18 age range against nationally defined criteria for counting the NEET group. The NEET group includes young people actively seeking education, employment or training as well as those young people who are either not yet ready or who are unable to access these opportunities because of their personal circumstances. The figures quoted below include young people in both of these categories.

SUMMARY

As at the end of May 2009 there were 626 young people aged 16-18 not in education, employment or training in Gloucestershire and this figure translates into an adjusted (*) 16-18 NEET population of 4.3%. This figure is a slight improvement on April's NEET rate of 4.4% and we are pleased to report that five out of the six districts have seen the numbers of young people in the NEET group reduce during May, with the sharpest decrease being in Tewkesbury (down from 4.2% in April). We are now hoping to see this positive performance continue into June and July and are working closely with partners to identify, target and support 'potential' NEETs from this year's school leavers.

Total NEET Group by District Area 31st May 2009

	Cheltenham	Cotswold	Forest	Gloucester	Stroud	Tewkesbury	Total
NEET Group	158	60	77	177	100	54	626(*)
% NEET of total 16-18 cohort	6.9%	2.6%	3.1	3.8%	3.7%	2.9%	4.3%(*)

County NEET action plan

The NEET partnership forum met in May to review and update the NEET action plan for Gloucestershire. A number of amendments have been made to the plan to reflect the current economic climate and the forum also approved the establishment of subgroups to drive forward the key actions contained in the plan. The revised action plan will shortly be on the GCC website.

NEET workshops

During September, as part of our campaign to support young people with the impact of the recession, there will be a series of district based workshops for key stakeholders and partners. The workshops will be an informal opportunity for professionals working with young people to meet and share ideas and approaches to help re-engage young people into positive outcomes. It is widely understood that both the 'partnership approach' to reducing NEET and the collective ownership of the causes of why young people become NEET are the key aspects of a successful NEET strategy. More details of these events will follow.

If you would like to receive any further information on Gloucestershire's NEET strategy then please contact Andrew.Webster@prospects.co.uk or telephone 01452 426900

(*) Adjustment includes a proportion of young people aged 16-18 whose outcomes are not-known to Connexions Gloucestershire