

Unemployment Bulletin

Issue 35 June 2011

Contents

Part 1: Summary

A summary of unemployment data at district, County, regional and national level

1

Part 2: County

Unemployment figures for the County compared to the South West and the rest of the UK

3

Part 3: Districts

A comparative break down of unemployment figures by district

4

Part 4: Wards

Further breakdown of unemployment figures by ward:

Cheltenham

6

Cotswolds

8

Forest of Dean

10

Gloucester

12

Stroud

14

Tewkesbury

16

Part 5: Map

Distribution of claimant rate across Gloucestershire

18

Part 6: Young People

Data about Young People Not in Education, Employment or Training (NEET)

20

INTRODUCTION

The Unemployment Bulletin provides a monthly update on unemployment data for Gloucestershire, the South West region and the United Kingdom. It is produced by the Economic section of the County Council Chief Executive's Support Unit Research Team. The data is sourced from the Office for National Statistics via Nomis (www.nomis.co.uk).

The claimant count measures the number of people claiming unemployment-related benefit (currently Job Seeker's allowance). The claimant rate is the number of claimants as a proportion of the working age population.

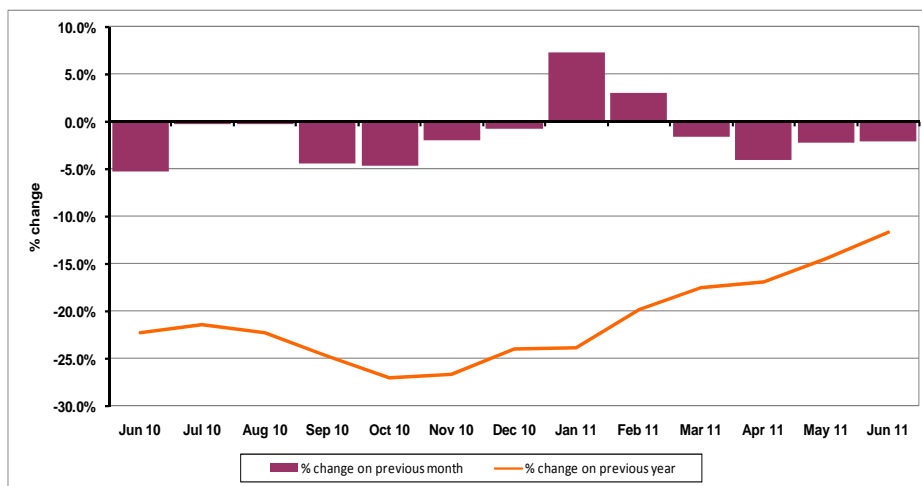
PART 1: SUMMARY

The claimant rate in Gloucestershire was 2.3 % in June 2011. This was a decrease of 0.1% on the May 2011 figure. The South West rate also declined by 0.1% last month to 2.4%, while the UK rate remained the same at 3.7%. Gloucestershire's rate was 0.1% lower than the South West average of 2.4%, and 1.4% lower than the UK average of 3.7%.

The claimant count in Gloucestershire in June 2011 decreased by 188 people. The amount of people claiming in June 2011 was 2.1% lower than the number in May 2011. This compares to a 2.0% decline in the South West and a 0.8% decrease for the UK.

The year on year claimant count in Gloucestershire has decreased. The count was 11.7% lower in June 2011 than at the same point in the previous year as shown in the graph below.

Gloucestershire claimants - Month on Month and Year on Year change: June 2010 to June 2011



Source: ONS Crown Copyright Reserved

Produced by:

The Research Team (Economics)
Chief Executive Support Unit
Gloucestershire County Council
July 2011

DISTRICTS AT A GLANCE

At a glance unemployment information grouped by district. Includes:

Claim count: Total number of people claiming Job Seekers Allowance in June 2011

Compared to last month: How much larger/smaller June's claim count is compared to May, expressed as a %

Claimant rate: The % of working population claiming Job Seekers Allowance in June 2011

Highest claiming ward: The ward with the highest claim count in that district and the rate

CHELTEMHAM BOROUGH

Claim count:	1,974
Compared to last month:	-0.6%
Claimant rate:	2.7%
Highest claiming wards	Hesters Way(5.3%) & Oakley (5.3%)

GLOUCESTER CITY

Claim count:	2,618
Compared to last month:	-3.0%
Claimant rate:	3.4%
Highest claiming ward	Westgate (7.1%)

COTSWOLD DISTRICT

Claim count:	617
Compared to last month:	-6.2%
Claimant rate:	1.2%
Highest claiming ward	Cirencester Watermoor (2.8%)

STROUD DISTRICT

Claim count:	1,244
Compared to last month:	-3.0%
Claimant rate:	1.8%
Highest claiming ward	Central (4.6%)

FOREST OF DEAN

Claim count:	1,213
Compared to last month:	-1.5%
Claimant rate:	2.3%
Highest claiming ward	Cinderford East (4.6%)

TEWKESBURY BOROUGH

Claim count:	987
Compared to last month:	+0.1%
Claimant rate:	2.0%
Highest claiming ward	Tewkesbury Prior's Park (4.6%)

YOUNG PEOPLE NOT IN EDUCATION, EMPLOYMENT OR TRAINING (NEET)

As at the end of June 2011 there were 582 young people aged 16-18 not in education, employment or training in Gloucestershire and this figure translates into an adjusted (*) 16-18 NEET population of 4.1%.

PART 2: UK, SW AND GLOUCESTERSHIRE INDICATORS

The unemployment situation in Gloucestershire compared to the South West and the UK.

Claimant Rate

Figure 1: Claimant Rate for Gloucestershire, the South West and UK over the past year

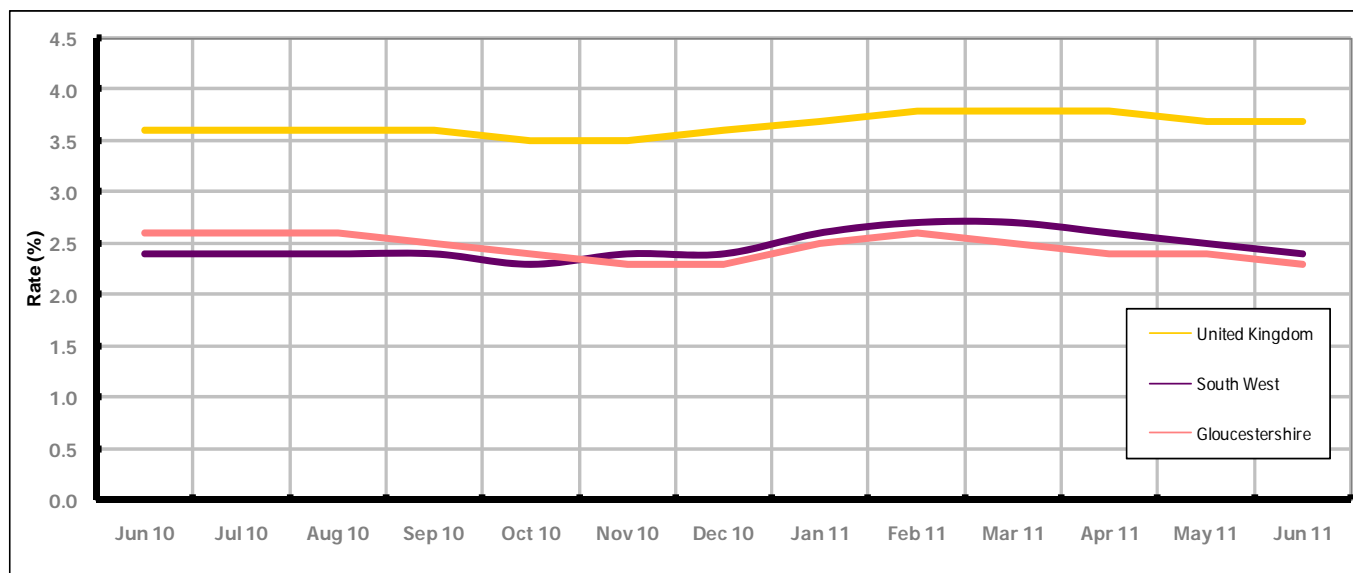


Figure 1 shows the claimant rate for Gloucestershire at 2.3% in June 2011. The rate remained higher than the South West average, until November 2010, when it fell below the South West rate, it has been persistently lower by approximately 1.4% against the UK average during the same period. The June 2011 rate represented a 0.1% decrease on May 2011. .

Claimant Count

Table 1: Analysis of UK, South West and Gloucestershire Claimant Counts

Area	Claimant Count in June 2011	% change on May 2011	Average % change over the last six months	Consecutive months decreasing
UK	1,493,077	-0.8%	-0.1%	3
South West	80,096	-2.0%	-1.1%	3
Gloucestershire	8,653	-2.1%	-1.2%	3

Table 1 shows that in June 2011, the number of claimants in Gloucestershire was 2.1% lower than the number in May 2011.

The average change in claimants in Gloucestershire for the six months to June 2011 was -1.2%. This is 1.1% lower than the UK average and 0.1% lower than the South West average.

PART 3: LOCAL AUTHORITY DISTRICT ANALYSIS

Claimant Rate and Claimant Count

Figure 2: Claimant Rate (%) across Gloucestershire - June 2011

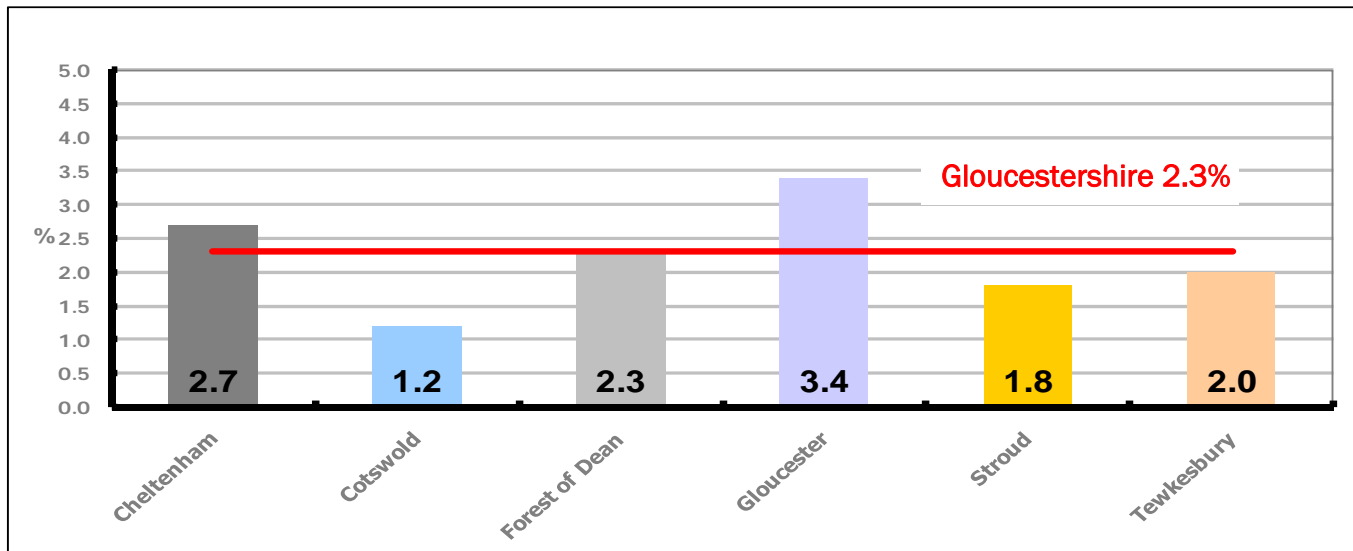


Figure 2 shows the claimant rate for June 2011 in Gloucestershire. Between May 2011 and June 2011 Cheltenham and Tewkesbury districts remained the same, while the remaining districts underwent a decline.

Figure 3: Total claimants over the past year across Gloucestershire Districts

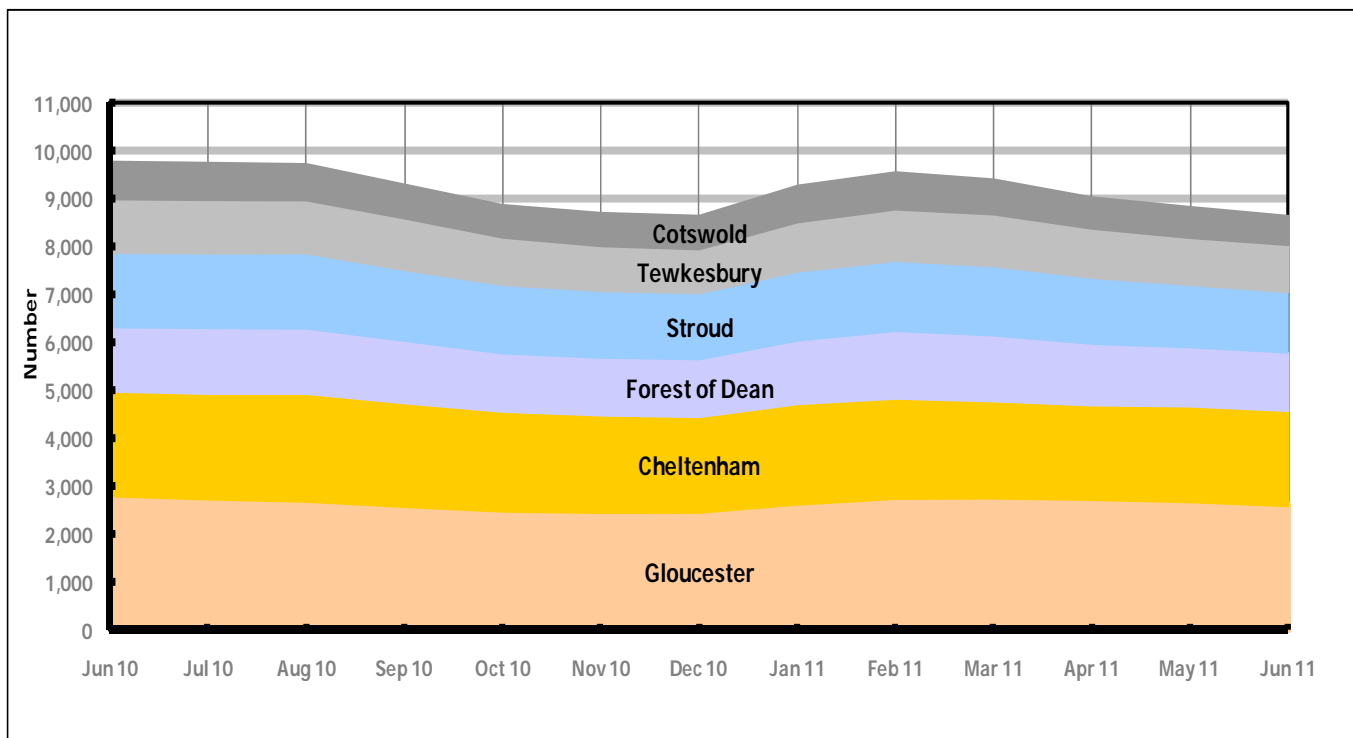


Figure 3 shows the overall claimant count by district for Gloucestershire over the past year. It shows the number of claimants have been declining since June 2010, with the exception of January and February 2011 when they increased.

Table 2: Analysis of Gloucestershire and District Claimant Counts

Total	Jun 11 Number	Jun 11 Rate	May 11 Number	May 11 Rate	Monthly change	% monthly change	Monthly change of rate
Gloucestershire	8,653	2.3	8,841	2.4	-188	-2.1%	-0.1
Cheltenham	1,974	2.7	1,985	2.7	-11	-0.6%	0.0
Cotswold	617	1.2	658	1.3	-41	-6.2%	-0.1
Forest of Dean	1,213	2.3	1,231	2.4	-18	-1.5%	-0.1
Gloucester	2,618	3.4	2,699	3.5	-81	-3.0%	-0.1
Stroud	1,244	1.8	1,282	1.9	-38	-3.0%	-0.1
Tewkesbury	987	2.0	986	2.0	1	0.1%	0.0

Table 2 shows the change in the claimant count in June 2011 compared to May 2011. Tewkesbury experienced a slight increase in the number of claimants, while the remaining districts underwent a decline.

Table 3: Analysis of Male Gloucestershire and District Claimant Counts

Male	Jun 11 Number	Jun 11 Rate	May 11 Number	May 11 Rate	Monthly change	% monthly change	Monthly change of rate
Gloucestershire	5,830	3.1	5,946	3.2	-116	-2.0%	-0.1
Cheltenham	1,349	3.6	1,356	3.6	-7	-0.5%	0.0
Cotswold	383	1.5	412	1.6	-29	-7.0%	-0.1
Forest of Dean	806	3.1	818	3.2	-12	-1.5%	-0.1
Gloucester	1,797	4.7	1,833	4.8	-36	-2.0%	-0.1
Stroud	834	2.4	864	2.5	-30	-3.5%	-0.1
Tewkesbury	661	2.7	663	2.7	-2	-0.3%	0.0

Table 3 shows the change in the male claimant count in June 2011 compared to May 2011. All districts experienced a decrease in the number of male claimants.

Table 4: Analysis of Female Gloucestershire and District Claimant Counts

Female	Jun 11 Number	Jun 11 Rate	May 11 Number	May 11 Rate	Monthly change	% monthly change	Monthly change of rate
Gloucestershire	2,823	1.5	2,895	1.6	-72	-2.5%	-0.1
Cheltenham	625	1.7	629	1.7	-4	-0.6%	0.0
Cotswold	234	0.9	246	1.0	-12	-4.9%	-0.1
Forest of Dean	407	1.6	413	1.6	-6	-1.5%	0.0
Gloucester	821	2.2	866	2.3	-45	-5.2%	-0.1
Stroud	410	1.2	418	1.2	-8	-1.9%	0.0
Tewkesbury	326	1.3	323	1.3	3	0.9%	0.0

Table 4 shows the change in the female claimant count in June 2011 compared to May 2011. Tewkesbury experienced a slight increase in the number of female claimants, while the remaining districts underwent a decline.

PART 4: LOCAL AUTHORITY DISTRICT AND WARD ANALYSIS

This section covers the six districts and a comparison of their constituent wards.

4.1 Cheltenham Borough

Claimant Rate and Claimant Count

Figure 4: Cheltenham Borough claimant rate over the last year

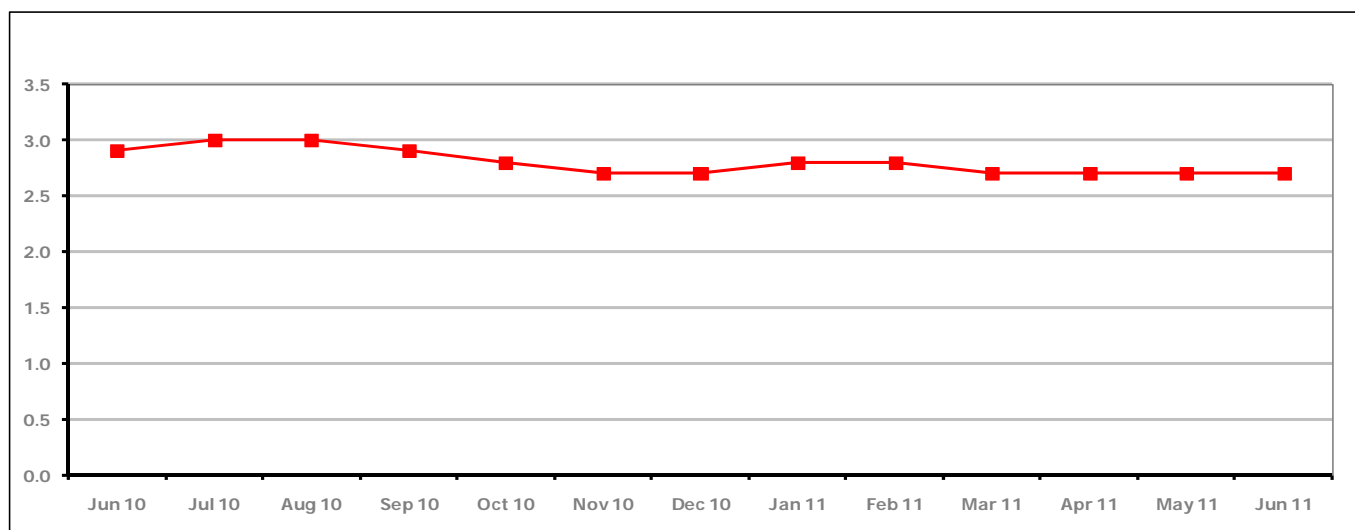


Figure 4 shows the claimant rate in Cheltenham remained the same as last month at 2.7%.

Figure 5: Cheltenham Borough claimants - Month on Month and Year on Year change

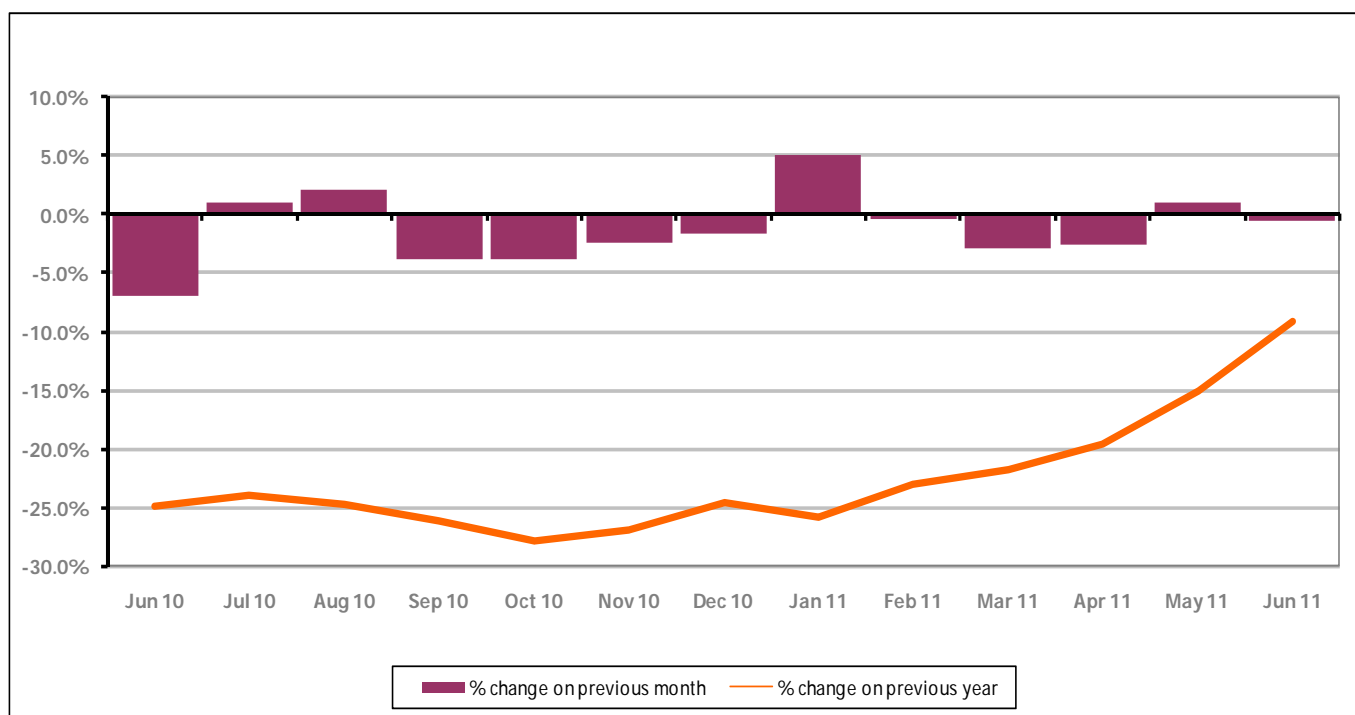


Figure 5 shows the claimant count decreased by 0.6% since last month. The change on the previous year has increased in June 2011 compared to May 2011 to -9.1%.

PART 4: LOCAL AUTHORITY DISTRICT AND WARD ANALYSIS

4.1 Cheltenham Borough continued...

Figure 6: Claimant rates across Cheltenham Borough wards - June 2011

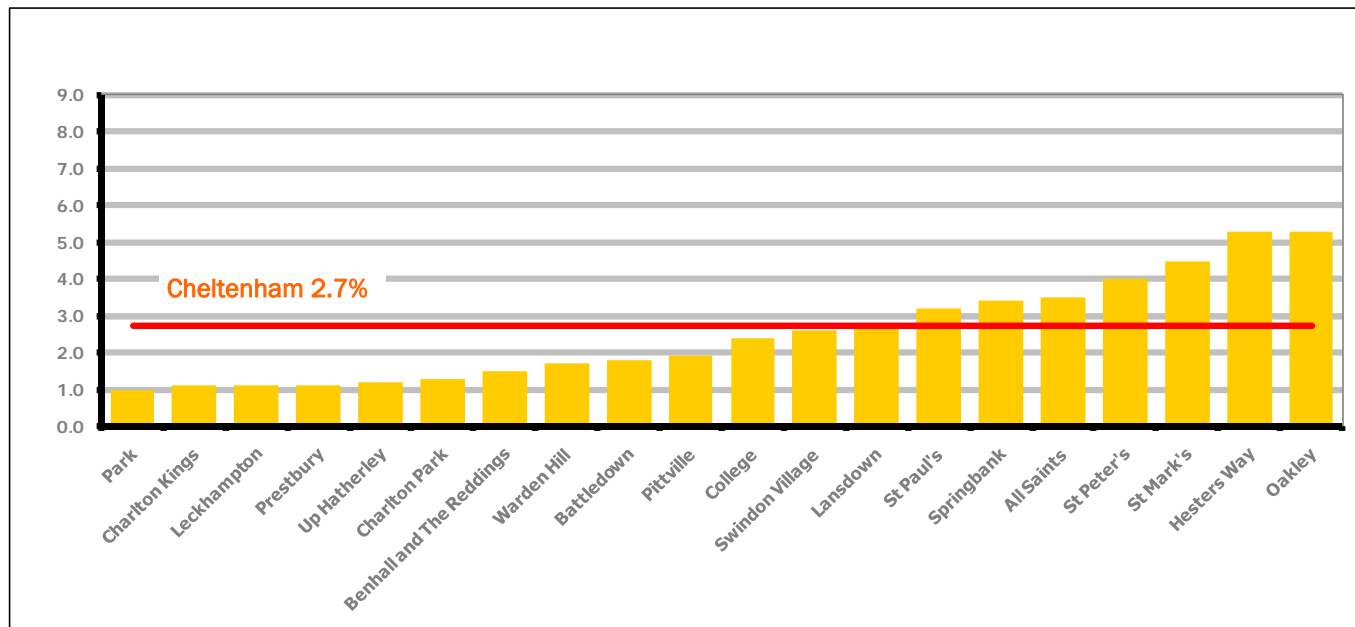
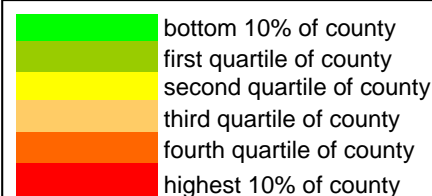


Figure 6 shows the claimant rates for Cheltenham Borough wards. The red line represents the average claimant rate across the Borough of 2.7%. Seven wards lie above the average.

Table 5: Analysis of Claimant Count at Cheltenham Borough ward level - June 2011

District	Ward	Rate	Rank*
Cheltenham	Park	1.0	22
Cheltenham	Charlton Kings	1.1	32
Cheltenham	Leckhampton	1.1	32
Cheltenham	Prestbury	1.1	32
Cheltenham	Up Hatherley	1.2	47
Cheltenham	Charlton Park	1.3	54
Cheltenham	Benhall and The Reddings	1.5	68
Cheltenham	Warden Hill	1.7	76
Cheltenham	Battledown	1.8	81
Cheltenham	Pittville	1.9	86
Cheltenham	College	2.4	99
Cheltenham	Swindon Village	2.6	106
Cheltenham	Lansdown	2.7	111
Cheltenham	St Paul's	3.2	119
Cheltenham	Springbank	3.4	121
Cheltenham	All Saints	3.5	123
Cheltenham	St Peter's	4.0	128
Cheltenham	St Mark's	4.5	132
Cheltenham	Hesters Way	5.3	137
Cheltenham	Oakley	5.3	137



* 1 = "best" and 142 = "worst"

Table 5 shows overall claimant rates for Cheltenham Borough wards and their position relative to all wards in Gloucestershire.

PART 4: LOCAL AUTHORITY DISTRICT AND WARD ANALYSIS

4.2 Cotswold District

Claimant Rate and Claimant Count

Figure 7: Cotswold District claimant rate over the last year

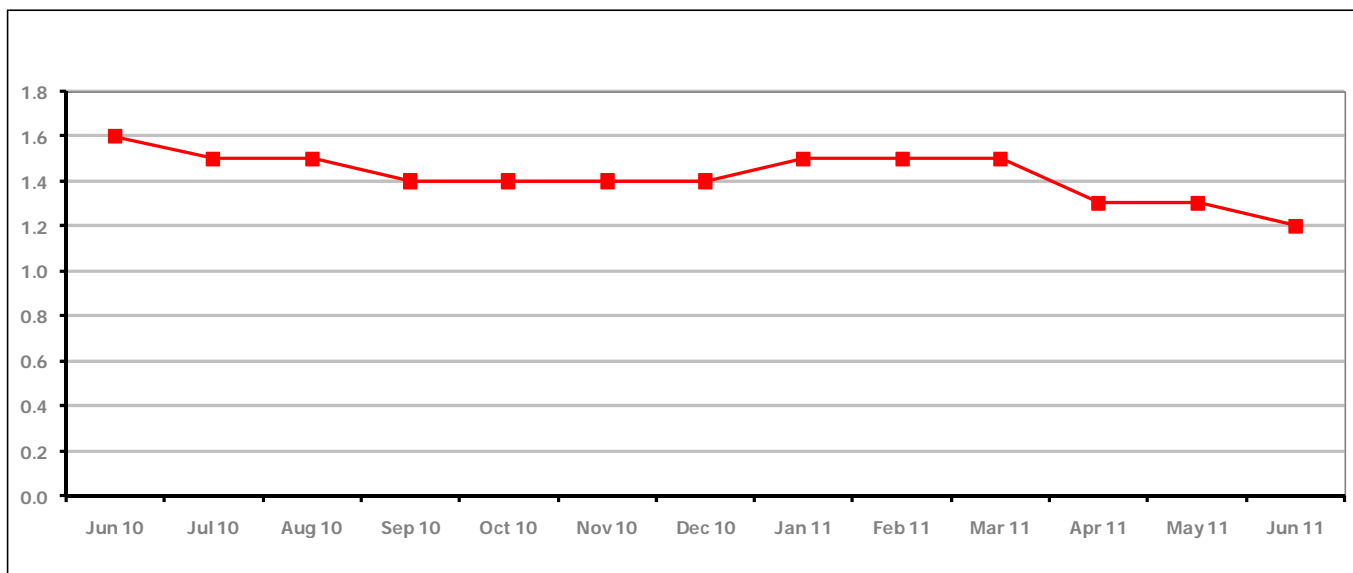


Figure 7 shows the claimant rate in Cotswold District decreased in June 2011 to 1.2%.

Figure 8: Cotswold District claimants - Month on Month and Year on Year change

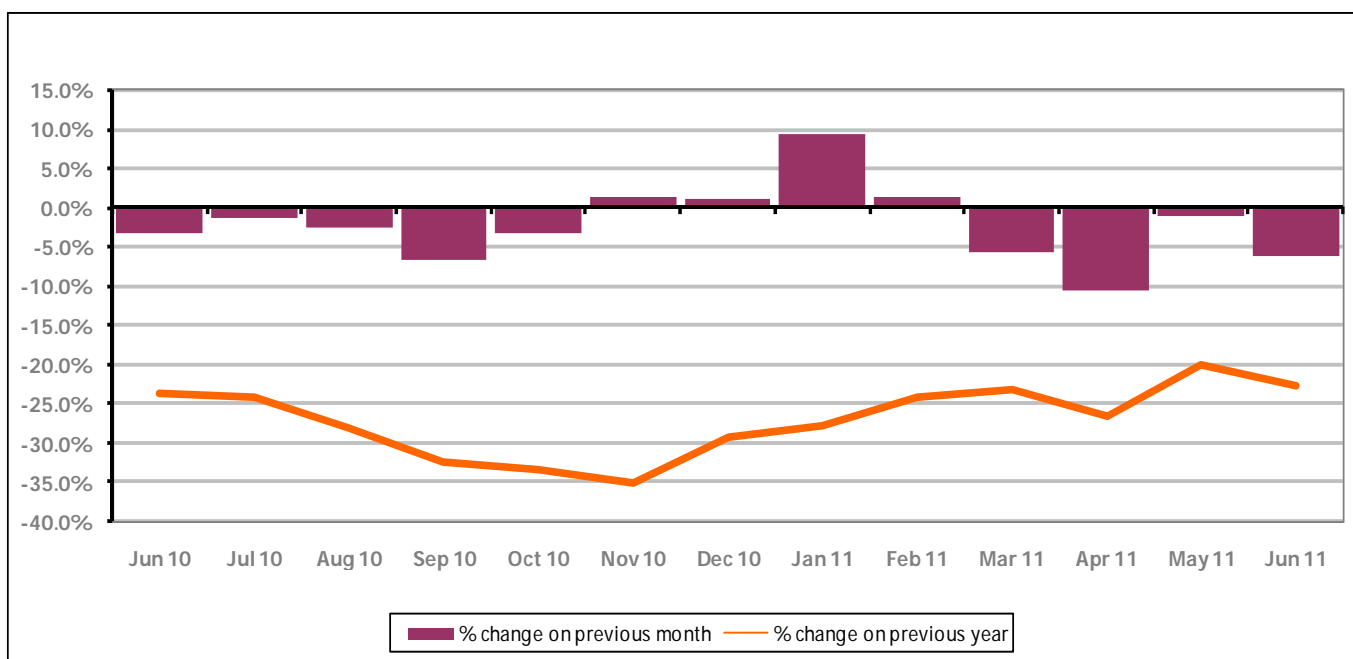


Figure 8 shows the claimant count decreased by -6.2% since May 2011. The change on the previous year has decreased from May 2011 to June 2011 to -22.7%.

PART 4: LOCAL AUTHORITY DISTRICT AND WARD ANALYSIS

4.2 Cotswold District continued...

Figure 9: Claimant rates across Cotswold District wards - June 2011

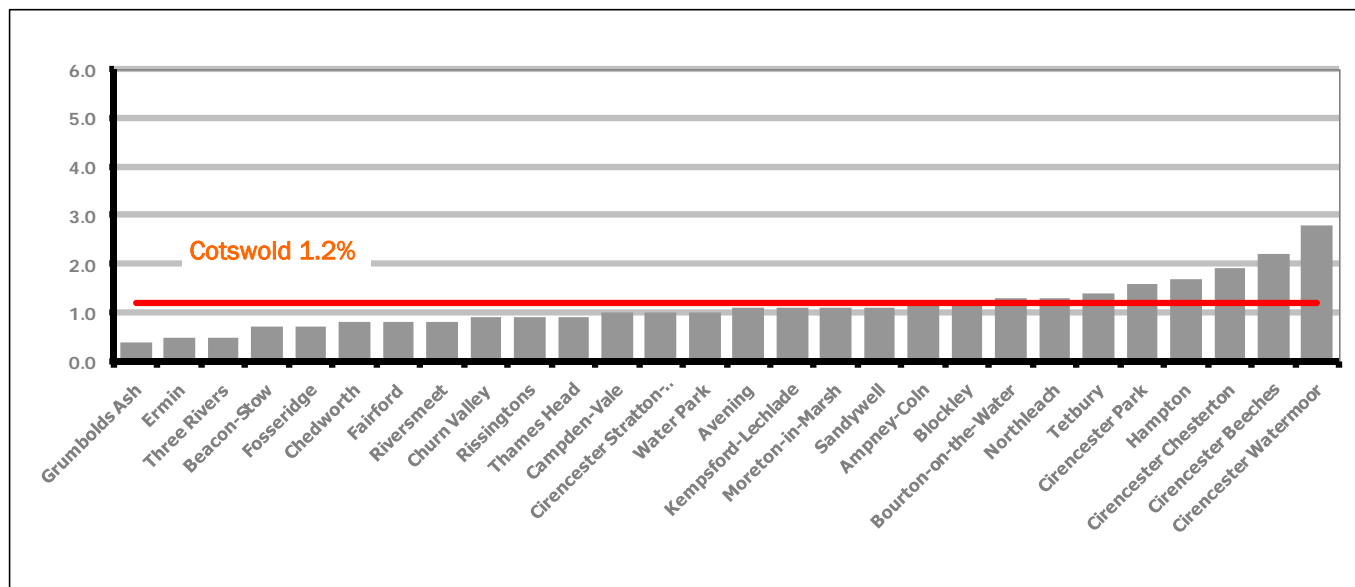


Figure 9 shows the claimant rates for Cotswold District wards. The red line represents the average claimant rate across the District of 1.2%. Eight wards lie above the average.

Table 6: Analysis of Claimant Count at Cotswold District ward level - June 2011

District	Ward	Rate	Rank*
Cotswolds	Grumbolds Ash	0.4	1
Cotswolds	Ermin	0.5	4
Cotswolds	Three Rivers	0.5	4
Cotswolds	Beacon-Stow	0.7	9
Cotswolds	Fosseridge	0.7	9
Cotswolds	Chedworth	0.8	14
Cotswolds	Fairford	0.8	14
Cotswolds	Riversmeet	0.8	14
Cotswolds	Churn Valley	0.9	17
Cotswolds	Rissingtons	0.9	17
Cotswolds	Thames Head	0.9	17
Cotswolds	Campden-Vale	1.0	22
Cotswolds	Cirencester Stratton-Whiteway	1.0	22
Cotswolds	Water Park	1.0	22
Cotswolds	Avening	1.1	32
Cotswolds	Kempsford-Lechlade	1.1	32
Cotswolds	Moreton-in-Marsh	1.1	32
Cotswolds	Sandywell	1.1	32
Cotswolds	Ampney-Coln	1.2	47
Cotswolds	Blockley	1.2	47
Cotswolds	Bourton-on-the-Water	1.3	54
Cotswolds	Northleach	1.3	54
Cotswolds	Tetbury	1.4	61
Cotswolds	Cirencester Park	1.6	71
Cotswolds	Hampton	1.7	76
Cotswolds	Cirencester Chesterton	1.9	86
Cotswolds	Cirencester Beeches	2.2	95
Cotswolds	Cirencester Watermoor	2.8	115

bottom 10% of county

first quartile of county

second quartile of county

third quartile of county

fourth quartile of county

highest 10% of county

* 1 = "best" and 142 = "worst"

Table 6 shows overall claimant rates for Cotswold District wards and their position relative to all wards in Gloucestershire.

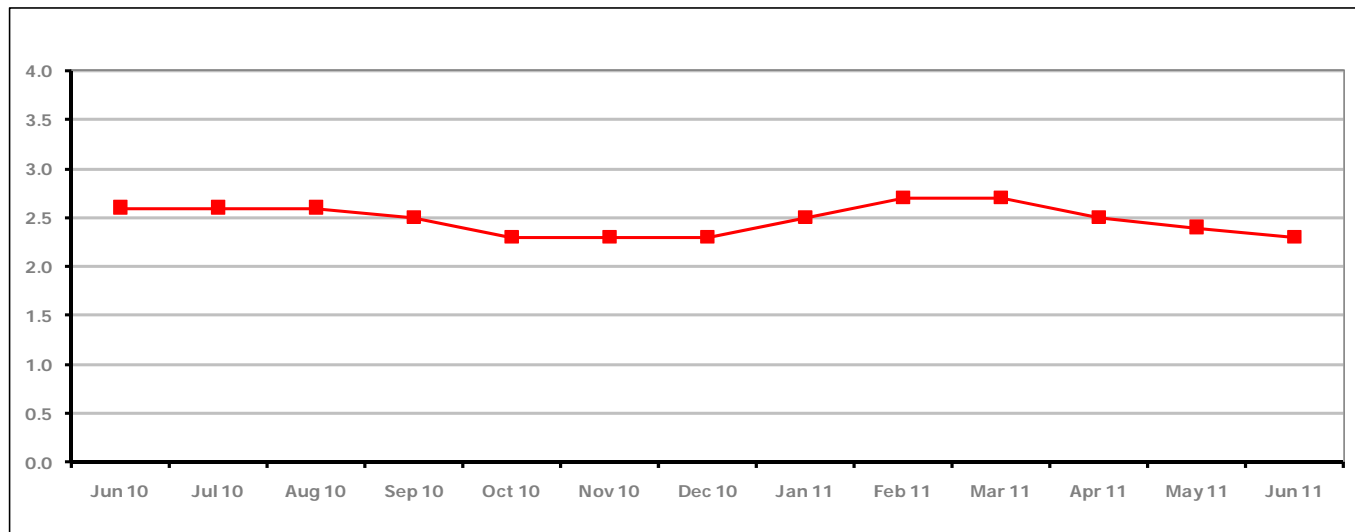
PART 4: LOCAL AUTHORITY DISTRICT AND WARD ANALYSIS**4.3 Forest of Dean District****Claimant Rate and Claimant Count***Figure 10: Forest of Dean District claimant rate over the last year*

Figure 10 shows the claimant rate in the Forest of Dean decreased in June 2011 to 2.3%.

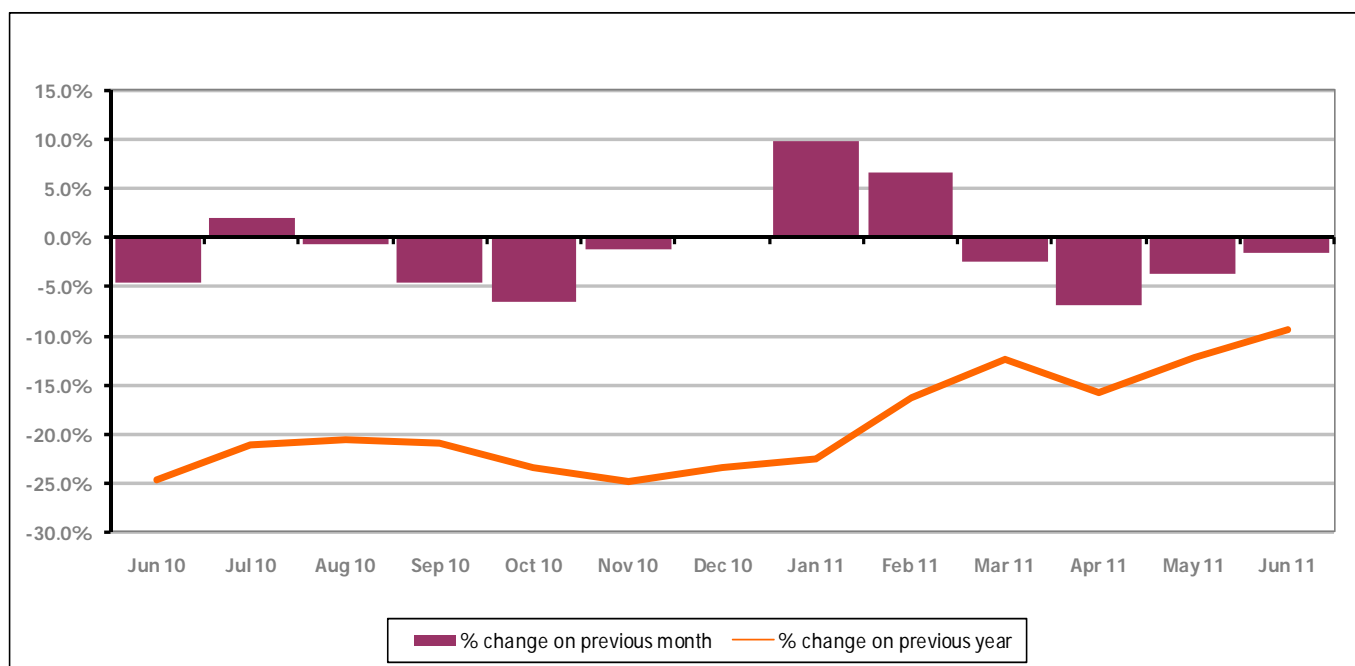
Figure 11: Forest of Dean District claimants - Month on Month and Year on Year change

Figure 11 shows the claimant count decreased by -1.5% since May 2011. The change on the previous year increased between May and June 2011 to -9.4%.

PART 4: LOCAL AUTHORITY DISTRICT AND WARD ANALYSIS

4.3 Forest of Dean District continued...

Figure 12: Claimant rates across Forest of Dean District wards - June 2011

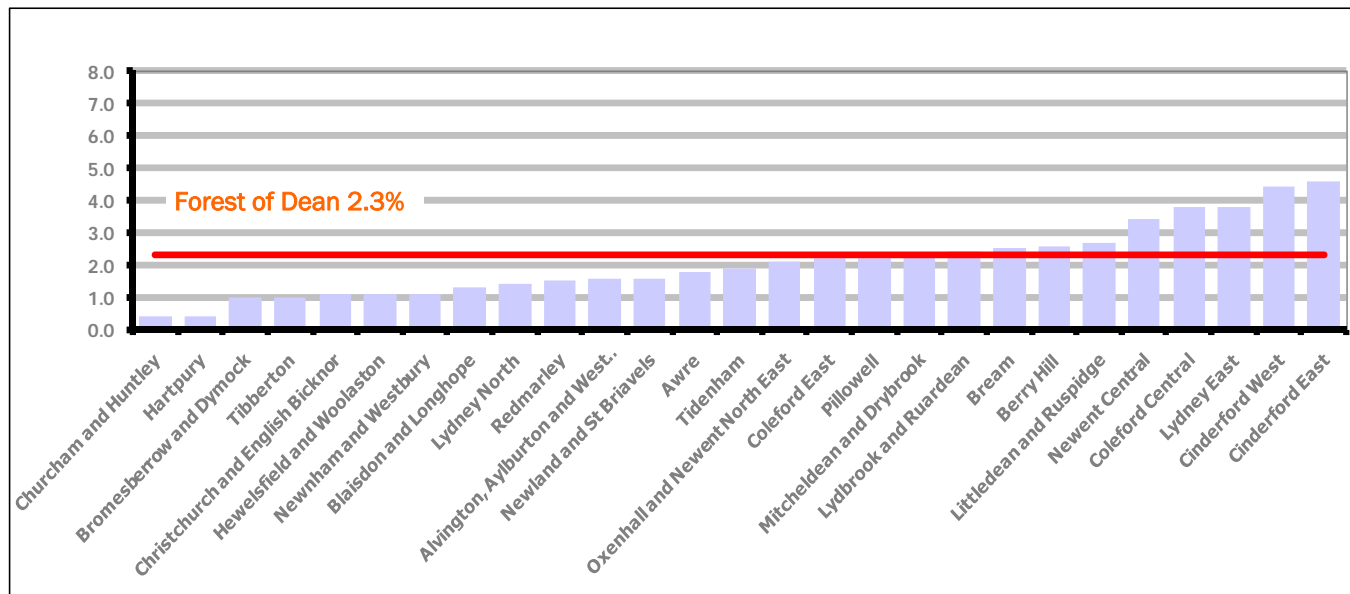
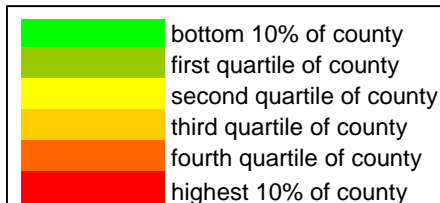


Figure 12 shows the claimant rates for Forest of Dean District wards. The red line represents the average claimant rate across the District of 2.3 %. Nine wards lie above the average.

Table 7: Analysis of Claimant Count at Forest of Dean District ward level - June 2011

District	Ward	Rate	Rank*
Forest	Churcham and Huntley	0.4	1
Forest	Hartpury	0.4	1
Forest	Bromesberrow and Dymock	1.0	22
Forest	Tibberton	1.0	22
Forest	Christchurch and English Bicknor	1.1	32
Forest	Hewelsfield and Woolaston	1.1	32
Forest	Newnham and Westbury	1.1	32
Forest	Blaisdon and Longhope	1.3	54
Forest	Lydney North	1.4	61
Forest	Redmarley	1.5	68
Forest	Alvington, Aylburton and West Lydney	1.6	71
Forest	Newland and St Briavels	1.6	71
Forest	Awre	1.8	81
Forest	Tidenham	1.9	86
Forest	Oxenhall and Newent North East	2.1	93
Forest	Coleford East	2.2	95
Forest	Pillowell	2.2	95
Forest	Mitcheldean and Drybrook	2.3	98
Forest	Lydbrook and Ruardean	2.4	99
Forest	Bream	2.5	102
Forest	Berry Hill	2.6	106
Forest	Littledean and Ruspidge	2.7	111
Forest	Newent Central	3.4	121
Forest	Coleford Central	3.8	126
Forest	Lydney East	3.8	126
Forest	Cinderford West	4.4	130
Forest	Cinderford East	4.6	133



* 1 = "best" and 142 = "worst"

Table 7 shows overall claimant rates for the Forest of Dean District wards and their position relative to all wards in Gloucestershire.

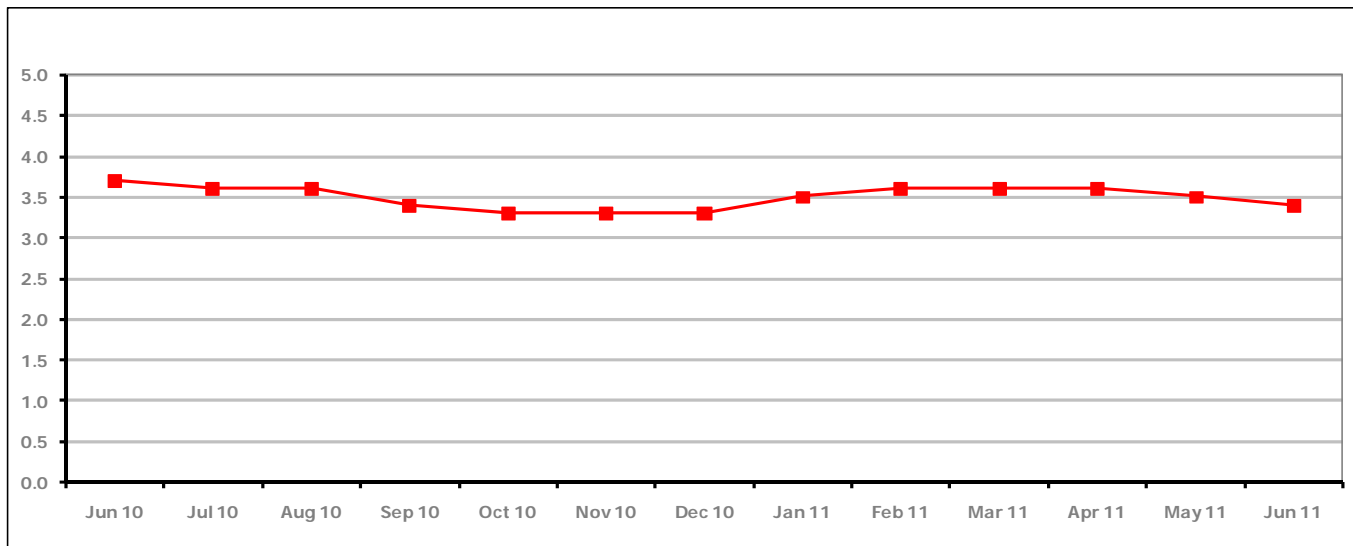
PART 4: LOCAL AUTHORITY DISTRICT AND WARD ANALYSIS**4.4 Gloucester City****Claimant Rate and Claimant Count***Figure 13: Gloucester City claimant rate over the last year*

Figure 13 shows the claimant rate for Gloucester City decreased in June 2011 to 3.4%.

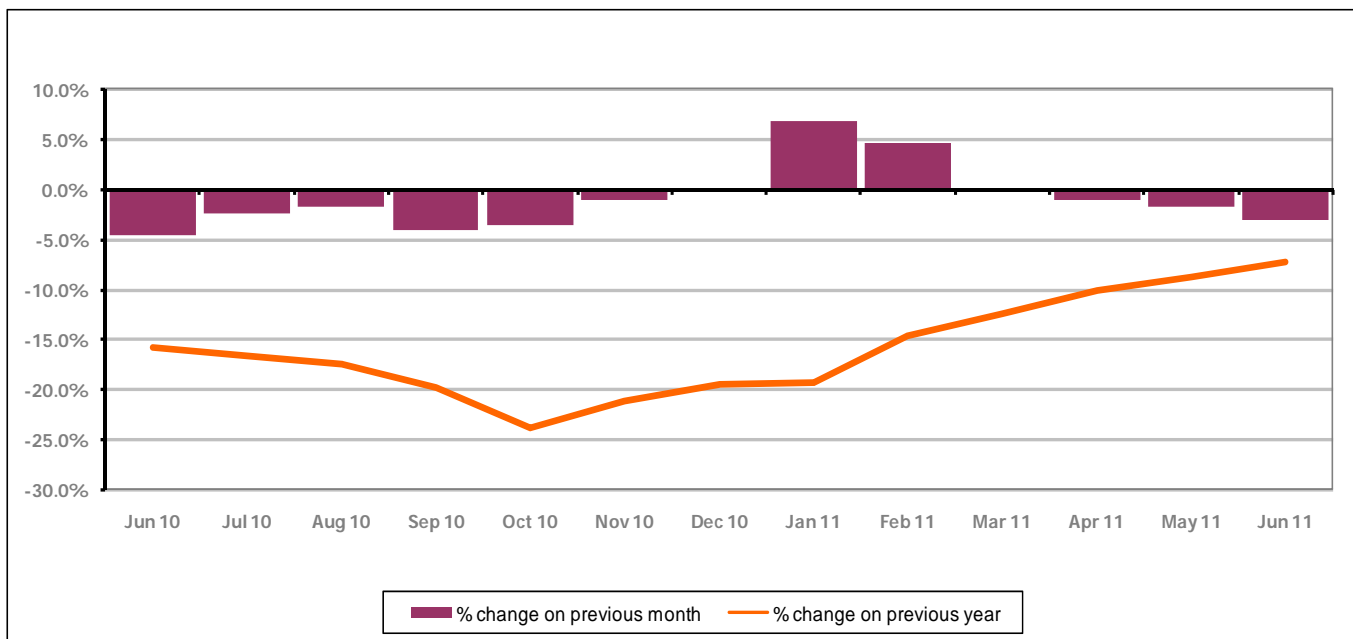
Figure 14: Gloucester City claimants - Month on Month and Year on Year change

Figure 14 shows the monthly claimant count decreased by -3.0% since May 2011. The change on the previous year has increased between May 2011 and June 2011 to -7.3%.

PART 4: LOCAL AUTHORITY DISTRICT AND WARD ANALYSIS

4.4 Gloucester City continued...

Figure 15: Claimant rates across Gloucester City wards - June 2011

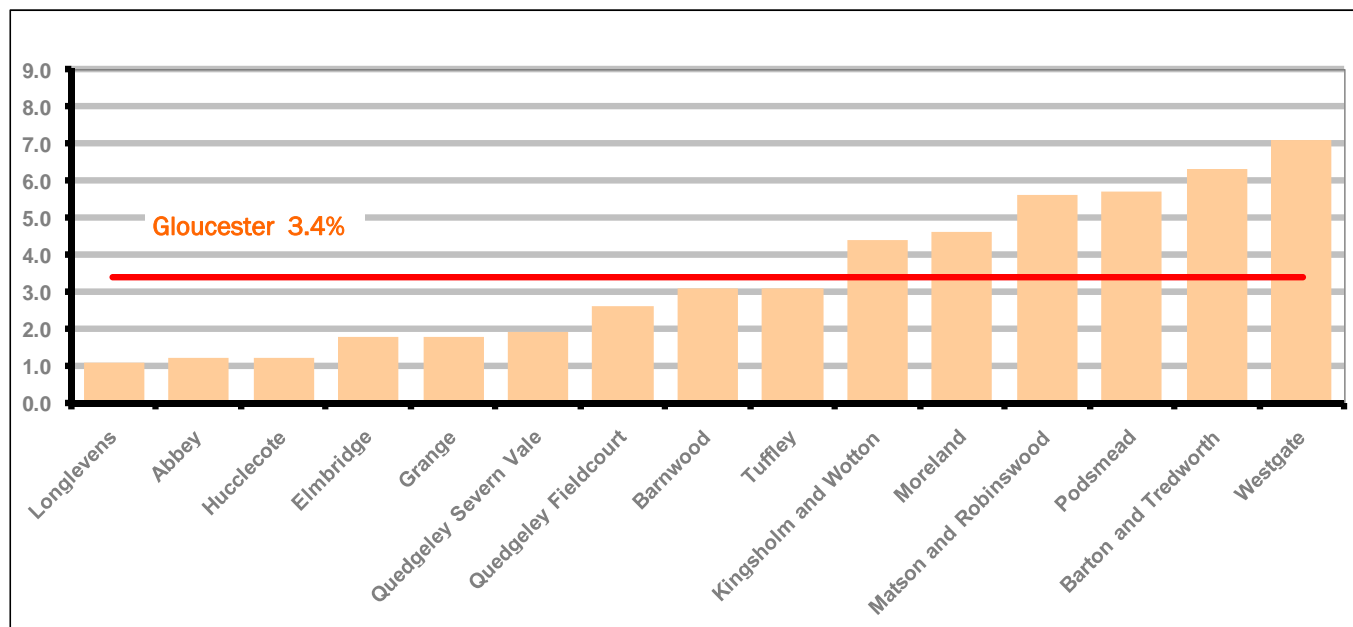
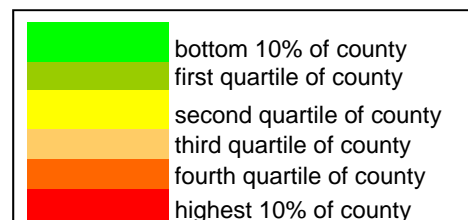


Figure 15 shows the claimant rates for Gloucester City district wards. The red line represents the average claimant rate across the City of 3.4%. Six wards lie above the average.

Table 8: Analysis of Claimant Count at Gloucester City ward level - June 2011

District	Ward	Rate	Rank*
Gloucester	Longlevens	1.1	32
Gloucester	Abbey	1.2	47
Gloucester	Hucclecote	1.2	47
Gloucester	Elmbridge	1.8	81
Gloucester	Grange	1.8	81
Gloucester	Quedgeley Severn Vale	1.9	86
Gloucester	Quedgeley Fieldcourt	2.6	106
Gloucester	Barnwood	3.1	116
Gloucester	Tuffley	3.1	116
Gloucester	Kingsholm and Wotton	4.4	130
Gloucester	Moreland	4.6	133
Gloucester	Matson and Robinswood	5.6	139
Gloucester	Podsmead	5.7	140
Gloucester	Barton and Tredworth	6.3	141
Gloucester	Westgate	7.1	142



* 1 = "best" and 142 = "worst"

Table 8 shows overall claimant rates for Gloucester City wards and their position relative to all wards in Gloucestershire.

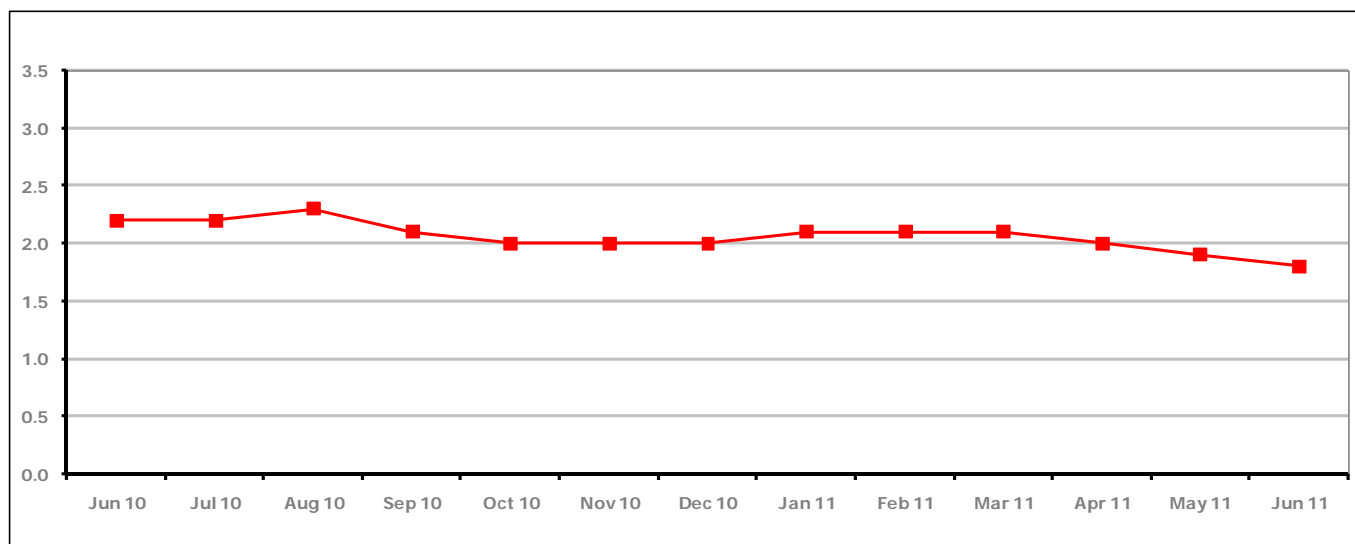
PART 4: LOCAL AUTHORITY DISTRICT AND WARD ANALYSIS**4.5 Stroud District****Claimant Rate and Claimant Count***Figure 16: Stroud District claimant rate over the last year*

Figure 16 shows the claimant rate for Stroud District declined in June 2011 to 1.8%.

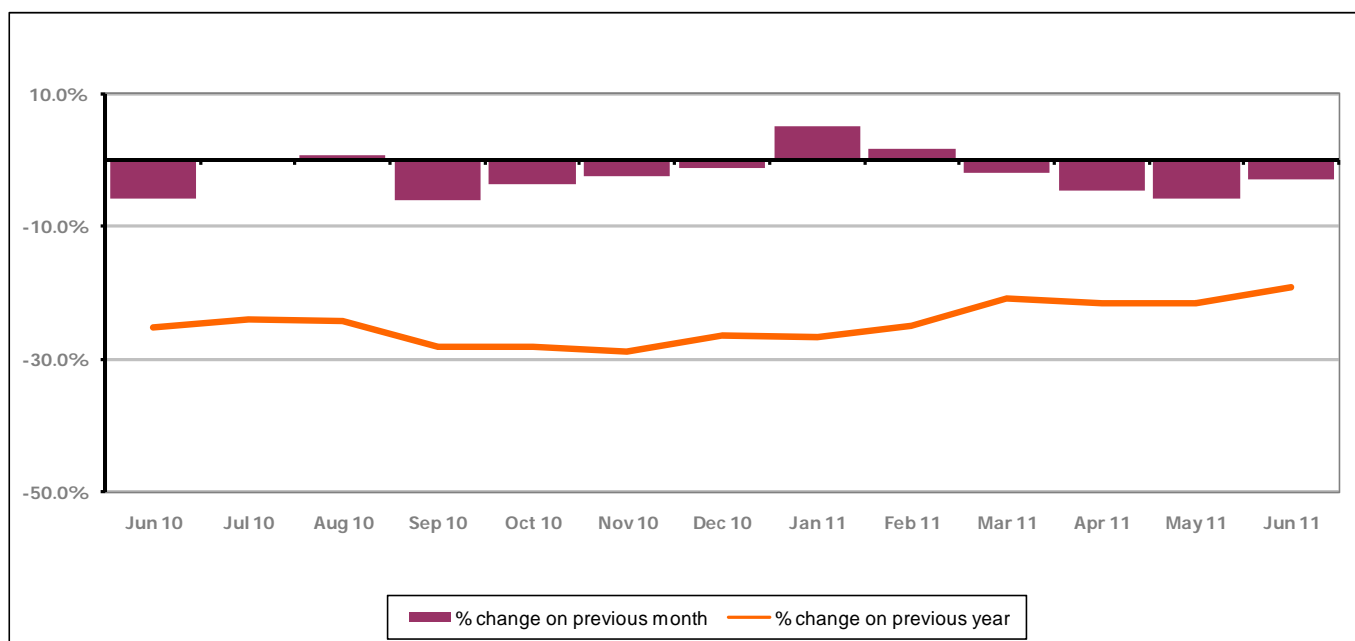
Figure 17: Stroud District claimants - Month on Month and Year on Year change

Figure 17 shows the monthly claimant count decreased by -3.0% since May 2011. The change on the previous year has increased slightly between May 2011 and June 2011 to -19.3%.

PART 4: LOCAL AUTHORITY AND DISTRICT ANALYSIS

4.5 Stroud District continued...

Figure 18: Claimant rates across Stroud District wards - June 2011

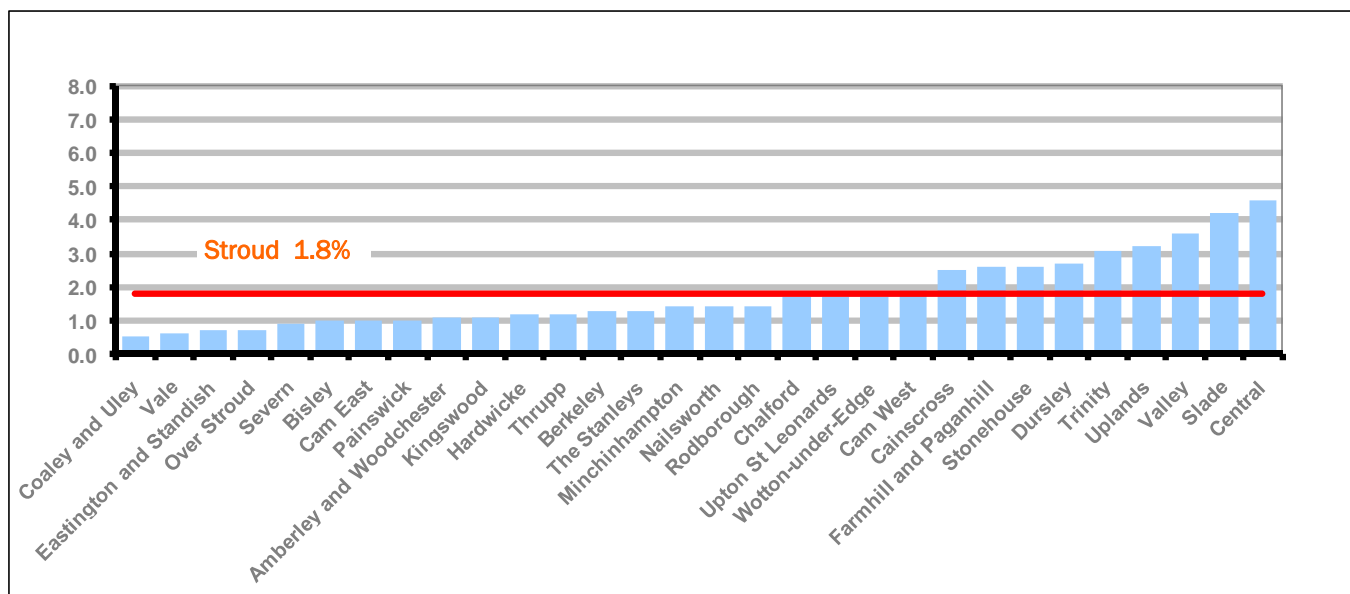
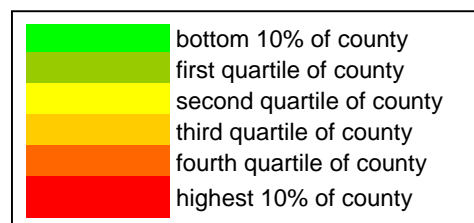


Figure 18 shows the claimant rates in Stroud District wards. The red line represents the average claimant rate across the District of 1.8%. Ten wards are above the average.

Table 9: Analysis of Claimant Count at Stroud District ward level - June 2011

District	Ward	Rate	Rank*
Stroud	Coaley and Uley	0.5	4
Stroud	Vale	0.6	7
Stroud	Eastington and Standish	0.7	9
Stroud	Over Stroud	0.7	9
Stroud	Severn	0.9	17
Stroud	Bisley	1.0	22
Stroud	Cam East	1.0	22
Stroud	Painswick	1.0	22
Stroud	Amberley and Woodchester	1.1	32
Stroud	Kingswood	1.1	32
Stroud	Hardwicke	1.2	47
Stroud	Thrupp	1.2	47
Stroud	Berkeley	1.3	54
Stroud	The Stanleys	1.3	54
Stroud	Minchinhampton	1.4	61
Stroud	Nailsworth	1.4	61
Stroud	Rodborough	1.4	61
Stroud	Chalford	1.7	76
Stroud	Upton St Leonards	1.7	76
Stroud	Wotton-under-Edge	1.7	76
Stroud	Cam West	1.9	86
Stroud	Cainscross	2.5	102
Stroud	Farmhill and Paganhill	2.6	106
Stroud	Stonehouse	2.6	106
Stroud	Dursley	2.7	111
Stroud	Trinity	3.1	116
Stroud	Uplands	3.2	119
Stroud	Valley	3.6	124
Stroud	Slade	4.2	129
Stroud	Central	4.6	133



* 1 = "best" and 142 = "worst"

Table 9 shows overall claimant rates for Stroud District wards and their position relative to all wards in Gloucestershire.

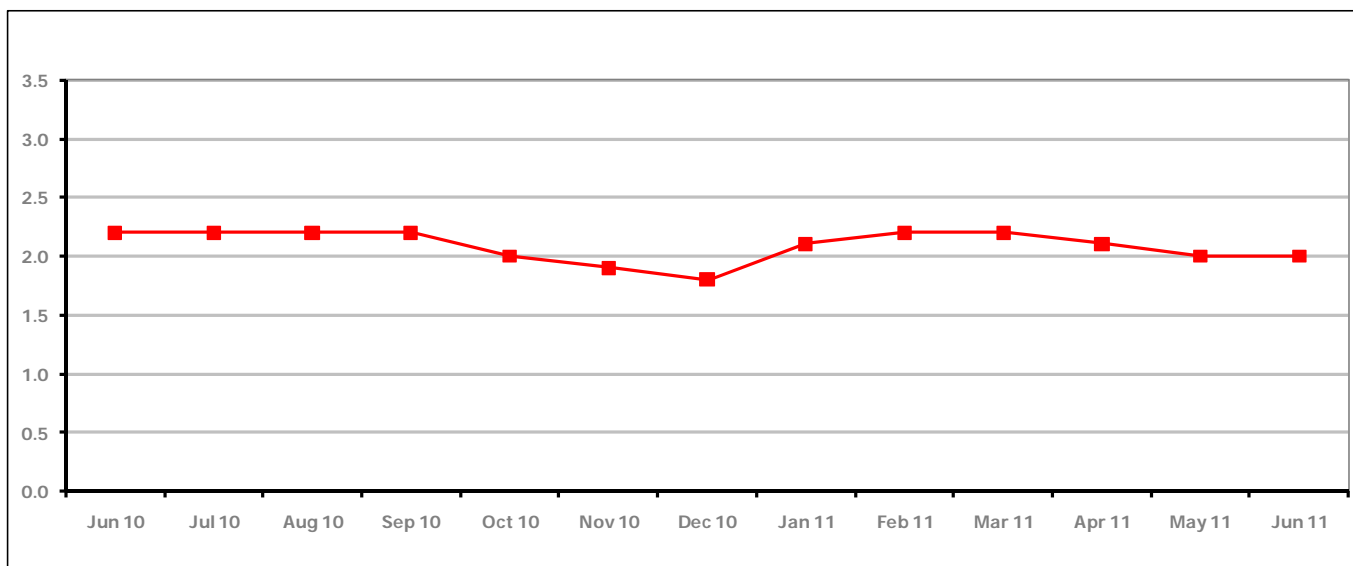
PART 4: LOCAL AUTHORITY DISTRICT AND WARD ANALYSIS**4.6 Tewkesbury District****Claimant Rate and Claimant Count***Figure 19: Tewkesbury District claimant rate over the last year*

Figure 19 shows the claimant rate for Tewkesbury District remained the same as last month at 2.0%.

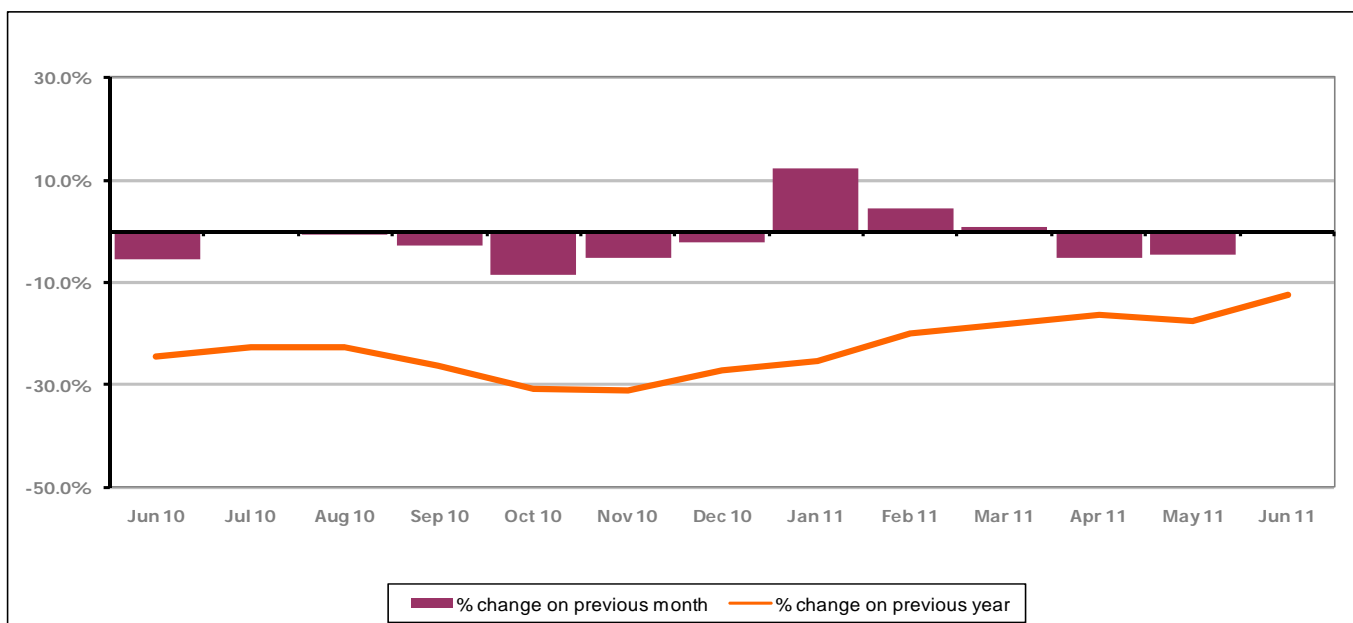
Figure 20: Tewkesbury District claimants - Month on Month and Year on Year change

Figure 20 shows that the monthly claimant count increased in June 2011 by 0.1%. The change on the previous year increased between June 2011 and May 2011 to -12.4%.

PART 4: LOCAL AUTHORITY AND DISTRICT ANALYSIS

4.6 Tewkesbury District continued...

Figure 21: Claimant rates across Tewkesbury District wards - June 2011

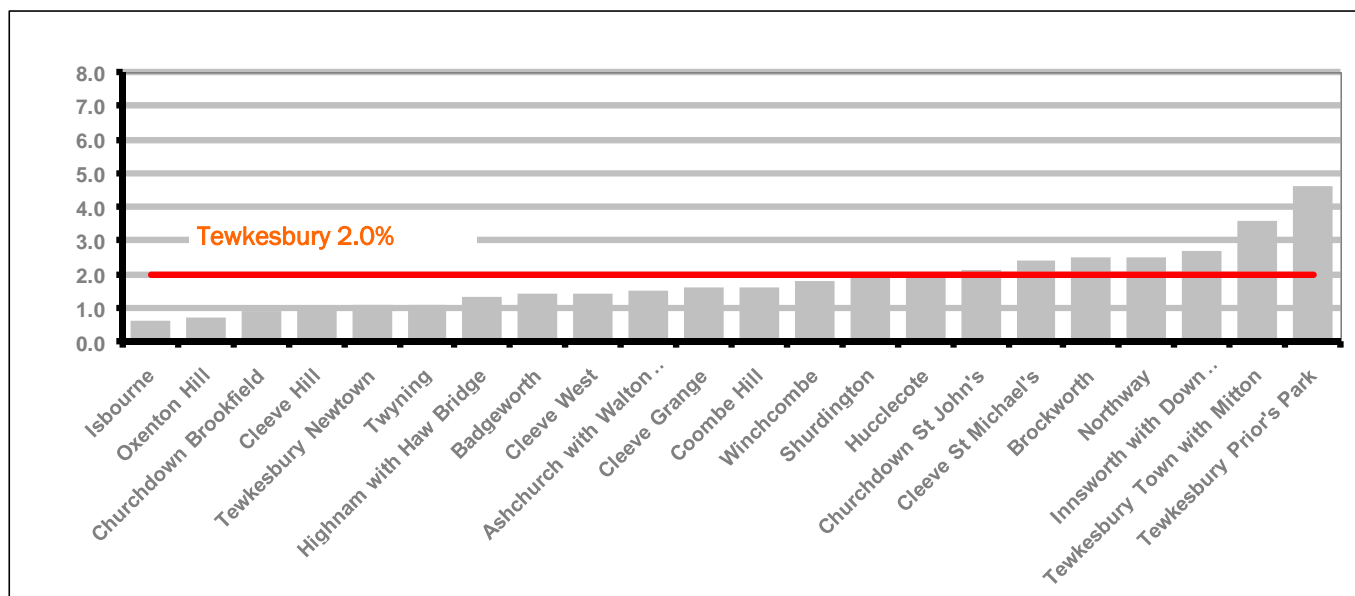
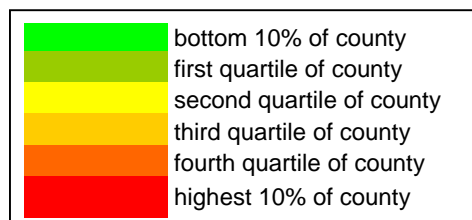


Figure 21 shows the claimant rates in Tewkesbury District wards. The red line represents the average claimant rate across the District of 2.0% and seven wards are above the average.

Table 10: Analysis of Claimant Count at Tewkesbury District level - June 2011

District	Ward	Rate	Rank*
Tewkesbury	Isbourne	0.6	7
Tewkesbury	Oxenton Hill	0.7	9
Tewkesbury	Churchdown Brookfield	0.9	17
Tewkesbury	Cleeve Hill	1.0	22
Tewkesbury	Tewkesbury Newtown	1.1	32
Tewkesbury	Twynning	1.1	32
Tewkesbury	Highnam with Haw Bridge	1.3	54
Tewkesbury	Badgeworth	1.4	61
Tewkesbury	Cleeve West	1.4	61
Tewkesbury	Ashchurch with Walton Cardiff	1.5	68
Tewkesbury	Cleeve Grange	1.6	71
Tewkesbury	Coombe Hill	1.6	71
Tewkesbury	Winchcombe	1.8	81
Tewkesbury	Shurdington	1.9	86
Tewkesbury	Hucclecote	2.0	92
Tewkesbury	Churchdown St John's	2.1	93
Tewkesbury	Cleeve St Michael's	2.4	99
Tewkesbury	Brockworth	2.5	102
Tewkesbury	Northway	2.5	102
Tewkesbury	Innsworth with Down Hatherley	2.7	111
Tewkesbury	Tewkesbury Town with Mitton	3.6	124
Tewkesbury	Tewkesbury Prior's Park	4.6	133

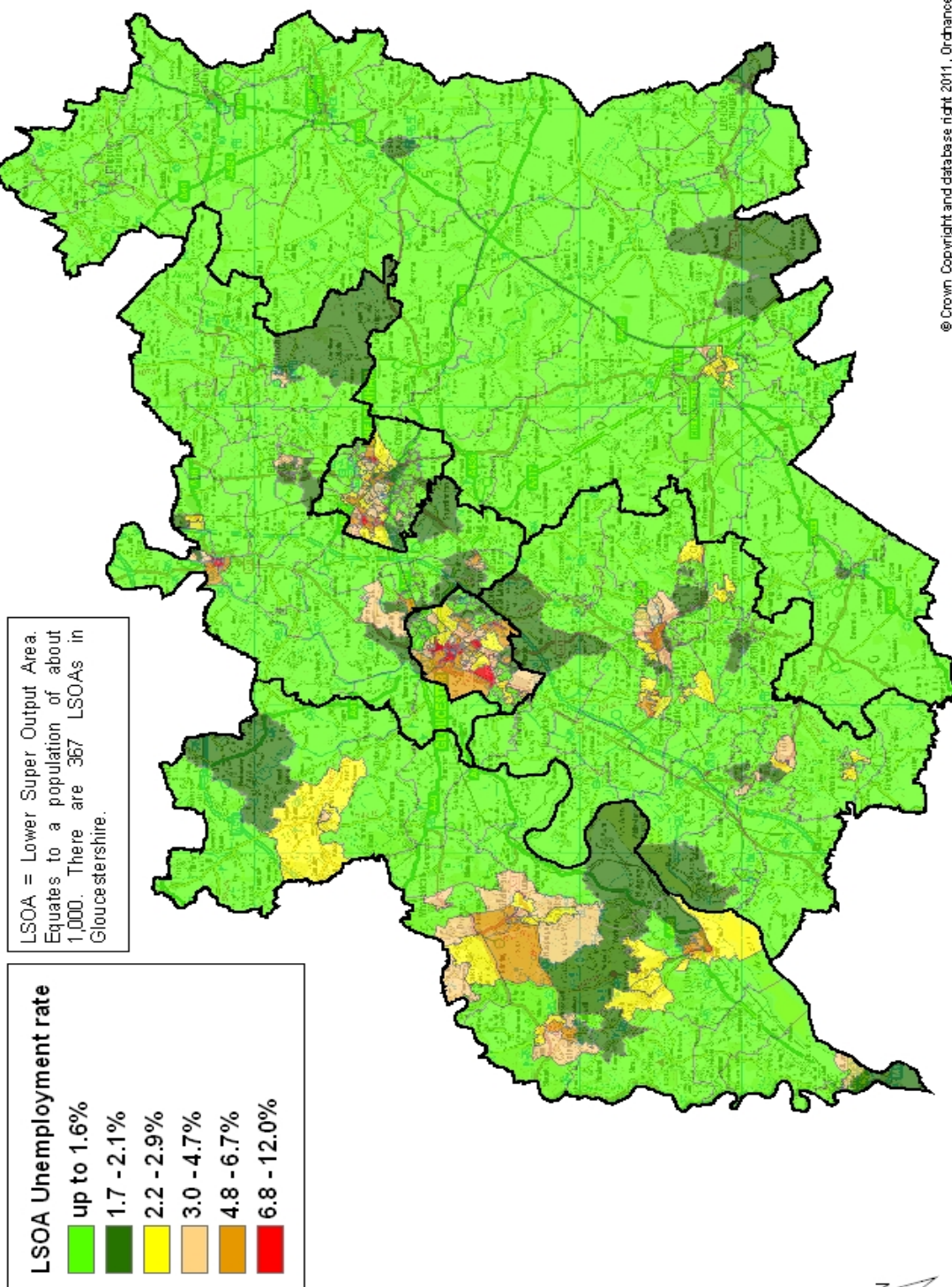


* 1 = "best" and 142 = "worst"

Table 10 shows overall claimant rates for Tewkesbury District wards and their position relative to all wards in Gloucestershire.

PART 5: MAP SHOWING DISTRIBUTION OF CLAIMANT RATE ACROSS GLOUCESTERSHIRE

Claimant unemployment rate by LSOA in Gloucestershire June 2011

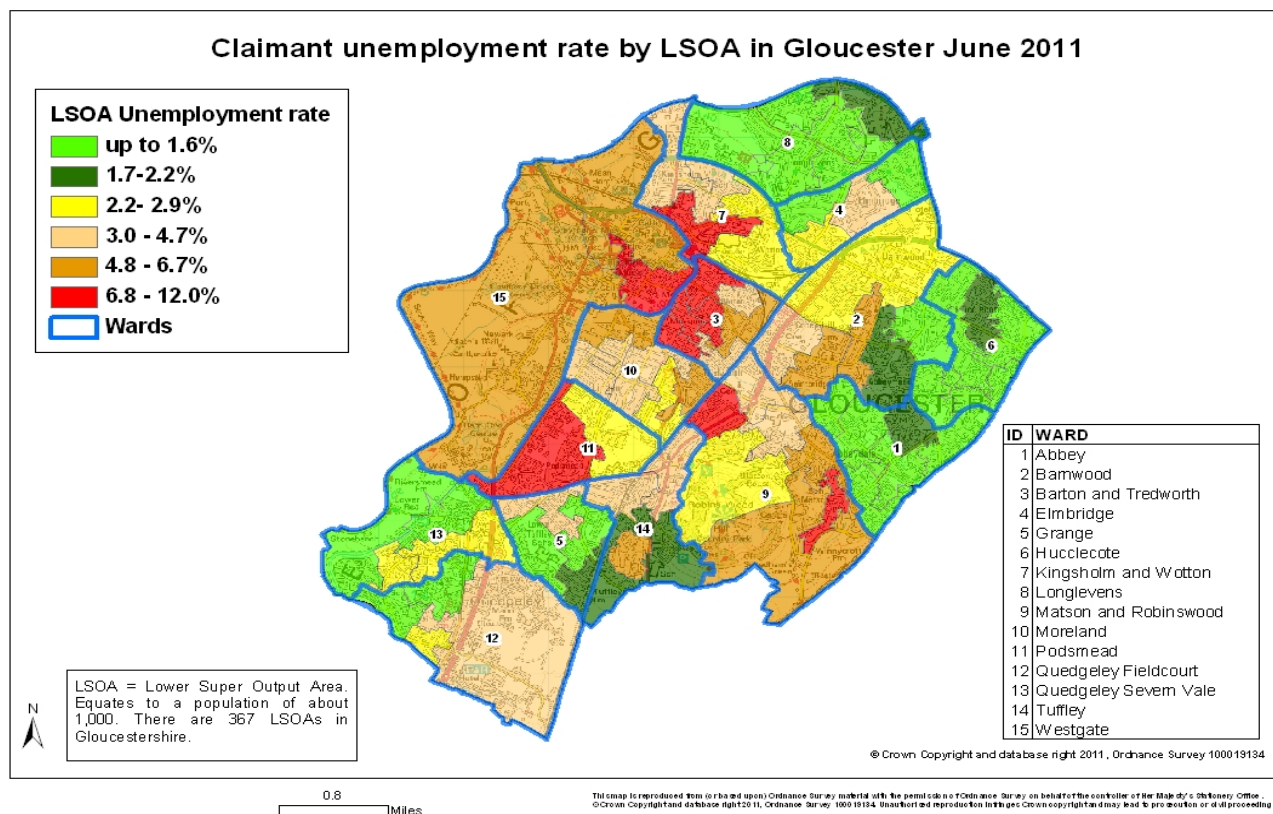
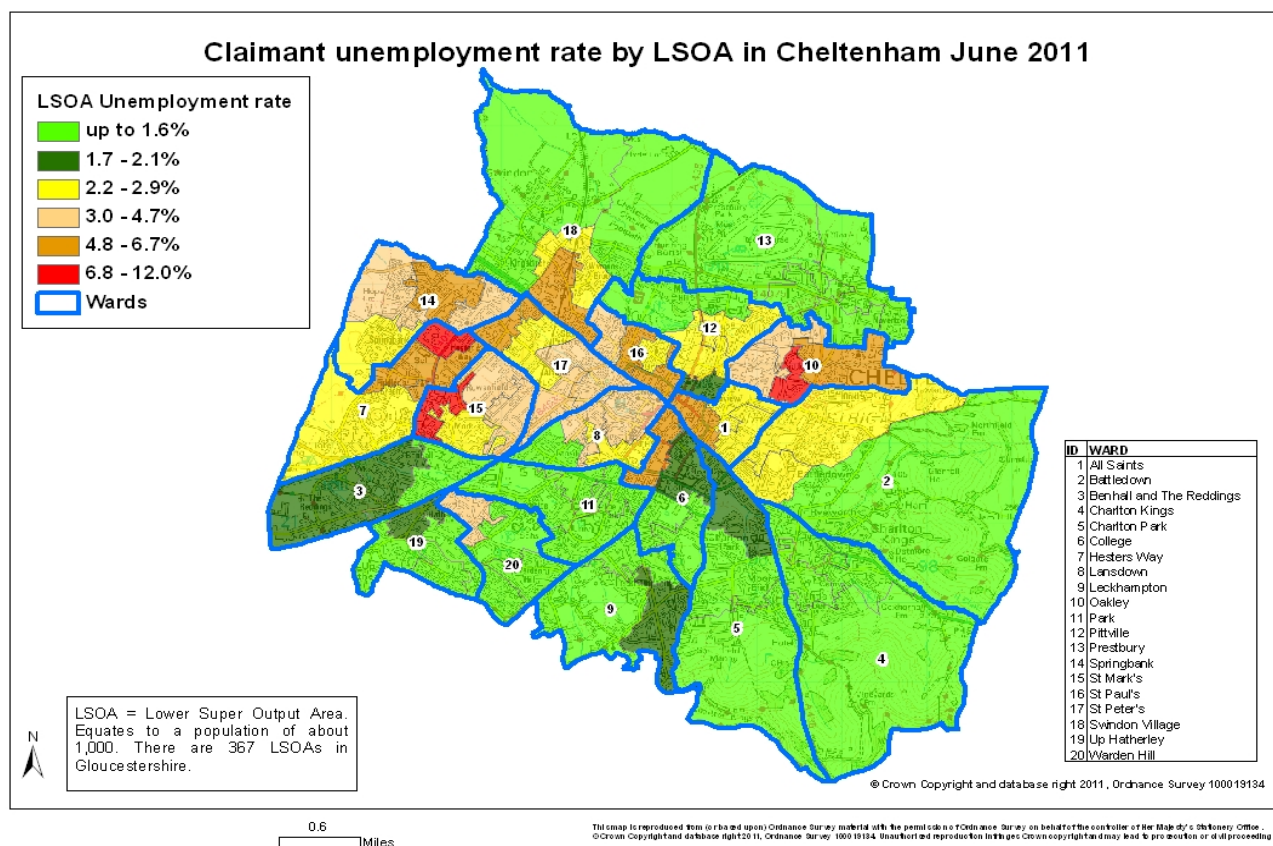


© Crown Copyright and database right 2011, Ordnance Survey 100019134

This map is reproduced from the published Ordnance Survey map with the permission of the Controller of Her Majesty's Stationery Office. Crown Copyright and database right 2011, Ordnance Survey 100019134. Unauthorised reproduction in any form may lead to prosecution or other proceedings.

7 Miles

PART 5: MAP SHOWING DISTRIBUTION OF CLAIMANT RATE ACROSS GLOUCESTERSHIRE



PART 6: YOUNG PEOPLE NOT IN EDUCATION, EMPLOYMENT OR TRAINING (NEET) IN GLOUCESTERSHIRE

Data provided by Prospects, the Connexions service in Gloucestershire on the situation of young people (16-18) in Gloucestershire who are not in education, employment or formal training.

Connexions Gloucestershire is required to report performance with the 16-18 age range against nationally defined criteria for counting the NEET group. The NEET group includes young people actively seeking education, employment or training as well as those young people who are either not yet ready or who are unable to access these opportunities because of their personal circumstances. The figures quoted below include young people in both of these categories.

Summary

As at the end of June 2010 there were 582 young people aged 16-18 not in education, employment or training in Gloucestershire and this figure translates into an adjusted (*) 16-18 NEET population of 4.1%. The total number of NEET decreased by 33 in June 2010 compared to May 2010. All Area Teams showed a decrease in their number of NEET young people.

Total NEET Group by District Area

June 2010 NEET Data

	Cheltenham	Cotswold	Forest	Gloucester	Stroud	Tewkesbury	Total
Number of NEET	128	37	59	185	112	61	582
Cohort	2421	2169	2254	4107	2503	1740	15194
% NEET	5.3%	1.7%	2.6%	4.5%	4.5%	3.5%	4.1%

If you would like to receive any further information on Gloucestershire's NEET strategy then please contact Ruth.Critchlow@gloucestershire.gov.uk or telephone 01452 551267.

(*) Adjustment includes a proportion of young people aged 16-18 whose outcomes are not-known to Connexions Gloucestershire