

**NOTICE OF DEFINITIVE MAP AND STATEMENT MODIFICATION ORDER**  
**SECTION 53 WILDLIFE AND COUNTRYSIDE ACT 1981**  
**GLOUCESTERSHIRE COUNTY COUNCIL**  
**ADDITIONAL PUBLIC FOOTPATH CONNECTING OAK WAY TO MST30**  
**STONEHOUSE PARISH, STROUD**  
**MODIFICATION ORDER 2025**

The above Order made on 14 January 2025, if confirmed as made, will modify the Definitive Map and Statement for the area by adding to them the following length of public footpath connecting Oak Way to MST30, Stonehouse Parish:

A length of public footpath in Stonehouse Parish, Gloucestershire which commences at Ordnance Survey Grid Reference ("OSGR") SO 8093/0537 at its junction with Oak Way (publicly maintainable highway 47737) and running for approximately 8.5 metres in a generally northerly direction (co-existing with publicly maintainable highway 61293), then proceeding in a generally north north easterly direction for approximately 99 metres to OSGR SO 8095/0547 at its junction with public footpath MST30. A copy of the Order and Order Map may be seen free of charge during normal office hours at Gloucestershire County Council, Shire Hall, Westgate Street, Gloucester GL1 2TG and at Stroud District Council, Ebley Mill, Ebley Wharf, Stroud, GL5 4UB. Copies of the Order and Order Plan may be obtained free of charge by emailing [modificationorders@gloucestershire.gov.uk](mailto:modificationorders@gloucestershire.gov.uk) **(please quote reference 573/11/212(4))**.

Any representations about or objections to the Orders may be sent in writing to the Asset Data (Highway Records & DMMO) Team Leader, Gloucestershire County Council, Shire Hall, Westgate Street, Gloucester, GL1 2TH not later than 5 March 2025. Please state the grounds on which they are made. **(Please quote reference 573/11/212(4))**. If no such representations or objections are duly made, or if any so made are withdrawn, the Gloucestershire County Council instead of submitting the order to the Secretary of State for the Environment, Food and Rural Affairs may confirm the Order. If the Order is submitted to the Secretary of State for the Environment, Food and Rural Affairs for confirmation, any representations or objections which have been duly made and not withdrawn will be sent with it. **Dated 22 January 2025.**  
**Asset Data (Highway Records & DMMO) Team Leader**

Wednesday January 22, 2025

stroudnewsandjournal.co.uk

25

## TRAFFIC & Roads

### GLoucestershire County Council

#### NOTICE OF DEFINITIVE MAP AND STATEMENT MODIFICATION ORDER SECTION 53 WILDLIFE AND COUNTRYSIDE ACT 1981

##### GLoucestershire County Council

#### ADDITIONAL PUBLIC FOOTPATHS ACROSS LAND KNOWN AS VERNEY FIELDS & SURROUNDING AREA, STONEHOUSE PARISH MODIFICATION ORDER 2025

The above Order made on 14 January 2025, confirmed as made, will modify the Definitive Map and Statement for the area by adding to them the following lengths of public footpath of 2metre width in Stonehouse Parish, Gloucestershire:

A length which commences at Ordnance Survey Grid Reference ("OSGR") S08119/0534 at its junction with Public Footpath MST30 and runs in a generally north north easterly direction for approximately 80metres to OSGR S08123/0541.

A length which commences at OSGR S08123/0541 runs in a generally south south easterly direction for approximately 81metres to OSGR S08128/0535.

A length which commences at OSGR S08123/0541 runs in a generally east south easterly direction for approximately 77metres to OSGR S08130/0539 at its junction with Public Footpath MST56.

A length which commences at OSGR S08109/0566 at its junction with Public Footpath MST42 and runs in a generally south westerly direction for approximately 76metres to OSGR S08106/0560 then continues in a generally south south westerly direction for a further 76metres to OSGR S08105/0553 then proceeds in a generally south easterly direction for a further 21metres to OSGR S08118/0535 at its junction with Public Footpath MST30.

A length which commences at OSGR S08118/0535 runs in a generally south south westerly direction for approximately 64metres to OSGR S08116/0529 then continues in a generally east south easterly direction for approximately 56metres to OSGR S08121/0526 at its junction with Public Footpath MST62.

A length which commences at OSGR S08095/0548 at its junction with Public Footpath MST30 and runs in a generally east north easterly direction for approximately 121metres to OSGR S08105/0553.

A length which commences at OSGR S08093/0549 at its junction with Public Footpath MST30 and runs in a generally east south easterly direction for approximately 286metres to OSGR S08118/0535.

A length which commences at OSGR S08100/0545 at its junction with the claimed route described directly above, approximately 22metres north of Public Footpath MST30 and runs in a generally easterly and then south easterly direction for approximately 206metres to OSGR S08118/0535.

A length which commences at OSGR S08101/0542 at its junction with Public Footpath MST30 and runs in a generally south easterly direction for approximately 96metres to the viewpoint at OSGR S08106/0534 then continues in a generally easterly direction for approximately 119metres to OSGR S08118/0535.

A length which commences at OSGR S08109/0535 at its junction with the claimed route described directly above, approximately 33metres south of Public Footpath MST30 and runs in a generally south easterly direction for approximately 91metres to OSGR S08116/0529.

A length which commences at OSGR S08120/0514 at its junction with Public Footpath MST62 and runs in a generally south westerly direction for approximately 115metres to OSGR S08116/0504 at its junction with Public Footpath MST27.

A length which commences at OSGR S08120/0511 at its junction with the claimed route described directly above, approximately 90metres north of Public Footpath MST27 and runs in a generally southerly direction for approximately 101metres to OSGR S08121/0502 at its junction with Public Footpath MST27.

A copy of the Order and Order Map may be seen free of charge during normal office hours at Gloucestershire County Council, Shire Hall, Westgate Street, Gloucester, GL1 2TG and Stroud District Council, Ebley Mill, Ebley Wharf, Stroud, GL5 4UB. Copies of the Order and Order Map may be obtained free of charge by emailing modificationorders@gloucestershire.gov.uk (please quote reference 573/11/212(6)(7)(8)(9)&(10)). Any representations about or objections to the Orders may be sent in writing to the Asset Data (Highway Records & DMMO) Team Leader, Gloucestershire County Council, Shire Hall, Westgate Street, Gloucester, GL1 2TH not later than 5 March 2025. Please state the grounds on which they are made. (Please quote reference 573/11/212(6)(7)(8)(9)&(10)). If no such representations or objections are duly made, or if any so made are withdrawn, the Gloucestershire County Council instead of submitting the order to the Secretary of State for the Environment, Food and Rural Affairs may confirm the Order. If the Order is submitted to the Secretary of State for the Environment, Food and Rural Affairs for confirmation, any representations or objections which have been duly made and not withdrawn will be sent with it.

Dated 22 January 2025.

Asset Data (Highway Records & DMMO) Team Leader

#### NOTICE OF DEFINITIVE MAP AND STATEMENT MODIFICATION ORDER SECTION 53 WILDLIFE AND COUNTRYSIDE ACT 1981

##### GLoucestershire County Council

#### DELETION OF PART OF PUBLIC FOOTPATH MST28, STONEHOUSE TOWN MODIFICATION ORDER 2025

The above Order made on 14 January 2025, confirmed as made, will modify the Definitive Map and Statement for the area by deleting the following length of Public Footpath MST28 in Stonehouse Parish, Gloucestershire which commences at Ordnance Survey Grid Reference ("OSGR") S0 8113/ 0531 runs in a generally south south westerly direction for approximately 232 metres to OSGR S08106/0509 at its junction with Public Footpath MST27. A copy of the Order and Order Map may be seen free of charge during normal office hours at Gloucestershire County Council, Shire Hall, Westgate Street, Gloucester, GL1 2TG and Stroud District Council, Ebley Mill, Ebley Wharf, Stroud, GL5 4UB. Copies of the Order and Order Map may be obtained free of charge by emailing modificationorders@gloucestershire.gov.uk (please quote reference 573/11/212(12)).

Any representations about or objections to the Orders may be sent in writing to the Asset Data (Highway Records & DMMO) Team Leader, Gloucestershire County Council, Shire Hall, Westgate Street, Gloucester, GL1 2TH not later than 5 March 2025. Please state the grounds on which they are made. (Please quote reference 573/11/212(12)). If no such representations or objections are duly made, or if any so made are withdrawn, the Gloucestershire County Council instead of submitting the order to the Secretary of State for the Environment, Food and Rural Affairs may confirm the Order. If the Order is submitted to the Secretary of State for the Environment, Food and Rural Affairs for confirmation, any representations or objections which have been duly made and not withdrawn will be sent with it.

Dated 22 January 2025.

Asset Data (Highway Records & DMMO) Team Leader

#### NOTICE OF DEFINITIVE MAP AND STATEMENT MODIFICATION ORDER SECTION 53 WILDLIFE AND COUNTRYSIDE ACT 1981

##### GLoucestershire County Council, ADDITIONAL PUBLIC FOOTPATH CONNECTING OAK WAY TO

#### MST30 STONEHOUSE PARISH, STROUD MODIFICATION ORDER 2025

The above Order made on 14 January 2025, confirmed as made, will modify the Definitive Map and Statement for the area by adding to them the following length of public footpath connecting Oak Way to MST30, Stonehouse Parish:

A length of public footpath in Stonehouse Parish, Gloucestershire which commences at Ordnance Survey Grid Reference ("OSGR") S0 8093/0537 at its junction with Oak Way (publicly maintainable highway 47737) and running for approximately 85 metres in a generally northerly direction (co-existing with publicly maintainable highway 61293), then proceeding in a generally north north easterly direction for approximately 99 metres to OSGR S0 8095/0547 at its junction with public footpath MST30. A copy of this Order and Order Map may be seen free of charge during normal office hours at Gloucestershire County Council, Shire Hall, Westgate Street, Gloucester, GL1 2TG and at Stroud District Council, Ebley Mill, Ebley Wharf, Stroud, GL5 4UB. Copies of the Order and Order Map may be obtained free of charge by emailing modificationorders@gloucestershire.gov.uk (please quote reference 573/11/212(4)).

Any representations about or objections to the Orders may be sent in writing to the Asset Data (Highway Records & DMMO) Team Leader, Gloucestershire County Council, Shire Hall, Westgate Street, Gloucester, GL1 2TH not later than 5 March 2025. Please state the grounds on which they are made. (Please quote reference 573/11/212(4)). If no such representations or objections are duly made, or if any so made are withdrawn, the Gloucestershire County Council instead of submitting the order to the Secretary of State for the Environment, Food and Rural Affairs may confirm the Order. If the Order is submitted to the Secretary of State for the Environment, Food and Rural Affairs for confirmation, any representations or objections which have been duly made and not withdrawn will be sent with it.

Dated 22 January 2025.

Asset Data (Highway Records & DMMO) Team Leader

#### GLoucestershire County Council, NOTICE OF DEDICATION OF PUBLIC FOOTPATH AT

#### ROOKSMOOR MILLS, WOODCHESTER PURSUANT TO S25 HIGHWAYS ACT 1980

NOTICE is hereby given that on the 19 December 2024 the strip of land described below was dedicated for use by the public to the intent that the same shall thereafter be enjoyed by the public as a public footpath. DESCRIPTION OF SITE OF FOOTPATH TO BE CREATED: A length of public footpath in the Parish of Woodchester that commences at Ordnance Survey Grid Reference ("OSGR") S08417/0317 at the junction with the county highway A46 (Bath Road) then extends in a generally west south westerly direction along the footpath for approximately 20m then continues in a south south easterly direction for approximately 15 metres then proceeds in a generally west south westerly direction for approximately 30m to a set of shallow steps, extending for a further 10 metres to OSGR S08413/0314 at its junction with the Stonehouse - Nailsworth Cycle Track.

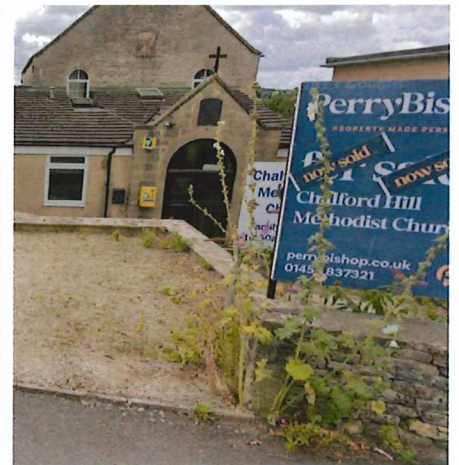
Dated: 22 January 2025 For: Assistant Director of Legal Services, Shire Hall, Westgate Street, Gloucester, GL1 2TG

## PLANNING

### STROUD DISTRICT COUNCIL

The following planning applications have been received. Copies can be viewed at Stroud District Council's offices at Ebley Mill, Ebley Wharf, Stroud, GL5 4UB during office hours. Applications can also be viewed on the Council's website at [www.stroud.gov.uk/planning](http://www.stroud.gov.uk/planning). Key: 1 - Departure from Local Plan; 2 - Affect a Public Right of Way; 3 - Within 10m of relevant railway land; 4 - EIA development with ES; 5 - Listed Building; 6 - Vary or discharge conditions LBC (exterior works); 7 - Affect the setting of a Listed Building, affect the character or appearance of a Conservation Area; 8 - Major Development (Article 2, DMP0); S.25/0019/HHOLD Mrs Brown, 82 Windmill Road, Minchinhampton, Partial demolition of existing side extension & construction of new side extension & loft conversion including dormer windows (2). S.24/2095/ADV Ms Cook, 2605-0018 Bus Shelter, Stand A, Merrywalks, Double sided, internally illuminated, 6 sheet advertising panel with paper posters forming an integral part of a bus shelter (7). S.24/2251/FUL The Stroud Grace Network, Brimscombe Mills Estate, Extension of Planning Permission S.21/2605/FUL for continued use of site & buildings as a Social Enterprise Hub (Sui Generis) for a period of 3 years, with additional parking (7). S.24/2303/HHOLD Ponting, 2 Millend Row, Millend Lane, Eastington, Single storey extension (7). S.25/0039/HHOLD Jameson, 15 Chapel Street, Single storey front extension (7). S.24/2123/FUL Brent-Smith, Brentlands Farm, Upton Lane, Brookthorpe, Formation of a new access. Erection of fencing & a gate (2,7). S.24/2246/HHOLD Mrs Bendall, The Barn House, Peaches Farm, Cirencester Road, Minchinhampton, Single storey rear extension (7). S.25/0005/LBC Mr Smith, 52 West End, Minchinhampton, Install a domestic charging point for electric vehicles (5,7). S.25/0043/HHOLD Mr & Mrs Turnock, 2A Twyver Close, Upton St Leonards, Front dormer extension (2). S.24/2142/HHOLD Mr Lloyd, The Homestead, High Street, Chalford, Embedded solar panels on outbuilding (7). S.24/2291/FUL & S.24/2292/LBC Lankirk Developments Ltd, Outbuildings At Rose & Crown, Church Street, Nymphsfield, Alteration, extension & change of use of the existing outbuilding into a single residential dwelling (C3) (5,7). S.24/2175/HHOLD Mr Pym, 11 Elmore, Gloucester, Two-storey rear extension & a front porch (2). Any representations in respect of the above applications should be made in writing to the above address, via [www.stroud.gov.uk/planning](http://www.stroud.gov.uk/planning) or [planning@stroud.gov.uk](mailto:planning@stroud.gov.uk) no later than 12.02.2025.

# Home conversion plan revealed for former church



Plans to transform former Chalford Methodist Church Image: Google Maps

A NUMBER of planning applications have been received by Stroud District Council, including proposals to transform a former church.

All of these planning applications can be found under the Public Notices on the homepage of [Stroudnewsandjournal.co.uk](http://Stroudnewsandjournal.co.uk).

You will also find notices about temporary closures of footpaths and roads as well as appeals for information about last will and testaments.

The following planning applications have been received.

S.24/2289/LBC Mr Mcgough, Stroud District Council, Ebley Mill, Internal alterations to part of level 0 ground floor (5,7).

S.24/2197/HHOLD Mrs Graesser, Junipers, Edge Road, Painswick, Extension and conversion of existing garage into annex (7).

S.24/2310/FUL Mr & Mrs Harrison, Chalford Hill Methodist Church, Chalford Hill, Change of use and conversion of former Methodist church (F1 use class) to a single dwelling (C3 use class) (partly retrospective) (7).

S.24/2293/VAR Ms Klein, Land Parcel A & B, Moreton Valence, Gloucester, Variation of condition 9 (Construction Traffic - CTMP and CTMS) from permission S.24/0169/VAR(7,8).

S.24/2166/FUL Galgo & Weston, E5 Holdings,

Summerhouse Farm, Bath Road, Hardwicke, Proposed demolition, site clearance, and construction of employment development, comprising erection of no.4 buildings (Use Class B8), with ancillary office space (Use Class E) with all associated works(8).

S.24/2267/HHOLD Mr Overthrow, Hillside, Oakridge Lynch, Erection of a conservatory(2).

S.24/2282/HHOLD & S.24/2283/LBC Webster Hart LLP C/o JPCC, Painswick Lodge, Internal alterations & refurbishment, upgrading of existing services.

Remedial works to retained walls, partitions & ceilings. Removal of inappropriate rainwater goods. New entrance doors to north elevation (replacing an existing window) & reinstatement of south entrance doors. Existing opening door application. Landscaping works including reconfiguration of access drives(5,7).

S.24/2264/HHOLD Mr Russell, Bay Tree Cottage, Avening, Erection of an annex. (Retrospective)(2,7).

S.24/2309/LBC C/O Agent, Amberley Parochial School, Replacement of existing roof and associated works(5).

S.24/2285/FUL Mr Stenall, Minchinhampton Tennis Club, Old Rectory Field, Friday Street, Demolition of existing clubhouse and erection of new clubhouse(7).

## To view more Public Notices in your area

Visit our dedicated website: [publicnoticeportal.uk/stroud-news-and-journal](http://publicnoticeportal.uk/stroud-news-and-journal)



## What are Public Notices and what is their purpose?

Public notices are adverts placed by councils and other local authorities to inform people of developments in their areas. They can cover a wide variety of topics that may impact your life. They can include planning applications and appeals, road closures or proposals by pubs or nightclubs hoping to change their opening hours or make other variations. The purpose of a public notice is to make sure anybody - either an individual or a group - with an interest has an opportunity to find out about and comment on the proposal before a decision is made on whether to allow it to go ahead.

Find, save and share Public Notices that affect you in your local area.

Visit our dedicated website: [publicnoticeportal.uk/stroud-news-and-journal](http://publicnoticeportal.uk/stroud-news-and-journal)