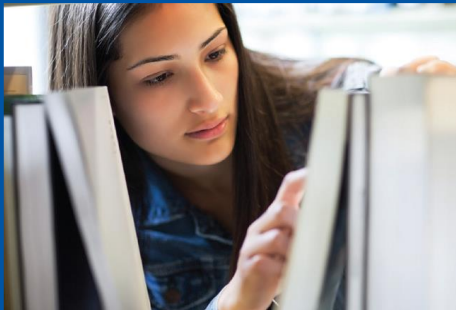


GLOUCESTERSHIRE SCHOOLS SIXTH FORM ADMISSION ARRANGEMENTS FOR SEPTEMBER 2025 ENTRY



GLOUCESTERSHIRE COUNTY COUNCIL

CONTENTS

Introduction

School and Academy Location Maps

All Saints' Academy

Archway School

Balcarras School

Berkeley Green UTC

Cheltenham Bournside School & Sixth Form Centre

Chipping Campden School

Chosen Hill School

Churchdown School Academy

Cleeve School

Dene Magna School

Farmor's School

Henley Bank High School

Holmleigh Park High School

Katharine Lady Berkeley's School

Marling School

Newent Community School and Sixth Form Centre

Pate's Grammar School

Rednock School

Ribston Hall High School

Sir Thomas Rich's School

St Peter's RC High School & Sixth Form Centre

Stroud High School

Tewkesbury Academy

The Crypt School

Wyedean School

Other Schools with 6th Forms

Other Post 16 Providers

Introduction

This booklet provides information about schools in Gloucestershire with sixth form provision and their entry requirements.

This booklet does not address the admissions arrangements for colleges or work based learning providers. For information about other options available after Year 11 see the page on Other Post 16 Providers.

If you are in Year 11 or below, you will need to remain in education, training, or employment with training until at least your 18th birthday.

Staying in full time education after year 11 is the right choice for many people, however, you do not need to stay at the same school, and A Levels are not the only option. Schools and colleges also offer BTEC and NVQ courses.

There are several ways to train or study:

- Studying full time in school or college, or with a training provider
- Working or volunteering full time, while continuing with part-time education or training
- Taking up an Apprenticeship or Traineeship.

If you decide to stay in education, we recommend that you:

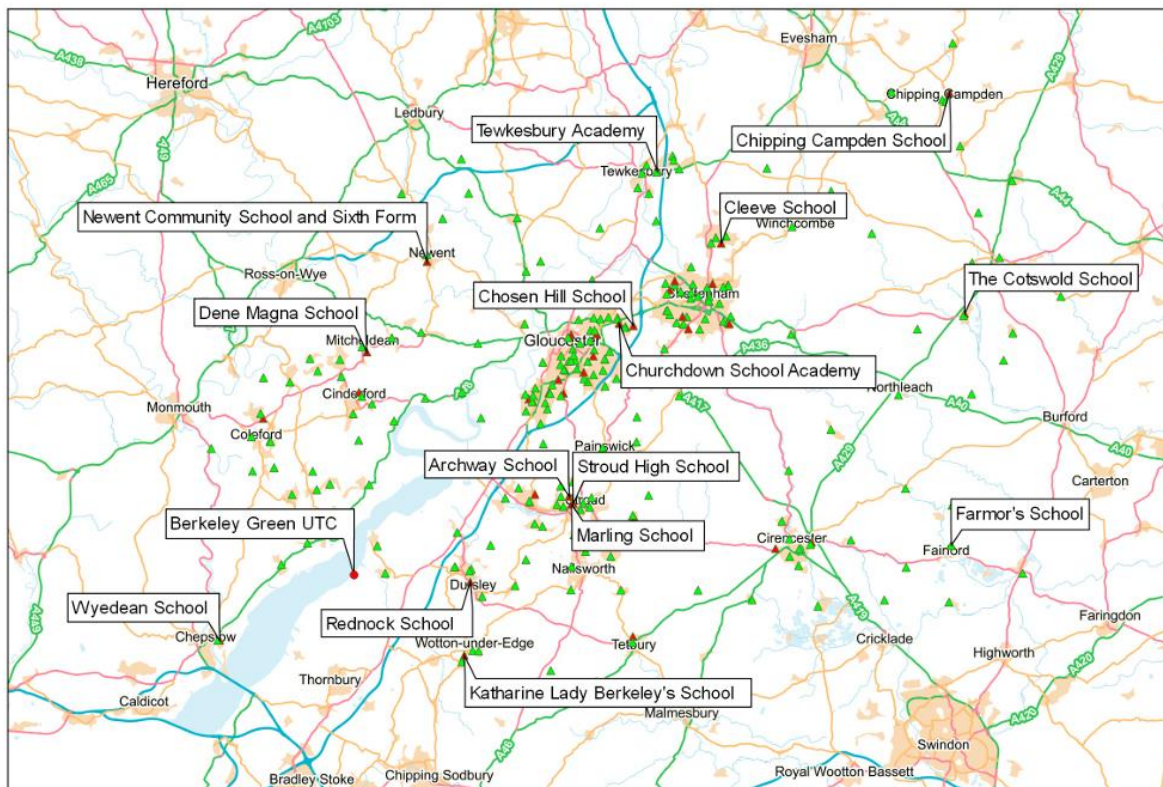
- Attend the Open Days/Evenings at the schools or colleges you are considering (Details of Open Days/Evenings can be obtained direct from the chosen school or schools by contacting them or looking at their website.)
- Read the prospectus from the schools or colleges you are considering
- Think carefully about the subjects you want to study

For admission to a school's sixth form – We recommend that you read their information in this booklet to help you understand how your application for a place will be treated (admission to a college is not regulated in the same way).

School and Academy Location Maps

Gloucestershire Schools Map

- Archway School
- Berkeley Green UTC
- Chipping Campden School
- Chosen Hill School
- Churchdown School
- Cleeve School
- Dene Magna School
- Farmors School
- Katharine Lady Berkeley's School
- Marling School
- Newent Community School & Sixth Form Centre
- Rednock School
- Stroud High School
- Tewkesbury Academy
- The Cotswold Academy
- Wyedean School



© Crown Copyright and database rights 2024. Ordnance Survey. You are not permitted to copy, sub-license, distribute or sell any of this data to third parties in any form.

Gloucester City Schools Map

Denmark Road High School

Henley Bank High School

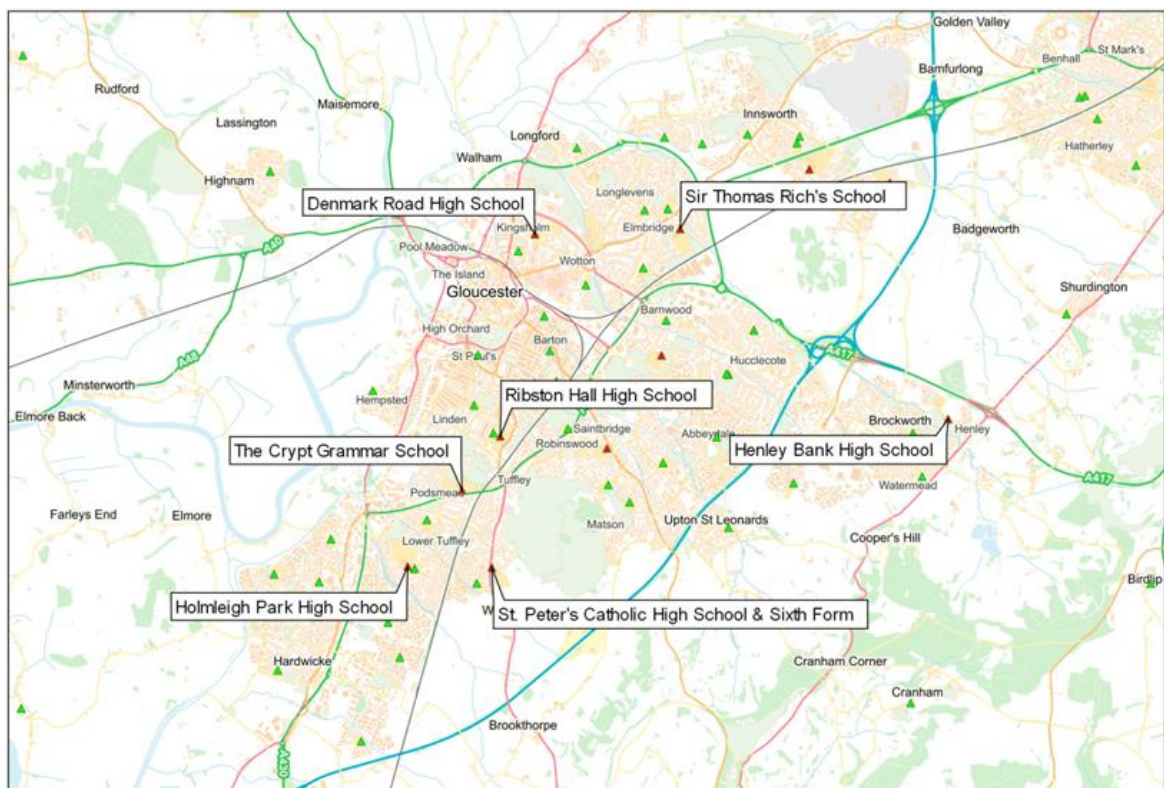
Holmleigh Park High School

Ribston Hall High

Sir Thomas Rich's School

St Peter's Catholic High School

The Crypt School



© Crown Copyright and database rights 2024. Ordnance Survey

You are not permitted to copy, sub-license, distribute or sell any of this data to third parties in any form

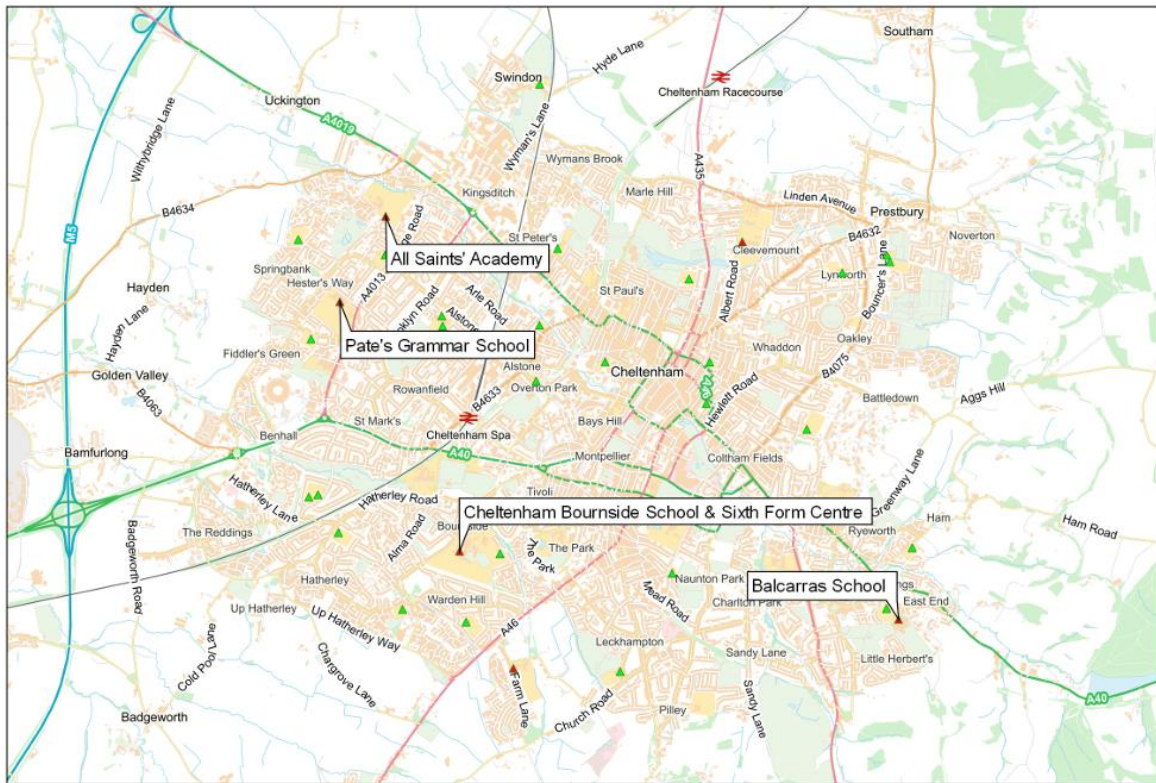
Cheltenham Schools Map

All Saints' Academy

Balcarras School

Cheltenham Bournside School & Sixth Form Centre

Pates Grammar School



© Crown Copyright and database rights 2024. Ordnance Survey

You are not permitted to copy, sub-license, distribute or sell any of this data to third parties in any form

All Saints' Academy

Applications from External Students

Each year a number of students join our Sixth Form from local and international schools. We welcome these applications. The entry requirements are the same for internal and external applicants.

Entry Requirements

Applicants should meet the entry requirements to the Sixth Form as detailed in the prospectus (see the Academy website).

Pathway Prior Attainment Options

Pathway 1 – Attain 6 GCSE's grade 9-6 or above including English and Maths (grade 4/5) 3 subjects mainly A Levels.

Pathway 2 – Attain 5 GCSE's grade 9-4 including English and Maths (grade 4) 3 subjects – a mixture of A Level and level 3 BTEC subjects.

Pathway 3 - Attain 3 GCSE's grades 9-4 including English and Maths (grade 4) 3 subjects at level 3 BTEC plus English or Maths GCSE retake.

Pathway 4 – Key Skills Course- If you are unlikely to attain 'Level 4' grade in English and Maths you will need to follow this pathway where you will continue to study GCSE English and Maths alongside work experience support. We will try to be flexible to include subjects that meet the needs of these students.

Students are given high quality support to choose the most appropriate courses. We do consider each applicant on their merits. We will look at your attendance, abilities, gifts, talents and above all your commitment to do your best will be considered.

Where following the allocation of places to the Academy's own Year 11 students, the number of external applications exceeds the number of post-16 places available and after the admission of students with statements of Special Educational Needs where

All Saints' Academy is named on the statement, the criteria will be applied in the order in which they are set out below:

Looked After, and Previously Looked After Children including children who have previously been 'Looked after' and later subject to an adoption, residence, or special guardianship order.

Other applicants meeting entry requirements.

Oversubscription

In the event of oversubscription our first priority would be to expand our provision. In the unlikely event of this not being possible we would apply the following:

Where there is oversubscription on any of these criteria, applicants closest to the Academy will have precedence. Admission will then be on the basis of closest proximity to the school. This will be measured in a straight-line distance from the Ordnance Survey point of the child's home to the Academy's front gates, using the L A's computerised measuring system. In the event of a tie between two or more students when applying the admissions criteria, except in the case of multiple births, a process of random allocation will be applied. This will be executed by an independent person and will be witnessed by a second independent person.

Appeals

Parents or Carers who are dissatisfied with an admission decision have the right to appeal to an Independent Appeal Panel. The Independent Appeal Panel will be independent of the Academy Trust. The arrangements for appeals will comply with the School Admission Appeals Code published by the Department for Education as it applies to Academies. The determination of the appeal panel is binding on all parties. Parents or Carers who wish to appeal a decision should make their intention to appeal known to the Academy Admissions Officer in writing in order to receive instruction on beginning the appeal process. Appellants have 20 school days from the date of notification that the application was unsuccessful to prepare and lodge an appeal.

Please apply for places using the application link on the Sixth Form Admissions page of the academy website. This page also has details about entry requirements for specific subjects and a course guide. For details about open days, please see the

academy website. To speak with the Head of Sixth Form about admissions, please use the contact details below.

Contact Details

All Saints' Academy, Blaisdon Way, Cheltenham, Gloucestershire, GL1 0WH

Telephone: 01242 711200

Email: admin@asachelt.org

Website: www.asachelt.org

Archway School

Sixth Form Admission Criteria and Oversubscription Criteria: (Year 12 & Year 13)

Archway School has a successful Sixth Form, offering courses in a range of subjects, including both A Level and BTEC qualifications. In considering applications, the school's aim is to accept students onto courses on which they can be successful.

Method of Application

The prospectus forms are published in November 2024 and are available to all. They are specifically issued to members of Year 11 at Archway, visitors who attend the Sixth Form Information Evening, post-16 events held in other institutions and on request from the school. Applications can be made online on the school website (www.archwayschool.net). Applications should be submitted by the end of December. Information, advice and guidance meetings are set up for prospective sixth formers to provide expert professional support at a critical time of decision during February and March whereupon offers of places will follow.

Entry Requirements

Archway Sixth Form offers both A Level and L3 BTEC courses. For a full list of subjects offered please visit www.archwayschool.net

General entry requirements for all subjects, excluding those listed below - 5 GCSEs at grade 4 or above including English, Maths, and the subject to be studied (where relevant)

Biology, Chemistry and Physics - Grade 6 in the subject and one other Science or 6-6 in Combined Science, Grade 5 in Maths

English Literature- Grade 5 in English Literature and English Language

Maths - Grade 6 in Maths

Photography - Grade 4 in Art or submission of a portfolio of photography to the Head of Art

Psychology - Grade 5 in English, Maths and Science

Sociology - Grade 5 in English Language

Applications from students who are not members of Archway School - Each year students join our Sixth Form from other schools. Applications are welcomed from such students who wish to continue their studies at Archway. The entry requirements are identical for external applications as they are for internal and no distinction is made between candidates.

Archway School will offer a minimum of 50 places to external students.

In the unlikely event of Year 12 places being oversubscribed priority will be given as follows:

1. A 'looked after child' or a child who was previously looked after but immediately after being looked after became subject to an adoption, residence, or special guardianship order. A looked after child is a child who is (a) in the care of a local authority, or (b) being provided with accommodation by a local authority in the exercise of their social services functions (see the definition in section 22(1) of the Children Act 1989).
2. Children living in the priority catchment area normally served by the school, who will have siblings attending the school at the time the applicant child is admitted.
3. Children living in the priority catchment area normally served by the school.
4. Children who live outside the priority catchment area normally served by the school, who will have siblings attending the school at the time the applicant child is admitted.
5. Other children with the strongest geographical claim, measured in a straight line from the ordnance survey address point of the child's home address (including flats) to the ordnance survey address point of the school, using the Local Authority's computerised measuring system, with those living closer to the school receiving the higher priority.

Where any particular category at points 1-4 above is oversubscribed, criterion 5 (strongest geographical claim based on straight line distance) will be used to determine which child is offered a place.

Appeals

Parents and/or children who are not offered a place in the Sixth Form have the right to make an appeal.

Contact Details

Archway School, Paganhill, Stroud, Glos, GL5 4AX

Telephone: 01453 763242

Email: mattredman@archwayschool.net

Website: www.archwayschool.net

Balcarras School

Entry Criteria and Oversubscription Criteria

The purpose of our entry criteria is to ensure that students embarking on courses at A Level are academically able to complete the course and achieve satisfactory results. It is therefore sensible and necessary to specify that all examination grades submitted as part of the entry requirements are academically rigorous enough to ensure success.

There is no requirement on location. Provided the potential student can guarantee that s/he will arrive punctually each day and can safely make her/his way home after the end of school then s/he will be eligible to apply for a place in the sixth form. We welcome applications from students new, or returning, to the Cheltenham area.

Balcarras School hopes to welcome students who have a genuine enthusiasm to attend Balcarras Sixth Form, have a real passion for academic hard work and view Balcarras as their definite number one option for post 16 studies.

Balcarras School would like to positively encourage students to apply who currently attend a school without sixth form provision. We are determined to build on the excellent relationships and the firm commitment that exists between Balcarras Sixth Form and local schools.

Entry Criteria

The entry criteria for Balcarras Sixth Form are the same for Balcarras Students and for external students and are as follows:

Students must achieve at least 2 grade 6s and 3 grade 5s in full GCSE courses*.

Students must achieve a grade 5 or higher in GCSE Mathematics and English*. (Some subjects have additional entry criteria and for students applying for those subjects, the additional requirements are set out clearly in the sixth form brochure.)

Balcarras Sixth Form will aim to admit up to 50 external students (with a minimum of 10) from other schools into Year 12. 200 students will be admitted to Year 12 in total.

All applications must reach the school, fully completed, by February 5th on an official application form which can be downloaded from the school website.

** Where a student is studying courses other than full course GCSE, then the student must contact the school to discuss what standards will be required.*

Oversubscription Criteria

In the event that there are more than 50 applications from external students, then the applications will be given priority according to the following criteria:

1. Looked after children will have first priority
2. Students whose top 5 **predicted** full course GCSE scores* show a score above 32 (e.g. in new GCSE numbers 7,7,7,6,6 and in old GCSEs AAABB). The final grades **achieved** in the top 5 full course GCSEs must also be above 33.
3. Students applying for courses where the cohort size is predicted to be smaller than 12.
4. Students who have high predicted GCSE grades in the subjects they are applying to study at A Level.

If, after the above criteria have been applied, there are still more than 50 eligible applications, then priority will be given to students applying for courses where class sizes do not exceed 20.

** Where a student is studying courses other than full course GCSE, then the student must contact the school to discuss what standards will be required. The waiting list will only remain in use until September 30th. Students will be notified by official letter to their home address of the decision.*

Appeals

Any appeals must be made in writing to the Head of Sixth Form and must be received within 3 weeks of the decision letter being sent.

Students with qualifications other than GCSEs

Balcarras Sixth Form will consider some non-GCSE courses. However, not all courses will be sufficiently equivalent to provide the necessary academic grounding for the A Levels and study environment at Balcarras Sixth Form. For example, it is often not possible to directly compare foreign examinations grades with GCSE grades.

Offers will be made based on the examinations the student is due to take in the school he/she is studying and will be made on an individual basis. The offer will be the decision of Balcarras School and be broadly comparable, as far as is possible, to the equivalent GCSE requirements set out at the top of this document.

Note: Applicants who are studying courses other than GCSE are advised to check with the school on the suitability of their particular course(s).

Supplementary Application Form Required

Yes, please contact the school for further information.

Contact Details

Balcarras School, East End Road, Charlton Kings, Cheltenham, GL53 8QF

Telephone: 01242 545118

Email: cc@baltarras.gloucs.sch.uk

Website: www.baltarras.gloucs.sch.uk

Berkeley Green UTC

Post 16 Admissions Policy and Oversubscription Criteria

Berkeley Green UTC is a 14-19 school unlike any other in the area, with amazing resources and a 21st-century curriculum, specialising in Engineering, Digital Technologies and Cyber Security. We work with our many employer partners to help you develop the knowledge, skills, networks and personal qualities to secure your dream career, degree course or apprenticeship. We are based on the Gloucestershire Science and Technology Park in state-of-the-art facilities.

We have 3 Post 16 pathways:

- A. Full-time A Level study in STEM subjects.
- B. Full-time T Level qualifications in our specialisms.
- C. A hybrid course, where A Levels may be studied alongside technical qualifications.

Berkeley Green UTC manages its own admissions, and applications should be made directly to the UTC. Copies of the application form are available from the UTC Office or online at www.berkeleygreenutc.org.uk

Applications made by 31st December 2024 will be given priority, but we continue to accept applications throughout the academic year.

Every year, students join Berkeley Green UTC from a very wide range of other schools. The academic entry requirements for courses are identical for external and internal candidates.

Entry Criteria

All courses offered to Post 16 students at Berkeley Green UTC are at Level 3 and hence prospective students require a minimum of 5 standard GCSE passes. In addition, there are specific requirements for entry to Advanced Level Courses. For our A Level pathway, students must have at least 5 GCSE passes at grade 5 or above.

In the specific subjects they want to study at A Level, they must have a grade 6+ in that, or a related, subject (except for Further Maths which requires a 7+ in Maths). Every prospective student will have an initial application interview, and entry requirements will be explained then.

Entry Criteria for our hybrid pathway, which mixes A Levels with technical qualifications, will be dependent on subject combinations. They will be discussed during your initial application interview.

Oversubscription criteria

The UTC's admission number for external applications is 150 students in 2025. Our oversubscription criteria are as follows. Priority will be given in the following order:

1. Looked after children or children who were previously looked-after. A looked after child is a child who is (a) in the care of a local authority, or (b) being provided with accommodation by a local authority in the exercise of their social services functions (see the definition in Section 22(1) of the Children Act 1989).
2. Pupils who are progressing from Key Stage 4 at the UTC
3. A maximum of 60% of the places will be allocated to applicants who reside in the inner catchment area (once the first two criteria have been taken into consideration), which is defined as: b. Home address within 15 miles (straight line distance) of SGS Berkeley Green UTC
4. Places will be allocated randomly supervised by someone independent from the school. In the case of flats or multiple occupancy houses measurement will be taken from the main entrance of the building. If this results in a tie, places will be allocated randomly by a process overseen by someone independent of the school.

Appeals

Parents who are dissatisfied with the school's decision not to admit their child(ren) may appeal to an Independent Appeals Panel against that decision. The determination of the panel will be made in accordance with the School Admission Appeals and will be binding on all parties.

Appeals should be made, in writing, to the Clerk of the Independent Appeals Panel SGS Berkeley Green UTC (CO. SGS College, Stratford Rd, Stroud, GL5 4AH) within 20 school days from the date of notification that the application was unsuccessful.

Supplementary Application Form Required?

Please contact the UTC for further information

applications@berkeleygreenutc.org.uk or call the main office on 0800 4701516.

Contact Details

Berkely Green UTC, Gloucestershire Science & Technology Park, Berkeley,
Gloucestershire, GL13 9FB

Telephone: 0800 470 1516

Email: office@berkeleygreenutc.org.uk

Website: www.berkeleygreenutc.org.uk

Cheltenham Bournside School & Sixth Form Centre

Sixth Form Admissions Policy

We have 200 spaces in Year 12 at Cheltenham Bournside Sixth Form. The number of admissions into the Sixth Form from students not already at Bournside will be approximately 80 per year, however, this can be exceeded if the demand exists and facilities and resources allow.

An open evening is usually held in January, please contact the school or look at their website for further details. Sixth Form tours are available throughout the year. Please email sixthformadmissions@bournside.gloucs.sch.uk to organise.

Applications are welcomed online at www.bournside.gloucs.sch.uk/sixth-form

Entry Requirements

Cheltenham Bournside School offers over 35 A Levels, BTECs and Level 3 vocational courses and we invest a significant time in ensuring that students applying to our Sixth Form, both internally and externally, are well suited to their chosen subjects.

Our general entry requirements are:

- **Pathway 1:** Studying 3 or 4 A Levels - Entry criteria is at least a grade 4 in Mathematics and English Language or Literature and at least a grade 5 in your three/four chosen subjects at A Level.
- **Pathway 2:** Studying 3 BTEC / Level 3 vocational courses - Entry criteria is at least a grade 4 in Mathematics and English Language or Literature and at least a grade 4 in 3 related GCSEs.
- **Pathway 3:** Studying a combination of BTEC / level 3 vocational courses and A Levels - Entry criteria is at least a grade 4 in Mathematics and English Language or Literature and a bespoke offer of grade 4s and grade 5s at GCSE depending on examination results.

Applications are considered up to, but not beyond, two weeks of the start of term 1 of the academic year in which they are applying, unless exceptional circumstances apply.

Prospective applicants are encouraged to apply by the published application deadline at the end of February half term via our website:

www.bournside.gloucs.sch.uk/sixth-form. If the Sixth Form is oversubscribed, places will be offered according to the oversubscription criteria outlined below.

Oversubscription Criteria

If the Sixth Form is oversubscribed after GCSE results are known, places will be offered according to the oversubscription criteria:

Where applications for admission into Years 7-13 exceeds the number of places available, places will be offered in accordance with the following criteria, in the following order of priority.

1. Looked After Children/Previously Looked After Children definition A 'looked after child' (1) or a child who was previously looked after but immediately after being looked after became subject to an adoption (2) child arrangements order (residency order) (3) or special guardianship order (4) including those who appear to the admission authority to have been in state care outside of England and ceased to be in state care as a result of being adopted (5).
2. Children of permanent, salaried members of staff who (a) have been employed at the school for two or more years at the time at which the application for admission to the school is made or (b) have been recruited to fill a vacant post for which there is a demonstrable skill shortage.
3. Children living in the school's priority consideration area who have a sibling attending the school where the sibling is or has been a member of years 7, 8, 9, 10 or 11 and who will continue to be on the school roll when the applicant child is admitted. This criterion does not apply if the sibling has only attended years 12/13.

4. Children living in the school's priority consideration area with the strongest geographical claim, measured in a straight line from the Ordnance Survey Address Point of the child's home address (including flats) to the Ordnance Survey Address Point of the school, using the Local Authority's computerised measuring system, with those living closer to the school receiving the higher priority.
5. Children who live outside the school's priority consideration area who have a sibling attending the school where the sibling is or has been a member of years 7, 8,9, 10 or 11 and who will continue to be on the school roll when the applicant child is admitted. This criterion does not apply if the sibling has only attended years 12/13.

Other children with the strongest geographical claim, measured in a straight line from the Ordnance Survey Address Point of the child's home address (including flats) to the Ordnance Survey Address Point of the school, using the Local Authority's computerised measuring system, with those living closer to the school receiving the higher priority.

Transport

The school does not provide home to school transport, but transport bursaries can be applied for once a student has enrolled in our sixth form.

Appeals

Parents/carers whose application for a place at the school has been unsuccessful have the right of appeal to an Independent Appeal Panel. Appeals, which should be in writing, should be sent to the school for the attention of the Admissions Officer.

Appeals will be conducted in accordance with the Code of Practice for School Admissions Appeals. Parents/carers, whose appeals have been unsuccessful, may only apply for a further appeal in the same academic year if there has been a significant or material change in their circumstances.

Supplementary Application Form Required - Please apply online at
www.bournside.gloucs.sch.uk/sixth-form

Contact Details

Cheltenham Bournside School & Sixth Form Centre, Warden Hill Road, Cheltenham,
GL51 3EF

Telephone: 01242 235555

Email: sixthformadmissions@bournside.gloucs.sch.uk

Website: www.bournside.gloucs.sch.uk/sixth-form

Chipping Campden School

Sixth Form Admissions Policy and Oversubscription Criteria

Chipping Campden School offers a wide range of both A Level and Cambridge Technical qualifications. The agreed funding capacity for the Sixth Form is for a total of 350 students across Years 12 & 13. We expect to respond to the needs of those students who follow the application process and meet the entry requirements for their chosen courses. A sufficient number of places are available to provide for all Year 11 students already at the School, who wish to continue their Post-16 studies with us, subject to minimum entry requirements as detailed below.

We continue to welcome applicants from other schools who wish to undertake post-16 studies at Chipping Campden School, where places are available and subject to the same minimum entry requirements as detailed below.

A Sixth Form Open Evening is held annually, usually on the first Thursday in November. Details will be published on the school's website.

Entry Criteria

Students normally select three A Levels or Cambridge Technical qualifications, or a combination of the two, to study over their two years in Sixth Form. In exceptional cases, some students will be permitted to study four A Levels and any student wishing to do so should address their request to the Head of Sixth Form.

All students have the opportunity to complete an Extended Project Qualification (EPQ) and most students will be offered the opportunity to study Level 3 Mathematical Studies (Core Maths) in addition to their A Levels/Cambridge Technicals.

In order to study in the Sixth Form students must meet the entry requirements for their chosen subjects which are set out in the Sixth Form Prospectus, available on the school website. Any queries relating to entry criteria should be directed to the Head of Sixth Form.

For all course and combinations students must achieve a minimum Grade 4 for GCSE English and Maths.

A Level Courses

Students must achieve a minimum of five Grade 5s at GCSE. It is essential that English and Maths are two of the five.

Each subject will also have its own specific entry criteria which are detailed in the Sixth Form prospectus, available on the school website.

Cambridge Technicals - Students must achieve a minimum of five Grade 4s in five different subjects.

For each subject students will need a minimum Grade 4 at GCSE in that, or an associated subject.

Combined A Level/Cambridge Technicals

1. Students must achieve a minimum of five Grade 4 or 5s in five different subjects. This will be considered on a case by case basis.
2. For A Level subjects students wish to study they must meet specific entry criteria for that subject.
3. For Cambridge Technical subjects, students will need a minimum Grade 4 at GCSE in that, or an associated subject.

Oversubscription criteria

In the event that the sum total of internal and external applicants who fully meet the entry requirements at enrolment to Year 12 exceeds 175, then the following oversubscription criteria will apply to external applications.

1. Looked after children (1) or a child who was previously looked after but immediately after being looked after became subject to an adoption (2) child arrangements order (residency order) (3) or special guardian ship order (4)) including those who appear to the admission authority to have been in state care outside of England and cease to be in state care as a result of being adopted (5).

A 'looked after child' is a child who (a) is in the care of a local authority, or (b) being provided with accommodation by a local authority in the exercise of their social services functions (see the definition in Section 22(1) of the Children Act 1989) at the time of making an application to a school. In Gloucestershire, such children are referred to as Children in Care.

This includes children who were adopted under the Adoption Act 1976 (see section 12 adoption orders) and children who were adopted under the Adoption and Children's Act 2002 (see section 46 adoption orders).

Under the provisions of section 12 of the Children and Families Act 2014 which amend section 8 of the Children Act 1989, residence orders have now been replaced by child arrangements orders.

See Section 14A of the Children Act 1989 which defines a 'special guardianship order' as an order appointing one or more individuals to be a child's special guardian (or special guardians).

A child is regarded as having been in state care outside of England if they were in the care of or were accommodated by a public authority, a religious organisation, or any other provider of care whose sole or main purpose is to benefit society.

2. Students who have applied for subjects with smaller group sizes.
3. Chipping Campden School students.
4. External applicants according to their geographical distance from the school with priority to those living closest to the school. Geographical distance will be measured in a straight-line from the Ordnance Survey address point of the applicant's home to the Ordnance Survey address point of the school. Any tied situation will be overcome by lottery.

Appeals

Applicants, who are refused admission to the Sixth Form, or to individual subjects, are entitled to appeal. The appeal should be made in the first instance to the Head of Sixth Form. If the matter cannot be resolved, the matter will then be passed to an Independent Appeals Panel.

Supplementary Application Form Required?

Yes, please complete the online application form found here:

<https://sixthform.campden.school/>

Contact Details

Chipping Campden School, Cider Mill Lane, Chipping Campden, Gloucestershire,
GL55 6HU

Telephone: 01386 840216

Email: office@campden.school

Website: <https://sixthform.campden.school>

Chosen Hill School

Entry Criteria

Entitlement for Chosen Hill Year 11 students who meet the admission criteria plus approximately 80 external candidates. If all Year 11 required a place, the maximum Year 12 Sixth Form numbers would be in the region of 250 internal students and 60 externals.

The intake into Year 12 will be based upon applicants' ability to meet the entry requirements published annually in the Sixth Form Prospectus for their chosen course of study. Impartial guidance meetings will be held to provide all students with information and advice on course options and entry requirements. Details of individual course requirements are available from the Director of Sixth Form, in the Sixth Form Prospectus and on the Sixth Form pages of our website

<https://www.chosenhillschool.co.uk>

An Open Evening for potential Sixth Form Students is held in January each year when the new Sixth Form Prospectus, containing details of all courses offered, together with an online Application Form, is available

All applications should be received by end of January. Offers will be confirmed by late March. Late applications will be considered if the courses required, have space. We offer a range of highly personalised pathways through the Sixth Form, admitting students to study courses suited to their Key Stage 4 achievement. We offer a wide range of courses including A Levels and Level 3 Vocational Courses. Alongside these, we provide the opportunity to re-sit GCSE English or Maths to students without the minimum grade of a 4.

We have a suite of Extension Subjects that include EPQ, TAG, D of E and Core Maths. Students also benefit from additional supervised Directed Study sessions per subject.

Core Skills are developed in our Learning Mentor Programme and we have a dedicated PSHE slot in the timetable.

During the application process, students will select their chosen subjects in order of preference. After which and following our guidance meetings, we then produce the subject blocks making every effort to accommodate student choices in our timetabling. (We cannot guarantee all courses will run but will always give opportunity for individual discussion in guidance meetings).

The over-arching goal of our Admissions Policy continues to be the provision of study in a high-achieving, inclusive Sixth Form valuing all aspects of personal development.

Oversubscription criteria

In recent years we have received a steadily rising number of applications. When over-subscription occurs, we allocate places to students meeting the entry criteria as follows:

1. In all cases priority must be given to Children in Care who meet the entry requirements.
2. Priority is given to applications received before the closing date over late applications.
3. Where over-subscription occurs amongst applications submitted in time, we will allocate places to students with the strongest geographical claim, measured in a straight line from the ordnance survey address point of the student's home address (including flats) to the ordnance survey address point of the School (Main School Hall), using the Local Authority's computerised measuring system, with those living closer to the school receiving the higher priority. In the event of a tie-break of over-subscription criteria, e.g. exact distance from home address to school in more than one case, places will be offered to both applicants. Wherever possible, we would first look at possibilities allowing extra classes to be provided.
4. In all cases of over-subscription we are happy to provide extra support meetings if requested.

We aim to be both as inclusive as possible in our intake and to help every possible student find the best possible route to success in 16+ education or training.

In Year applications

We will always consider applications during either Year 12 or Year 13 for students requiring a transfer from another school or college. This is, of course, largely dependent upon matching exam boards and programmes of study. Any person interested in making an in-year application should contact the Director of Sixth Form for an initial guidance discussion.

Appeals

Applicants who do not get a place and wish to appeal against this decision should contact the Clerk to the Governors via the school (Telephone 01452 713488 or email)

Supplementary Application Form Required?

The full application form is online, including reference information request for students from other schools applying.

Contact Details

Chosen Hill School, Brookfield Road, Churchdown, Gloucester, GL3 2PL

Telephone: 01452 713488

Email: cb@chosen-hill.gloucs.sch.uk

Website: www.chosenhillschool.co.uk

Churchdown School Academy

Sixth Form Admissions Policy and Oversubscription Criteria

This Admissions Policy applies to all students seeking admission to Year 12 at Churchdown School.

Approximately 110 internal students continue with their studies in Churchdown School Sixth Form.

Entry Criteria - Admission to Year 12

Offers of places will be made on condition of students meeting the school entry requirements laid out below:

For Level 3 courses (A Level, or Level 3 Technical qualifications):

- Evidence of a positive, self-motivated approach to learning.
- A minimum of 5 GCSE and a grade 5 or above.
- A grade 4 in GCSE Maths and English.

Most A Level courses also have different pathway requirements for entry - these are outlined fully in the Admissions Guide and on the school website each year.

Each Pathway contains a range of different courses that ensure students are able to gain their preferred destination whether this is university, apprenticeship or the workplace.

Grade 7 Entry Requirements - A Level English, A Level Maths, A Level Languages, A Level Chemistry, A Level Physics, A Level Biology

Grade 6 entry requirements - A Level History, A Level Geography, A Level Fine Art, A Level Photography, A Level Music, A Level Business Studies, A Level Film, A Level Media, A Level Drama, A Level Design Technology/ Textiles, A Level Sociology (English), A Level Religious Studies, A Level Psychology (Maths and English)

General entry requirements - BTEC PE, BTEC Business, BTEC ICT, BTEC Applied Science, BTEC Travel, BTEC Applied Law, BTEC Media, BTEC Computing, BTEC Music

Conditional Placement - A Conditional placement is one that is reviewed at the end of Term 1. To continue on the course, the outcome of both of the reviews and assessments need to be positive. Subject teachers, and the Head of Year will contribute to the reviews that will be published to the student and their parents.

The Term 1 Reviews will assess:

- Progress and Attainment
- Attitude and Commitment
- Attendance and Punctuality
- Likelihood of gaining a Pass Grade at the end of Year 12

Admissions Process Year 12

Students applying for a place in year 12 will be invited to attend the Sixth Form Open Evening, an annual event at the school, held at a specified date in the Spring Term. Applications for Year 12 must be completed using the school application form, addressed to the Head of Sixth Form by the date specified by the school (check the website for details). Applications received after this deadline will be placed on a waiting list.

For internal applicants, the Head of Sixth Form will seek feedback from subject teachers and review internal reporting to check suitability for students' course choices. All offers of a place in Year 12 will be made on condition of students meeting the school entry requirements above.

For external applicants, predicted grades from their previous school will be sought to check suitability for A Level study on their preferred subject choices. A letter will be sent to the applicant confirming the decision made regarding a place in Year 12. All offers of a place in Year 12 will be made on condition of students meeting the school entry requirements above.

Students holding conditional offers will have their place confirmed following receipt of the GCSE results in the summer alongside the completion of any transition tasks.

Guidance will be given to students who wish to consider a change of subject following receipt of GCSE results during enrolment day.

Entry Criteria - Admission into Year 13

The majority of students in Year 12 continue with their studies into Year 13, dependent upon the entry criteria outlined below. All offers of a place in Year 13 will be made on condition that all students wishing to complete their advanced level studies in Year 13 must achieve a pass grade or better in each of their subjects examined in their Progression exams in the Summer of Year 12.

Admissions Process for Year 13

Following receipt Progression Exams, students who have met the entry requirements above are automatically offered a place in Year 13 to continue their studies.

Students who do not meet the entry requirement into Year 13 will be given guidance about a change of pathway and relevant courses available.

Oversubscription criteria

Where the number of applications for admission is greater than the number of places available, places will be offered in accordance with the following criteria. The criteria will be applied in the order set out below:

1. Students in public care (Looked after Children)
2. Students who have completed Year 11 at Churchdown School
3. Students with the strongest geographical claim, measured in a straight line from the ordnance survey point of the child's home address (including flats) to the ordnance survey point of the school, using the local authority's computerised measuring system, with those living closer to the school receiving the higher priority

In the event of a tie between two or more students when applying the above tie-break (strongest geographical claim based on straight line distance) where there are not enough places available to offer all students a place at the school, a process of random allocation will be carried out by the Governing Body.

Appeals

In the event of a place not being offered students and their parents have the right of appeal. Appeal Papers and Guidelines for their use are available from the school. An Independent Panel will be established in accordance with the Government regulations for Foundation Schools to hear all appeals.

Supplementary Application Form Required?

Yes, please contact the school for further information.

Contact Details

Churchdown School Academy, Winston Road, Churchdown, Glos, GL3 2RB

Telephone:01452 713340

Email: sixthforminfo@churchdownschool.com

Website: www.churchdownschool.com

Cleeve School

Sixth Form Admissions Policy and Oversubscription Criteria

The number of places available is flexible. We expect to be able to respond to need for those students who follow the application process. A sufficient number of places are available to provide for all Year 11 students already at the school, plus new entrants from other schools, up to a maximum of 400 places, across Year 12 and Year 13.

Entry Criteria

Students should select three or four A Levels or BTEC/National qualifications to study over their two years at Sixth Form. Please note that students can choose a combination of both types of qualification. In order to study in the Sixth Form, you need to meet the entry requirements for your chosen subjects. Entry requirements are set out in the enclosed inserts, and any queries relating to them should be addressed to the Assistant Head: KS 5 – ayf@cleeveschool.net

For all courses and combinations you must achieve a minimum Grade 4 for GCSE English and Mathematics, however if you achieve all subject entry criteria for your subjects but do not pass one of English/Maths, you will be allowed to join and entered for a GCSE retake.

A - Level Courses - You must achieve a minimum of four Grade 5s and one Grade 4 at GCSE. Each subject will also hold their own specific entry criteria with regard to GCSE performance in their subject (or related subject).

BTECs/Nationals - You must achieve a minimum of four Grade 4s at GCSE in four different subjects.

For all subjects you wish to study at BTEC/National, a minimum Grade 4 must be achieved in that, or an associated subject.

Combined A- Level and BTEC/National Courses - You must achieve a minimum of four Grade 4s at GCSE in four different subjects. For each A-Level subject you wish to study, you must also meet their own specific entry criteria with regard to GCSE

performance in their subject. For all subjects you wish to study at BTEC/National, a minimum Grade 4 must be achieved in that, or an associated subject.

Oversubscription criteria

In the unlikely event of the sixth form being oversubscribed for external applicants, we will give priority to applicants as follows:

1) An applicant defined as a 'Looked After Child' A looked after child is a child who is (a) in the

care of a local authority, or (b) being provided with accommodation by a local authority in the exercise of their social services functions (see the definition in section 22(1) of the Children Act 1989).

2) Other applicants according to their geographical distance from the school, with priority to those living closest to the school. Geographical distance will be measured in a straight line from the Ordnance Survey address point of the child's home address (including flats) to the Ordnance Survey address point of the school.

Appeals

Applicants who are refused admission to our sixth form are entitled to appeal to an independent appeals panel. Applicants should contact the school office for an appeals form and forms should be returned by September 1st to Chair of Trustees, Cleeve School, Two Hedges Road, Bishops Cleeve, Cheltenham, GL52 8AE.

Supplementary Application Form Required? Yes, please contact the school for further information or the Schools Website <http://www.cleeveschool.net/>

Contact Details

Cleeve School, Two Hedges Road, Bishops Cleeve, Cheltenham, GL52 8AE

Telephone: 01242 672546

Email: sixthform@cleeveschool.net

Website: www.cleeveschool.net

Dene Magna School

Sixth Form Admission Criteria and Oversubscription Criteria

Dene Magna Sixth Form offers a wide range of A Levels to students who have the passion, ambition and ability to pursue their academic education further. Applications are welcomed from candidates who have completed their GCSEs at another school and both external and internal applications will be considered against the same entry criteria. The number of places available is 125 per year, 250 in total and we aim to accommodate all those who follow the application process and meet the entry criteria.

Method of Application

Application can be made directly to the school using the form provided on the school's website; the closing date for applications is advertised in our prospectus and on the website.

Entry Requirements

Both internal and external students wishing to enter the sixth form will be expected to have met the same minimum academic entry requirements of 5 GCSEs at grade 5 or above, including English (Language or literature) and Maths. Applicants should achieve a minimum GCSE grade 6 or above in the subject they wish to study at A Level and subject specific requirements can be found on the school's website.

Pathway Prior Attainment Options

A Level Pathway - All students study a minimum of three A Levels with some students opting to study four (subject to confirmed GCSE grades). Students who wish to consider a pathway which includes fewer than three A Levels can only do so following consultation with the admissions team.

Oversubscription

Dene Magna aims to accommodate all students who apply and fulfil the entry requirements and up to 125 places are available. In the case of oversubscription, we would encourage prospective students to contact the school directly.

When there are more external applicants that satisfy any academic entry requirements, the same over subscription criteria will be applied as published in our admissions policy which can be found on our website.

Appeals

Our appeals process can be found on our website, where advice is given on the procedure to follow.

Contact Details

Dene Magna School, Abenhall Road, Mitcheldean, Gloucestershire, GL17 0DU

Telephone: 01594 838549 (Sixth Form)

Email: reception@denemagna.gloucs.sch.uk

Website: www.denemagna.gloucs.sch.uk

Farmor's School

Sixth Form Admissions Policy and Oversubscription Criteria

Farmor's is a highly successful Sixth Form which welcomes approximately 20% of its intake each year from external and international students. We offer 27 academic courses as well as a wide range of enrichment opportunities and trips.

Principles

Farmor's has 150 places in its Sixth Form in each year. Applications are welcome from all prospective students regardless of whether they have attended Farmor's School prior to the Sixth Form.

Method Of Application

Applications for a place in the Sixth Form are to be made on the Sixth Form electronic application form found online. The prospectus and application forms are published in September of the year preceding the year of entry to the Sixth Form. Please see website for details of our opening evening (Sept/October). Details on how to apply electronically via the online submission system can be found on the website or by clicking this link: <http://www.farmors.gloucs.sch.uk/Sixth-Form-How-to-apply>. If you have any issues you can contact the schools Sixth Form Administrator, Clare Orgill on 01285 712302 option 3 or sixthformadmin@farmors.gloucs.sch.uk. The normal deadline for application will be published in the prospectus for each academic year (available on the website). We will consider later applications from students who meet entry criteria, if places are available and if we are confident that the applicant will, as a result of any time lost in the year, be able to catch up successfully.

Entry requirements

The School's aim is to accept students onto courses they can be successful in pursuing. In making this judgement, Farmor's will look for an appropriate level of prior academic achievement in appropriate subjects and in accordance with the principles of this policy.

Farmor's requires five GCSE passes at grades 9-4 (including English and Mathematics at grade 4.) Additionally, applicants must have grades 4 and above in

the subjects they are wishing to study at AS and A Level. See the prospectus for details of individual subject entry requirements.

All applicants have a one-to-one discussion with a senior member of Sixth Form staff to ensure they are applying for courses they can realistically be successful in. However, this discussion does not form part of the decision making process on the part of the school on whether to offer a place. All applicants are offered a taster day so they may evaluate whether Farmor's Sixth Form is a place where they could study successfully and to assess whether their chosen courses are suitable.

Admissions priority

Where the number of applications do not exceed the number of places available all applicants that meet the entry criteria must be offered a place at Farmor's Sixth Form.

Where the number of applications that meet the entry criteria exceed the number of places available the following criteria, in the order set out below, will be applied to decide which applicants to accept:

1. Applicants who qualify as a looked after child and all previously looked after children who are children who were looked after, but ceased to be so because they were adopted (or became subject to a child arrangements order or special guardianship order).
2. Applicants who will have siblings at Farmor's at the time of admission. The definition of a sibling is: "a brother or sister, half-brother or sister, adopted brother or sister, step brother or sister, or the child of the parent's/carer's partner, and in every case, the child must be living in the same family unit at the same address".
3. Applicants who have an authenticated medical reason for attending Farmor's. Consideration under this category must be supported by a written statement from the applicant's doctor and which must show a very specific connection between the medical need of the applicant and the facilities or resources at Farmor's.
4. Applicants on the roll at Farmor's at the end of Year 11.
5. Applicants who are the children of staff at the school. A child is considered to fall under this criterion where the member of staff has been employed at the school for two or more years at the time at which the application for admission to the school is made, and/or the member of staff is recruited to fill a vacant post for which there is a demonstrable skill shortage.

6. Applicants with the strongest geographical claim - Random allocation will be used as a tie-break in category 6 above to decide who has highest priority for admission if the distance between two applicants' homes and the school is the same. This process will be independently verified.

Special Educational Needs and Educational Healthcare Plan

The school is required to admit a child with a statement of Special Educational Needs or Educational Healthcare Plan who is named by the local authority, even if the Sixth Form is full.

Appeals

Applicants refused admission are entitled to appeal to an independent appeals panel. Details of the appeal process are available from the school on request.

Contact Details

Farmor's School, The Park, Leafield Road, Fairford, Gloucestershire, GL7 4JQ

Telephone: 01285 712302

Email: sixthformadmin@farmors.gloucs.sch.uk

Website: www.farmors.gloucs.sch.uk

Henley Bank High School

Sixth Form Admissions Policy

The school will be offering 100 places in Year 12 for 2025/2026. The school will offer a minimum of 25 places to external candidates. The entry requirements are identical for external candidates as they are for internal and no distinction is made between candidates.

Entry Requirements

Places in the post-16 provision will be offered to existing school students first. If the school is oversubscribed by internal pupils, the oversubscription criteria of the school will apply. Where the school is oversubscribed as a result of external candidates, the school will admit all external pupils with a statement of Special Education Need naming the school and the oversubscription criteria of the school will be applied.

If you come to the Sixth Form you would usually do:

Level 3 courses in three A Level subjects

The entry requirement for this is 5 grade 5+ GCSEs (including Maths and English Literature or Language)

As part of the process of applying to join the Sixth Form you will be asked to attend an interview to discuss the suitability of your chosen courses.

You will need to read the subject details in the prospectus carefully and consider the recommended GCSE grades required to take an A level in a particular subject.

It is also important that you talk to subject teachers at the Sixth Form Open Evening or at the School and Year 12 students who are currently studying the courses to help you in your decision making.

What are the possible routes?

Your guidance meeting and discussions with subject staff and current students will provide you with ideas about possible combinations of subjects and the most suitable subjects for you.

Some subjects require a specific grade, please see the prospectus for full details.

These criteria for admission have been thought through and developed very carefully in the best interests of our students. This is a sensitive area and students are strongly advised to have a back up plan in case they do not achieve the minimum requirements for their subject. This will be discussed during the interview.

Supplementary Application Form Required?

No

Contact Details

Henley Bank High School, Mill Lane, Brockworth, Gloucester, GL3 4QF

Telephone: 01452 863372

Email: admin@henleybankhighschool.co.uk

Website: <https://www.henleybankhighschool.co.uk/>

Holmleigh Park High School

Sixth Form Admissions Policy

The School will be offering 170 places in Year 12 for 2025/26. The School will offer a minimum of 50 places to external candidates. The entry requirements are identical for external applicants as they are for internal and no distinction is made between candidates.

Entry Requirements

Places in the post-16 provision will be offered to existing School students first. If the School is oversubscribed by internal pupils, then the oversubscription criteria of the School will apply. Where the School is oversubscribed as a result of external candidates, the School will admit all external pupils with a statement of Special Educational Need naming the School and the oversubscription criteria of the School will be applied.

If you come to the Sixth Form you would usually do either:

- Level 3 courses in three A Level subjects
- The entry requirement for this is 6 grade 5-9 GCSEs (including Maths and English)
- Level 3 courses in one Extended Diploma

The entry requirement for this is 5 grade 1-9 GCSEs (including Maths or English)

The key consideration in deciding which level of course to embark upon is to ensure that you are in a position to achieve success on your chosen route.

As part of the process of applying to join the Sixth Form you will be asked to attend a guidance meeting to discuss the suitability of your chosen courses.

You will need to read the subject details in the prospectus carefully and consider the recommended GCSE grades required to take an A Level or BTEC Level 3 course in a particular subject.

It is also important that you talk to subject teachers at the Sixth Form Open Evening or at the School and Year 12 students who are currently studying the courses to help you in your decision making.

What are the possible routes?

Your guidance meeting and discussions with subject staff and current students will provide you with ideas about possible combinations of subjects and the most suitable level of study for you. The most common combinations depending on your GCSE grades are:

- 5 grades 6-9* at GCSE leading to 3 A Levels
- 5 grades 5-9* at GCSE leading to BTEC Level 3 Extended Diploma. All students not attaining grade 4 or above in GCSE English and Maths will need to resit these qualifications during their sixth form studies.

Some subjects require a specific grade, please see the prospectus for full details. These criteria for admission have been thought through and developed very carefully in the best interests of our students. This is a sensitive area and students are strongly advised to have a 'back up' plan in case they do not achieve the minimum requirements for their chosen route. This will be discussed during the guidance meeting.

Supplementary Application Form Required?

No

Contact Details

Holmleigh Park High School, Holmleigh Park, Tuffley, Gloucester, GL4 0RT

Telephone: 01452 301381

Email: office@hphigh.co.uk

Website: <https://www.hphigh.co.uk/>

Katharine Lady Berkeley's School

Sixth Form Admissions Policy and Oversubscription Criteria

There is no fixed admission number for Year 12 as it is not a normal point of entry to the school. However, applications from students who wish to join from other schools are welcome and will be judged against the same criteria concerning the suitability for our courses as are applied to students moving from Year 11 at this school. Based on patterns of application in previous years, we make provision for approximately 10 students to join the school at the start of Year 12 although more can be admitted if the staffing and other resources required are available.

Application for admission to the school in Year 12 from pupils who have not attended or do not attend this school in Year 11 should be made by completing a school admission form available on the school website.

Entry Criteria

To join the sixth form a student must have achieved at least 3 passes at Grade 5 and 2 passes at Grade 4

In addition, candidates must also be able to follow a programme of study including at least three full A Level courses in line with the entry requirements for individual courses as detailed for each subject in the school's sixth form prospectus.

Oversubscription criteria

A maximum of 50 places will be offered to external candidates. In the unlikely event that the school receives more applications than can be accommodated in Year 12 from students who meet our criteria concerning suitability for our courses, the following oversubscription criteria will be used:

- 1) Looked After Children or children who were previously looked after but immediately after being looked after became subject to adoption, residence, or special guardianship order. ⁽²⁾
- 2) Students who have attended this school as Year 11 pupils.
- 3) Pupils who have siblings ⁽³⁾ who will be registered at the school on the first day of the term in September when the applicant would start in Year 12.

4) Pupils living in the parishes ⁽⁴⁾ of Wotton-under-Edge, North Nibley, Ozleworth, Kingscote, Alderley, Hillesley and Tresham, Hawkesbury, Kingswood, Wickwar, Charfield, Cromhall, Tortworth, Falfield, Stinchcombe, Alkington, Ham and Stone, Berkeley, Hinton and Hamfallow.

5) Applications which do not fall into the above criteria will be selected according to the proximity (5) of the pupil's home address to the school.

Where the number of applications exceeds the school's capacity, students who are not offered places initially will have the opportunity to place their application on a waiting list. The waiting list will be maintained for at least one term in the academic year of admission, i.e. until 31 December in Year 12 following an application for admission at the start of September. If a place in the year group becomes vacant, students on the waiting list will be offered places in the order defined by the above over-subscription criteria. Priority is not given based on the date that the application for admission is received. Therefore, for example, if a student moves to a location near to the school after the normal admissions process has been completed and they have a higher priority based on the above criteria, they will be ranked above those with lower priority already on the list.

(2) Looked After Children/Previously Looked After Definition

A 'looked after child' (a) or a child who was previously looked after but immediately after being looked after became subject to an adoption (b) child arrangements order (residency order) (c) or special guardianship order (d) including those who appear to the admission authority to have been in state care outside of England and ceased to be in state care as a result of being adopted (e)

(a) A 'looked after child' is a child who is in the care of a local authority, or being provided with accommodation by a local authority in the exercise of their social services functions (see the definition in Section 22(1) of the Children Act 1989) at the time of making an application to a school. In Gloucestershire, such children are referred to as Children in Care.

(b) This includes children who were adopted under the Adoption Act 1976 (see Section 12 adoption orders) and children who were adopted under the Adoption and Children's Act 2002 (see section 46 adoption orders).

(c) Under the provisions of Section 12 of the Children and Families Act 2014.

(d) See Section 14A of the Children Act 1989 which defines a 'special guardianship order' as an order appointing one or more individuals to be a child's special guardian (or special guardians).

(e) A child is regarded as having been in state care outside of England if they were in the care of or were accommodated by a public authority, a religious organisation, or any other provider of care whose sole or main purpose is to benefit society.

(3) We define siblings as children who share at least one parent and are living together in the same household on a permanent basis. Section 576 of the 1995 Education Act defines 'parent' to include:

all natural parents, whether they are married or not; and any person who, although not a natural parent, has parental responsibility for a child or young person; and any person who, although not a natural parent, has care of a child or young person

(4) The parish boundaries used are those for civil parishes as shown on Ordnance Survey maps. Copies of maps showing these areas are available, on request, from the school.

(5) Proximity to the school will be measured by a straight line from the school to the pupil's home using the Ordnance Survey Address Point data.

Appeals

Appeals against decisions on admissions to Years 7 to 13 may be made on application to an independent Appeals Committee. Details of the name and address of the clerk to the appeals committee may be obtained from the Admissions Secretary at the school and full details of the appeal procedure will be sent free on request.

For admission to Year 12 or 13, a prospective student may make their own appeal in addition to or instead of an appeal by the student's parents.

The Appeals Committee will normally meet between 15 and 30 May to consider appeals for September admission but may meet as and when necessary to consider appeals on admissions at other times.

Appeals are conducted in accordance with the DfE Regulations as to the holding of appeals on Admissions.

Supplementary Application Form Required?

Yes, please contact the school for further information.

Contact Details

Katherine Lady Berkeley's School, Kingswood Road, Wotton under Edge,
Gloucestershire, GL12 8RB

Telephone: 01453 842227

Email: info@klbschool.org.uk

Website: www.klbschool.org.uk

Marling School

Year 12 admissions

The Sixth Form at Marling School is co-educational and open to students from Marling School and other schools; we admit boys and girls. Applications for Year 12 should be completed by the published deadline on the application form. Please refer to the Marling Sixth Form's website www.marlingsixthform.org for full details of the admissions process and the application form. Students receive a conditional offer in April of the calendar year of admission on the basis of the predicted GCSE grades. Conditional places will be confirmed following the GCSE results day in August each year at which time applicants complete the registration process with Sixth Form staff.

Capacity

The maximum Year 12 cohort of Marling School is 200. The Admissions Panel may admit above this figure in exceptional circumstances and where it believes no prejudice will ensue. All Year 11 Marling School students who meet the published academic entry requirements can expect to be allocated a place in the Sixth Form, as well as a **minimum** planned admission number of 50 external candidates.

Academic entry requirements

All applicants will need to meet all of the following requirements for entry into Marling School Sixth Form⁶:

Applicants should achieve a minimum of 38 'points' across their best 6 GCSE grades in separate subjects. The two grades awarded for Combined Science count as separate subjects. Short course GCSEs do not count towards the full course GCSE requirements. (In reformed GCSEs the numerical grade will be used as the point score. Where a GCSE or equivalent still has a letter grade the following score will be used in line with DfE equivalence: A*=8.5, A=7, B=5.5, C=4, D=3, E=2, F=1.5, G=1)

Applicants should have a minimum of Grade 5 in both English Language and Mathematics (see below).

Applicants should meet individual subject requirements in their chosen subjects if previously taken at GCSE level, or a relevant subject as specified in the Sixth Form prospectus.

Applicants will normally choose no more than 2 new subjects to study in Year 12. Applicants with insufficient formal GCSE qualifications but with demonstrable equivalent qualifications, including International Baccalaureate and IGCSEs will be considered by the Marling School Sixth Form Leadership Panel, who will be guided by points' equivalence and evidence of prior learning.

Where external applicants have an Education, Health and Care Plan (EHP), they are required to meet the minimum academic entry requirements in order to be admitted and for Marling School to be named on the plan. In that event, they will have priority over all other external applicants and the admission number will be reduced accordingly. For internal applicants with an education, health and care plan (EHP), in order to continue their studies at Marling School they will be required to meet the minimum academic entry requirements.

Applicants who have missed the entry criteria may request consideration for a place by the Marling School Sixth Form Leadership Team Panel who may accept or reject applications. This may include, but is not limited to, those applicants who narrowly missed the Sixth Form entry criteria by virtue of their English and Mathematics grade.

Applicants who have missed the entry criteria and have been in receipt of Pupil Premium funding⁷ during their secondary school education may request consideration for a place by the Pupil Premium Review Group. A place may be offered to any applicants that the group consider will be able to access an A Level curriculum, with the programme of study adjusted as necessary to suit individual circumstances.

Applicants continuing from Year 11 at Marling School

Applicants progressing into the Sixth Form from Year 11 of Marling School who achieve the academic entry requirements will be offered a place in the Sixth Form. Applicants should contact the school by 4pm on GCSE results day if they wish to accept a place.

Applicants joining the school for the first time (“external applicants”)

We welcome applications from new candidates. Following submission of an application form, applicants will be invited to an advisory discussion. Conditional places will be offered and applicants should contact the school by 4pm on GCSE results day if they wish to accept a place and submit their GCSE results.

Allocation of Places

Immediately after the published deadline for applications we calculate the number of students who have applied for each subject. The number of groups for each of these subjects is then determined, to ensure reasonable class sizes. If in August/September a subject area is full but places still exist in the Sixth Form overall, prospective students will be offered suitable alternative courses if they meet the entry requirements of those subject areas **(an offer of admission is to the Sixth Form: it is not a guarantee of a particular course of study).**

Oversubscription criteria for external applicants

If there are more external applicants than can be offered places, the following additional criteria in this order will be applied to candidates that have met the entry requirements:

1. Any 'looked after child'⁸ or child who was previously looked after but immediately after being looked after became subject to an adoption, child arrangements, or special guardianship order including those who appear to the admission authority to have been in state care outside of England and ceased to be in state care as a result of being adopted.
2. Any candidate attracting Pupil Premium funding⁷ during their secondary school education.
3. Applicants with the highest average GCSE grade 'score' in their best six separate full course subjects (see Section 3 above)

In the event of a tie break between two or more applicants when applying the above criteria, a process of random allocation will be followed by the Governing Body, which will be supervised by someone independent of the school.

There is a system of appeals against non-admission (Section 11).

Waiting List

In the event that the external applicant reaches the required academic standard but there are no places available in the relevant Year 12, they will be placed on a Waiting List. The order of this list will conform to the oversubscription criteria as listed above (Section 7). If the number of students falls below the maximum Year 12 cohort number those on the list will be offered places (Section 5), in accordance with the oversubscription criteria. The Waiting List for Year 12 will be held until 31st December. Students from Year 11 of Marling School who left but then wish to return will be treated as new applicants (see 9 below).

Sixth Form transfer

New applicants who wish to transfer into Year 12 or 13 should in the first instance make contact with the Head of Sixth Form.

Appeals

There is a system of appeals against non-admission, and details of how to appeal are available from the school.

Complaints - If a parent/carer considers the appeal was not carried out in compliance with the School Admissions Code and School Appeals Code, an objection can be made to the Education and Skills Funding Agency. Details can be found on the Gov.uk website under School Admission Appeals.

All admissions authorities must determine their admission arrangements by 28 February every year. If parents/carers think that the admission arrangements do not comply with the School Admissions Code or other legislation relating to school admissions, they may contact the Office of the Schools Adjudicator by 15 May in that same year.

Contact Details

Marling School, Cainscross Road, Stroud, Gloucestershire, GL5 4HE

Telephone: 01453 762251

Email: info@marlingsixthform.org

Website: www.marlingsixthform.org

Footnote

6 A place at Marling School Sixth Form will be withdrawn if it is offered in error or if it is established that the offer was obtained through a fraudulent or intentionally misleading application.

⁷ **Independent and verifiable evidence of Pupil Premium entitlement** in the requisite period will need to be provided at the time of application. The school may make such enquiries as are necessary of the previous school or GCC (or the relevant Local Authority) as to the entitlement of any candidates. This criterion is applicable to Pupil Premium only and not Service Premium entitlement.

⁸ **A looked after child is a child** who is (a) in the care of a local authority, or (b) being provided with accommodation by a local authority in the exercise of their social services functions (see the definition in Section 22(1) of the Children Act 1989). An adoption order is an order under the Adoption Act 1976 (see Section 12 adoption orders) and children who were adopted under the Adoption and Children Act 2002 (see Section 46 adoption orders). A 'child arrangements order' is an order settling the arrangements to be made as to the person with whom the child is to live under Section 8 of the Children Act 1989 as amended by Section 14 of the Children and Families Act 2014. Section 14A of the Children Act 1989 defines a 'special guardianship order' as an order appointing one or more individuals to be a child's special guardian (or special guardians). Supporting documentation for a looked after child must be submitted to the school prior to sitting the test.

Newent Community School and Sixth Form Centre

Sixth Form Admission Policy

To be considered on Level 3 courses students, in most cases, are expected to achieve 30 points from their top 6 subjects. Maths, English and Science subjects will also have specific entry requirements, based on the demands of the particular course. The entry requirements are the same for internal and external applicants. Newent Community School and Sixth Form Centre has no cap on external applications.

Applications from External Students

We welcome applications from external students. The entry requirements are the same for internal and external applicants.

Entry Requirements and Programmes of Study

Entry requirements vary according to the courses being studied. For students studying a 2 year pathway (Level 3 courses) the above criteria applies.

We offer courses in a number of academic and vocational areas including Cambridge Technical ICT Level 3 and A Level Computer Science. Students who do not achieve a level 4 in English or Maths at GCSE must be committed to re-sitting them.

Most students will study 3 subjects over the 2 year programme. We also offer all students the opportunity to complete the AQA Level 3 Extended Project Qualification at AS level and have a variety of extra-curricular activities offered, including the Duke of Edinburgh Award.

Oversubscription Criteria

Where applications for admission exceed the number of places available, the following criteria will be applied, in the order set out below, to decide which children to admit.

- a. Looked After Children/Previously Looked After Children Definition A 'looked after child' (1) or a child who was previously looked after but immediately after being looked after became subject to an adoption(2) child

arrangements order (residency order) (3) or special guardianship order (4) including those who appear to the admission authority to have been in state care outside of England and ceased to be in state care as a result of being adopted (5).

b. Children living in the priority catchment (5) area normally served by the school, who will have siblings (6) registered at the start of the term in September when the applicant would start year 7.

c. Children living in the priority catchment (5) area normally served by the school with the strongest geographical claim, measured in a direct line (7)

d. Children for whom only one particular school is appropriate due to an exceptional medical condition. Applications under this criterion will only be considered if they are supported by a written statement from the child's doctor. This must demonstrate that there is a very specific connection between the medical need and the facilities or resources of the school concerned.

e. Children who live outside the priority catchment area normally served by the school, who will have siblings attending the school when the younger child is admitted. (6)

f. Children who live outside the priority catchment area normally served by the school with the strongest geographical claim, measured in a direct line.

Notes:

A 'looked after child' is a child who is (a) in the care of a local authority, or (b) being provided with accommodation by a local authority in the exercise of their social services functions (see the definition in Section 22(1) of the Children Act 1989) at the time of making an application to a school. In Gloucestershire, such children are referred to as Children in Care.

This includes children who were adopted under the Adoption Act 1976 (see section 12 adoption orders) and children who were adopted under the Adoption and Children's Act 2002 (see section 46 adoption orders).

Under the provisions of s.12 of the Children and Families Act 2014.

See Section 14A of the Children Act 1989 which defines a 'special guardianship order' as an order appointing one or more individuals to be a child's special guardian (or special guardians).

A child is regarded as having been in state care outside of England if they were in the care of or were accommodated by a public authority, a religious organisation, or any other provider of care whose sole or main purpose is to benefit society.

A map of the catchment area is available on request from the school

A sibling is a brother or sister, half-brother or sister, adopted brother or sister, step-brother or sister, or the child of the parent's/carer's partner, and in every case, the child must be living in the same family unit at the same address. Section 576 of the 1995 Education Act defines 'parent' to include; all natural parents, whether they are married or not; any person who, although not a natural parent, has parental responsibility for a child or young person; any person who, although not a natural parent, has care of a child or young person

Where any particular category at criteria is oversubscribed, criterion (strongest geographical claim based on straight line distance) will be used to determine which child will be offered a place.

In the event of a tie between two or more children when applying criterion 6 the strongest geographical claim [Strongest geographical claim [based on straight line distance - measured in a straight line from the ordnance survey point of the child's home address (including flats) to a central point of the school, using the Local Authority's computerised measuring system] with those living closer to the school receiving the higher priority. Where there are not enough places available to offer all such children.

Contact Details

Newent Community School and Sixth Form Centre, Watery Lane, Newent,
Gloucestershire, GL18 1QF

Telephone: 01531 820550

Email: admin@newent.gloucs.sch.uk

Website: www.newent.gloucs.sch.uk

Pate's Grammar School

Sixth Form Admissions Policy

We welcome applications from both internal and external students who wish to join the Pate's Sixth Form for their post-16 education.

The minimum qualifying academic requirements apply equally to both internal and external applicants.

Admissions Number

The school offers a minimum of 220 places for entry into the Sixth Form each year. In a typical year about 140 internal students will qualify to enter the Sixth Form, leaving a minimum of 80 further places for external students. The Admissions Number may be exceeded if that enables Pate's to improve the viability of projected teaching group sizes in minority subjects (i.e. to preserve a broad curriculum and for reasons of efficiency) and if it means that the number of students attracting PP/LAC/PLAC can be increased.

Admissions Process

All applicants must complete the relevant application form, available from the Pate's Sixth Form website, and submit it in time to meet the published deadline. Late applications may be considered if circumstances permit. Provisional offers will be made by the end of April each year to those meeting the admissions criteria laid out below, and places are then confirmed on results day in August.

Internal applicants will be notified on GCSE results day whether or not they have a confirmed Sixth Form place.

External applicants who hold a conditional offer should contact Pate's on the morning of Results Day, to notify their grades and confirm that they are still interested in taking up a place. Provided they have met the entry criteria set out in their offer email, a place can usually be confirmed immediately.

There is the right of appeal to an independent appeals panel if a Sixth Form place is not offered. The Pate's Sixth Form Admissions Manager can provide all relevant information and guidance, on request.

Entry Criteria

For admission to Pate's Sixth Form, each student must have as a minimum:

A total 'points' score of 57 or more across their best 8 GCSE grades* which matches or exceeds the minimum published in the relevant Sixth Form Prospectus. In Mathematics and English a minimum score of 5 in both subjects is required;

Further, the school will require:

- predicted GCSE grade of at least 7 in any subject to be studied at A Level, as specified in the Sixth Form Prospectus.

In the case of any GCSEs and IGCSEs which retain the old A-C grading system, the following points values apply: A=8.5 A=7 B=5.5, C=4.

Oversubscription criteria

In the event of oversubscription (i.e. in most years) offers will be made to external applicants on the basis of a combination of the following criteria:

- The extent to which predicted GCSE grade outcomes (as assessed by the Pate's team, taking into account academic information available at the point of application) exceed the minimum entry requirement; and
- Each student's individual circumstances, including eligibility for Pupil Premium. Priority will be given, where the school is oversubscribed, to Pupil Premium and Looked After Children who meet the academic entry criteria (see p.8 of Admissions Policy available on website for full definition).

These criteria are used to identify those applicants who would qualify for consideration for a Sixth Form place. These students may be invited for a personal discussion with a senior member of Pate's staff. That discussion will not form part of the admissions process but is intended to help the student ensure they are making a properly informed choice about the right school and subjects for them.

Other Information

For details of the A Level courses we run and to view our prospectus please visit www.patesgs.org/sixth-form

We hold a Sixth Form Open Day in the Spring term each year, details of which will be added to our website in the Autumn Term.

We have many extra-curricular opportunities available including DofE, Societies, Committees and Sports teams.

An online application form will be available from the Sixth Form section of the school website from January 2025. Alternatively, please contact Pate's Sixth Form office on (01242) 538233 or sixthformadmisssions@patesgs.org

Contact Details

Pate's Grammar School. Princess Elizabeth Way, Cheltenham, Gloucestershire, GL51 0HG

Telephone: 01242 538233 (Sixth Form Admissions)

Email: sixthformadmisssions@patesgs.org

Website: www.patesgs.org

Rednock School

Sixth Form Admissions Policy and Oversubscription Criteria

Rednock School has a highly successful Sixth Form and offers A Level Courses and other Level 3 courses (including BTEC) in a wide range of subjects. In considering applications, the school's aim is to accept students onto courses in which they can be successful. Evidence for making this judgement has to be an appropriate level of prior academic achievement as well as an interest in the chosen subjects and a desire to study them in greater depth.

The Prospectus and Course Information Booklets are published in the Autumn term preceding entry and are available to all. Applications are accepted after the Sixth Form Open Evening (see website for details).

Entry Criteria

To begin an A Level or Level 3 BTEC course you will normally need a minimum of five GCSEs at grades 4-9 (or equivalent) including English and Maths as well as at least grade 5 (or equivalent) in the subjects you wish to study (see Course Information Booklet for more details about individual subject requirements).

Sixth Form staff will have information about summer GCSE results and will use this to make final guidance on courses. Discretion over pathways and exact courses will rest with the professional judgement of the Sixth Form Team and the Senior Leadership Team. Any challenge to entry will be resolved by the Senior Leadership Team member with responsibility for oversight of the Sixth Form, Deputy Head Teacher or Head Teacher by no later than the 1st September 2025.

Applications from students who are not members of Rednock School

We welcome applications from external students. The academic entry requirements for courses are identical for external applicants as they are for internal applicants.

Oversubscription criteria

The number of intended admissions for the year commencing 1st September 2025 will be such that the total does not exceed 275; this includes the school's admission

number for external applicants which will be 50. If external applicants exceed this number the school will give priority to applications as follows:

1. A 'looked after child' (1) or a child who was previously looked after but immediately after being looked after became subject to an adoption (2), child arrangements order (3) or special guardianship order (4):

A 'looked after child' (1) or a child who was previously looked after but immediately after being looked after became subject to an adoption(2) child arrangements order (residency order) (3) or special guardianship order (4) including those who appear to the admission authority to have been in state care outside of England and ceased to be in state care as a result of being adopted (5)

1) A 'looked after child' is a child who is (a) in the care of a local authority, or (b) being provided with accommodation by a local authority in the exercise of their social services functions (see the definition in Section 22(1) of the Children Act 1989) at the time of making an application to a school. In Gloucestershire, such children are referred to as Children in Care.

2) This includes children who were adopted under the Adoption Act 1976 (see section 12 adoption orders) and children who were adopted under the Adoption and Children's Act 2002 (see section 46 adoption orders).

3) Under the provisions of s.12 of the Children and Families Act 2014.

4) See Section 14A of the Children Act 1989 which defines a 'special guardianship order' as an order appointing one or more individuals to be a child's special guardian (or special guardians).

5) A child is regarded as having been in state care outside of England if they were in the care of or were accommodated by a public authority, a religious organisation, or any other provider of care whose sole or main purpose is to benefit society.

2. Students who have attended this school as Year 11 students.

3. Siblings of students on the roll of the school on 1st September 2025. (Sibling is defined as a brother or sister, half-brother or half-sister, adopted brother or adopted sister, step brother or step sister or the child of the parent / carer's partner and, in every case, the child must be living in the same family unit at the same address.)

4. Students who live in the priority catchment area i.e. the parishes of Dursley, Cam, Coaley, Uley, Stinchcombe, Owlpen, Nympsfield, Slimbridge, Alkington, Ham & Stone, Berkeley, Sharpness, North Nibley and Hinton & Hamfallow.

5. Applications which do not fall into the above criteria will be selected according to the proximity of the student's home address to the school. Where the number exceeds the school's capacity, students who are not offered places initially will have the opportunity to place their application on a waiting list. The waiting list will be maintained for at least two terms in the academic year of admission, i.e. until 20th December in Year 12 following an application for admission at the start of September. If a place in the year group becomes vacant, students on the waiting list will be offered places in the order defined by the above oversubscription criteria. Priority is not given based on the date that the application for admission is received. Therefore, for example, if a student moves to a location near to the school after the normal admissions process has been completed and they have a higher priority based on the above criteria, they will be ranked above those with lower priority already on the list.

Appeals

Applicants refused admission to our Sixth Form are entitled to appeal to an independent Appeals Committee. Details of the name and address of the clerk to the appeals committee may be obtained from the Admissions Officer at the school and full details of the appeal procedure will be sent free on request.

For admission to Year 12 or 13, a prospective student may make their own appeal in addition to or instead of an appeal by the student's parents.

1. Where the offer of a place would have been conditional upon exam results, appeals must be heard within thirty (30) school days of confirmation of those results.
2. Where the offer of a place would not have been conditional upon exam results, appeals must be heard within forty (40) school days of the deadline for lodging appeals.

Appeals are conducted in accordance with the DfE Regulations as to the holding of appeals on Admissions.

Supplementary Application Form Required?

Yes, please contact the school for further information.

Contact Details

Rednock School, Kingshill Road, Dursley, Gloucestershire, GL11 4BY

Telephone: 01453 543618

Email: sixthform@rednockschool.org.uk

Website: www.rednockschool.org.uk

Ribston Hall High School

Sixth Form Admissions Policy and Oversubscription Criteria

The Sixth Form at Ribston Hall High is mixed gender and applications are welcome from both internal and external candidates.

The prospectus and application forms are published in December of the year preceding entry and are available to all through the School Office and the School website.

They are specifically issued to all members of Year 11 at Ribston Hall High School, visitors who attend the Sixth Form Information Evening in December, and on request.

Information, advice and guidance is available for prospective Sixth Formers and their parents to provide expert professional support for their decision making at such a critical time.

Applications from students who are not members of Ribston Hall High School

Each year a large number of students join Ribston Hall High School's Sixth Form from other schools. Applications are welcomed from such students who wish to continue their studies at Ribston Hall High School. The minimum qualifying academic entry requirements for courses apply equally to both internal and external applicants.

Entry Criteria

The minimum entry requirements for Sixth Form admission to Ribston Hall High School for entry are:

- Five full course GCSEs at Grade 6 or higher, in separate subjects (Core and Additional Science count as separate subjects. Short course GCSEs do not count towards the full course GCSE requirements).
- Students should have a minimum of Grade 5 in both English Language and Mathematics.

- Students should meet individual subject requirements as described in the Sixth Form Information Booklet.

-

Due to the rigorous demands of A Level courses, there are subject specific requirements for entry to Advanced Level Courses. Please check these additional requirements carefully in the table outlined on www.ribstonhall.gloucs.sch.uk/sixthform/join-us

Oversubscription criteria

Ribston Hall High School aims to accommodate all those students who follow the application process and meet the admissions criteria. The School's admission number for external applications is 50. Where oversubscribed, the School will give priority to applicants in the order that follows:

1. 'Looked after Children/Previously Looked after Children' (*see appendix*) who meet the entry criteria;
2. Siblings (*see appendix*) of students on the roll of the school on 1st September of the year of entry, who meet the entry criteria;
3. Students opting for subjects with the smallest class sizes.
4. Geographical proximity to the school measured in a straight line from the centre of the student's main residence, including flats, to the main reception of the school using <http://www.postcodeanywhere.co.uk/route-planner-services>.
5. All other applicants.

Admission number 150 (Maximum 160).

Admissions Review

There is a system of admissions review in the event of a place not being offered. If a place in the Sixth Form is refused, notification of this fact will also advise of the right of admissions review.

The Governors' Admission Policy Procedure details the arrangements for admissions review, which equally apply to In Year Applications. In these cases, the same policy will apply to repeat applications.

For the Admissions Review Committee to consider a case, the student must provide:

- A completed admissions review form, outlining the reasons to be considered for extenuating circumstances (available from the school website)
- Evidence, if available, to back up this claim
- GCSE results

Supplementary Application Form Required?

Yes, please contact the school for further information.

Contact Details

Ribston Hall High School, Stroud Road, Gloucester, Gloucestershire, GL1 5LE

Tel: 01452 382249

Email: rhhs@ribstonhall.gloucs.sch.uk

Web: www.ribstonhall.gloucs.sch.uk

Sir Thomas Rich's School

Application Process

The School holds a Sixth Form Open Evening each January/February. The date is published on the School website, is advertised in the local press, and is also available from the school office. There is an online Sixth Form application process accessed through the school website with details provided at the Open Evening. Paper forms may also be obtained from the school office. The closing date for applications is stated on the application form. It is normally two weeks after the Open Evening.

Applicants are required to achieve the necessary GCSE grades (see *Admission Criteria*) and conditional offers are made subject to there being capacity in each subject (see *Over-Subscription*). An acknowledgement letter containing the conditional offer is sent as soon as possible after receiving the application.

To confirm their Sixth Form place, applicants should provide the School with **their GCSE results** (external applicants only) and submit their **online application form** preferably on GCSE results day, but no later than **12:30pm on the following day**. Results can be submitted with the online application form and this process will be confirmed to all applicants in advance of GCSE results day.

On-time applicants who have met the entry requirements for their stated subject choices will be offered a place and an email or letter will be sent in confirmation. Applicants who do not provide the information by the deadline will be treated as a late applicant. The School will endeavour to accommodate qualifying late applicants after processing on-time applications.

If the applicant has failed to meet the School Sixth Form Entry requirements a rejection letter or email will be sent by the end of August. However, should the applicant meet the Sixth Form School Entry Requirements but not the subject minimum entry requirement he/she will be invited to School to discuss their options.

Admission Number

In addition to students from our own Year 11, we admit a further 100 students from other schools to our Year 12. We are allowed to exceed this number but we will only do so for

a student who achieves our admission criteria and if there are places in the subjects the student wishes to study. (see *Over-Subscription*).

Allocation of places

Immediately after the closing date for applications we calculate the number of students who have applied for each subject. The number of sets for each of these subjects is then determined, to ensure reasonable set sizes. We are constrained by our teaching capacity and by the availability of specialist rooming in each subject. The maximum set size is normally 25 students. This may vary according to Health and Safety and curriculum considerations. However, if a subject area is full but places still exist in the Sixth Form overall, prospective students will be offered suitable alternative courses if they meet the entry requirements of those subject areas.

Oversubscription criteria

Over-subscription can occur where more students apply for a particular subject than we have capacity to accommodate i.e. we cannot reasonably provide sufficient sets because we do not have the teaching capacity and/or specialist rooming for that subject.

If more than 100 external students wish to take up places in our Sixth Form we shall accommodate them provided there is capacity in the subject teaching sets. In the event of over-subscription, after the admission of pupils with a Statement of Special Educational Needs or an Education Health and Care Plan where Sir Thomas Rich's School is the named school on the statement or plan, we shall make places available in order of priority to:

a. qualifying pupils who are a 'looked after child' (1) or a child who was previously looked after but immediately after being looked after became subject to an adoption(2) child arrangements order (residency order) (3) or special guardianship order (4) including those who appear to the admission authority to have been in state care outside of England and ceased to be in state care as a result of being adopted (5).
(1) A 'looked after child' is a child who is (a) in the care of a local authority, or (b) being provided with accommodation by a local authority in the exercise of their social services functions (see the definition in Section 22(1) of the Children Act 1989) at the

time of making an application to a school. In Gloucestershire, such children are referred to as Children in Care.

(2) This includes children who were adopted under the Adoption Act 1976 (see section 12 adoption orders) and children who were adopted under the Adoption and Children's Act 2002 (see section 46 adoption orders).

(3) Under the provisions of s.12 of the Children and Families Act 2014.

(4) See Section 14A of the Children Act 1989 which defines a 'special guardianship order' as an order appointing one or more individuals to be a child's special guardian (or special guardians).

(5) A child is regarded as having been in state care outside of England if they were in the care of or were accommodated by a public authority, a religious organisation, or any other provider of care whose sole or main purpose is to benefit society.

b. qualifying Pupil Premium pupils; Students attracting Pupil Premium are those who have been registered for free school meals at any point in the six years to 2022. The School will require independent and verifiable evidence of Pupil Premium entitlement in the requisite period from a reliable source such as a local authority. The School will make such enquiries as are necessary (of the relevant local authority) as to the entitlement of any student who has qualified.

c. qualifying students who have achieved the highest GCSE profile (i.e. the best grades in that subject and related subjects). We do not include "GCSE Equivalent" qualifications.

Admission Criteria

We admit students for the Sixth Form where academic demands are significantly higher than for GCSE. It is our experience that students who do not meet the criteria below will find the courses difficult and they are likely to struggle to make satisfactory progress. In order to be eligible for entry to Sir Thomas Rich's Sixth Form students should have the following qualifications:

- A minimum points score of 50 across a student's best 8 GCSEs results. The point's value for each of the 8 grades is derived from the numerical results of the GCSE. (For example 9=9, 8=8, 7=7, etc). (A short course GCSE in Religious Studies, taken in Year 10, at grade 7 or above would count as a full GCSE). Other short course GCSEs do not count towards the full GCSE requirements.)

- Mathematics and English Language GCSE each at grade 5 or above.

Pupils who were in receipt of Pupil Premium (Ever 6) in Year 11 (internal or external and including for the avoidance of doubt looked after children and previously looked after children, including those who appear (to the admission authority) to have been in state care outside of England and ceased to be in state care as a result of being adopted to be given equal first priority in admission arrangements, alongside LAC) who have failed to meet the general Sixth Form entry criteria will have their applications reviewed by an admissions panel made up of at least three members of senior staff and a place will be offered if they have met the minimum entry requirements for their chosen subjects as set out in the Sixth Form Prospectus.

For applicants who have met the above criteria, there are minimum entry requirements specified for each A Level course, which are set out in the Sixth Form Prospectus. The Prospectus is available at our Open Evening, from the School Office and also published on the School website. The same course requirements apply to both internal and external applicants. *These requirements apply to both internal and external applicants.*

Underage and Overage applications

Those pupils who apply underage and meet the School Entry requirements will be offered a place. They may if they wish defer entry until they are 16 years of age although they must ensure that they remain in full time education during the intervening period. applications must be lodged in accordance with the process set out above. Overage applicants will be determined by the Governors Admissions Committee on a case-by-case basis

Fraudulent Applications

A place will be withdrawn if it is offered in error or if it is established that the offer was obtained through a fraudulent or intentionally misleading application.

Appeals

If an applicant is not offered a place, he or she (and/or their parent / carer) has a right to appeal to an independent appeals panel against the School's decision. To do so they should contact the Admissions Officer at the School who will provide the necessary information and guidance. Any appeal should be made within three weeks

from the date of the letter sent by the School informing the student of the outcome of their application. Appeals will be heard within 30 school days of confirmation of results.

Supplementary Application Form Required?

Just one application form is required.

Contact Details

Sir Thomas Rich's School, Oakleaze, Gloucester, Gloucestershire, GL2 0LF

Telephone: 01452 338400

Email: info@strs.org.uk

Website: www.strschool.co.uk

St Peter's RC High School & Sixth Form Centre

Sixth Form Admissions Policy and Oversubscription Criteria

To be eligible for the Sixth Form, students should be under the age of 17 at the commencement of a 2-yr course or under 18 for a 1-yr course.

Students already on roll at St Peter's will be permitted to join Year 12, provided they meet the entry requirements for the agreed programmes of study (a list of detailed requirements is available from the Sixth Form Office) and have submitted a completed application form.

Offers of a place by the Governing Body to students wishing to join the Sixth Form from other schools will be conditional upon them meeting the entry requirements for the agreed programmes of study (a list of detailed requirements is available via the prospectus on the website) and submission of a completed application form.

Information about, and application forms for the Sixth Form can be obtained from the Sixth Form Admin Team at the postal address above. Dates of open days will be published on the School website (<https://www.6thform.sphs.uk.com/>).

External students who apply may be invited to a meeting with the Head of Sixth Form or a member of the Sixth Form team to discuss course options and academic entry requirements. They will be invited to accept the standards and expectations of the Sixth Form, the ethos and character of the school and the educational offer being made through completion of the form attached to the offer of a place.

If oversubscribed, places will be offered in accordance with the criteria below:

- Roman Catholic looked after children and previously looked after children
- Other Roman Catholic students.
- Note: To be considered under either of the criteria above, written confirmation that the child is Roman Catholic must be provided to the school
- Looked after children and previously looked after children
- Students from other schools.
- Other Students.

- Applicants within the same oversubscription criteria will be prioritised by a tie-breaker.
- Applications from external students after July 2025 will still be considered if places remain available.

Supplementary Application Form Required

Yes, please see school website

Notes

Roman Catholic. In this policy, 'Roman Catholic' refers to any pupil who has been baptised, or received, into the Roman Catholic Church or into a faith in full communion with the Roman Catholic Church (a list of these faiths, as supplied by the Catholic Education Service, is available from School Reception). Written confirmation (e.g. a baptismal certificate) of membership of one of these faiths will be required.

Looked After Children or Previously Looked After Children. A 'looked after child'^(a) or a child who was previously looked after but immediately after being looked after became subject to an adoption^(b) child arrangements order^(c) or special guardianship order^(d).

(a) A 'looked after child' is a child who is (a) in the care of a local authority, or (b) being provided with accommodation by a local authority in the exercise of their social services functions (see the definition in Section 22(1) of the Children Act 1989) at the time of making an application to a school. In Gloucestershire, such children are referred to as Children in Care.

(b) This includes children who were adopted under the Adoption Act 1976 (see section 12 adoption orders) and children who were adopted under the Adoption and Children's Act 2002 (see section 46 adoption orders).

(c) Under the provisions of s.12 of the Children and Families Act 2014, which amend section 8 of the Children Act 1989, residence orders have now been replaced by child arrangements orders. Child arrangements orders replace residence orders and any residence order in force prior to 22 April 2014 is deemed to be a child arrangements order

(d) See Section 14A of the Children Act 1989 which defines a 'special guardianship order' as an order appointing one or more individuals to be a child's special guardian (or special guardians).

Contact Details

St Peter's RC High School & Sixth Form Centre, Stroud Road, Gloucester, Glos,
GL4 0DD

Telephone: 01452 509206

Email: 6thform@sphs.uk.com

Website: www.sphs.uk.com

Stroud High School

Admissions to Stroud High School Sixth Form

Year 12 Admissions – Please note that Stroud High School admits boys and girls into the Sixth Form

Applications for Year 12 should be completed by the published deadline on the application form. Please refer to the school's website www.stroudhigh.gloucs.sch.uk and a copy of the application form. In April applicants will receive notification as to whether a conditional place has been allocated. Conditional places will be confirmed after the GCSE results day normally in August each year. New students must submit their GCSE results **as soon as possible ideally within 24 hours** of GCSE results day. Please contact the Sixth Form on 6thform@stroudhigh.gloucs.sch.uk.

Capacity

The PAN for the Year 12 cohort of Stroud High School is 180. The Sixth Form Leadership Team Panel may admit above this figure in exceptional circumstances and where it believes no prejudice will ensue. All Year 11 Stroud High School students who meet the published academic entry requirements can expect to be allocated a place in the Sixth Form, as well as a **minimum** planned admission number of 30 new students.¹

Academic Entry Requirements

Students will need to meet all of the following requirements for entry into Stroud High School Sixth Form:

- Students should achieve a minimum of 48 points taken from the sum of their best 8 full course GCSEs (for example, a Grade 8 is equivalent to 8 points). Core and Additional Science count as separate subjects. Short course GCSEs do not count towards the full course GCSE requirements.
- Students can apply for a Creative Scholarship. This is where they will choose to study 2 or more subjects from the following A Levels: Drama and Theatre, Music, Product Design, Art Textiles, Fine Art, Graphic Design and Photography.

¹ A place at Stroud High School will be withdrawn if it is offered in error or if it is established that the offer was obtained through a fraudulent or intentionally misleading application.

Students who apply through this pathway will not need to meet the 48 point threshold but they will be required to meet the subject entry requirements for all of their courses. Creative Scholarships are confirmed by the Admissions Review Group.

All Students are expected to have a minimum of Grade 5 in both English Language and Mathematics, but students with a Grade 4 will be considered if they have met the 48 point threshold or the requirements of the Creative Scholarship.

Students should meet individual subject requirements as described on the school website in their chosen subject areas if previously taken at GCSE level, or a relevant subject as specified on the school website www.stroudhigh.gloucs.sch.uk. Details of these requirements are available from the school.

Students will normally choose no more than 2 new subjects to study in Year 12. Students with insufficient formal GCSE qualifications but with demonstrable equivalent qualifications will be considered by Stroud High School, being guided by points equivalence and evidence of prior learning.

Admissions Review Group

Internal and new students who have missed the entry criteria may request consideration for a place by the Admissions Review Group who may accept or reject applications. This may include those students who narrowly missed the sixth form or subject entry criteria. Students who have missed the published admission criteria yet meet the standard for entry in their subject areas can have their case reconsidered. The Admission Review Group will also consider the case for all applicants who have previously been in receipt of Pupil Premium or Service Pupil Premium but have not met the published admission criteria. The Admission Review Group will consist of the Headteacher, the Head of Sixth Form and two representatives from the Governors' Communications and Admissions Committee.

Students continuing from Year 11 in Stroud High School

Priority for admission to Year 12 will be given to students progressing into the Sixth Form from Year 11 of the school (see oversubscription criteria below).

Students joining the school for the first time

We welcome applications from new students. Following submission of an application form, applicants will be invited to an advisory discussion with a member of the Stroud High School Sixth Form Team. Conditional places will be offered on the basis of the predicted GCSE grades supplied by the applicant's school and students should contact the school and submit their GCSE results within one week of GCSE results day, to confirm their place. Please contact either 6thform@stroudhigh.gloucs.sch.uk or +44(0)1453 847114.

Oversubscription criteria

If more students meet the academic standard than can be offered places, the following additional criteria in this order will be applied:

1. Any child in Public Care or was previously in Public Care² ³ including those who appear to the admissions authority to have been in Public Care outside of England and ceased to be in Public Care as a result of being adopted⁴ who achieves the required standard.
2. A student from a family that was previously eligible to receive Pupil Premium⁵ or Service Pupil Premium⁶ during Year 11. The school reserves the right to disqualify a student where an application has been made which contains incorrect, fraudulent or misleading information, or to refuse to admit the student if an offer has been made on that basis.

² Children in Public Care (Looked After Children)/Previously Looked After Children

A looked after child or a child who was previously looked after but immediately after being looked after became subject to an adoption, residence, or special guardianship order. A 'looked after child' is a child who is (a) in the care of a local authority, or (b) being provided with accommodation by a local authority in the exercise of their social services functions. (see the definition in Section 22(1) of the Children Act 1989 at the time of making an application to the school).

An adoption order is an order under section 46 of the Adoption and Children Act 2002.

A child arrangements order is an order settling the arrangements to be made as to the person with whom the child is to live under section 8 of the Children Act 1989. Section 14A of the Children Act 1989 defines 'a special guardianship order' as an order appointing one or more individuals to be a child's special guardian (or special guardians).

³ In the case of a 'looked after child' or 'previously looked after child' supporting documentation must be submitted to the school at the time of application.

⁴ A child is regarded as having been in Public Care or previously in Public Care in a place outside of England, if the child was accommodated by a Public Authority, a Religious Organisation or any other provider of care whose sole purpose is to benefit society. Supporting evidence of previously looked after status must be submitted to the school prior to sitting their test.

⁵ The Pupil Premium is additional funding paid annually to schools under section 14 of the Education Act 2002 for the purposes of supporting the attainment of disadvantaged children.

The school will require independent and verifiable evidence of Pupil Premium entitlement in the requisite period from a reliable source such as a local authority. The evidence/documentation needs to be sent to the school prior to sitting the test. This evidence/supporting documentation may be shared with all the grammar schools you elect to share with.

⁶ Students who are entitled to Service Pupil Premium are those whose parents are serving in the armed forces, those who have died in action or left due to injury or who has a parent who is on full time reserved service – ref: <https://www.gov.uk/government/publications/the-service-pupil-premium/service-pupil-premium-what-you-need-to-know>. The school will require independent and verifiable evidence of Service Pupil Premium entitlement in the requisite period from a reliable source. The evidence/documentation needs to be sent to the school prior to sitting the test. This evidence/supporting documentation may be shared with all the grammar schools you elect to share with.

3. Students from Stroud High School.
4. Students with the highest average GCSE points score (9-5) in the student's best eight full course separate subjects where the student has received numbered grades.

In the event of a tie break between two or more students when applying the above criteria, a process of random allocation will be followed by the Governing Board, which will be supervised by someone independent of the school.

Waiting List

In the event that the student reaches the required academic standard but there are no places available in Year 12, the student will be placed on a Waiting List. The order of this list will conform to the oversubscription criteria as listed above (section 6). If the number of students falls below the maximum Year 12 cohort number those on the waiting list will be offered places, in accordance with the oversubscription criteria. The waiting list for Year 12 will be held until 31st October.

Students from Year 11 of Stroud High School who left but then wish to return will be treated as new applicants.

Year 13 Transfer

New students who wish to transfer into Year 13 should in the first instance make contact with the Sixth Form Office.

Appeals

There is a system of appeals against non-admission, and details of how to appeal are available from the school. It is the school's policy to accept only one appeal application for each student in an academic year unless there is a significant change of circumstances.

Contact Details

Stroud High School, Beards Lane, Cainscross Road, Stroud, GL5 4HF

Telephone: 01453 764441

Email: admin@stroudhigh.gloucs.sch.uk

Website: www.stroudhigh.gloucs.sch.uk

Tewkesbury Academy

Sixth Form Entry Criteria

The minimum requirement for entry to Tewkesbury School Sixth Form is 5+ GCSE's at grades 4-9, English or Maths at 4+ as well as specific subject requirements which are detailed in our Sixth Form Prospectus. This can be viewed on our website

Entry to Year 12

Application forms can be found on our website www.tewkesburyschool.org or can be obtained from the Sixth Form.

Oversubscription criteria

If the Sixth Form is oversubscribed we will apply the same over subscription criteria as 11-16 admissions.

As an academy admissions are the responsibility of the School Governors. The Governors have arranged with Gloucestershire County Council for admissions procedures to be administered by the County Council but the final responsibility for deciding admission rest with the Governors.

Where applications for admission exceed the number of places available, the following criteria will be applied in the order set out below, to decide which children to admit:

1. Children in Public Care (Looked After Children or previously Looked After Children) ¹
2. Children wishing to join who have a sibling ² that will be continuing to attend Tewkesbury School.
3. Children living in, or having attended attend partner primary schools in the parishes of Tewkesbury Town, Ashchurch Rural with Walton Cardiff, Chaceley, Deerhurst, Forthampton, Northway, Teddington, The Leigh, Twyning and Wheatpieces at the time of their application. A map showing the area covered by these parishes is available from the Main School Office. Our partner primary schools are: Ashchurch County Primary School, Carrant Brook Junior School, Deerhurst & Apperley C of E Primary School, The John Moore Primary School,

Mitton Manor School, Norton C of E School, Queen Margaret's School, Tewkesbury C of E Primary School, Tirlbrook School, Tredington County Primary School, Twyning County Primary School.

4. Children for whom only this particular school is appropriate due to an exceptional medical condition. This will only be considered if they are supported by a written statement from the child's doctor. This must demonstrate that there is a very specific connection between the medical need and the facilities/resources supplied by this school.
5. Remaining places will be allocated on the basis of the proximity of the child's home to the school.

Additional Notes

¹ A 'looked after child' (1) or a child who was previously looked after but immediately after being looked after became subject to an adoption(2) child arrangements order (residency order) (3) or special guardianship order (4) including those who appear to the admission authority to have been in state care outside of England and ceased to be in state care as a result of being adopted (5). A 'looked after child' is a child who is (a) in the care of a local authority, or (b) being provided with accommodation by a local authority in the exercise of their social services functions (see the definition in Section 22(1) of the Children Act 1989) at the time of making an application to a school. In Gloucestershire, such children are referred to as Children in Care. This includes children who were adopted under the Adoption Act 1976 (see section 12 adoption orders) and children who were adopted under the Adoption and Children's Act 2002 (see section 46 adoption orders). Under the provisions of s.12 of the Children and Families Act 2014. See Section 14A of the Children Act 1989 which defines a 'special guardianship order' as an order appointing one or more individuals to be a child's special guardian (or special guardians). A child is regarded as having been in state care outside of England if they were in the care of or were accommodated by a public authority, a religious organisation, or any other provider of care whose sole or main purpose is to benefit society.

² Sibling refers to brother or sister, half brother or sister, adopted brother or sister, step brother or sister, or the child of the parent/carer's partner as well as children who are brought together as a family by a same sex civil partnership. In every case,

the child must be living in the same family unit at the same address, at the time of application.

³ Distances are measured in the following way. Children with the strongest geographical claim, measured in a straight line from the child's home address (including flats) to the School Reception area using the Local Authority's computerised measuring system, with those living closer to the school receiving the highest priority.

Contact Details

Tewkesbury Academy, Ashchurch Road, Tewkesbury, Glos, GL20 8DF

Telephone: 01684 292152

Email: info@ta.clf.uk

Website: <https://tewkesburyacademy.clf.uk/>

The Crypt School

Admissions criteria for entry to the Sixth Form – Year 12

The Sixth Form at The Crypt School is co-educational. Admission to the Sixth Form is open to both internal and external candidates. Applications for Year 12 should be completed by the published deadline on the application form.

Application process

Application forms and details of entry requirements are available as follows:

- At the School's Sixth Form open evening;
- From the School office by request; and
- On the School's website : <https://www.cryptschool.org/sixth-form/welcome-to-the-sixth-form>

Deadlines for applications will be on the application form.

Published Admissions Number ("PAN")

The School's Year 12 capacity is 175. All Year 11 students enrolled at The Crypt School who meet the academic entry requirements set out below are eligible for a place in the School's Sixth Form and priority is given to these students. In addition to those students who continue from Year 11, the School admits up to 50 external candidates.

Academic Entry criteria

For entry into the School's Sixth Form, all students must achieve the following:

- Minimum points score of 48 across a student's best eight GCSE results
- The points value for each of the eight grades is derived from the numerical results of the GCSE. For example, 9+9, 8+8, etc. (A short course GCSE in Religious Studies at Grade 7 or above would count as a full GCSE. Other short course GCSEs do not count towards the full GCSE requirements.)
- Grade 5 or above in Mathematics and English Language GCSE

Applicants wishing to study a particular A Level course must have achieved a minimum of Grade 6 at GCSE in that subject. Access to certain courses may require a higher minimum level of entry, as determined by the Headmaster and the Head of Post-16 Education and Personal Development. Any such additional course-specific standards are clearly set out within the Sixth Form Prospectus, which is available on the School's website or by request from the School office.

Where external applicants have an Education, Health and Care plan (EHCP), they are required to meet the minimum academic entry requirements in order to be admitted and for The Crypt School to be named on the plan. In that event, they will have priority over all other external applicants and the admissions number will be reduced accordingly. For internal applicants with an EHCP, in order for them to continue their studies at The Crypt School they will be required to meet the minimum academic entry requirements.

Internal and External applicants who narrowly miss the entry criteria and who still wish to be considered for a place in the Sixth Form may request have their application reviewed by an Admissions Panel, which includes the Headmaster, Head of Post-16 Education and Personal Development and Deputy Head - Academic. All applicants in receipt of the Pupil Premium who miss the entry grades set out above will automatically have their applications reviewed by the Admissions Panel.

We welcome applications from new candidates. Conditional places will be offered on the basis of the predicted GCSE grades supplied by the applicant. Applicants should be aware that an offer of a place in the Sixth Form does not guarantee access to a particular course or subject.

Where a course, subject or year group is oversubscribed, places will be allocated according to best performance in relevant GCSEs, and if places still exist in the Sixth Form overall, prospective students will be offered suitable alternative courses if they meet the entry requirements of those subject areas.

Oversubscription criteria

All those Year 11 students already enrolled at the School who meet the entry criteria will be eligible to continue into Year 12. Where there are more external applicants

who have met the entry criteria than available places, the following criteria will be applied, in the order set out below:

1. Looked After Children / Previously Looked After Children who have met the entry criteria
(see Note 1 below);
2. Applicants in receipt of Pupil Premium who have met the entry criteria (see Note 2 below);
3. Applicants who have met the entry criteria who have a parent who is, at the time the application is made, a member of School staff provided the parent has either been employed for minimum of two years, or has been recruited to fill a vacant post for which there was a demonstrable skills shortage at the time of their appointment;
4. All other applicants who have met the entry criteria, ranked by their best GCSE grades.

Ordering within the same criteria

For the purposes of oversubscription categories 1, 2 and 3, the higher ranking will be given to the applicant who lives closest to the School, as measured in a straight line from their usual place of residence (see below). The distance is measured from the Ordnance Survey point of the applicant's usual place of residence (including flats) to the main entrance of the school building, using the Local Authority's computerised measuring system. For the purposes of oversubscription category 4, the higher ranking will be given to the applicant with the highest score in the Grammar School Test.

Tiebreaker - In the event that two or more external applicants live the same distance (using the calculation method outlined above) from the School, a process of random allocation will be followed by the Governing Body, witnessed by an independent person.

Home address - An external applicant's home address is their usual place of residence. Where there are shared custody arrangements, then the home address is where the applicant spends the majority of school nights. For the avoidance of doubt, 'schools nights' in this context means Sunday night through to Thursday night inclusive.

Year 12 waiting list

In the event there are more external applicants who have met the entry criteria than available Sixth Form places, the School maintains a waiting list, prioritised in line with the oversubscription criteria set out above. For each added applicant, the list will be ranked again. This means the position of an applicant on the waiting list may change to be higher or lower over time. The tiebreak procedure set out above will apply if necessary. The waiting list is held until 31st December, after which point it falls away.

Transport

Where children are not entitled to free transport provided by the Local Authority (as identified in the Gloucestershire County Council School / Academy *Admissions Guidance Booklet*) it is the parents' responsibility to ensure that their child can attend the School.

Supplementary Application Form Required?

Yes, available on the school's website from September 2025

Open Evening

This will be held in November, please see website for further details

Contact details

The Crypt School, Podsmead, Gloucester, GL2 5AE

Telephone: 01452 530291

Email : swales@crypt.gloucs.sch.uk Mrs Sue Wales, Admissions Officer

Website : www.cryptschool.org

Note 1: A 'looked after child' (1) or a child who was previously looked after but immediately after being looked after became subject to an adoption (2) child arrangements order (residency order) (3) or special guardianship order (4) including those who appear to the admission authority to have been in state care outside England and ceased to be in state care as a result of being adopted.

- A 'looked after child' is a child who is (a) in the care of a local authority, or (b) being provided with accommodation by a local authority in the exercise of their social services functions (see the definition in Section 22(1) of the Children Act 1989) at the

time of making an application to a school. In Gloucestershire, such children are referred to as Children in Care.

- *This includes children who were adopted under the Adoption Act 1976 (see section 12 adoption orders) and children who were adopted under the Adoption and Children's Act 2002 (see section 46 adoption orders).*
- *Under the provisions of s.12 of the Children and Families Act 2014.*
- *See Section 14A of the Children Act 1989 which defines a 'special guardianship order' as an order appointing one or more individuals to be a child's special guardian (or special guardians).*
- *A child is regarded as having been in 'state care outside of England' if they were in the care of or were accommodated by a public authority, a religious organisation, or any other provider of care whose sole or main purpose is to benefit society.*

Note 2: *Children attracting Pupil Premium are those who have been registered for free school meals at any point in the six years prior to the closing date for registration for the Test. The School will require independent and verifiable evidence of Pupil Premium entitlement in the requisite period from a reliable source such as a local authority. The School will make such enquiries as are necessary of GCC (or the relevant Local Authority) as to the entitlement of any children who have qualified when notifying GCC of the test results.*

Wyedean School

Admissions and Oversubscription Criteria

Wyedean Sixth Form Centre has a total capacity of 350 students. Existing students from Year 11 are given priority (subject to achieving the entrance requirements). The remaining spaces to take the school to capacity will be based on the criteria below. Students who wish to apply to Wyedean Sixth Form Centre should complete the application form and return it by the closing date.

Entrance requirements September 2025

Students who have undertaken GCSEs in England

- Studying three or more A Levels - Five GCSEs at grade 6 or above, including English and Maths*
- Studying a mix of A Levels and BTECS - Five GCSEs at grade 4 and above. Two of which should be grade 6.
- Studying BTECs only - Five GCSEs at grade 4 and above. Plus, a grade 4 in the relevant subject

Students who have undertaken GCSEs in Wales

- Studying three or more A Levels - Five GCSEs at grade B or above, including English and Maths*
- Studying a mix of A Levels and BTECS - Five GCSEs at grade C and above. Two of which should be grade B.
- Studying BTECs only - Five GCSEs at grade C and above. Plus, a grade 4 in a relevant subject

*A trial may be offered in some subjects where English/Maths are not secured.

* Some subjects also require specific grades in specific GCSE subjects (as listed against the entry requirements for each subject). Please find details on our website at [Wyedean School and Sixth Form Centre - Apply to Wyedean Sixth Form](#).

Level 2 courses in Vocational Studies are available for those who do not have the entrance requirements to study Level 3 courses. This course requires students to have 5 GCSE grades at grade 3 including English and Maths.

Oversubscription Criteria

Where applications exceed the number of places available, the following criteria will apply:

1. Students in Public Care. A looked after child is a child who is (a) in the care of a local authority, or (b) being provided with accommodation by a local authority in the exercise of their social services functions (see the definition in section 22(1) of the Children Act 1989).
2. Students from schools in the Forest of Dean area (Dean Academy, Five Acres, Forest High, Dene Magna, and Newent)
3. Students who live closest to the school through a straight-line measurement on the Ordnance Survey map. The distance will be measured from the Ordnance Survey point of the student's home address to the Ordnance Survey point of the school, with those living closer to the school receiving the higher priority.

Tie-break

The third criterion above (distance) will provide our tie-break. If two or more students are living the same distance away from Wyedean, they shall be prioritised by random allocation.

Appeals

In the event of over subscription, any parent has the right of appeal for a place for their child at Wyedean School.

Appeals for a place at the school should be made in writing to the Trustee Support Officer Tess Deighton – tessdeighton@wyedeanschool.com. An appeal hearing to an independent panel will be set up within 40 school days of receipt of the request.

If you have any comments on the criteria for admissions to Wyedean School for September 2025 please email Principal@wyedeanschool.com or write to:
Mrs Gwennan Jeremiah, Principal, Wyedean School and Sixth Form, Beachley Road, Sedbury, Chepstow, Gloucestershire, NP16 7AA.

Supplementary Application Form Required

Yes, please visit: www.wyedean.gloucs.sch.uk/Sixth-Form/About-us/

Contact Details

Wyedean School and Sixth Form Centre, Beachley Road, Sedbury, Chepstow,
Gloucestershire NP16 7AA

Telephone: 01291 636180 / 625340

Email: principal@wyedeanschool.com

Website: www.wyedean.gloucs.sch.uk

Other Schools with 6th Forms

The below schools also offer Sixth Form Provision in Gloucestershire - Please go direct to school website for their admission criteria and further details:

Denmark Road High School

Denmark Road, Gloucester, GL1 3JN

Telephone: 01452 543335

Email: office@denmarkroad.org

Website: www.denmarkroad.org

The Cotswold School

The Avenue, Bourton-on-the-Water, Cheltenham, GL54 2BD.

Telephone: 01451 820554 (main switchboard) or 01451 812946 (sixth form reception)

Email: admin@thecotswoldschool.co.uk or sixthform@thecotswoldschool.co.uk

Website: www.cotswold.gloucs.sch.uk

Other Post 16 Providers

Colleges

Cirencester 6th Form College www.cirencester.ac.uk

Gloucestershire College www.gloscol.ac.uk

Hartpury College www.hartpury.ac.uk

South Gloucestershire and Stroud College www.sgscol.ac.uk

Training Providers

Bridge Training www.bridgetrainingltd.co.uk

Gloucester Military Preparation College www.mpct.co.uk/location/gloucester/

Prospect Training www.prospect-training.org.uk

Other Useful Contacts

Apprenticeships www.gov.uk/apply-apprenticeship

Care to learn (C2L) www.gov.uk/care-to-learn

Family Information Service www.glofamiliedirectory.org.uk

Forwards Employment Team (inc Kickstart Scheme)

www.forwardsgloucestershire.co.uk

Gloucestershire Youth Support Team www.youthsupportteam.co.uk

Local Authority Transport Policy Statement [Transport Policy for Students Aged 16-19 | Gloucestershire County Council](#)

School and College Transport [School transport | Gloucestershire County Council](#)

Traveline www.traveline.info

UCAS www.ucas.com

Young Gloucestershire www.youngglos.org.uk