

# 2021 Census

## Detailed Results - Gloucestershire

Data and Analysis Team – Gloucestershire County Council

Living our values every day  




Accountable



Integrity



Empower



Respect





Excellence



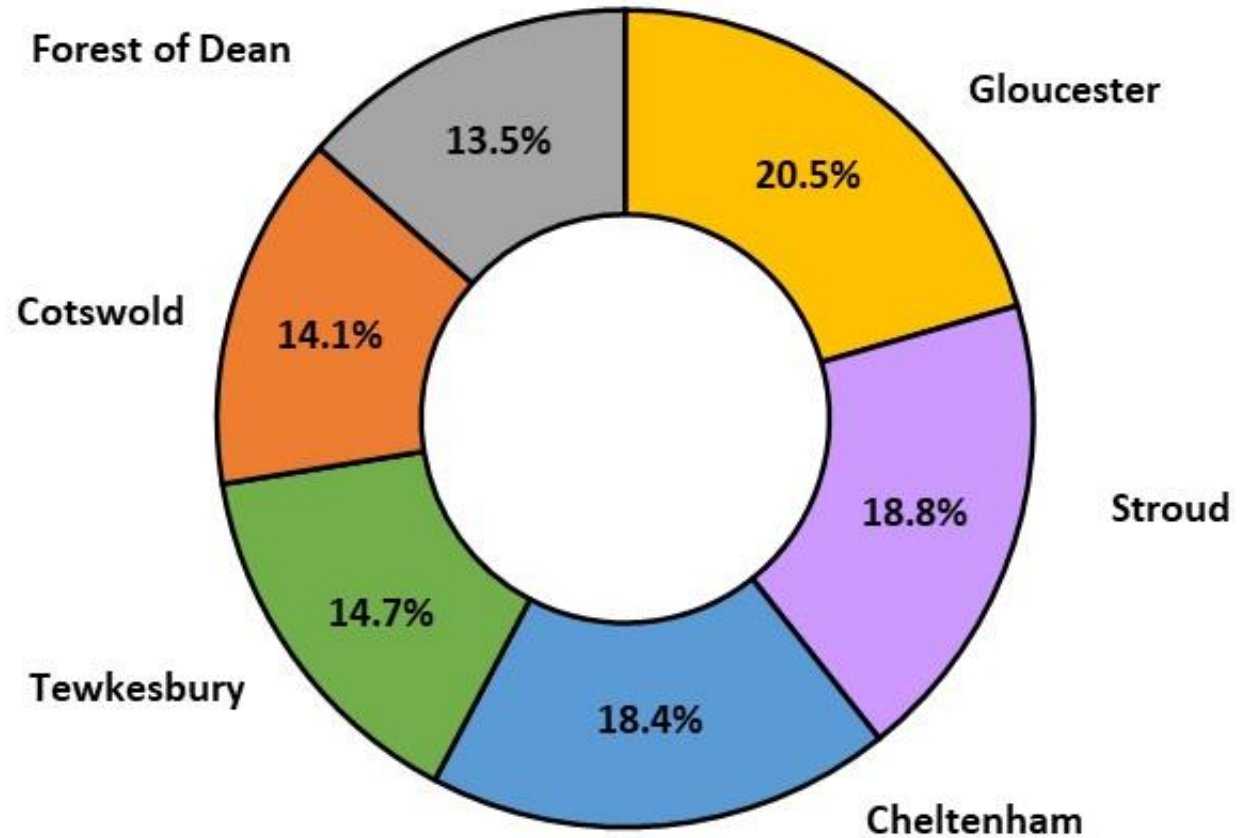
# Total population - 2021

 **645,076**  
people

 **48.9%** male

 **51.1%** female

Population Distribution of Gloucestershire, 2021



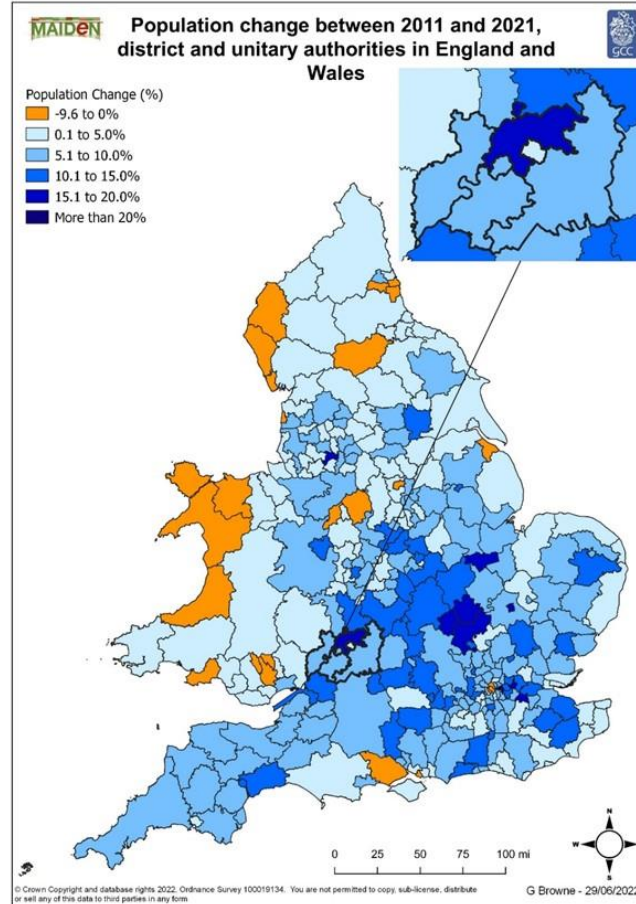
# Population change

**8.1% increase** 

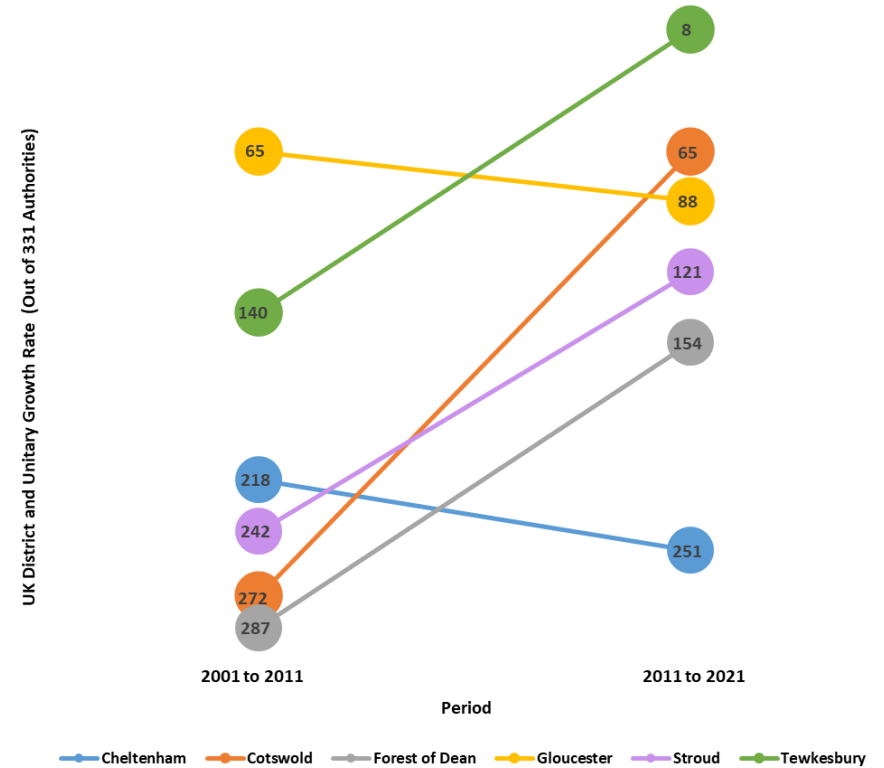
**50<sup>th</sup> highest population growth nationally**  
(out of 174 upper tier authorities)

**Tewkesbury 8<sup>th</sup> highest population growth nationally**  
(out of 331 districts)

**Cheltenham 251<sup>st</sup> highest population growth nationally**  
(out of 331 districts)



Rank for Population Growth Out of the 331 District and Unitary Authorities in England and Wales, 2001 to 2011 and 2011 to 2021



Living our values every day 



Accountable



Integrity



Empower



Respect



Excellence



# Population change

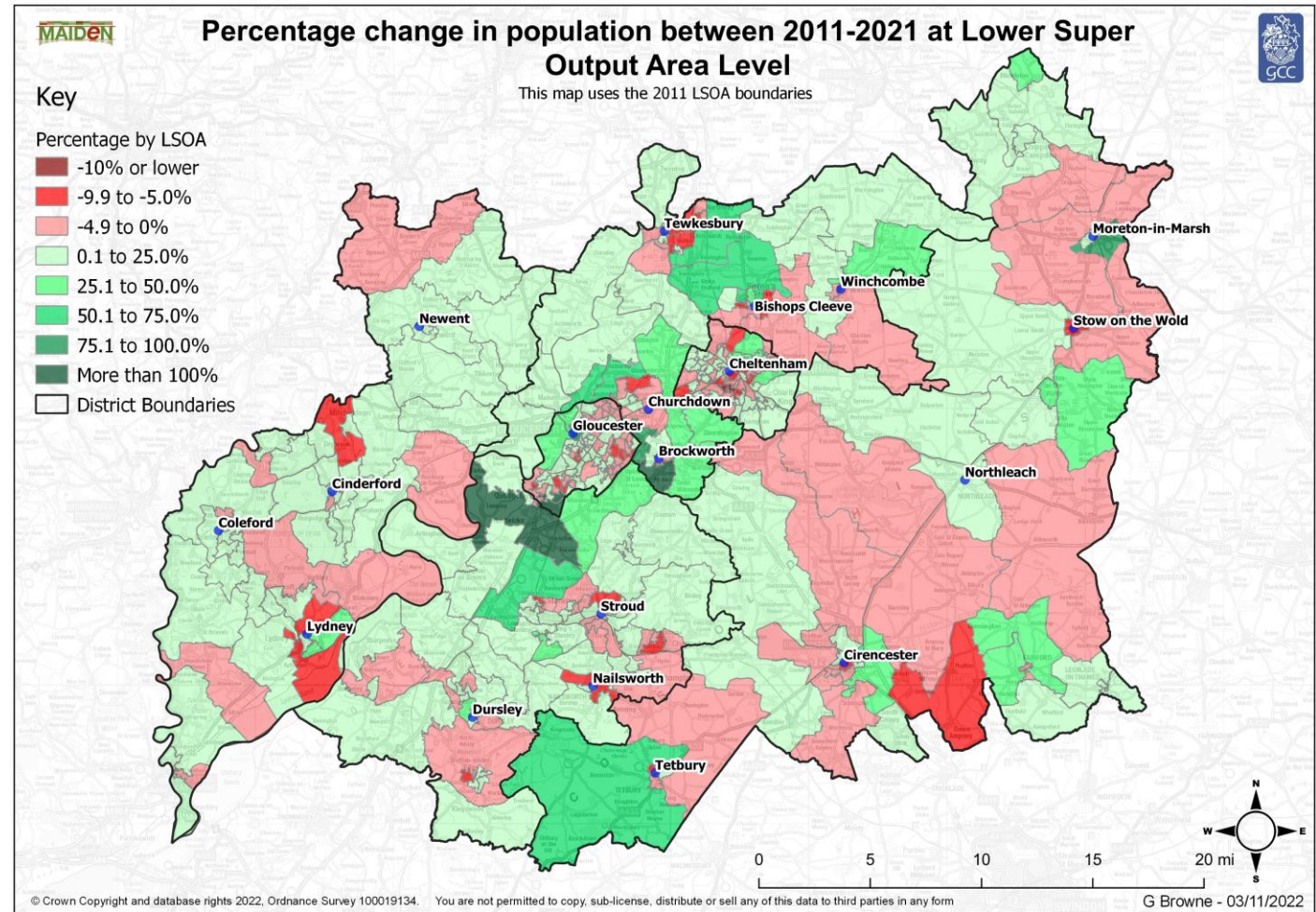
Around **40%** of LSOAs saw declining populations



**4** LSOAs (1%) saw growth of 100%+



The greatest growth was around the edge of **Gloucester**



Living our values every day



Accountable



Integrity



Empower



Respect



Excellence



# Who lives in Gloucestershire?

Living our values every day



Accountable



Integrity



Empower



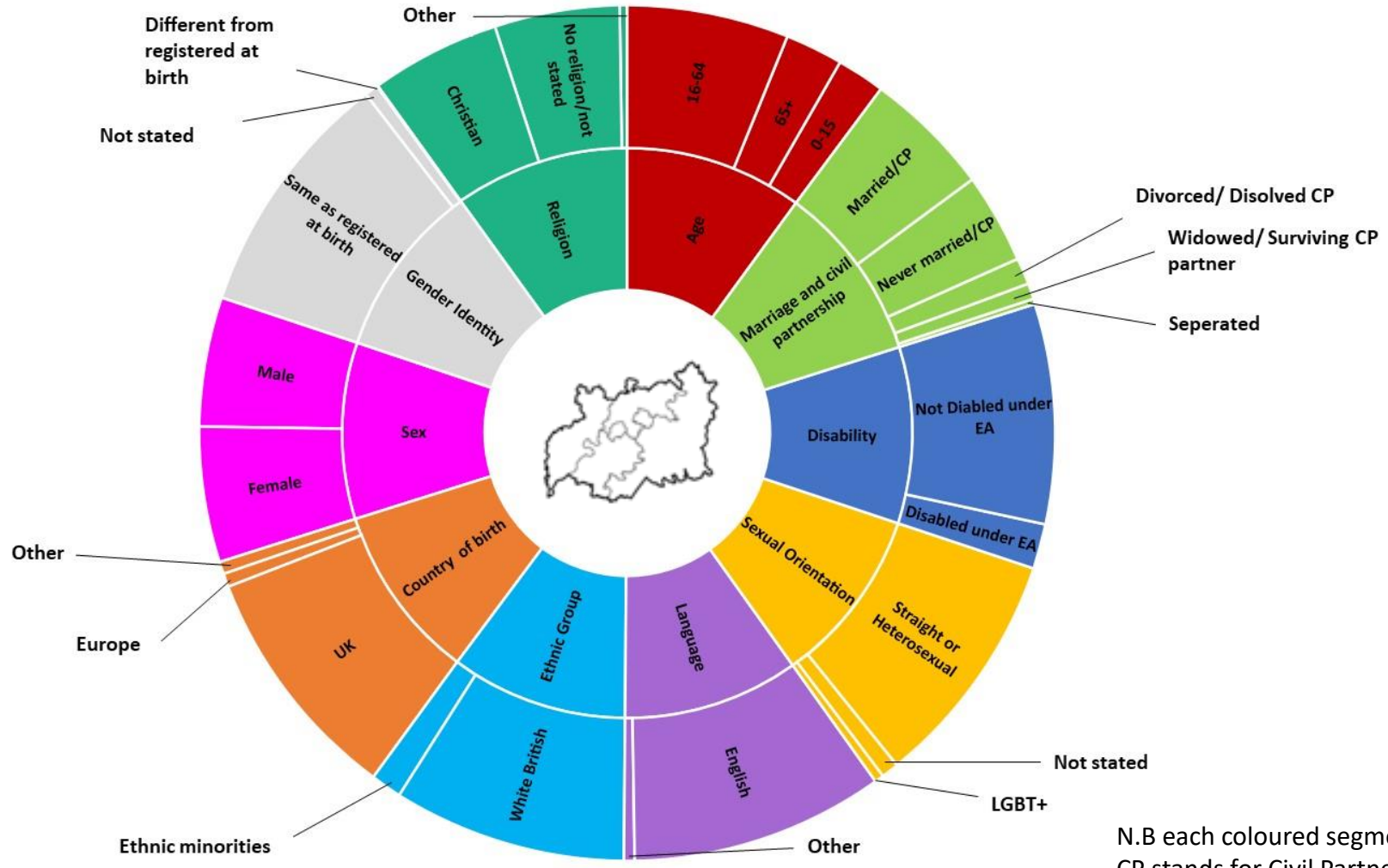
Respect



Excellence



# Gloucestershire as 100 people



Living our values every day

- Accountable**
- Integrity**
- Empower**
- Respect**
- Excellence**



# Broad age groups



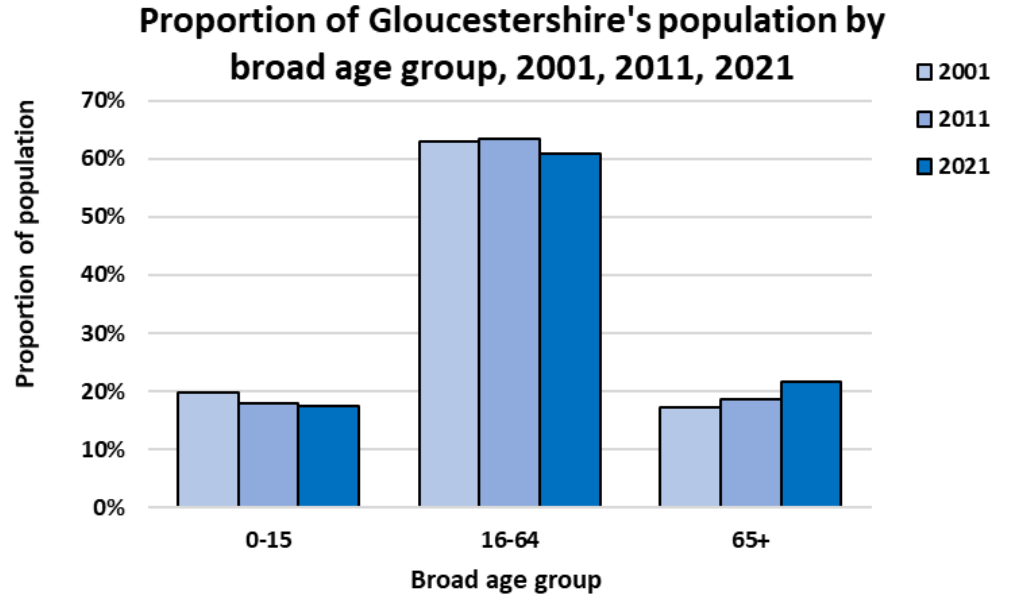
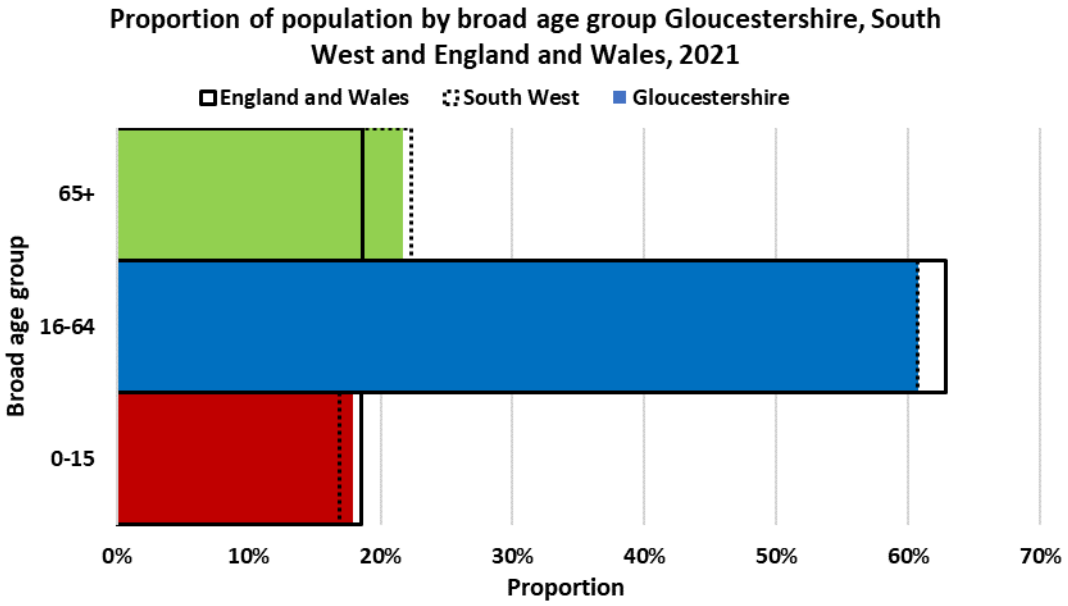
**122<sup>nd</sup>** highest % of  
0-15 year olds  
(out of 174 upper tier authorities)



**129<sup>th</sup>** highest % of  
16-64 year olds  
(out of 174 upper tier authorities)



**41<sup>st</sup>** highest % of  
65+ year olds  
(out of 174 upper tier authorities)



Living our values every day




Accountable Integrity Empower Respect Excellence



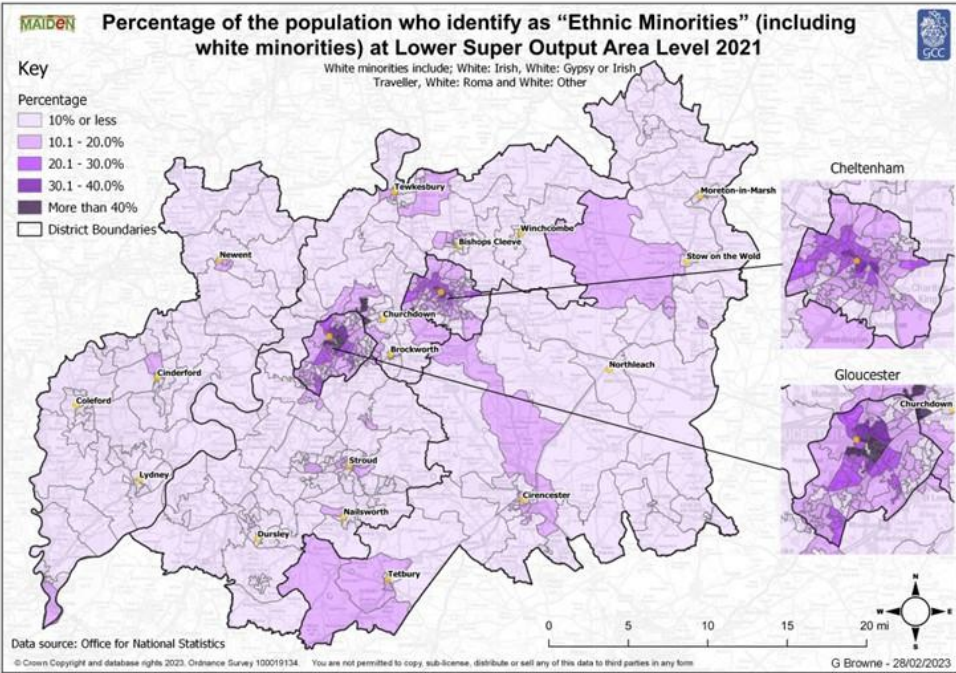
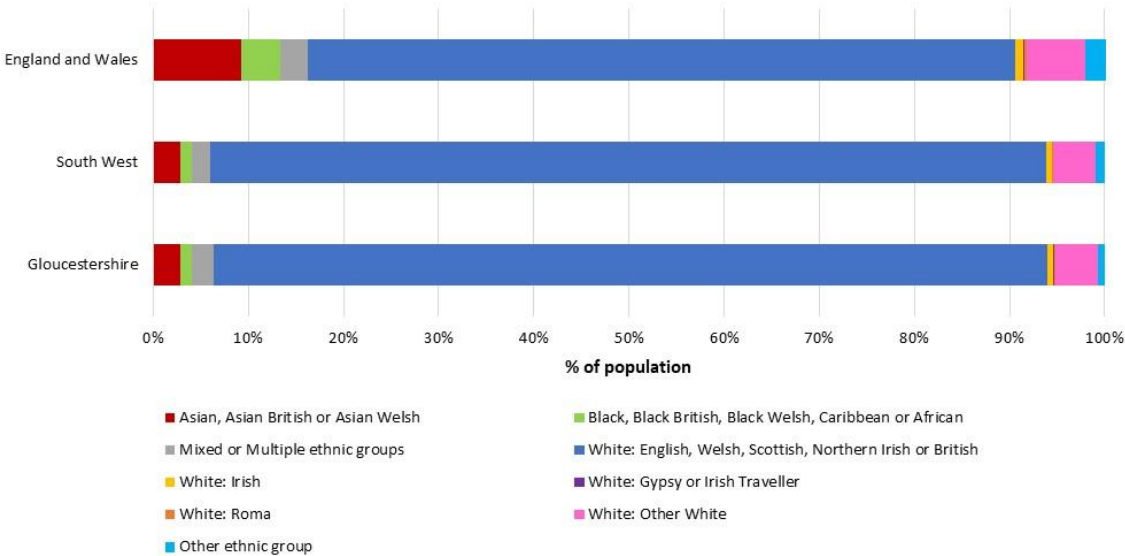
# Ethnic groups

**12.3%** of the population identify as “ethnic minorities” (includes all groups except white: British)

**White: Other White** largest ethnic minority group

**4.0 pp** increase in proportion of people from ethnic minority backgrounds 2011-21

Percentage of population by ethnic group, 2021



Living our values every day

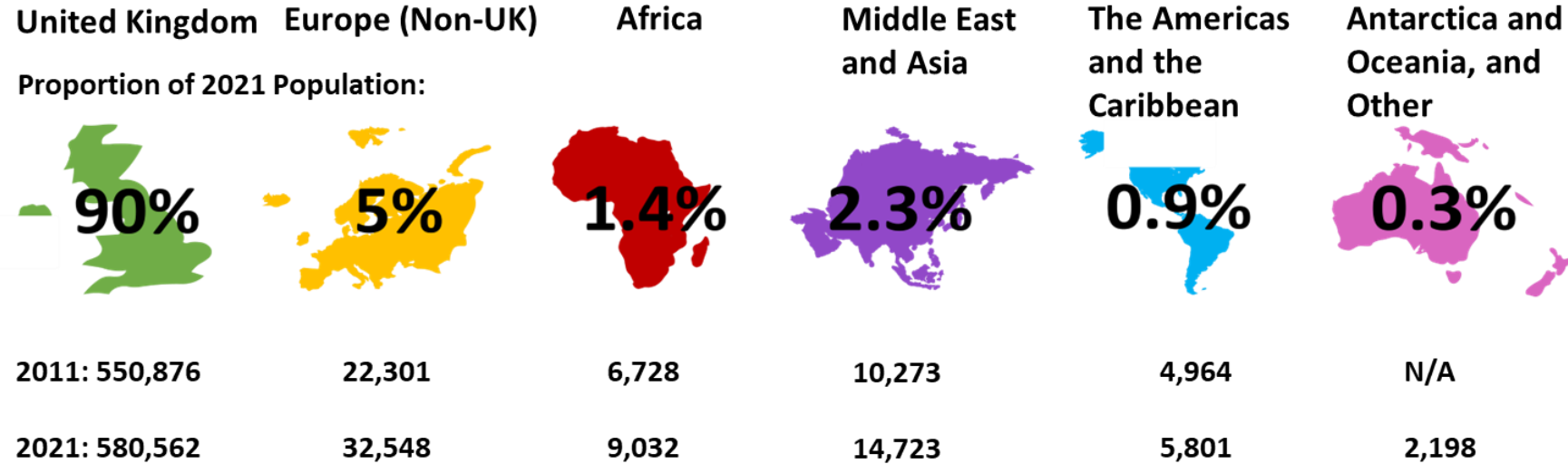


# Country of birth

1 in 10 people not born in the UK

Poland is the country where the highest number of non-UK people were born

40% increase in the non-UK born population between 2011-21

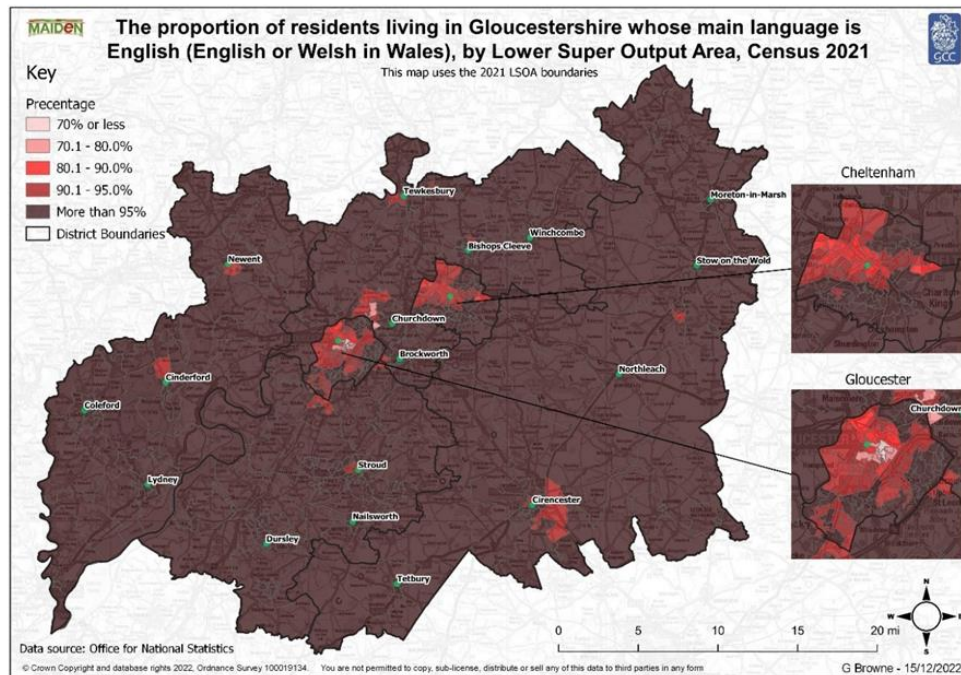


# Language

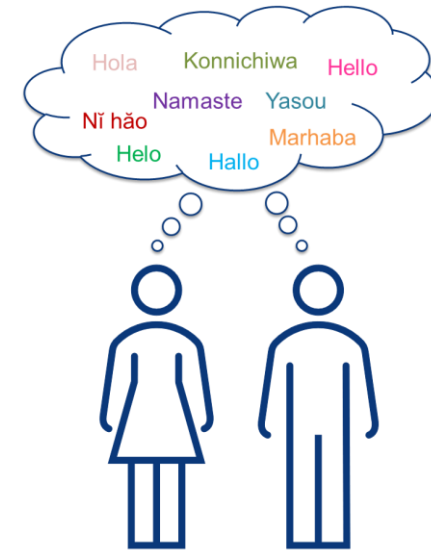
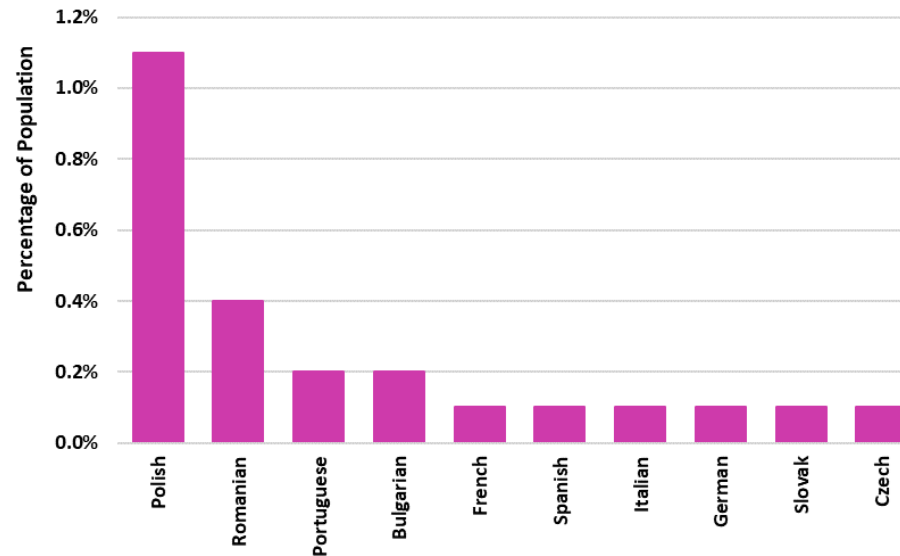
**95.7%** of population chose English as main language

**1 pp** increase in the proportion who do not speak English as main language

**0.7%** cannot speak English well or at all



Top 10 languages that are not English (English or Welsh in Wales), 2021- Gloucestershire



Living our values every day



Accountable



Integrity



Empower



Respect



Excellence





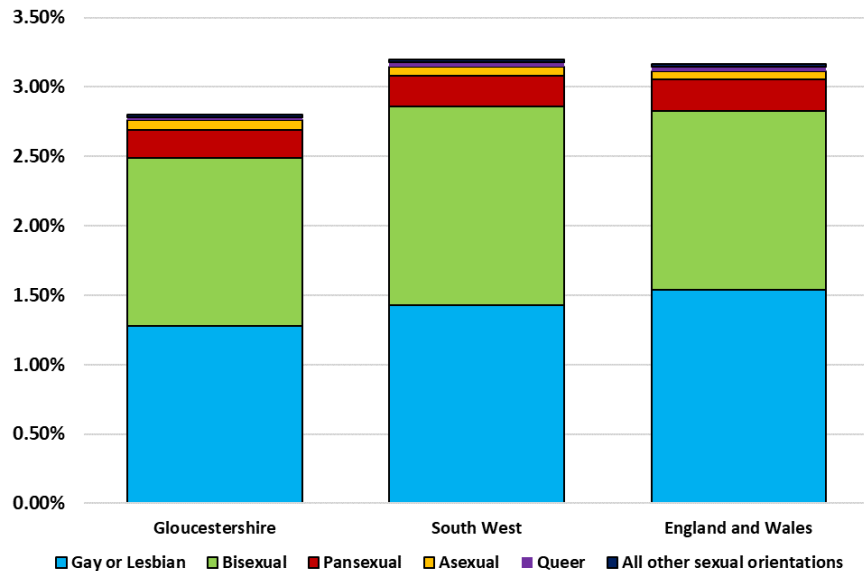
# Sexual orientation and gender identity

2.8% of the population gave a sexual orientation other than straight or heterosexual

0.4% of the population do not have the same gender identity as at birth

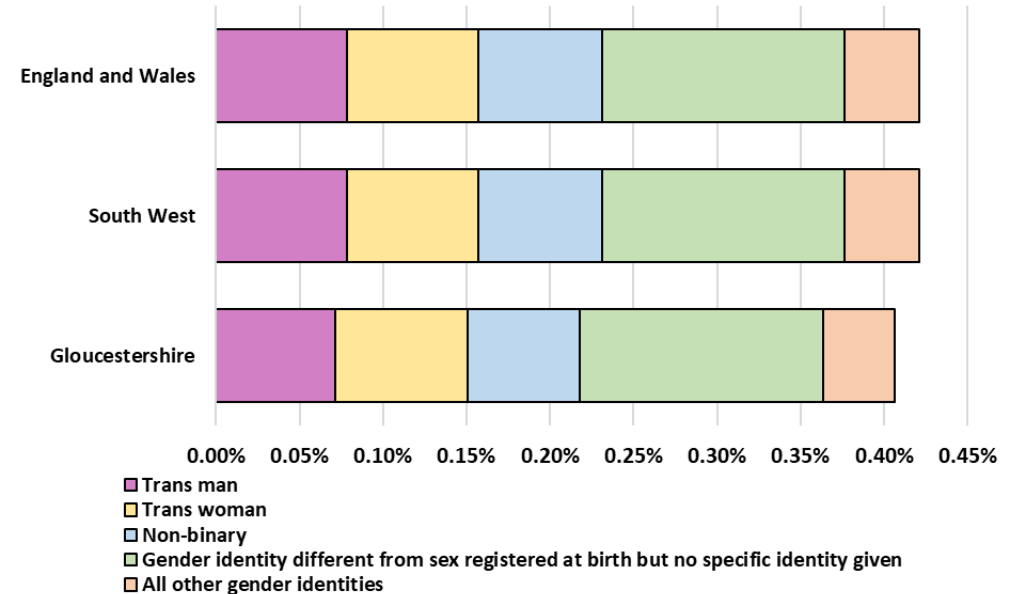
Around 1 in 20 people chose not to answer the sexual orientation and gender identity questions

Proportion of the population in each sexual orientation category\* in Gloucestershire, the South West and England and Wales



\*Excluding straight or heterosexual (90.4% of Gloucestershire's population) and the not answered category

Proportion of the population in each gender identity category\* in England and Wales



\*Excluding Gender identity the same as sex registered at birth (94.4% of Gloucestershire's population) and the not answered category

# Marriage and civil partnership



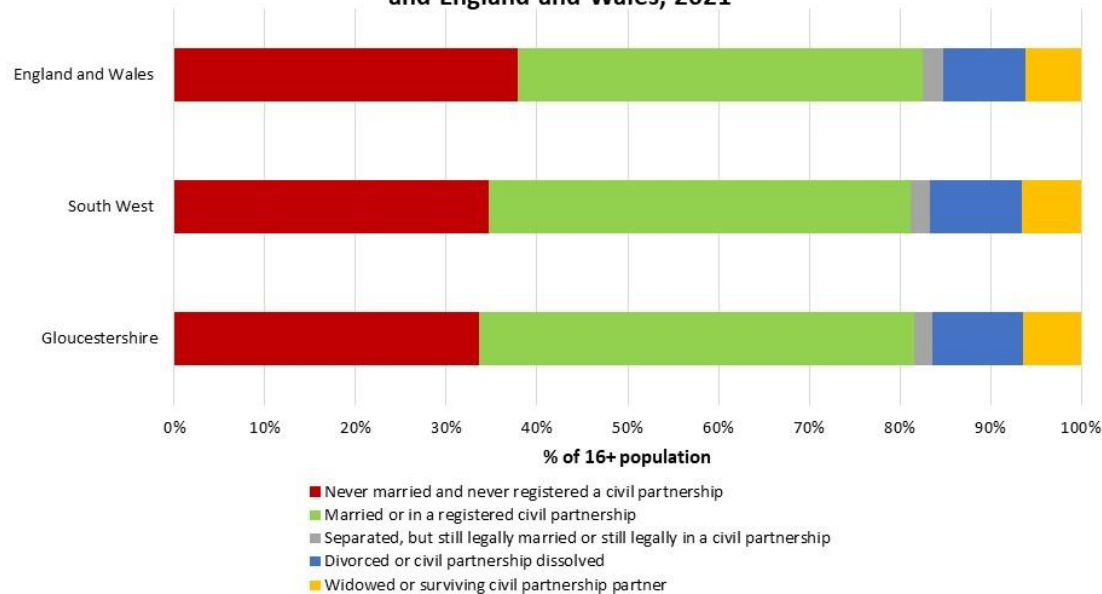
**48.0%**  
were married or  
in a civil partnership

**11.9%**  
were separated or divorced

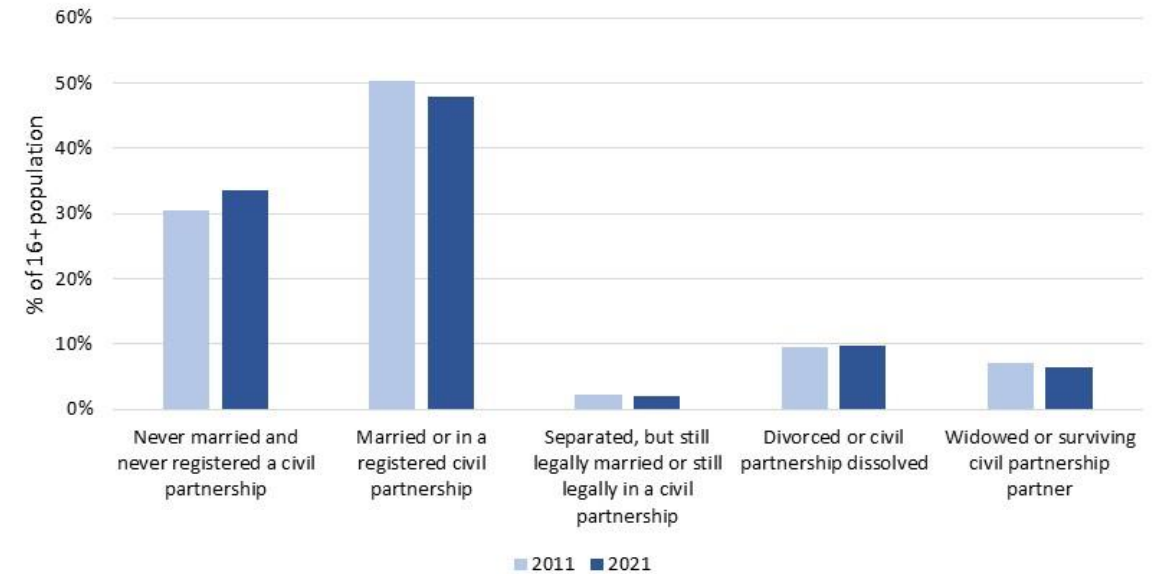


**19.5%** increase in those  
never married or never in a  
civil partnership

Proportion of 16+ population by marital status, Gloucestershire, South West and England and Wales, 2021



Proportion of Gloucestershire's population by marital status, 2011 and 2021



Living our values every day



Accountable



Integrity



Empower



Respect



Excellence



# Household composition

**30.4%** of households were one person households

**14.0%** of households were one person households aged 66+

**Little change in household composition since 2011**



One person household (30%)



Couples with children (25%)



Couples with no children (19%)

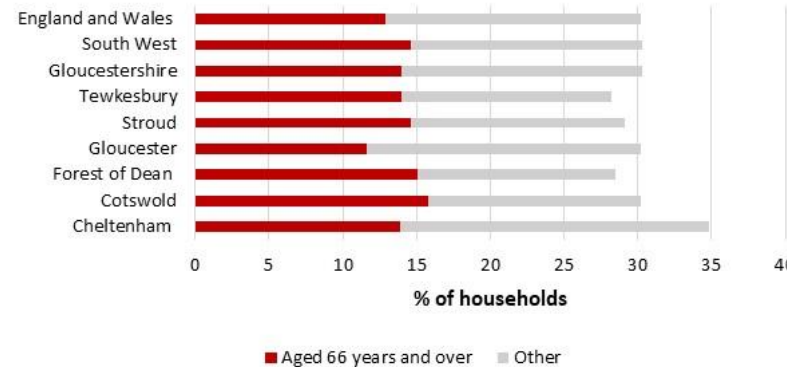


Other households (17%)

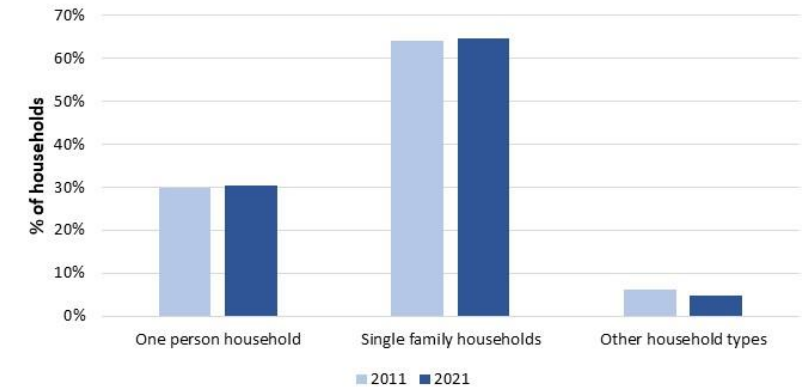


Lone parent family (9%)

Breakdown of one person households by district, 2021





Proportion of Gloucestershire's households by composition type, 2011 and 2021



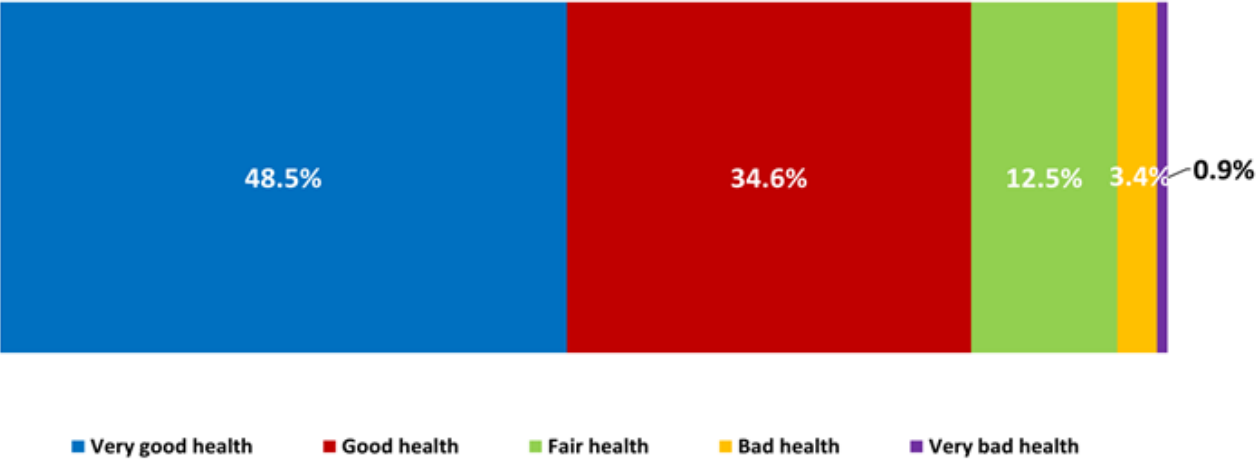
# Self-reported health

 **1 in 2** people with very good health

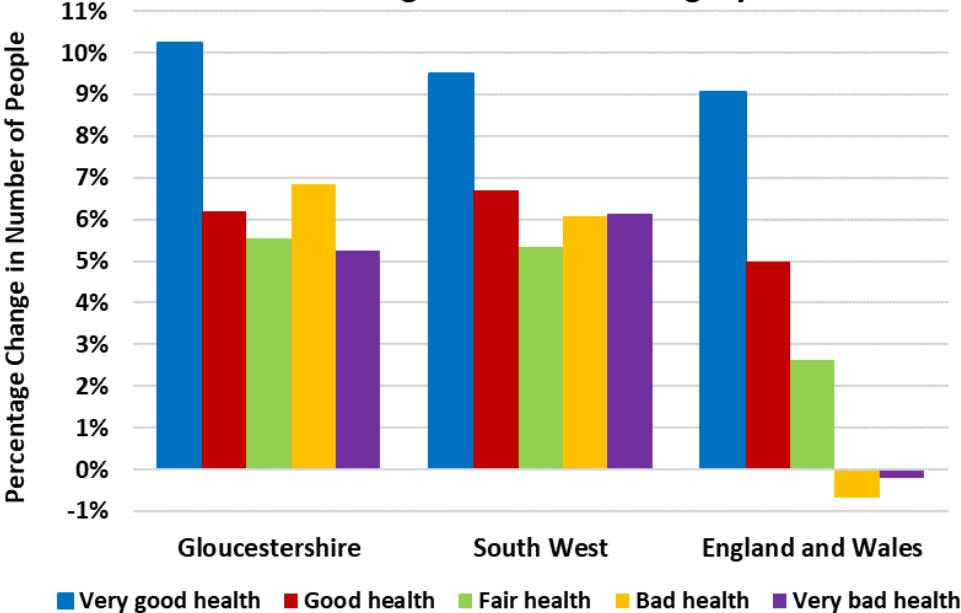
 **8.3%** increase in people with fair, good or very good health

 **6.5%** increase in people with bad or very bad health

Proportion of Gloucestershire’s population according to each general health category, 2021



Percentage change in number of people identifying with each general health category



# Disability

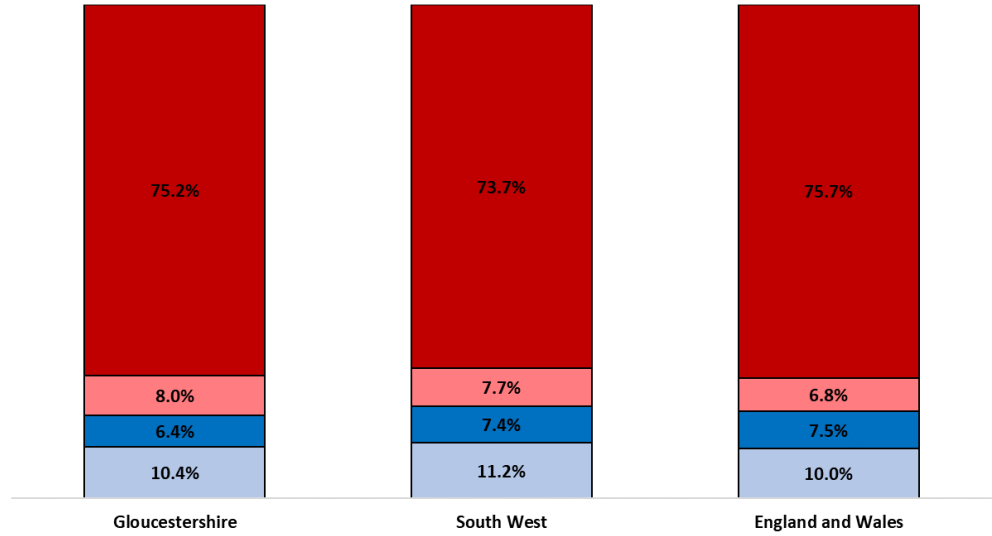
**16.8%** of the population are disabled under the Equality Act (2010)

**6.4%** not disabled but do have a long term physical or mental health condition(s)

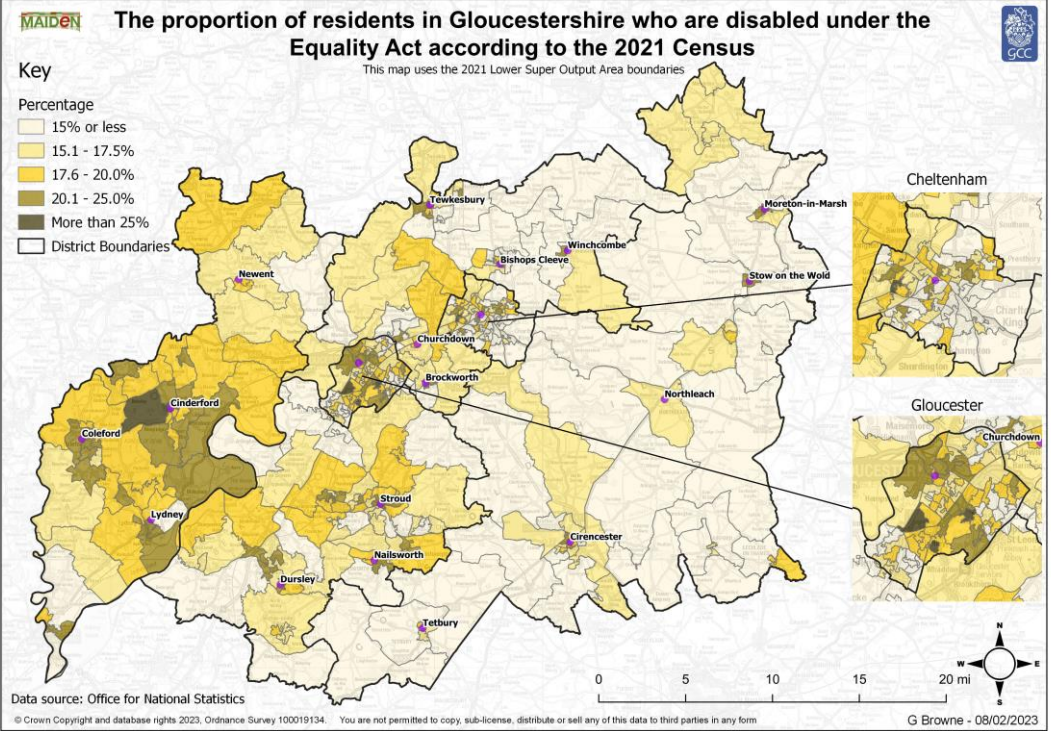
In some LSOAs **1 in 4** people are classed as disabled



Proportion of the population by disability status



- Not disabled under the Equality Act: No long term physical or mental health conditions
- Not disabled under the Equality Act: Has long term physical or mental health condition but day-to-day activities are not limited
- Disabled under the Equality Act: Day-to-day activities limited a lot
- Disabled under the Equality Act: Day-to-day activities limited a little



Living our values every day



Accountable



Integrity



Empower



Respect



Excellence

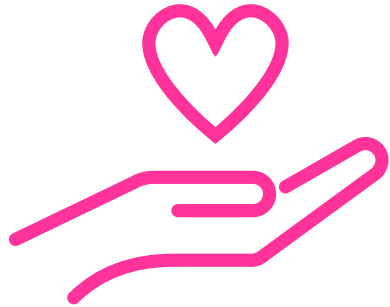


# Unpaid carers

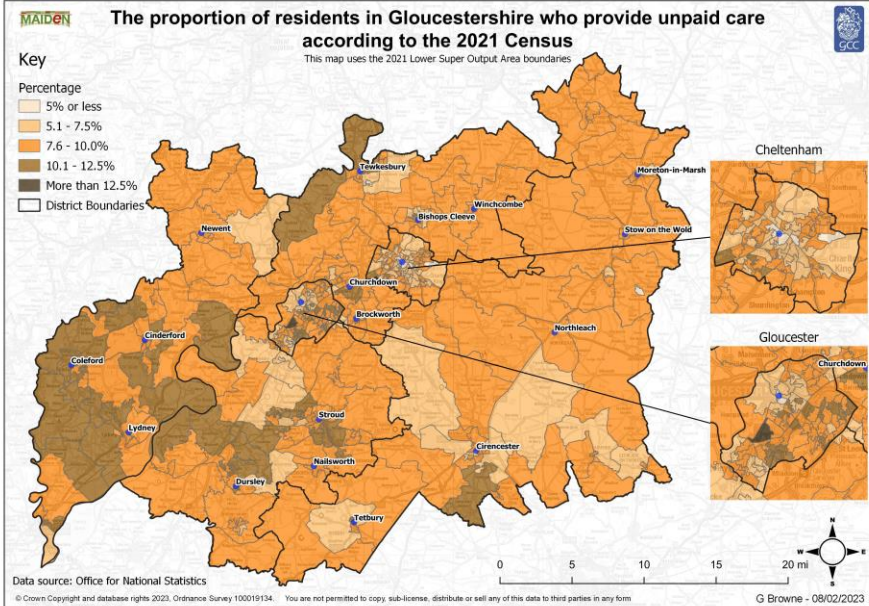
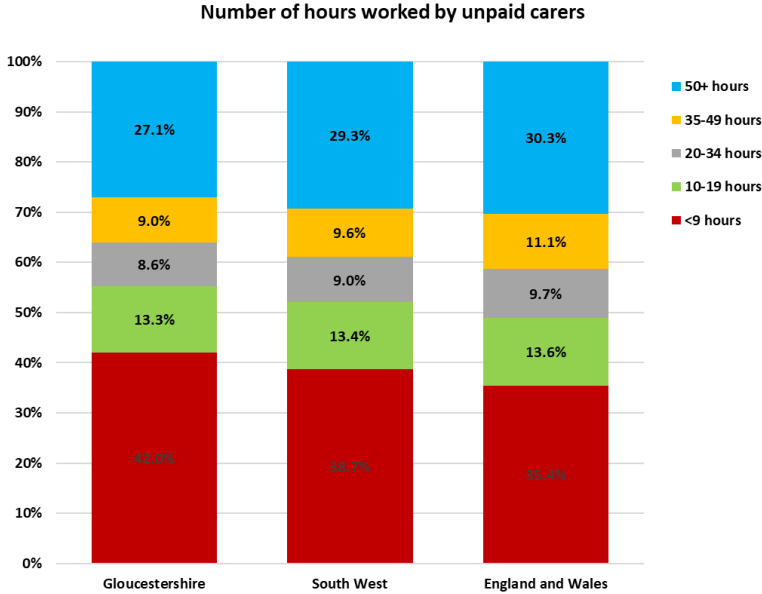
 **8.5%** of Gloucestershire's residents are unpaid carers

 Most carers provide less than 9 hours or more than 50 hours care

Unequal distribution of the proportion of people providing unpaid care across the county




**51,862**  
unpaid carers



Living our values every day



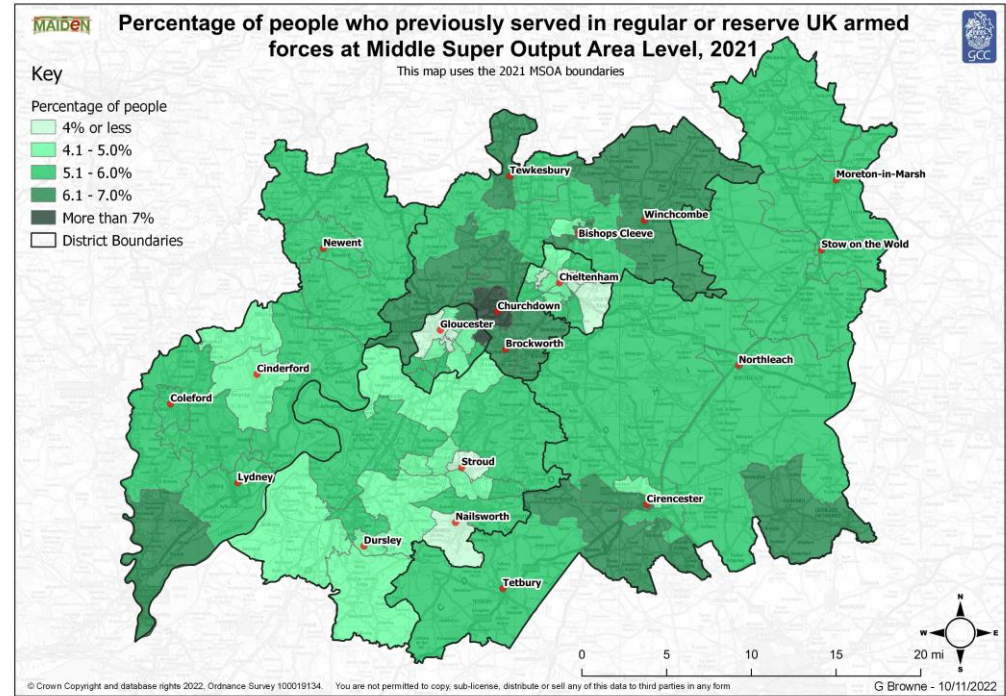
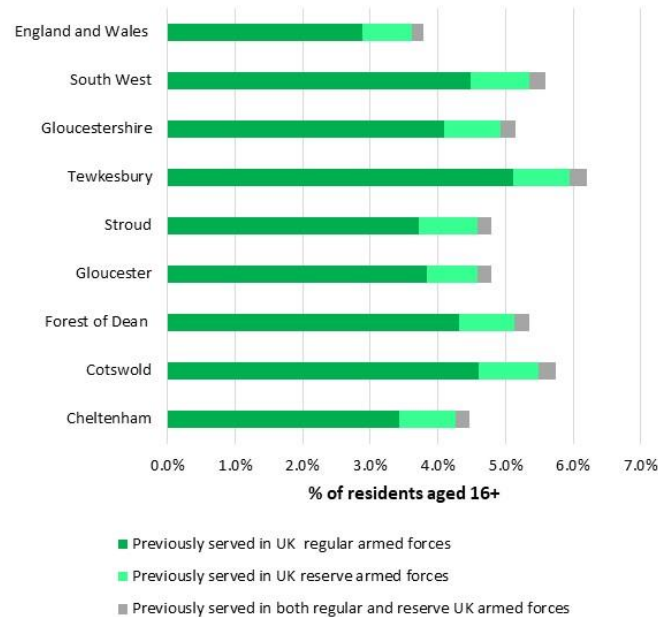
# Armed forces veterans

 **1 in 20** people aged 16+ are armed forces veterans

**27,418** people are armed forces veterans






 **1 in 10** households contained an armed forces veteran

Percentage of 16+ residents who have previously served in the armed forces, 2021



Living our values every day



-  Accountable
-  Integrity
-  Empower
-  Respect
-  Excellence



# Education

Living our values every day



Accountable



Integrity



Empower



Respect



Excellence



# Highest level of qualification

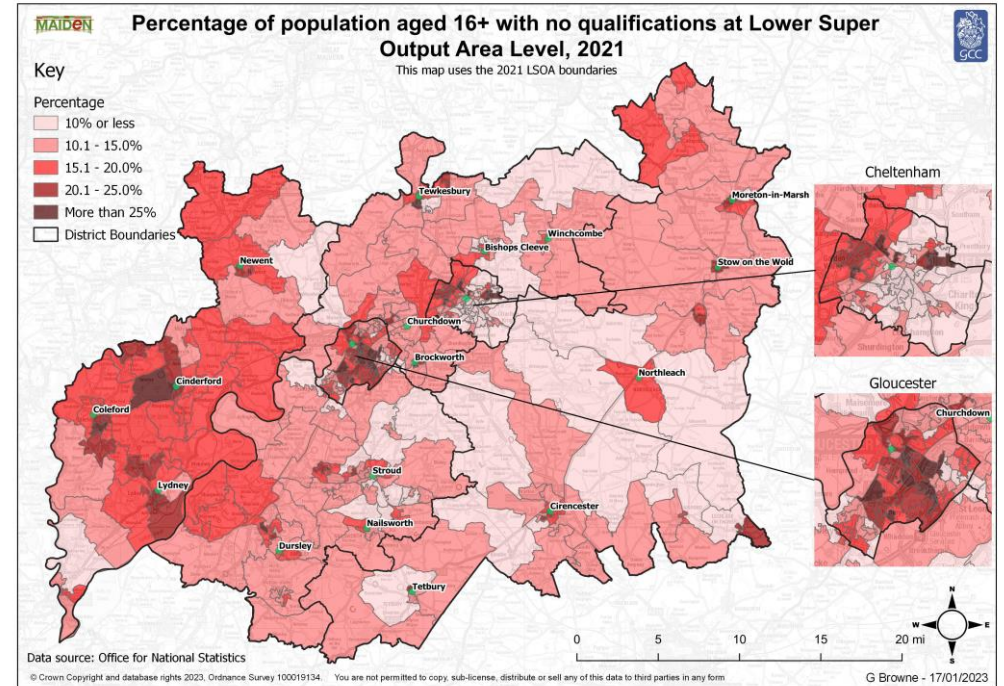
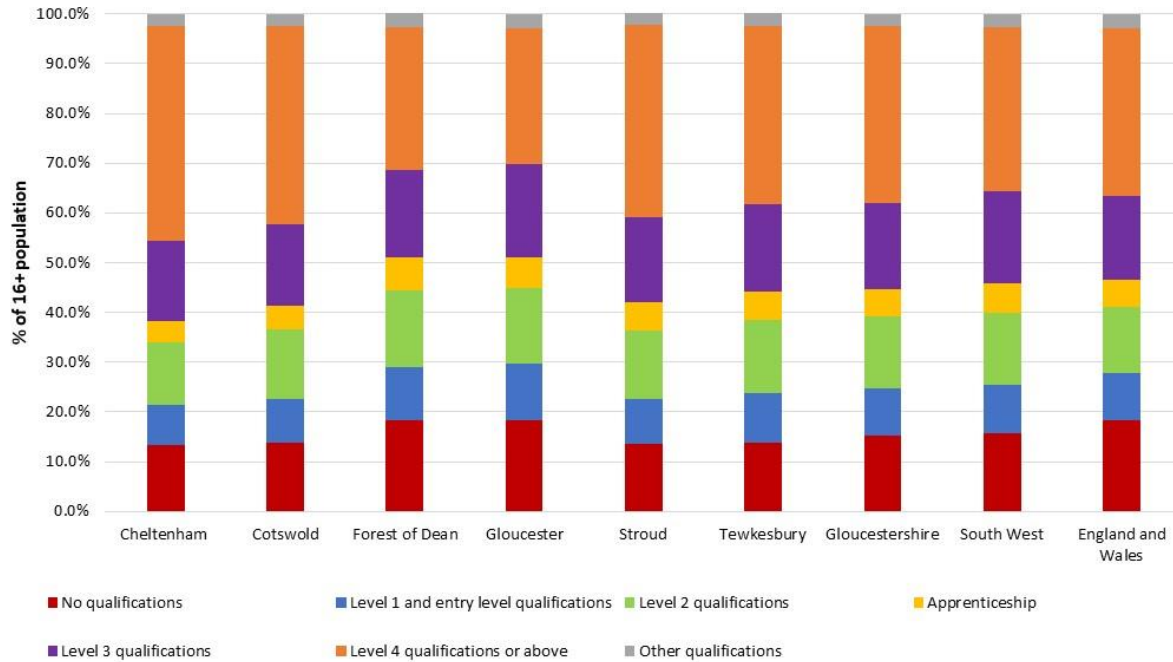


35.6% of 16+ year olds qualified to Level 4+

15.2% of 16+ year olds have no qualifications

5.5% of 16+ year olds have an apprenticeship

Percentage of the population aged 16+ by highest level of qualification, 2021



Living our values every day



Accountable



Integrity



Empower



Respect



Excellence



# Employment

Living our values every day



Accountable



Integrity



Empower




Respect



Excellence



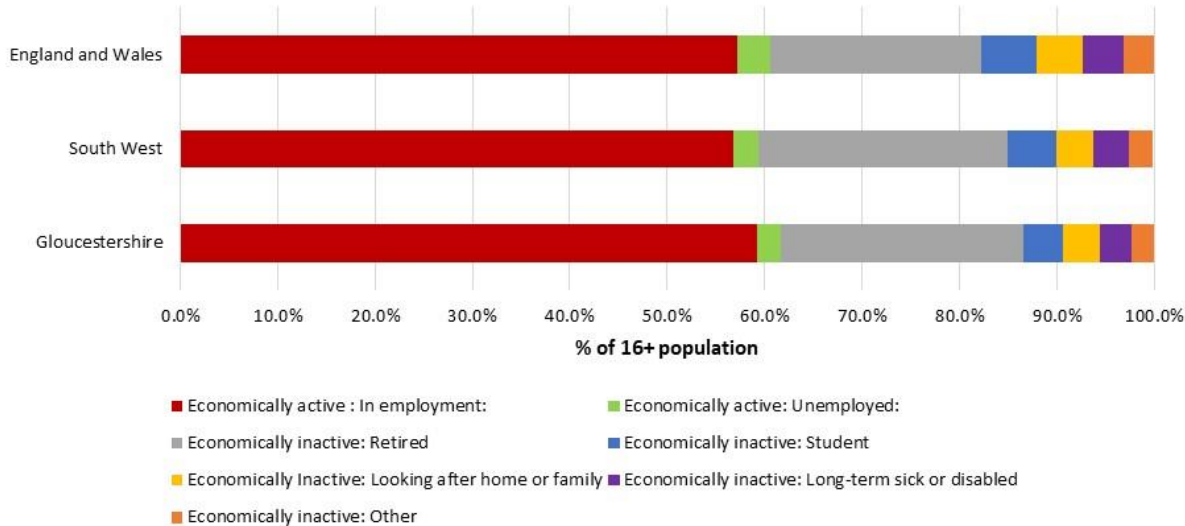
# Economic activity

 **61.7%** of 16+ were economically active

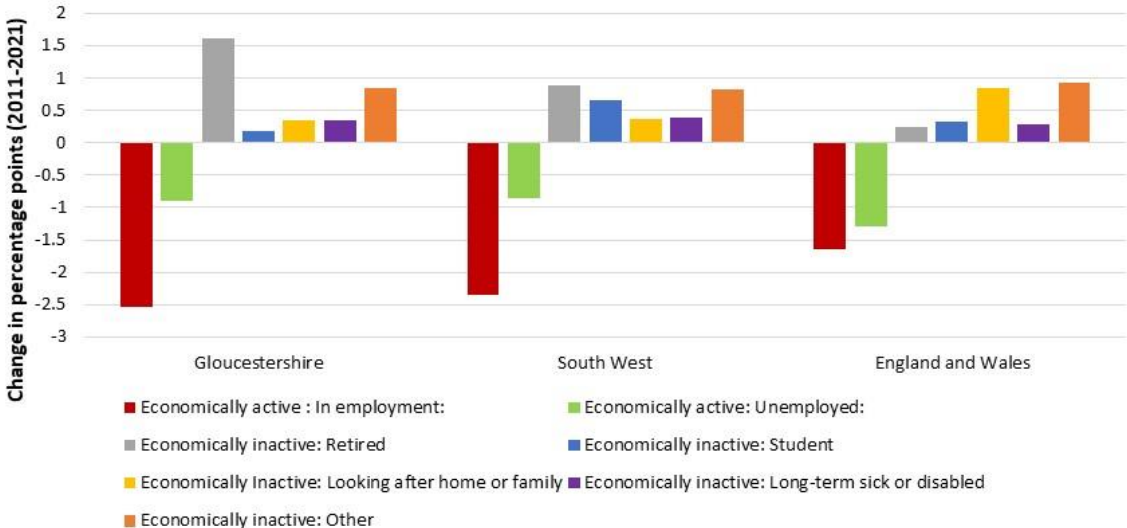
**38.3%** of 16+ were economically inactive

 **18.9%** increase in economic inactivity

Proportion of Gloucestershire's 16+ by economic activity status, Gloucestershire, South West and England and Wales, 2021



Change in the proportion of the 16+ population's economic activity status

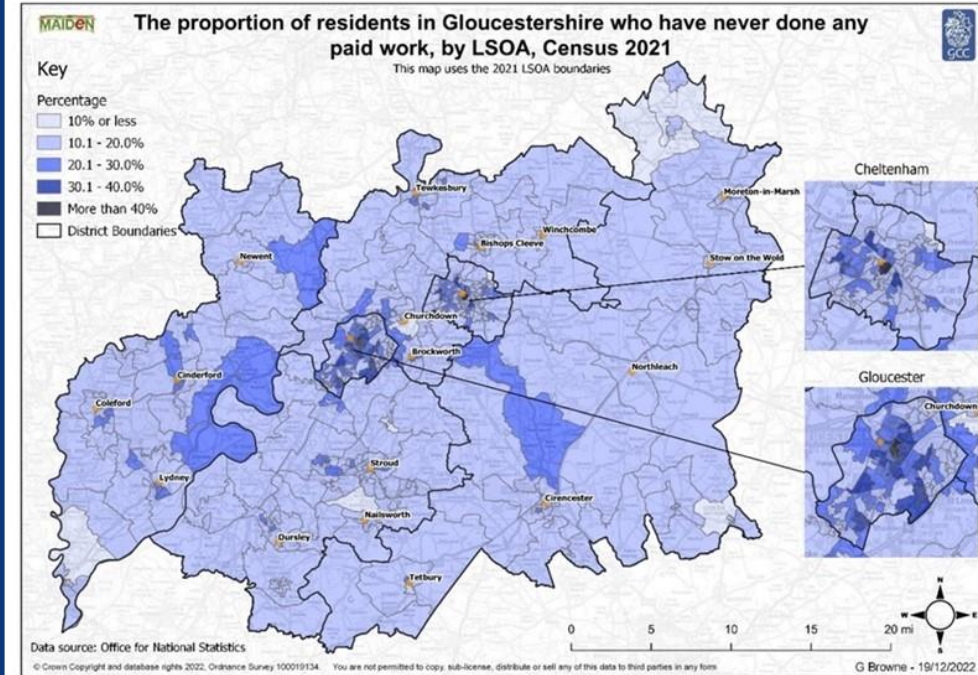
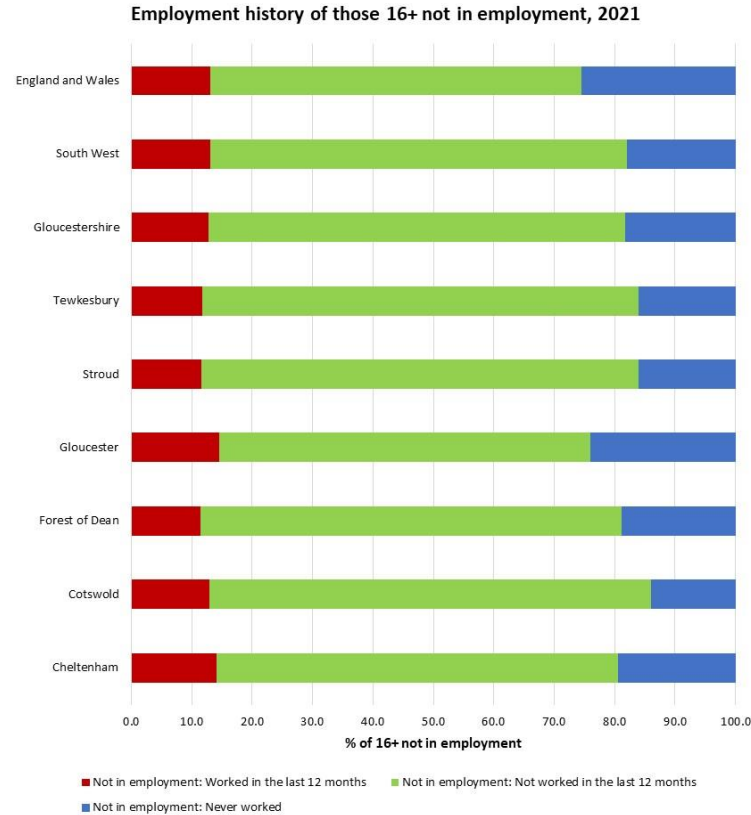


# Not in employment

216,996 people 16+ not in employment

68.9% not in employment in the last 12 months

18.3% have never worked



Living our values every day



# Industry



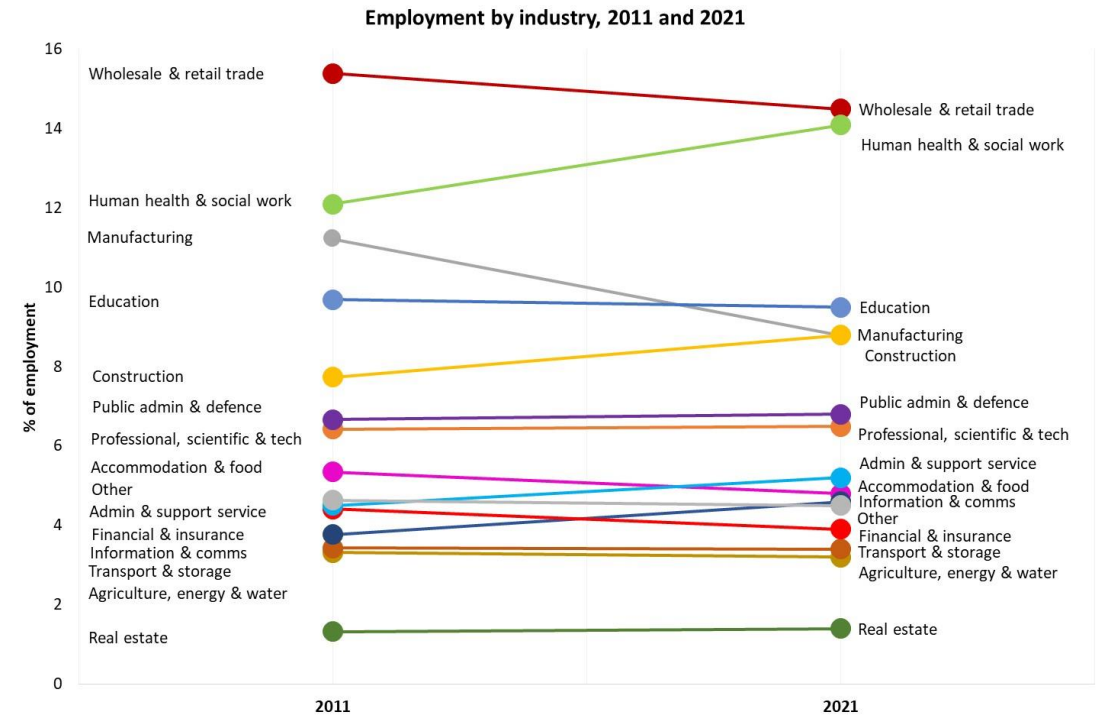
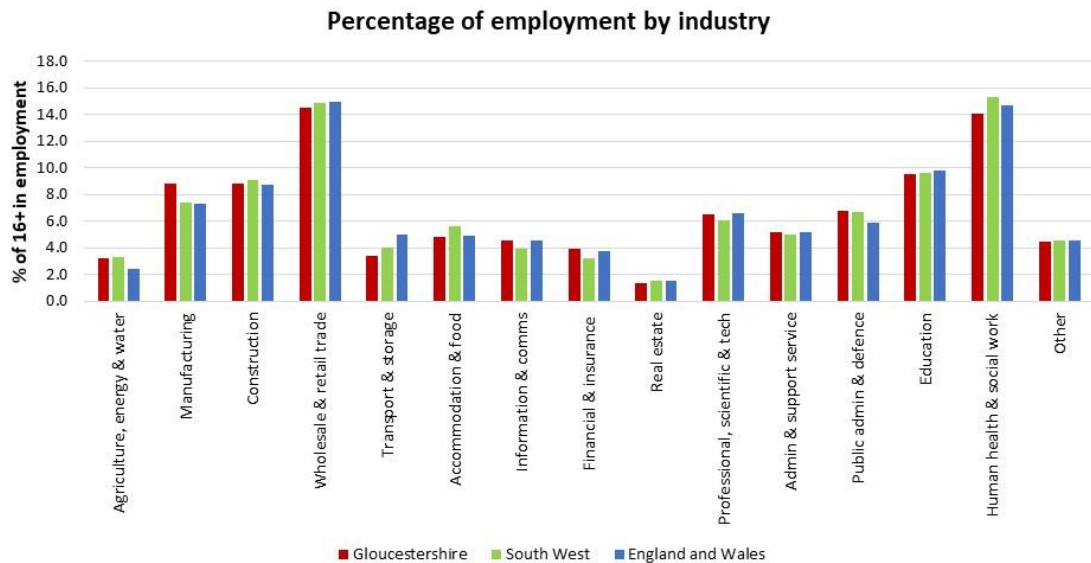
**Wholesale & retail trade was the largest sector**



**Human health & social work was the second largest sector**



**18.3% decline in employment in manufacturing**



Living our values every day



Accountable



Integrity



Empower



Respect



Excellence



# Occupation



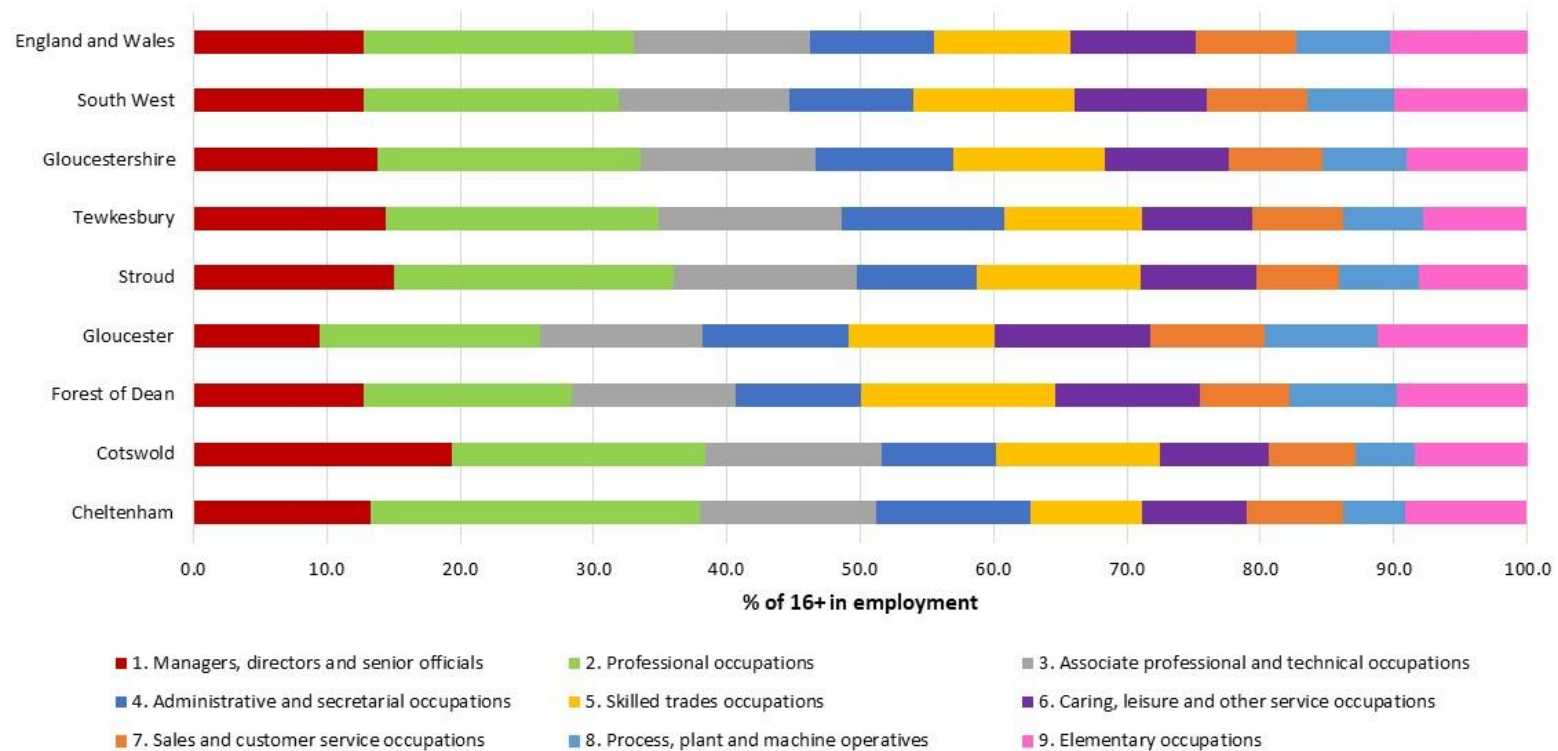
**19.7%** employed in professional occupations

**46.5%** employed in managerial, professional or associate professional occupations



**11.3%** employed in skilled trades

Percentage of employment by occupation, 2021



# Housing

Living our values every day



Accountable



Integrity



Empower



Respect



Excellence



# Tenure

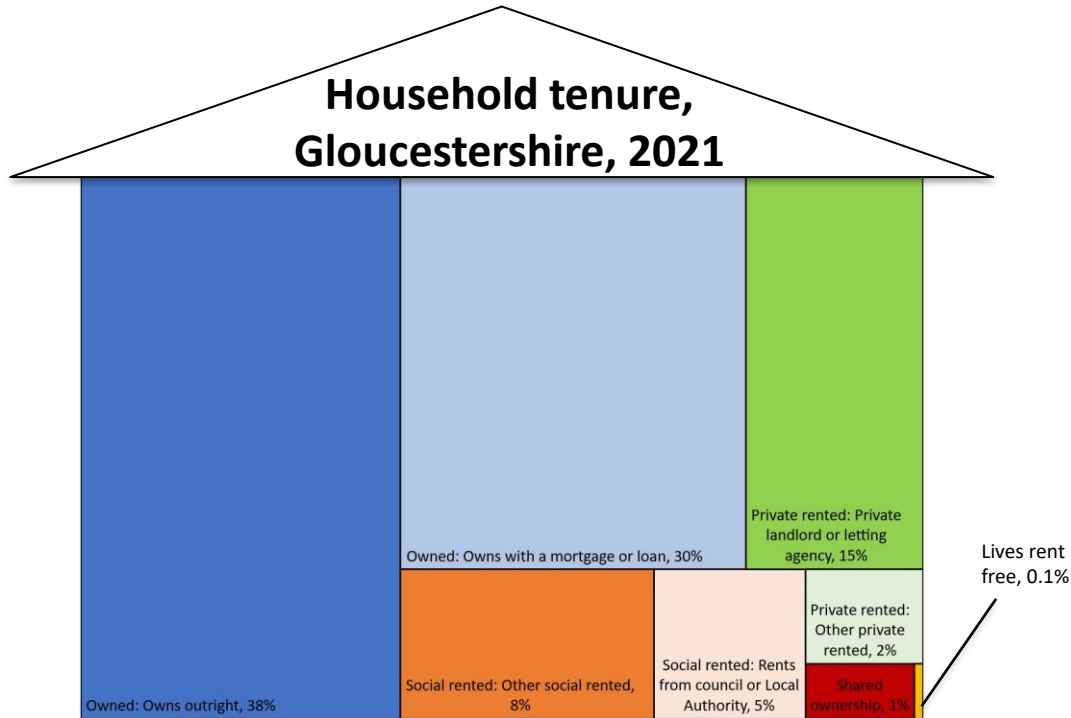


67.9% of households were owner occupied

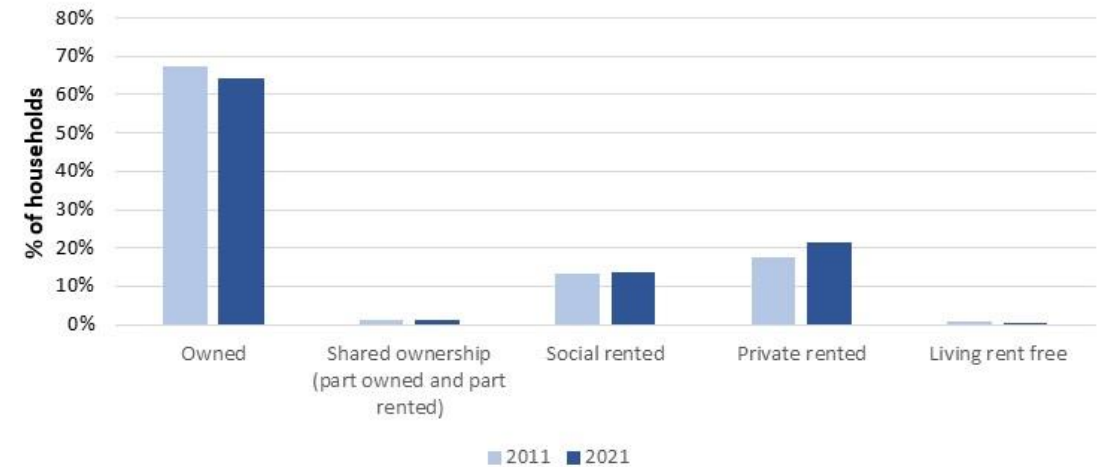
13.1% of households were social rented



25.7% increase in households which were private rented



### Proportion of Gloucestershire's households by household tenure, 2011 and 2021



Living our values every day



Accountable



Integrity



Empower



Respect



Excellence



# Household occupancy



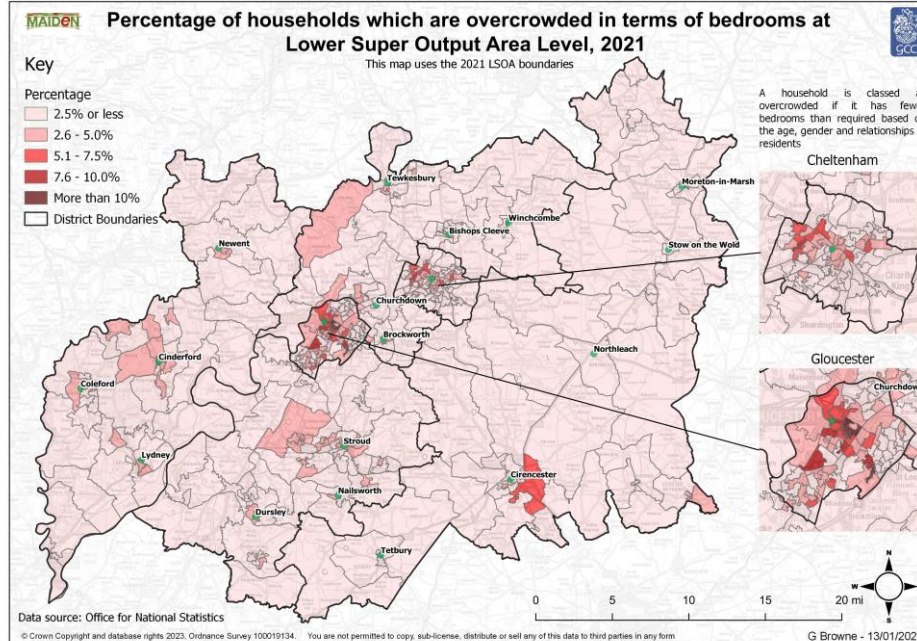
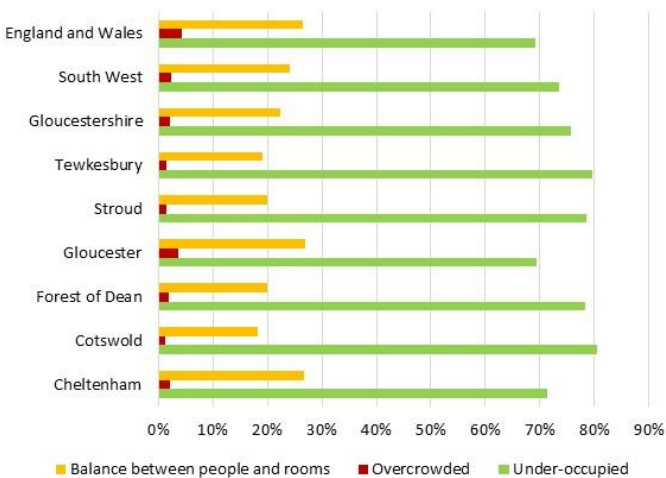
**75.8%** of households are under-occupied

**2.0%** of households are over occupied

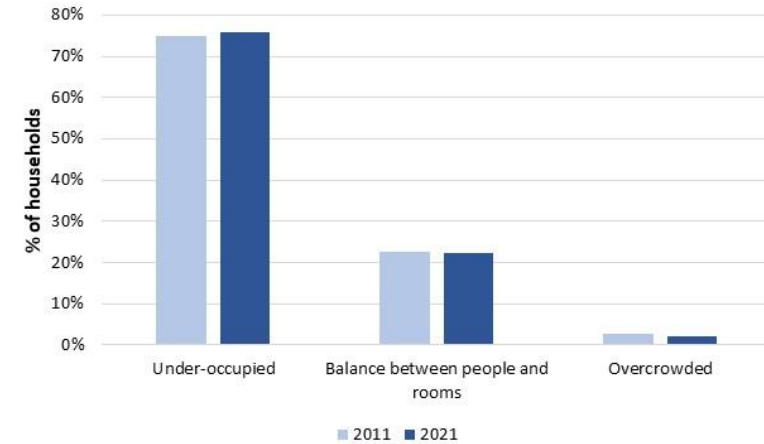


**16.0%** decline in overcrowded households

Percentage of households by occupancy (bedrooms), 2021



Proportion of Gloucestershire's households by occupancy (bedrooms), 2011 and 2021



Living our values every day



Accountable



Integrity



Empower



Respect



Excellence



# Household car ownership



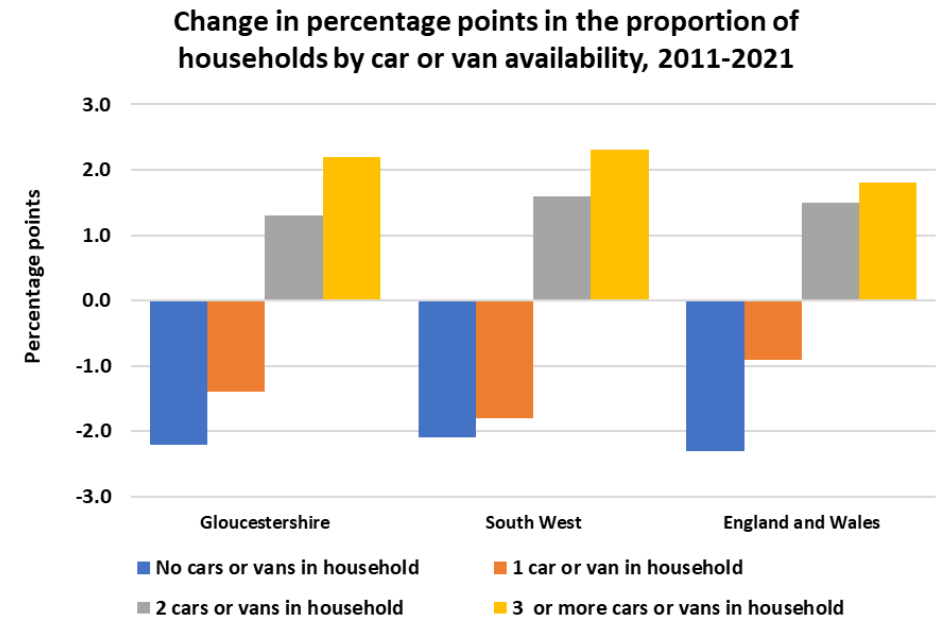
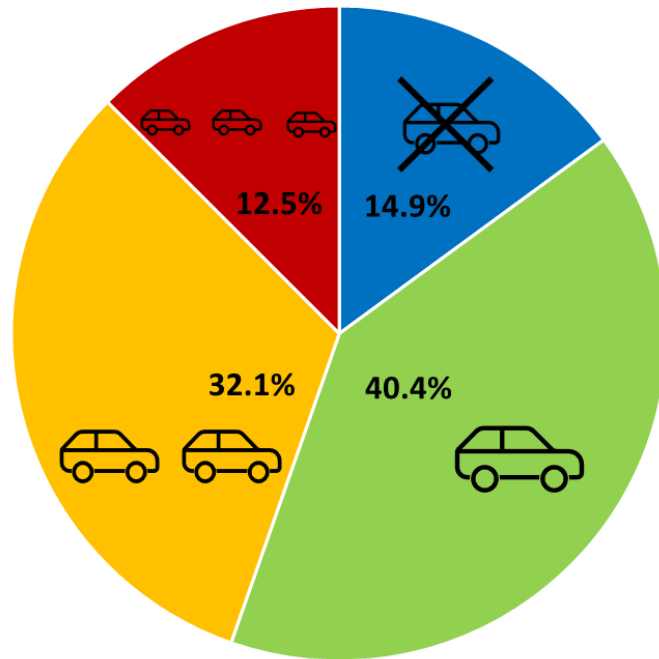
**14.9%** households did not own a car or van



**1 in 5** households owned one car



**11.7%** increase in car ownership between 2011-2021



# Central heating



1.2% of households had no central heating

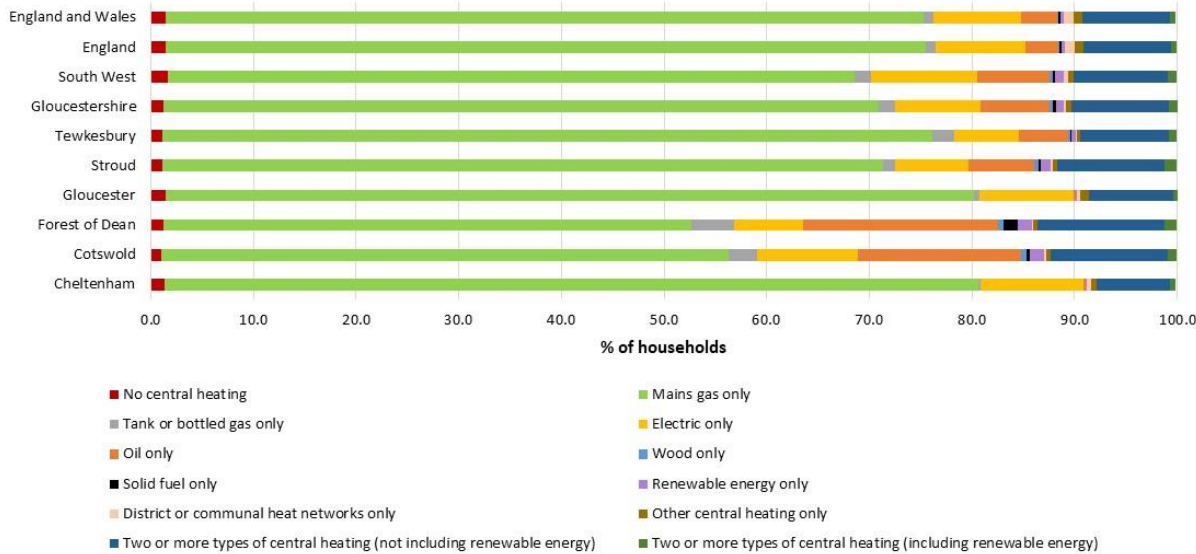


1.5% of households used renewable energy

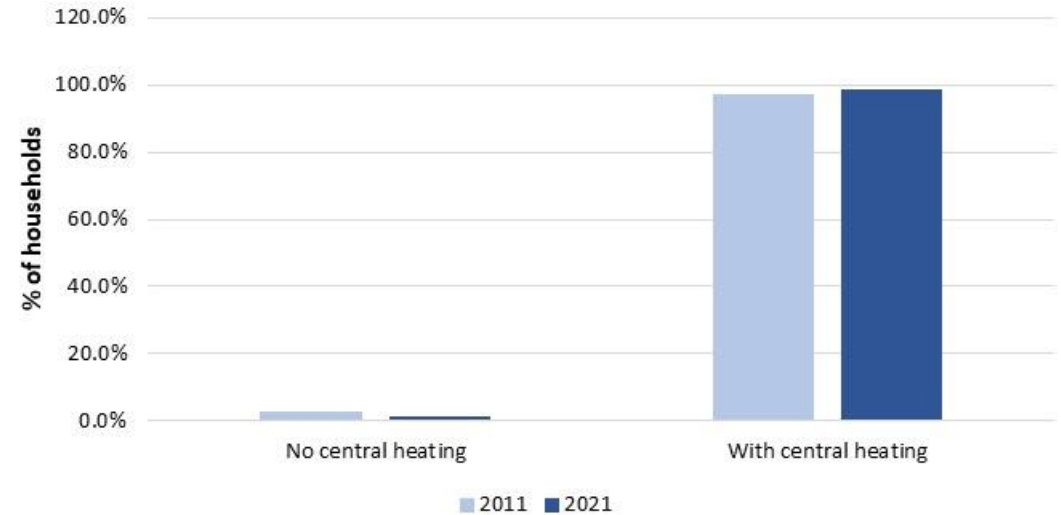


49.7% decrease in households without central heating

Percentage of households by types of central heating, 2021



Proportion of Gloucestershire's households by central heating, 2011 and 2021



Living our values every day



Accountable



Integrity



Empower



Respect





Excellence



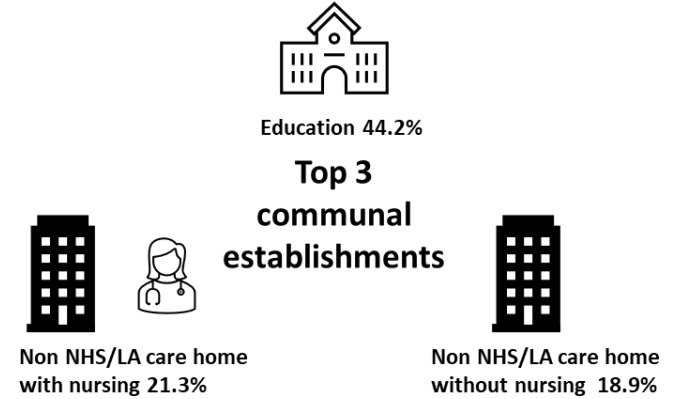
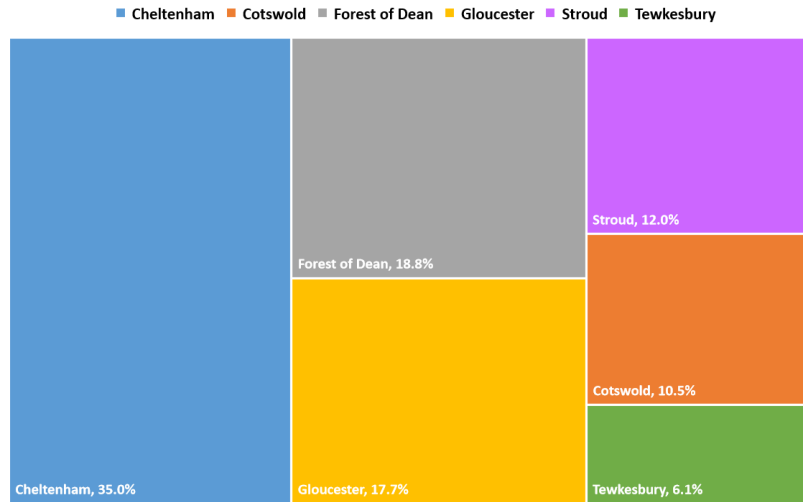
# Communal establishments

 **10,159** communal establishment residents

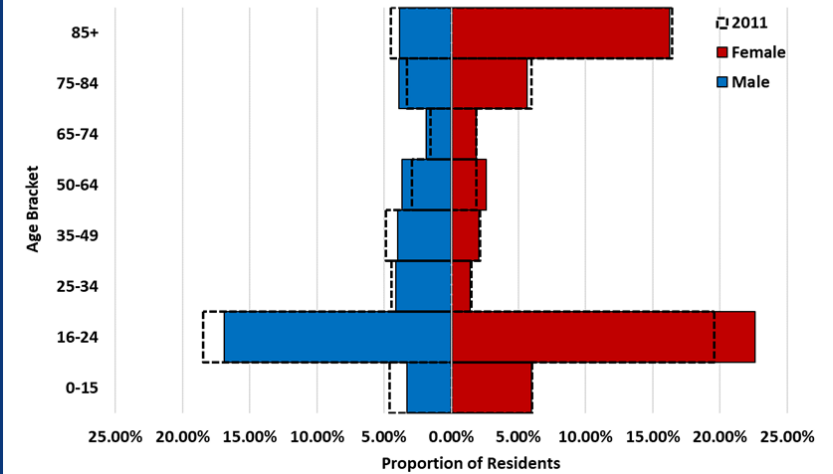
 **44.2%** residents lived in education establishments

 **3/5** residents are female

Distribution of communal establishment residents by district



Proportion of Residents Living in Communal Establishments by Sex and Age Bracket in Gloucestershire, 2011 and 2021



Living our values every day




Accountable



Integrity



Empower



Respect



Excellence

