

# Unemployment Bulletin

Issue 86 September 2015

## Contents

### Part 1: Summary - Estimated Claimant Count\*

A summary of claimants of Job Seekers Allowance and Universal Credit claimants who are not in work

1

### Part 2: Summary - Job Seekers Allowance

A summary of Job Seekers Allowance claimants at District, County, regional and national level

3

### Part 3: Job Seekers Allowance - County

Job Seekers Allowance claimant figures for the County compared to the South West and the rest of the UK

### Part 4: Job Seekers Allowance - Districts

A comparative break down of Job Seekers Allowance claimants by district

4

### Part 5: Job Seekers Allowance - Wards

Further breakdown of Job Seekers Allowance by ward:

Cheltenham

6

Cotswolds

8

Forest of Dean

10

Gloucester

12

Stroud

14

Tewkesbury

16

### Part 6: Job Seekers Allowance - Map

Distribution of Job Seekers Allowance claimants across Gloucestershire

18

### Part 7: Job Seekers Allowance - Youth Unemployment

18-24 year olds claiming Job Seekers Allowance

20

### Part 8: Young People

Data about Young People Not in Education, Employment or Training (NEET)

22

## INTRODUCTION

The Unemployment Bulletin provides a monthly update on unemployment data for Gloucestershire, the South West region and Great Britain/United Kingdom. It is produced by the Strategic Needs Analysis Team in the County Council's Strategy and Challenge function.

From 1996 until the recent introduction of Universal Credit, unemployment data was based on the number of people claiming Job Seekers Allowance. However, since its introduction some unemployment benefit claimants will be claiming Universal Credit instead. For more information about Universal Credit please see the [ONS website](#).

To reflect this change the Unemployment Bulletin will include two measures:

- **Estimated Claimant Count\*** - combines claimants of Job Seekers Allowance and Universal Credit Claimants who are not in work. This information is included in Part 1 of the unemployment bulletin and provides the broadest measure of unemployment at a County and District level.
- **Job Seekers Allowance claimants only** - this information is included in Parts 2 – 7 of the unemployment bulletin. It gives a narrower estimate of unemployment, and is the only measure available at ward level and that can be broken down by age.

Statistics about Job Seeker's Allowance claimants are sourced from the Office for National Statistics via Nomis ([www.nomis.co.uk](http://www.nomis.co.uk)) and Universal Credit statistics are provided by the Department for Work and Pensions.

## PART 1: Summary - Estimated Claimant Count\*

The estimated claimant rate\* in Gloucestershire was **1.1% in September 2015**. This was the same as the August 2015 figure. The South West rate also remained the same at 1.1%, while the GB rate decreased to 1.8%. Gloucestershire's rate was the same as the South West average of 1.1%, and 0.7% lower than the GB average of 1.8%.

The estimated claimant count\* in Gloucestershire in September 2015 **increased by 18 people**. The amount of people claiming in August 2015 was 0.4% higher than the number in August 2015. This compares to a 1.7% increase in the South West and a -1.1% decrease for GB.

Produced by:

**Strategic Needs Analysis Team**  
Strategy and Challenge  
Gloucestershire County Council  
October 2015

\* Please note the estimated Claimant Count combines claimants of Job Seekers Allowance and Universal Credit who are not in work. This includes a small number of people who are not in work but not required to seek work

Source: ONS Crown Copyright Reserved

## Estimated Claimant Count\* - Districts at a Glance

At a glance estimated claimant count\* information grouped by district. Includes:

**Estimated claimant count\*:** Total number of people claiming Job Seekers Allowance and Universal Credit who are not in work in September 2015

**Compared to last month:** How much larger/smaller September's estimated claimant count\* is compared to August, expressed as a %

**Estimated claimant rate\*:** The % of working population claiming Job Seekers Allowance and Universal Credit who are not in work in September 2015

### CHELTENHAM BOROUGH

Estimated claim count\*: 755  
Compared to last month: -3.2%  
Estimated claimant rate\*: 1.0%

### GLOUCESTER CITY

Estimated claim count\*: 1,367  
Compared to last month: +4.0%  
Estimated claimant rate\*: 1.7%

### COTSWOLD DISTRICT

Estimated claim count\*: 326  
Compared to last month: -2.1%  
Estimated claimant rate\*: 0.6%

### STROUD DISTRICT

Estimated claim count\*: 492  
Compared to last month: +1.7%  
Estimated claimant rate\*: 0.7%

### FOREST OF DEAN

Estimated claim count\*: 568  
Compared to last month: -1.6%  
Estimated claimant rate\*: 1.1%

### TEWKESBURY BOROUGH

Estimated claim count\*: 516  
Compared to last month: -0.2%  
Estimated claimant rate\*: 1.0%

Between August 2015 and September 2015 the estimated claimant rate\* in Gloucester and Stroud increased, while the rate in the remaining districts stayed the same.

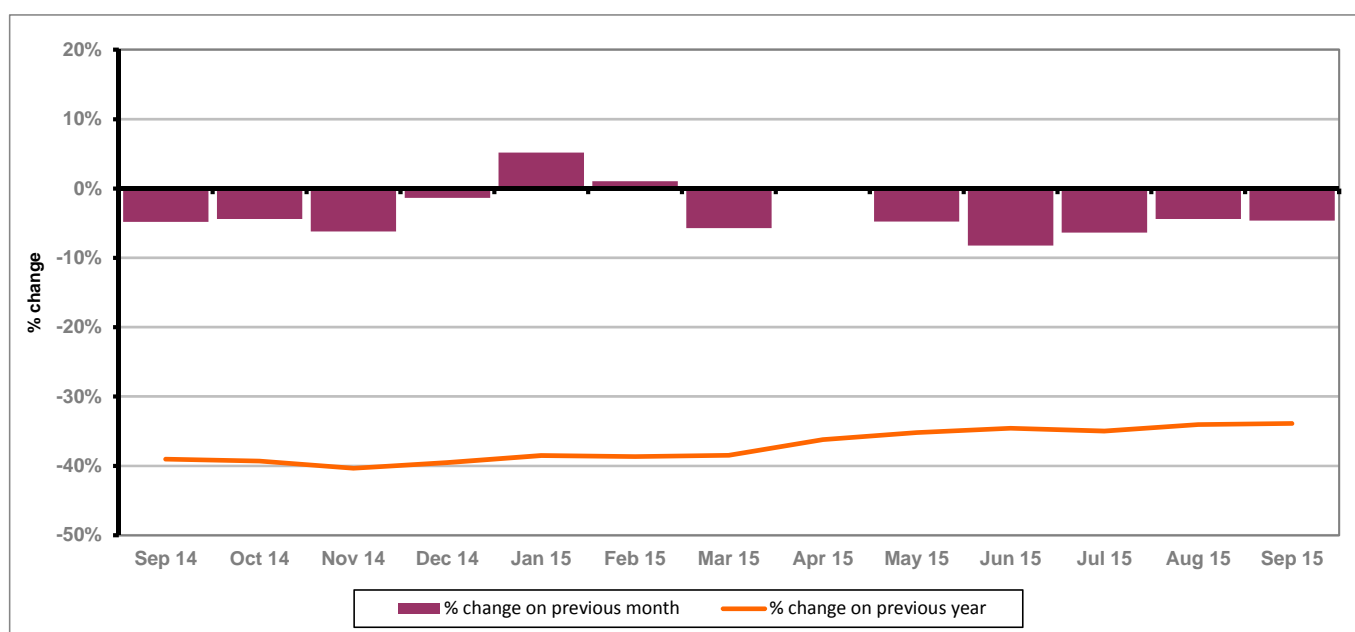
## PART 2: Summary - Job Seekers Allowance

The Jobseekers Allowance claimant rate in Gloucestershire was 0.9% in September 2015. This was a 0.1% decrease on the August 2015 figure. The UK rate and South West remained the same as the August 2015 figure at 1.7% and 1.0% respectively. Gloucestershire's rate was 0.1% lower than the South West average of 1.0%, and 0.8% lower than the UK average of 1.7%.

The number of people claiming Job Seekers Allowance in Gloucestershire in September 2015 decreased by 167 people. The amount of people claiming in September 2015 was 4.6% lower than the number in August 2015. This compares to a 1.2% decrease in the South West and a 3.3% decrease for the UK.

The year on year Job Seekers Allowance claimant count in Gloucestershire has increased since last month. The count was 33.9% lower in September 2015 than at the same point in the previous year as shown in the graph below.

Gloucestershire Job Seekers Allowance claimants - Month on Month and Year on Year change: September 2014 to September 2015



## Job Seekers Allowance - Districts at a Glance

At a glance Job Seekers Allowance information grouped by district. Includes:

**Claim count:** Total number of people claiming Job Seekers Allowance in September 2015

**Compared to last month:** How much larger/smaller September's Job Seekers Allowance claimant count is compared to August, expressed as a %

**Claimant rate:** The % of working population claiming Job Seekers Allowance in September 2015

**Highest claiming ward:** The ward with the highest Job Seekers Allowance claim count in that district and the rate

### CHELTENHAM BOROUGH

JSA Claim count:	607
Compared to last month:	-10.3%
JSA Claimant rate:	0.8%
Highest claiming ward	Oakley (1.7%)

### GLOUCESTER CITY

JSA Claim count:	1,245
Compared to last month:	-0.2%
Claimant rate:	1.5%
Highest claiming ward	Westgate (3.7%)

### COTSWOLD DISTRICT

JSA Claim count:	273
Compared to last month:	-6.8%
JSA Claimant rate:	0.5%
Highest claiming ward	Cirencester Watermoor (1.3%)

### STROUD DISTRICT

JSA Claim count:	391
Compared to last month:	-6.9%
JSA Claimant rate:	0.6%
Highest claiming ward	Slade (1.7%)

### FOREST OF DEAN

JSA Claim count:	469
Compared to last month:	-6.2%
JSA Claimant rate:	0.9%
Highest claiming ward	Cinderford West (2.1%)

### TEWKESBURY BOROUGH

JSA Claim count:	463
Compared to last month:	-2.9%
JSA Claimant rate:	0.9%
Highest claiming ward	Tewkesbury Prior's Park (2.6%)

## PART 3: Job Seekers Allowance - County

The Job Seekers Allowance situation in Gloucestershire compared to the South West and the UK.

### Job Seekers Allowance claimant rate

Figure 1: Job Seekers Allowance claimant rate for Gloucestershire, the South West and UK over the past year

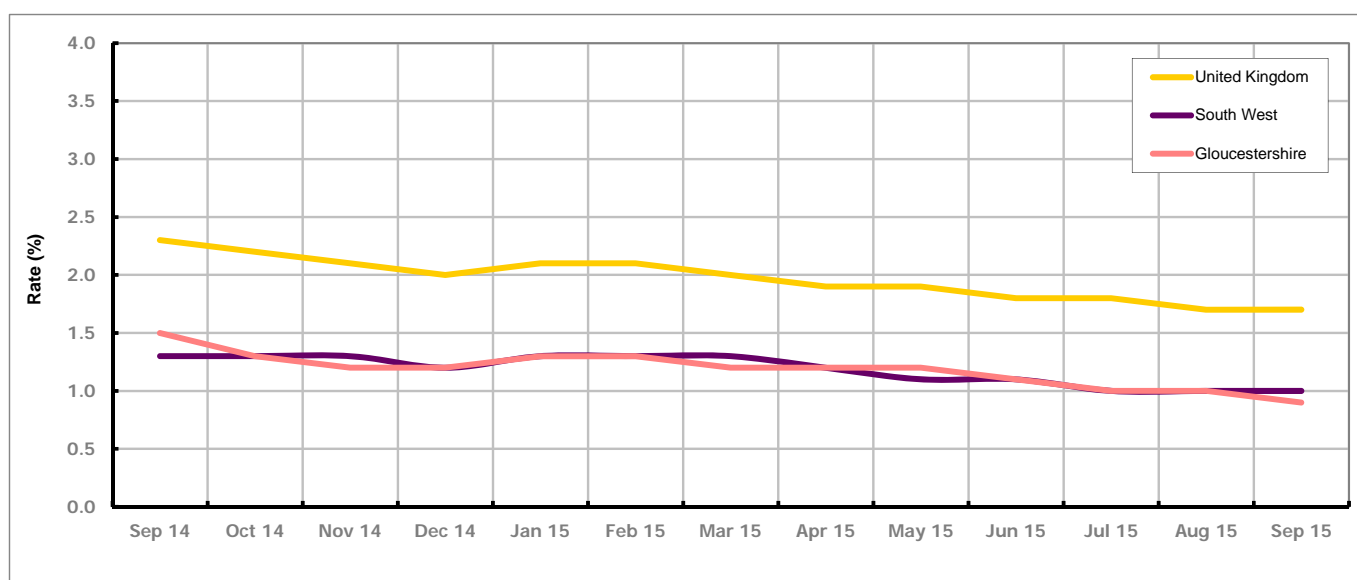


Figure 1 shows the Job Seekers Allowance claimant rate for Gloucestershire at 0.9% in September 2015. The Gloucestershire rate has been the same as the South West average since October 2014, with the exception of November, March and September 2015 when it was lower and May when it was higher. It has been persistently lower by approximately 0.8% against the UK average. The September 2015 rate represented a 0.1% decrease on August 2015.

### Job Seekers Allowance claimant count

Table 1: Analysis of UK, South West and Gloucestershire Job Seekers Allowance claimant count

Area	Job Seekers Allowance claimant count in September 2015	% change on August 2015	Average % change over the last six months	Consecutive months decreasing
UK	685,456	-3.3%	-2.5%	6
South West	32,990	-1.2%	-2.9%	6
Gloucestershire	3,448	-4.6%	-4.8%	6

Table 1 shows that in September 2015, the number of Job Seekers Allowance claimants in Gloucestershire was 4.6% lower than the number in August 2015.

The average change in Job Seekers Allowance claimants in Gloucestershire for the six months to September 2015 was -4.8%.

## PART 4: Job Seekers Allowance - Districts

### Job Seekers Allowance claimant rate and claimant count

Figure 2: Job Seekers Allowance claimant rate (%) across Gloucestershire - September 2015

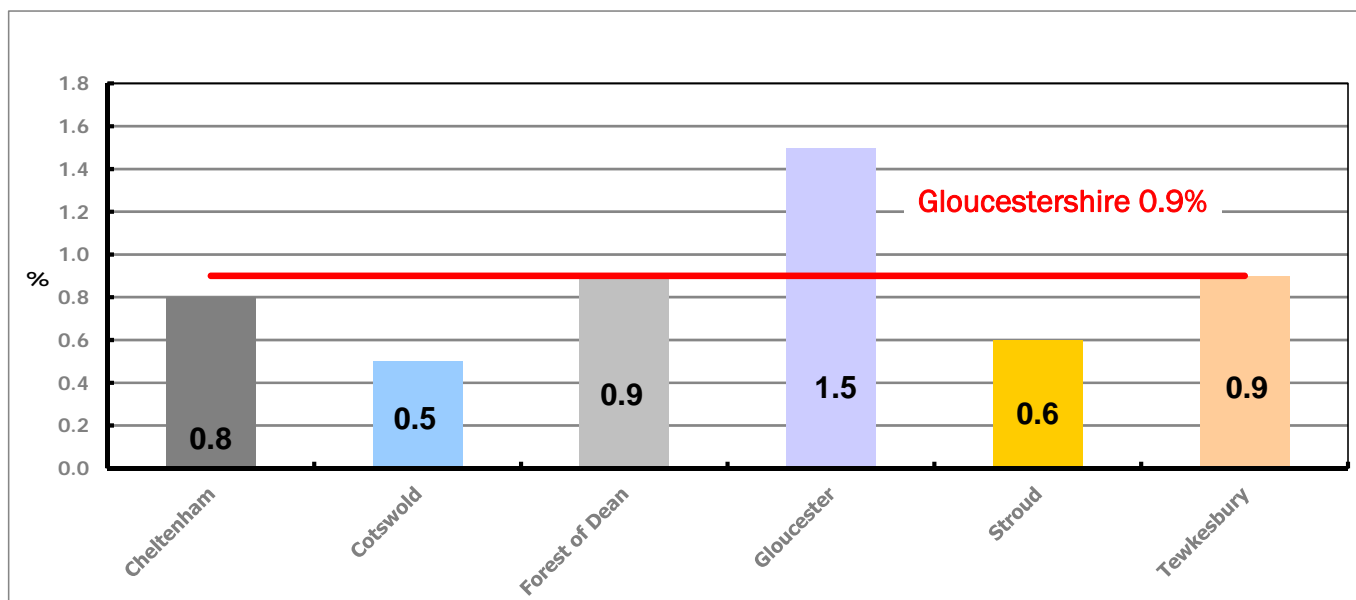


Figure 2 shows the Job Seekers Allowance claimant rate for September 2015 in Gloucestershire. Between August 2015 and September 2015, the rate in Cheltenham, Cotswold and Forest of Dean declined, while the rate in the remaining three districts stayed the same.

Figure 3: Total Job Seekers Allowance claimants over the past year across Districts

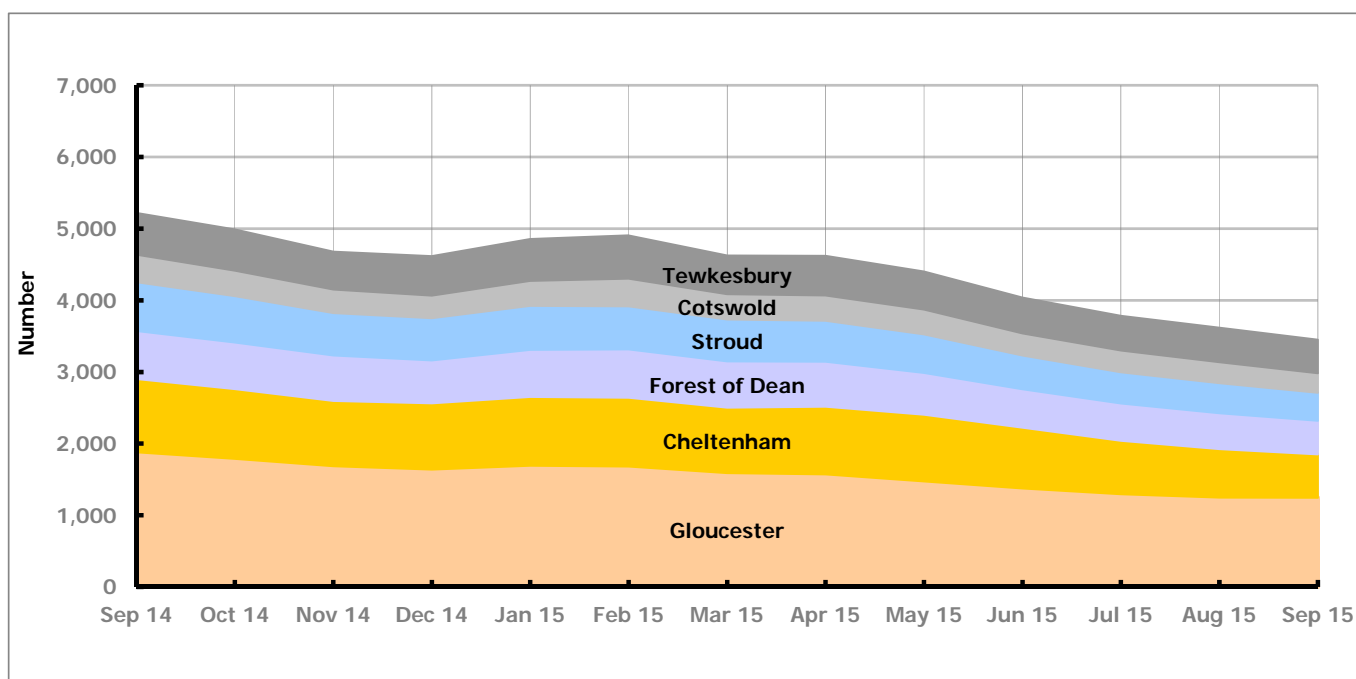


Figure 3 shows the overall Job Seekers Allowance claimant count by district over the past year. The number of claimants has decreased over the last year, with the exception of January, February and April 2015 when there was an increase.

Table 2: Analysis of Gloucestershire and District Job Seekers Allowance claimant counts

Total	Sep 15 Number	Sep 15 Rate	Aug 15 Number	Aug 15 Rate	Monthly change	% monthly change	Monthly change of rate
<b>Gloucestershire</b>	3,448	0.9	3,615	1.0	-167	-4.6%	-0.1
Cheltenham	607	0.8	677	0.9	-70	-10.3%	-0.1
Cotswold	273	0.5	293	0.6	-20	-6.8%	-0.1
Forest of Dean	469	0.9	500	1.0	-31	-6.2%	-0.1
Gloucester	1,245	1.5	1,248	1.5	-3	-0.2%	0.0
Stroud	391	0.6	420	0.6	-29	-6.9%	0.0
Tewkesbury	463	0.9	477	0.9	-14	-2.9%	0.0

Table 2 shows the change in the Job Seekers Allowance claimant count in September 2015 compared to August 2015. All districts saw a decline in the number of claimants.

Table 3: Analysis of Male Gloucestershire and District Job Seekers Allowance claimant counts

Male	Sep 15 Number	Sep 15 Rate	Aug 15 Number	Aug 15 Rate	Monthly change	% monthly change	Monthly change of rate
<b>Gloucestershire</b>	2,187	1.2	2,299	1.2	-112	-4.9%	0.0
Cheltenham	380	1.0	409	1.1	-29	-7.1%	-0.1
Cotswold	158	0.6	175	0.7	-17	-9.7%	-0.1
Forest of Dean	296	1.2	314	1.2	-18	-5.7%	0.0
Gloucester	838	2.1	842	2.1	-4	-0.5%	0.0
Stroud	229	0.7	259	0.7	-30	-11.6%	0.0
Tewkesbury	286	1.1	300	1.2	-14	-4.7%	-0.1

Table 3 shows the change in the male Job Seekers Allowance claimant count in September 2015 compared to August 2015. All districts saw a decline in the number of male claimants.

Table 4: Analysis of Female Gloucestershire and District Job Seekers Allowance claimant counts

Female	Sep 15 Number	Sep 15 Rate	Aug 15 Number	Aug 15 Rate	Monthly change	% monthly change	Monthly change of rate
<b>Gloucestershire</b>	1,261	0.7	1,316	0.7	-55	-4.2%	0.0
Cheltenham	227	0.6	268	0.7	-41	-15.3%	-0.1
Cotswold	115	0.4	118	0.5	-3	-2.5%	-0.1
Forest of Dean	173	0.7	186	0.7	-13	-7.0%	0.0
Gloucester	407	1.0	406	1.0	1	0.2%	0.0
Stroud	162	0.5	161	0.5	1	0.6%	0.0
Tewkesbury	177	0.7	177	0.7	0	0.0%	0.0

Table 4 shows the change in the female Job Seekers Allowance claimant count in September 2015 compared to August 2015. Cheltenham, Cotswold and Forest of Dean saw a decrease in the number of female claimants, while Gloucester and Stroud experienced a slight increase. The number of Tewkesbury female claimants remained the same as last month.

## PART 5: Job Seekers Allowance - District and Ward

This section covers the six districts and a comparison of their constituent wards.

### 4.1 Cheltenham Borough

#### Job Seekers Allowance claimant rate and claimant count

Figure 4: Cheltenham Borough Job Seekers Allowance claimant rate over the last year

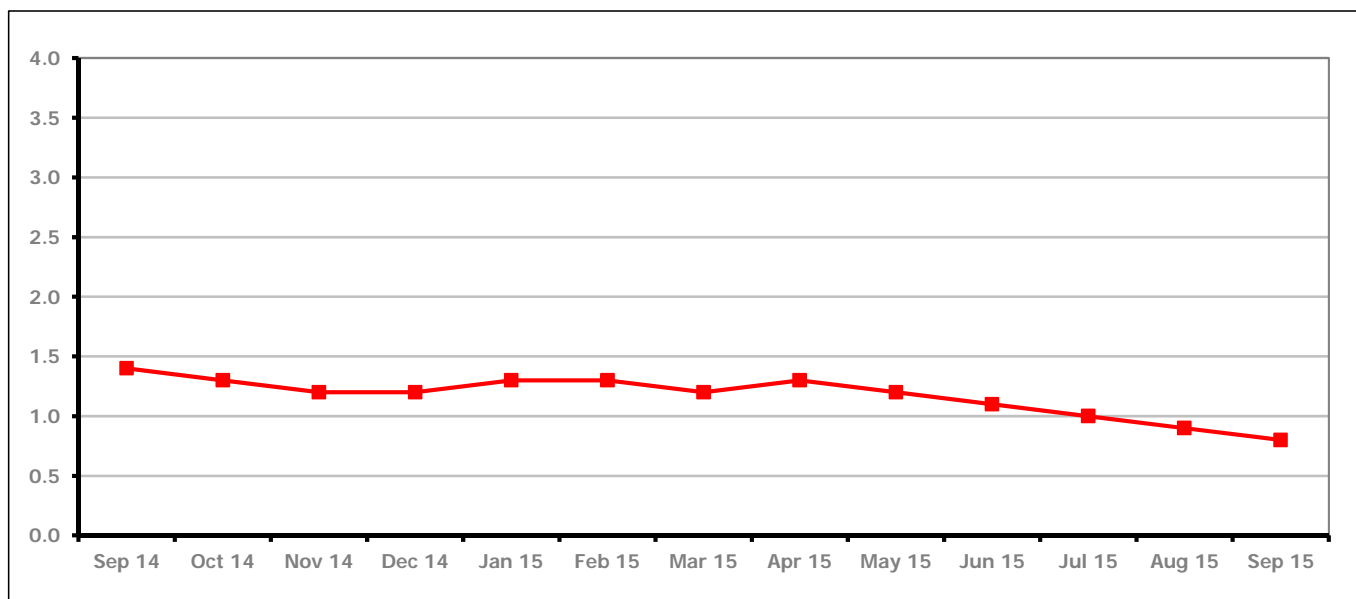


Figure 4 shows the Job Seekers Allowance claimant rate in Cheltenham decreased in September 2015 to 0.8%.

Figure 5: Cheltenham Borough Job Seekers Allowance claimants - Month on Month and Year on Year change

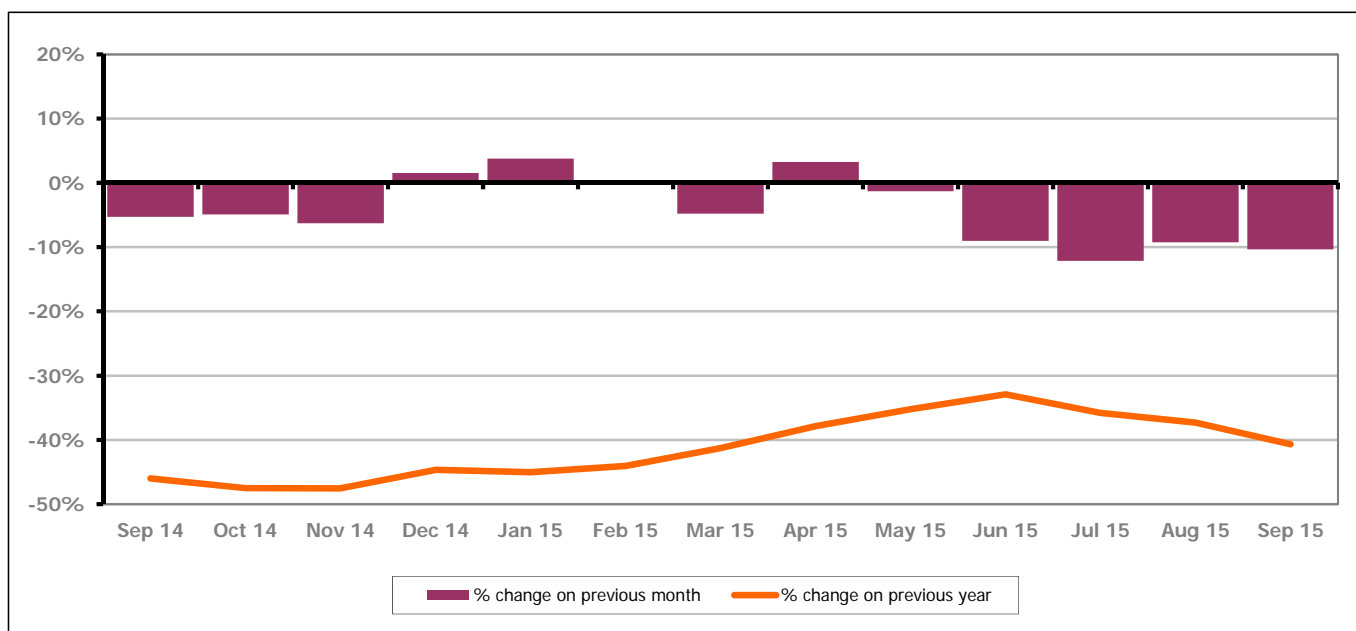


Figure 5 shows the Job Seekers Allowance claimant count decreased by 10.3% since last month. The change on the previous year has decreased between August and September 2015 to -40.7%.



## PART 5: Job Seekers Allowance - District and Ward

### 4.1 Cheltenham Borough continued...

Figure 6: Job Seekers Allowance Claimant rates across Cheltenham Borough wards - September 2015

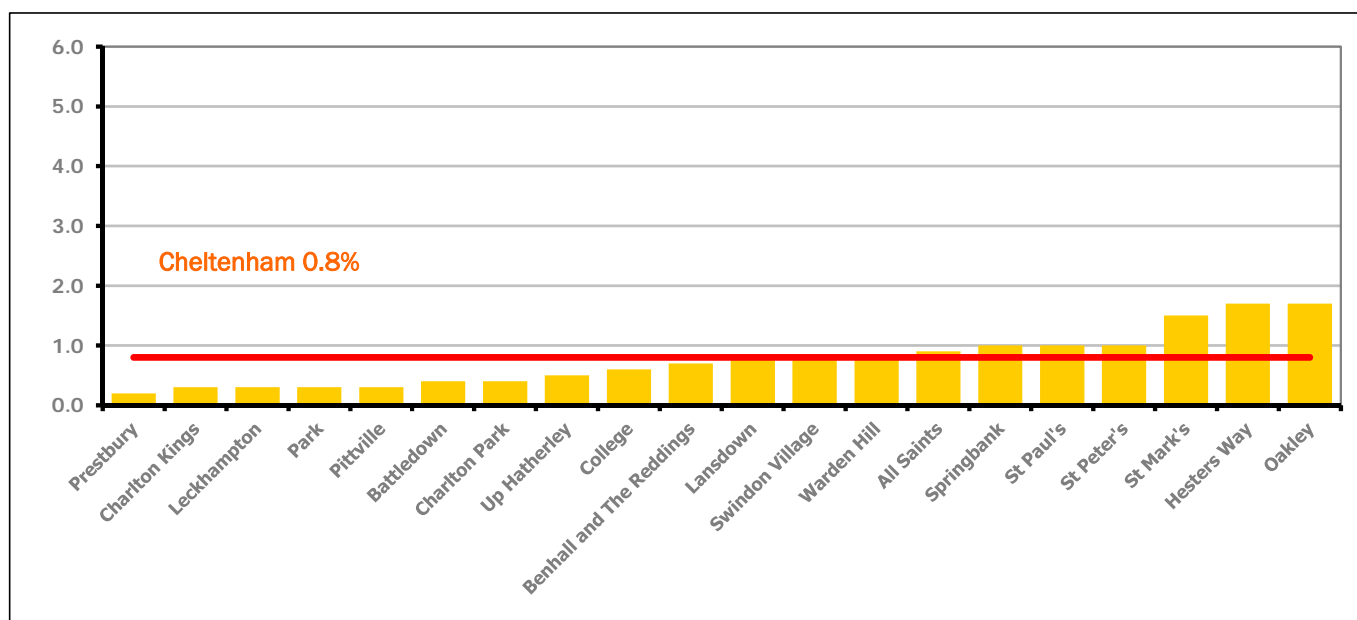


Figure 6 shows the Job Seekers Allowance claimant rates for Cheltenham Borough wards. The red line represents the average claimant rate across the Borough of 0.8%. Seven wards lie above the average.

Table 5: Analysis of Job Seekers Allowance claimant count at Cheltenham ward level - September 2015

District	Ward	Rate	Rank*
Cheltenham	Prestbury	0.2	9
Cheltenham	Charlton Kings	0.3	13
Cheltenham	Leckhampton	0.3	13
Cheltenham	Park	0.3	13
Cheltenham	Pittville	0.3	13
Cheltenham	Battledown	0.4	31
Cheltenham	Charlton Park	0.4	31
Cheltenham	Up Hatherley	0.5	49
Cheltenham	College	0.6	60
Cheltenham	Benhall and The Reddings	0.7	78
Cheltenham	Lansdown	0.8	90
Cheltenham	Swindon Village	0.8	90
Cheltenham	Warden Hill	0.8	90
Cheltenham	All Saints	0.9	102
Cheltenham	Springbank	1.0	110
Cheltenham	St Paul's	1.0	110
Cheltenham	St Peter's	1.0	110
Cheltenham	St Mark's	1.5	127
Cheltenham	Hesters Way	1.7	130
Cheltenham	Oakley	1.7	130

bottom 10% of county  
 first quartile of county  
 second quartile of county  
 third quartile of county  
 fourth quartile of county  
 highest 10% of county

\* 1 = "best" and 142 = "worst"

Table 5 shows overall Job Seekers Allowance claimant rates for Cheltenham Borough wards and their position relative to all wards in Gloucestershire.

## PART 5: Job Seekers Allowance - District and Ward

### 4.2 Cotswold District

#### Job Seekers Allowance claimant rate and claimant count

Figure 7: Cotswold District claimant rate over the last year

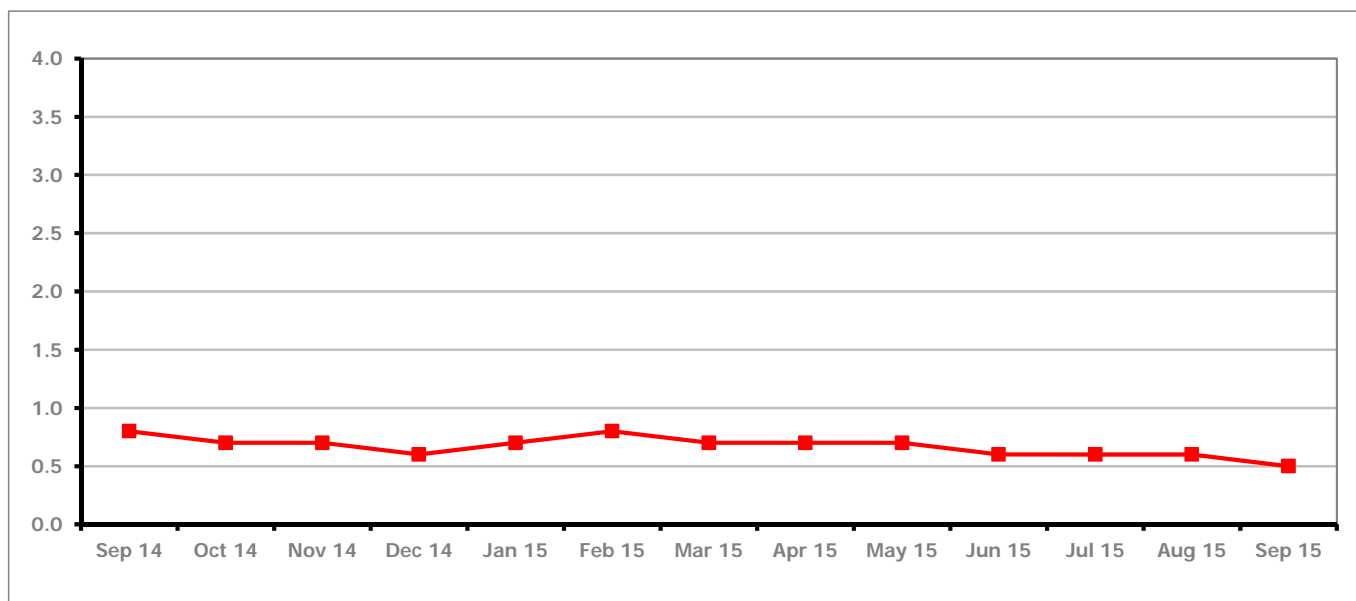


Figure 7 shows the Job Seekers Allowance claimant rate in Cotswold District decreased in September 2015 to 0.5%.

Figure 8: Cotswold District Job Seekers Allowance claimants - Month on Month and Year on Year change

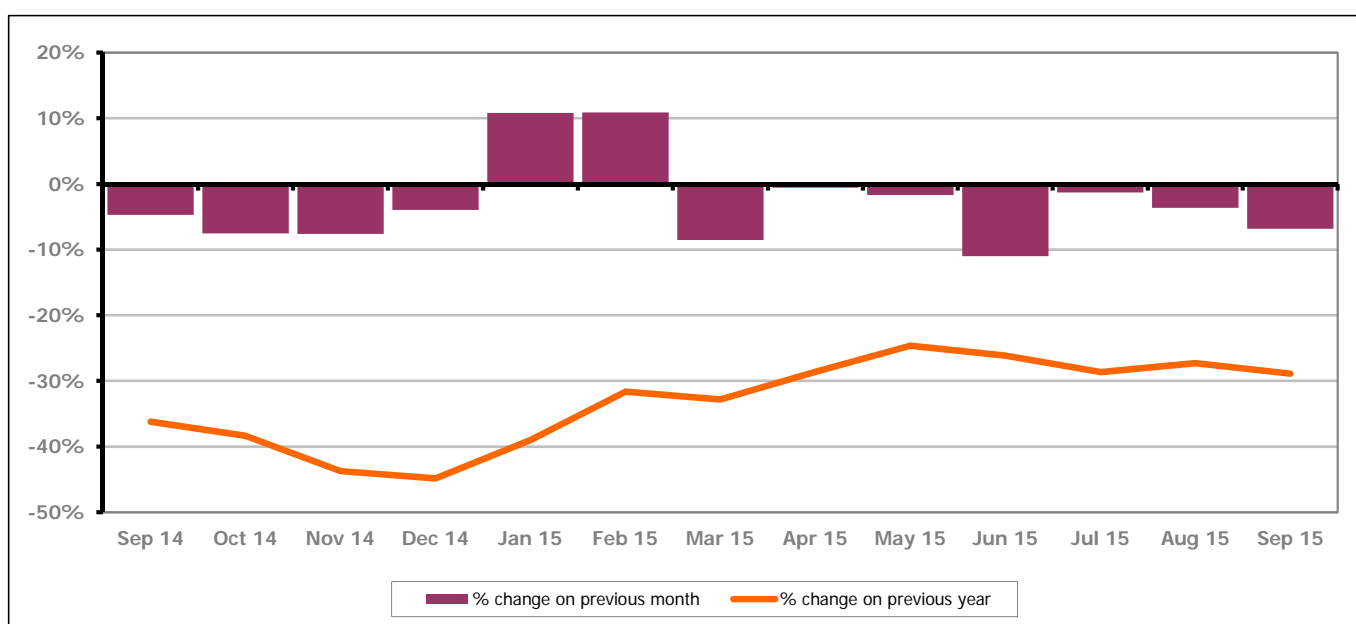


Figure 8 shows the Job Seekers Allowance claimant count decreased by 6.8% since August 2015. The change on the previous year has decreased between August and September 2015 to -28.9%.

## PART 5: Job Seekers Allowance - District and Ward

### 4.2 Cotswold District continued...

Figure 9: Job Seekers Allowance claimant rates across Cotswold District wards - September 2015

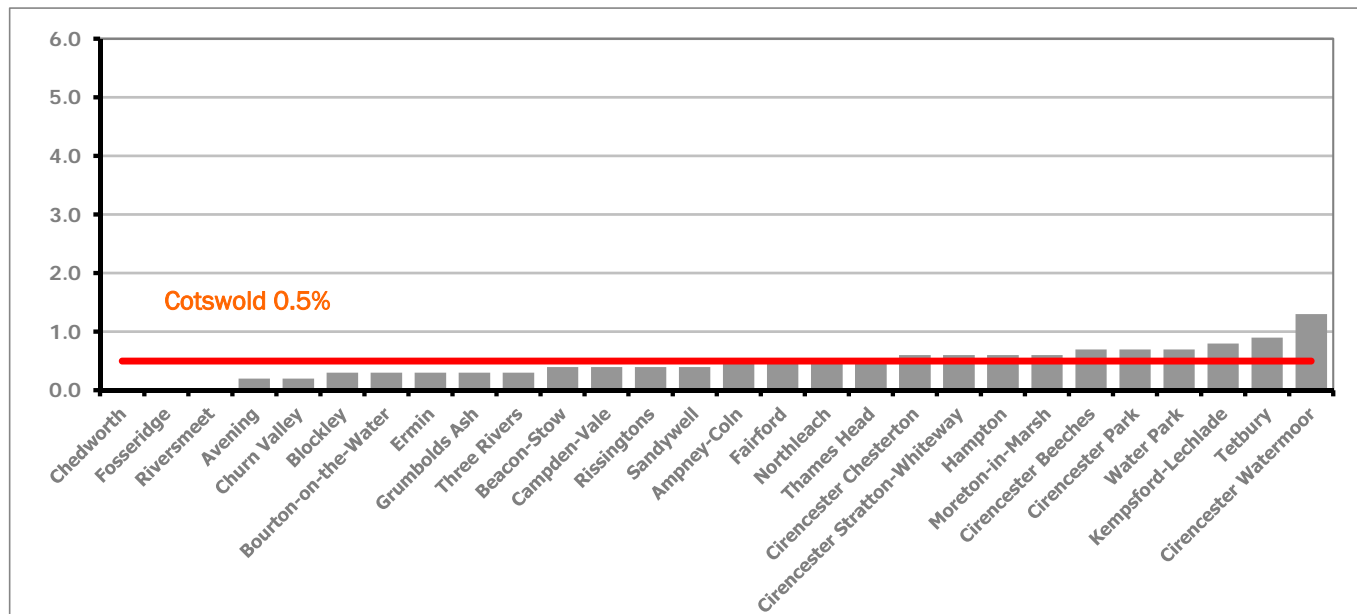
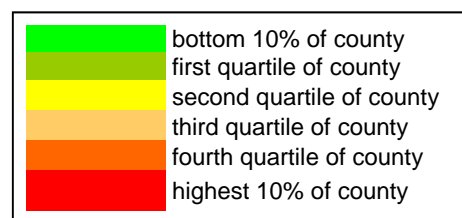


Figure 9 shows the Job Seekers Allowance claimant rates for Cotswold District wards. The red line represents the average claimant rate across the District of 0.5%. Ten wards lie above the average.

Table 6: Analysis of Job Seekers Allowance claimant count at Cotswold ward level - September 2015

District	Ward	Rate	Rank*
Cotswolds	Chedworth	<0.2	1
Cotswolds	Fosseridge	<0.2	1
Cotswolds	Riversmeet	<0.2	1
Cotswolds	Avening	0.2	9
Cotswolds	Churn Valley	0.2	9
Cotswolds	Blockley	0.3	13
Cotswolds	Bourton-on-the-Water	0.3	13
Cotswolds	Ermin	0.3	13
Cotswolds	Grumbolds Ash	0.3	13
Cotswolds	Three Rivers	0.3	13
Cotswolds	Beacon-Stow	0.4	31
Cotswolds	Campden-Vale	0.4	31
Cotswolds	Rissingtons	0.4	31
Cotswolds	Sandywell	0.4	31
Cotswolds	Ampney-Coln	0.5	49
Cotswolds	Fairford	0.5	49
Cotswolds	Northleach	0.5	49
Cotswolds	Thames Head	0.5	49
Cotswolds	Cirencester Chesterton	0.6	60
Cotswolds	Cirencester Stratton-Whiteway	0.6	60
Cotswolds	Hampton	0.6	60
Cotswolds	Moreton-in-Marsh	0.6	60
Cotswolds	Cirencester Beeches	0.7	78
Cotswolds	Cirencester Park	0.7	78
Cotswolds	Water Park	0.7	78
Cotswolds	Kempsford-Lechlade	0.8	90
Cotswolds	Tetbury	0.9	102
Cotswolds	Cirencester Watermoor	1.3	121



\* 1 = "best" and 142 = "worst"

Table 6 shows overall Job Seekers Allowance claimant rates for Cotswold District wards and their position relative to all wards in Gloucestershire.

## PART 5: Job Seekers Allowance - District and Ward

### 4.3 Forest of Dean District

#### Job Seekers Allowance claimant rate and claimant count

Figure 10: Forest of Dean District Job Seekers Allowance claimant rate over the last year

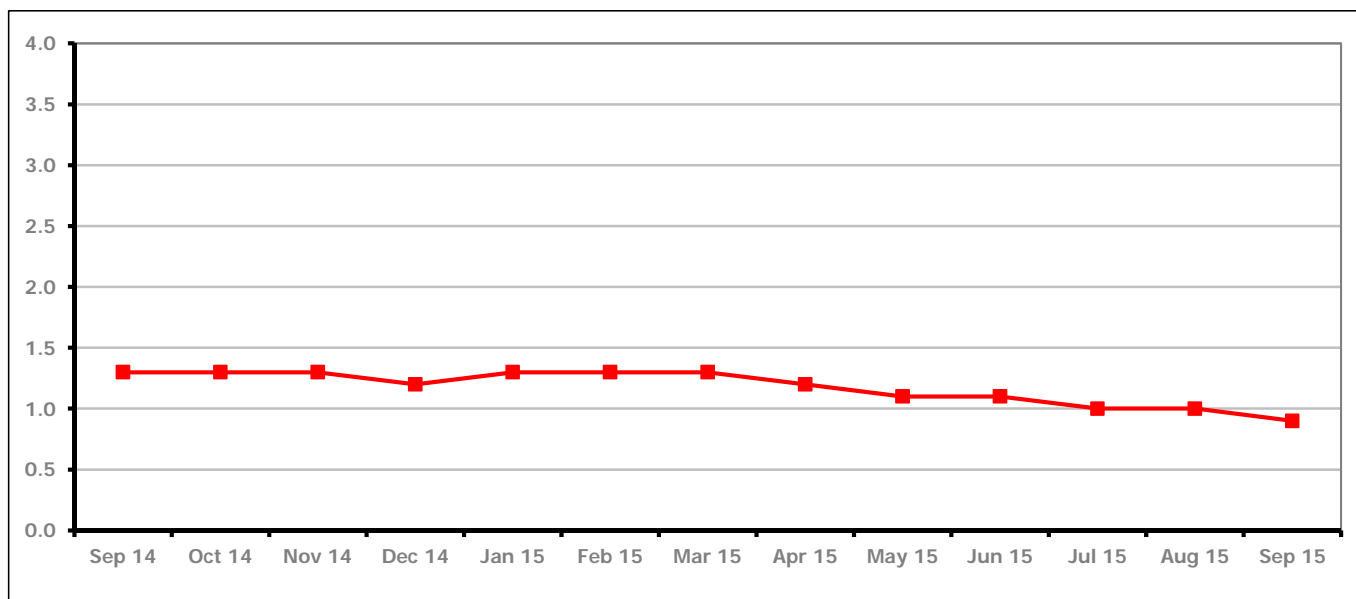


Figure 10 shows the Job Seekers Allowance claimant rate in the Forest of Dean decreased in September 2015 to 0.9%.

Figure 11: Forest of Dean District Job Seekers Allowance claimants - Month on Month and Year on Year change

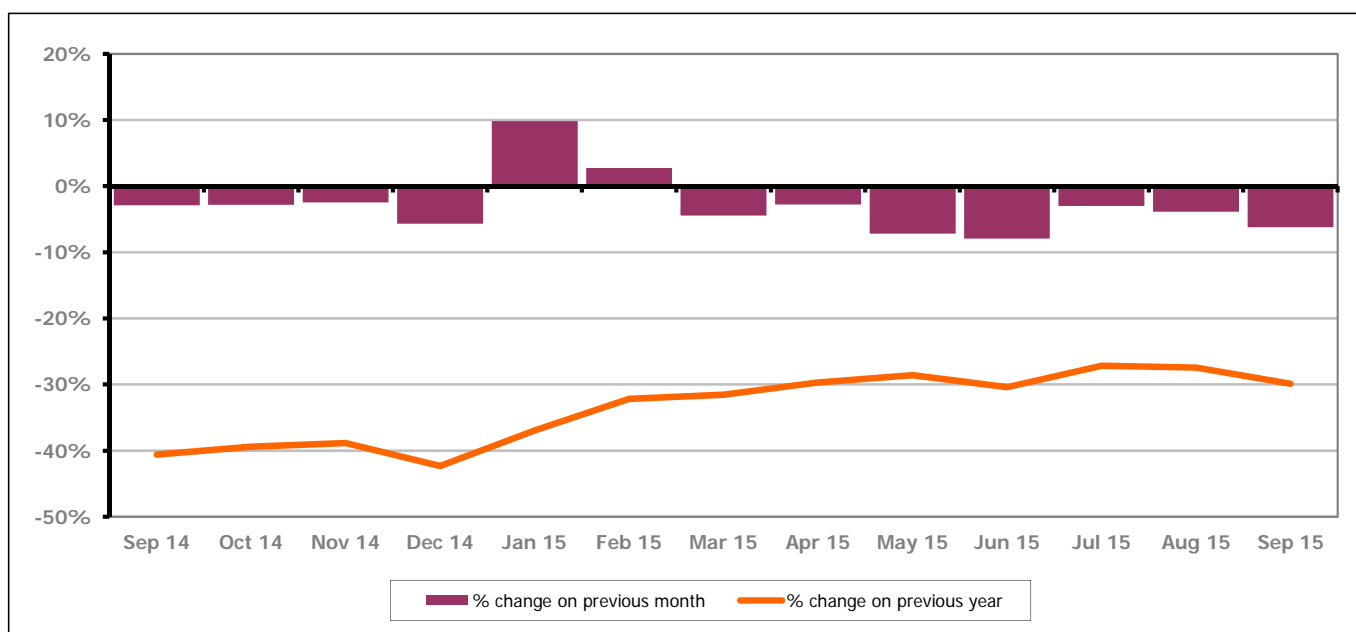


Figure 11 shows the Job Seekers Allowance claimant count decreased by 6.2% since August 2015. The change on the previous year has decreased between August and September 2015 to -29.9%.

## PART 5: Job Seekers Allowance - District and Ward

### 4.3 Forest of Dean District continued...

Figure 12: Job Seekers Allowance claimant rates across Forest of Dean District wards - September 2015

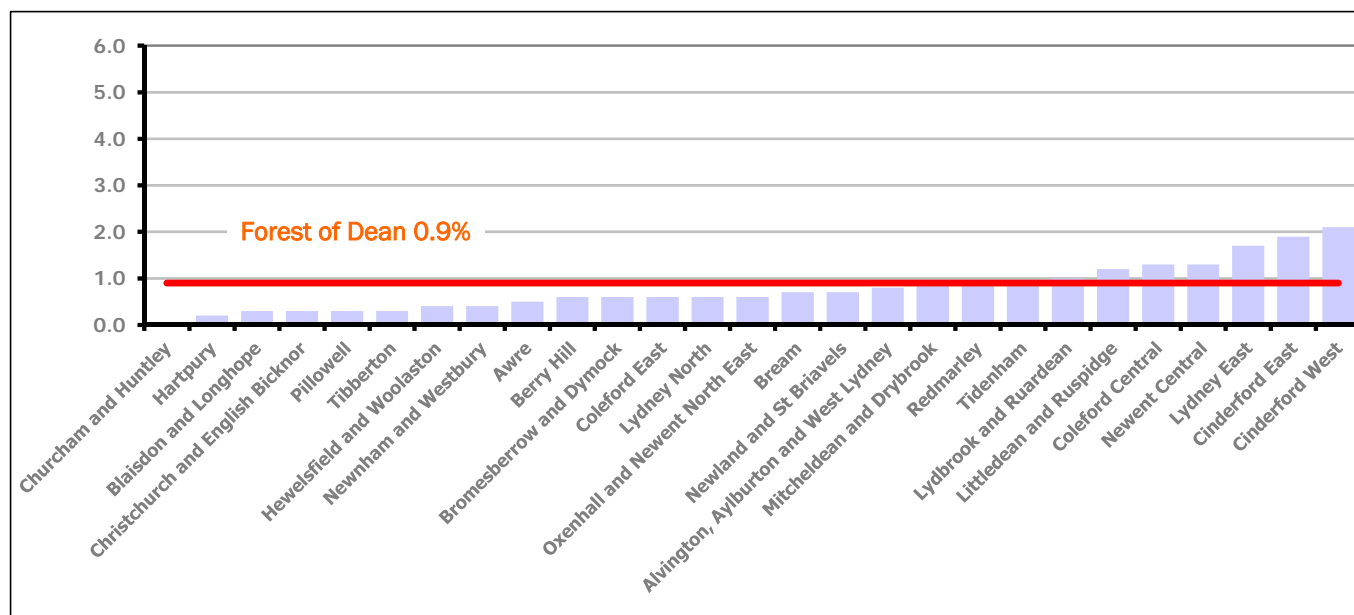
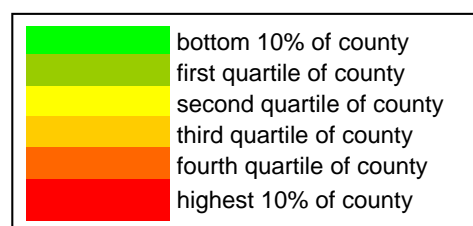


Figure 12 shows the Job Seekers Allowance claimant rates for Forest of Dean wards. The red line represents the average claimant rate across the District of 0.9%. Seven wards lie above the average.

Table 7: Analysis of Job Seekers Allowance claimant count at Forest of Dean ward level - September 2015

District	Ward	Rate	Rank*
Forest	Churcham and Huntley	<0.2	1
Forest	Hartpur	0.2	9
Forest	Blaisdon and Longhope	0.3	13
Forest	Christchurch and English Bicknor	0.3	13
Forest	Pillowell	0.3	13
Forest	Tibberton	0.3	13
Forest	Hewelsfield and Woolaston	0.4	31
Forest	Newnham and Westbury	0.4	31
Forest	Awre	0.5	49
Forest	Berry Hill	0.6	60
Forest	Bromesbrow and Dymock	0.6	60
Forest	Coleford East	0.6	60
Forest	Lydney North	0.6	60
Forest	Oxenhall and Newent North East	0.6	60
Forest	Bream	0.7	78
Forest	Newland and St Briavels	0.7	78
Forest	Alvington, Aylburton and West Lydney	0.8	90
Forest	Mitcheldean and Drybrook	0.9	102
Forest	Redmarley	0.9	102
Forest	Tidenham	0.9	102
Forest	Lydbrook and Ruardean	1.0	110
Forest	Littledean and Ruspidge	1.2	120
Forest	Coleford Central	1.3	121
Forest	Newent Central	1.3	121
Forest	Lydney East	1.7	130
Forest	Cinderford East	1.9	135
Forest	Cinderford West	2.1	136



\* 1 = "best" and 142 = "worst"

Table 7 shows overall Job Seekers Allowance claimant rates for the Forest of Dean District wards and their position relative to all wards in Gloucestershire.

## PART 5: Job Seekers Allowance - District and Ward

### 4.4 Gloucester City

#### Job Seekers Allowance claimant rate and claimant count

Figure 13: Gloucester City Job Seekers Allowance claimant rate over the last year

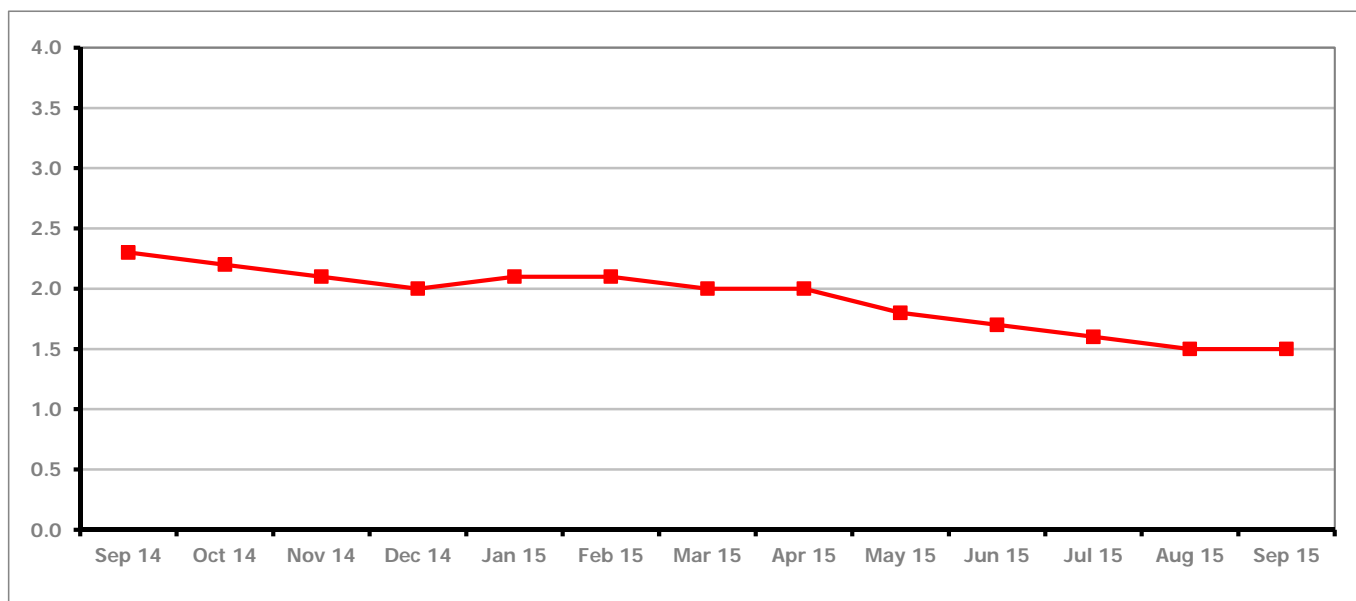


Figure 13 shows the Job Seekers Allowance claimant rate for Gloucester City remained the same as last month at 1.5%.

Figure 14: Gloucester City Job Seekers Allowance claimants - Month on Month and Year on Year change

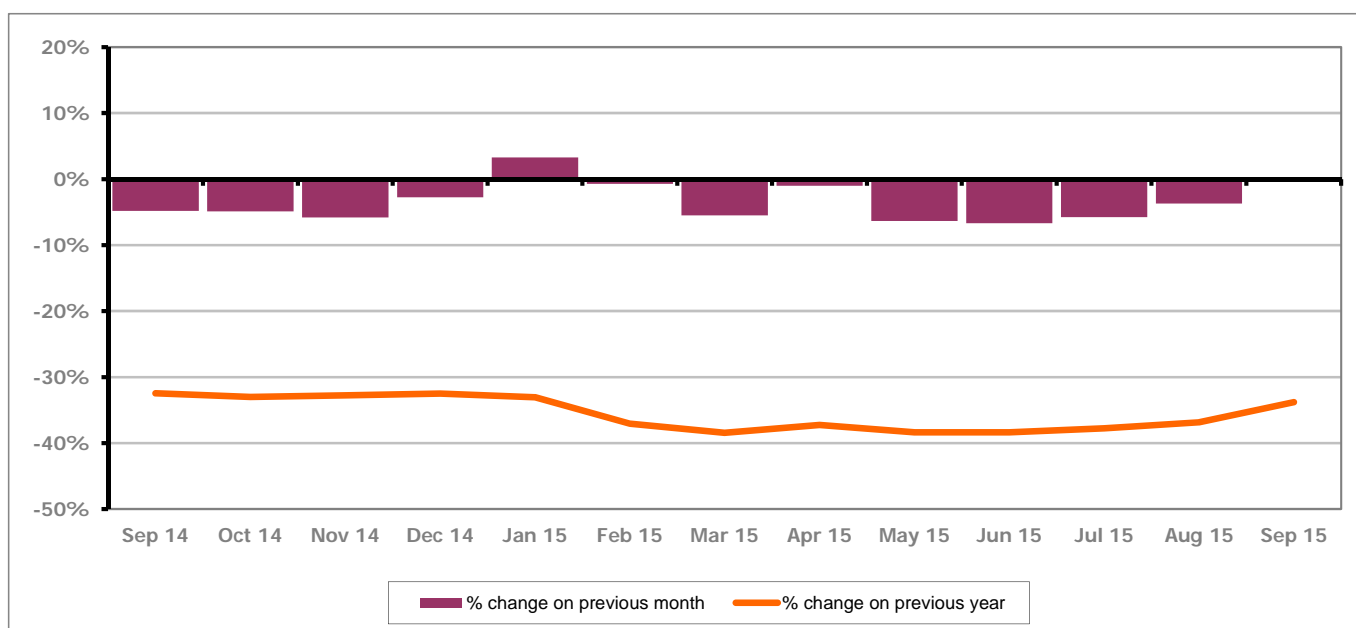


Figure 14 shows the monthly Job Seekers Allowance claimant count decreased by 0.2% since August 2015. The change on the previous year has increased between August and September 2015 to -33.8%.

## PART 5: Job Seekers Allowance - District and Ward

### 4.4 Gloucester City continued...

Figure 15: Job Seekers Allowance claimant rates across Gloucester City wards - September 2015

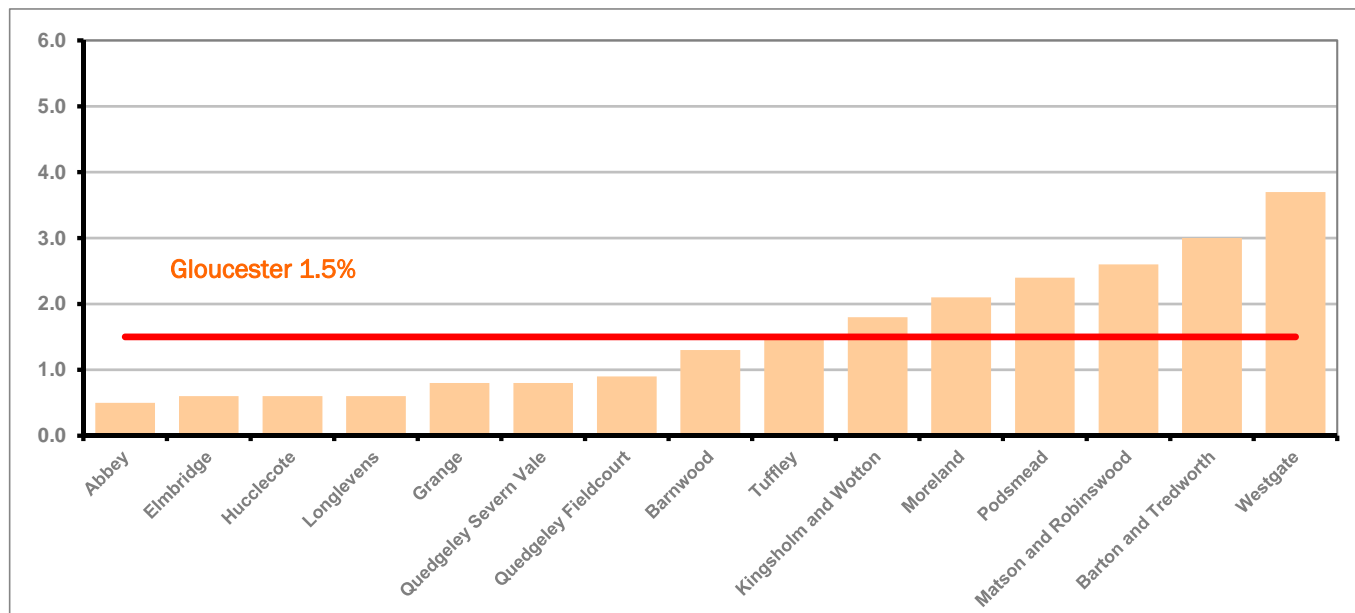
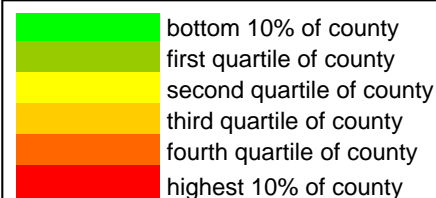


Figure 15 shows the Job Seekers Allowance claimant rates for Gloucester City district wards. The red line represents the average claimant rate across the City of 1.5%. Six wards lie above the average.

Table 8: Analysis of Job Seekers Allowance claimant count at Gloucester City ward level - September 2015

District	Ward	Rate	Rank*
Gloucester	Abbey	0.5	49
Gloucester	Elmbridge	0.6	60
Gloucester	Hucclecote	0.6	60
Gloucester	Longlevens	0.6	60
Gloucester	Grange	0.8	90
Gloucester	Quedgeley Severn Vale	0.8	90
Gloucester	Quedgeley Fieldcourt	0.9	102
Gloucester	Barnwood	1.3	121
Gloucester	Tuffley	1.5	127
Gloucester	Kingsholm and Wotton	1.8	134
Gloucester	Moreland	2.1	136
Gloucester	Podsmead	2.4	138
Gloucester	Matson and Robinswood	2.6	139
Gloucester	Barton and Tredworth	3.0	141
Gloucester	Westgate	3.7	142



\* 1 = "best" and 142 = "worst"

Table 8 shows overall Job Seekers Allowance claimant rates for Gloucester City wards and their position relative to all wards in Gloucestershire.

## PART 5: Job Seekers Allowance - District and Ward

### 4.5 Stroud District

#### Job Seekers Allowance claimant rate and claimant count

Figure 16: Stroud District Job Seekers Allowance claimant rate over the last year

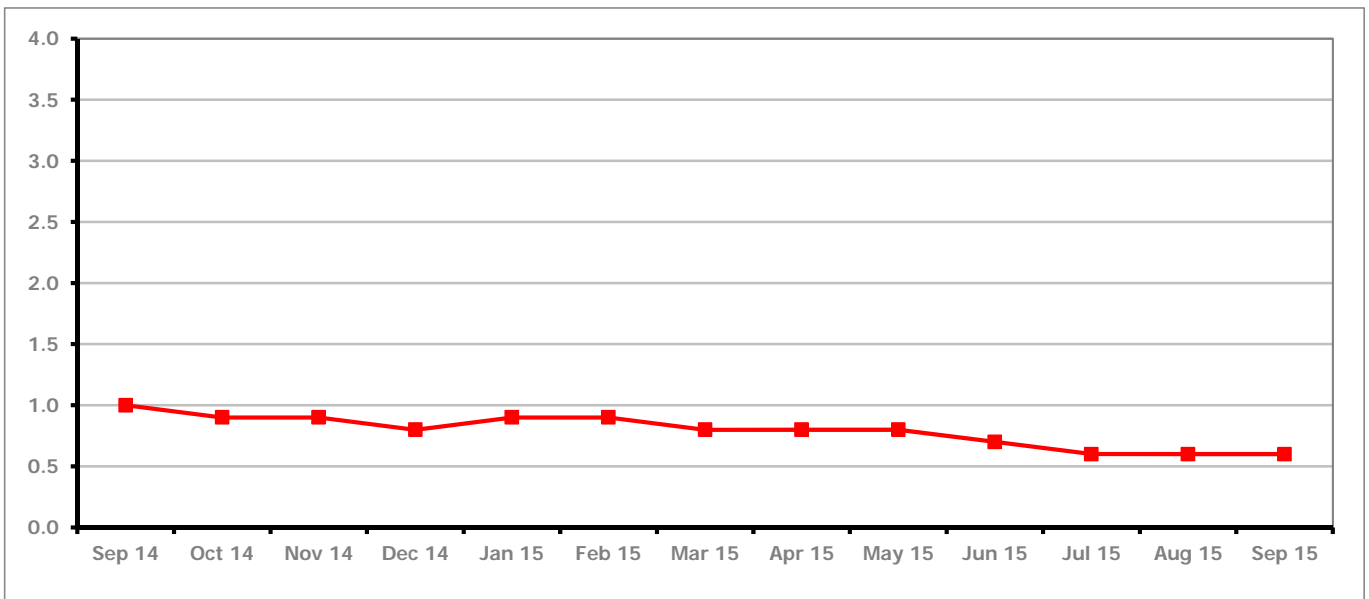


Figure 16 shows the Job Seekers Allowance claimant rate for Stroud remained the same in September 2015 at 0.6%.

Figure 17: Stroud District Job Seekers Allowance claimants - Month on Month and Year on Year change

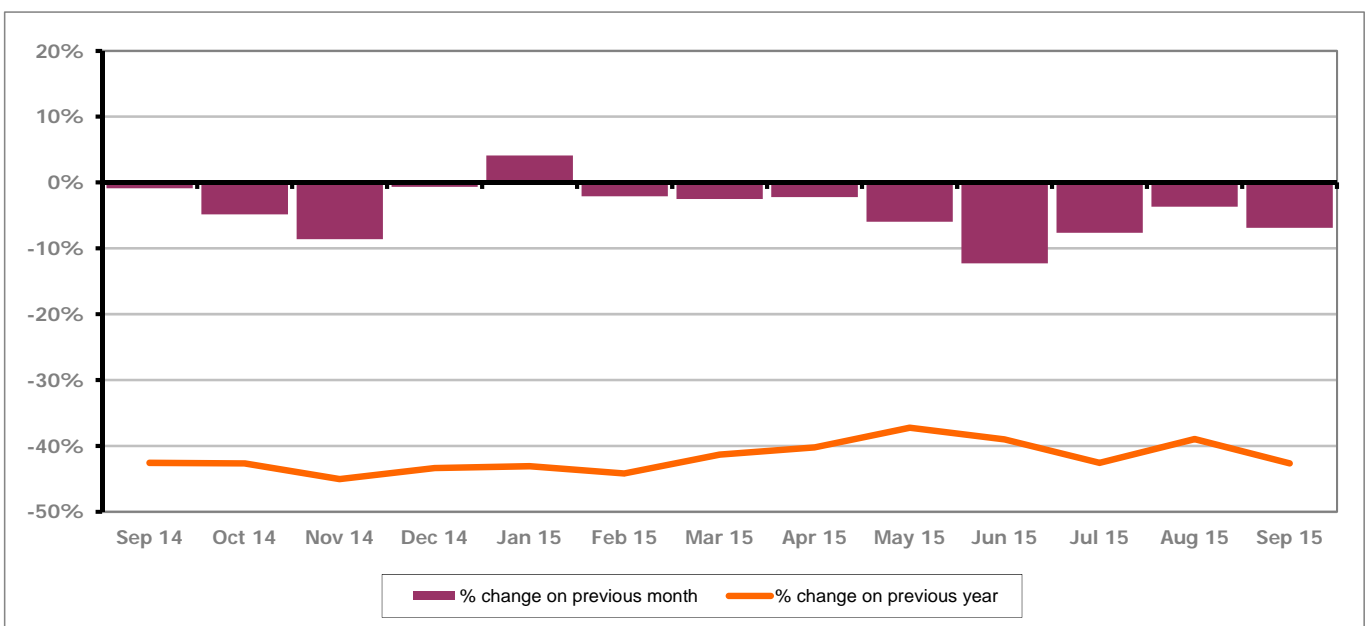


Figure 17 shows the monthly Job Seekers Allowance claimant count decreased by 6.9% since August 2015. The change on the previous year has decreased between August and September 2015 to -42.7%.



## PART 5: Job Seekers Allowance - District and Ward

### 4.5 Stroud District continued...

Figure 18: Job Seekers Allowance claimant rates across Stroud District wards - September 2015

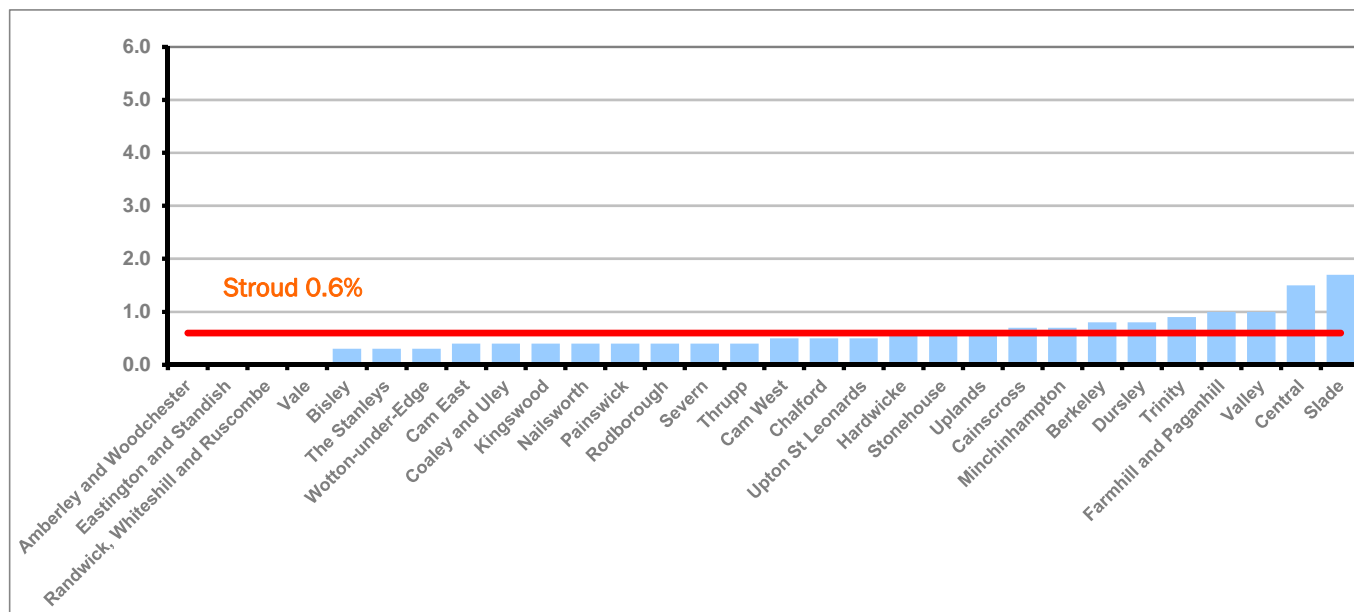
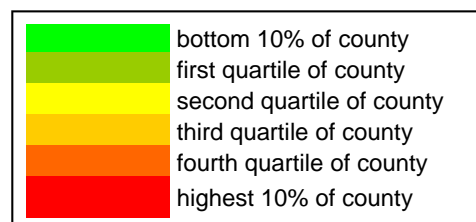


Figure 18 shows the Job Seekers Allowance claimant rates in Stroud District. The red line represents the average claimant rate across the District of 0.6%. Nine wards are above the average.

Table 9: Analysis of Job Seekers Allowance claimant count at Stroud District ward level - September 2015

District	Ward	Rate	Rank*
Stroud	Amberley and Woodchester	0.0	1
Stroud	Eastington and Standish	0.0	1
Stroud	Randwick, Whiteshill and Ruscombe	<0.3	1
Stroud	Vale	<0.3	1
Stroud	Bisley	0.3	13
Stroud	The Stanleys	0.3	13
Stroud	Wotton-under-Edge	0.3	13
Stroud	Cam East	0.4	31
Stroud	Coaley and Uley	0.4	31
Stroud	Kingswood	0.4	31
Stroud	Nailsworth	0.4	31
Stroud	Painswick	0.4	31
Stroud	Rodborough	0.4	31
Stroud	Severn	0.4	31
Stroud	Thrupp	0.4	31
Stroud	Cam West	0.5	49
Stroud	Chalford	0.5	49
Stroud	Upton St Leonards	0.5	49
Stroud	Hardwicke	0.6	60
Stroud	Stonehouse	0.6	60
Stroud	Uplands	0.6	60
Stroud	Cainscross	0.7	78
Stroud	Minchinhampton	0.7	78
Stroud	Berkeley	0.8	90
Stroud	Dursley	0.8	90
Stroud	Trinity	0.9	102
Stroud	Farmhill and Paganhill	1.0	110
Stroud	Valley	1.0	110
Stroud	Central	1.5	127
Stroud	Slade	1.7	130



\* 1 = "best" and 142 = "worst"

Table 9 shows overall Job Seekers Allowance claimant rates for Stroud District wards and their position relative to all wards in Gloucestershire.

## PART 5: Job Seekers Allowance - District and Ward

### 4.6 Tewkesbury District

#### Job Seekers Allowance claimant rate and claimant count

Figure 19: Tewkesbury District Job Seekers Allowance claimant rate over the last year

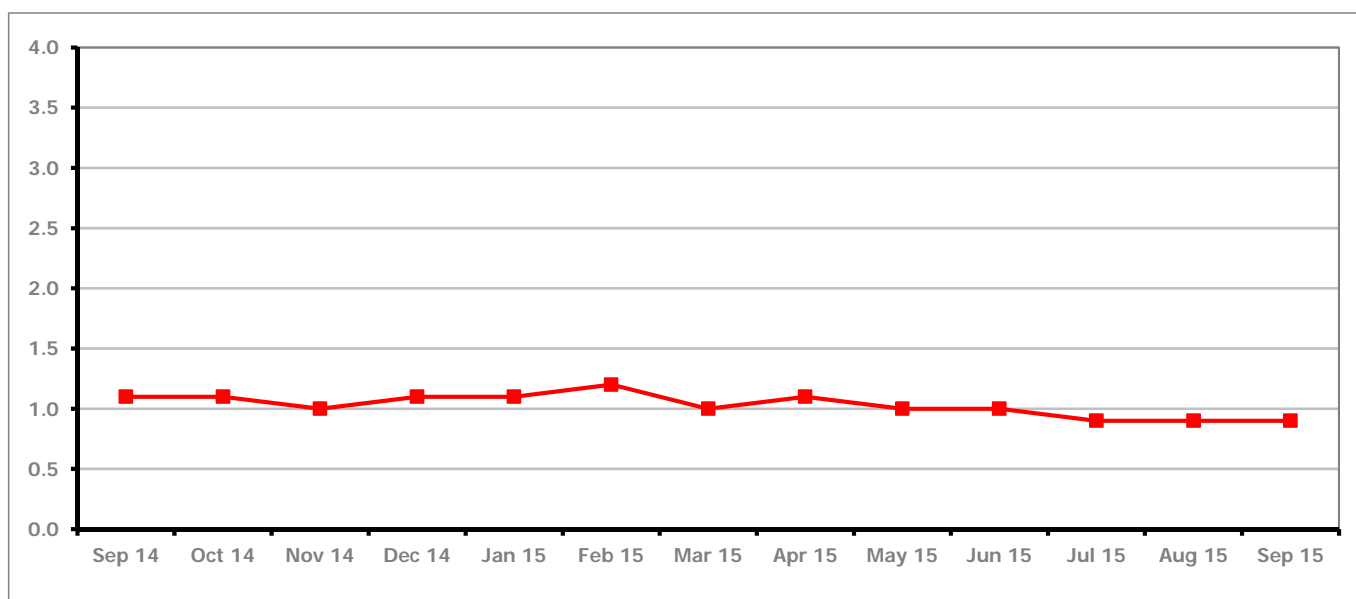


Figure 19 shows the Job Seekers Allowance claimant rate for Tewkesbury District remained the same in September 2015 at 0.9%

Figure 20: Tewkesbury District Job Seekers Allowance claimants - Month on Month and Year on Year change

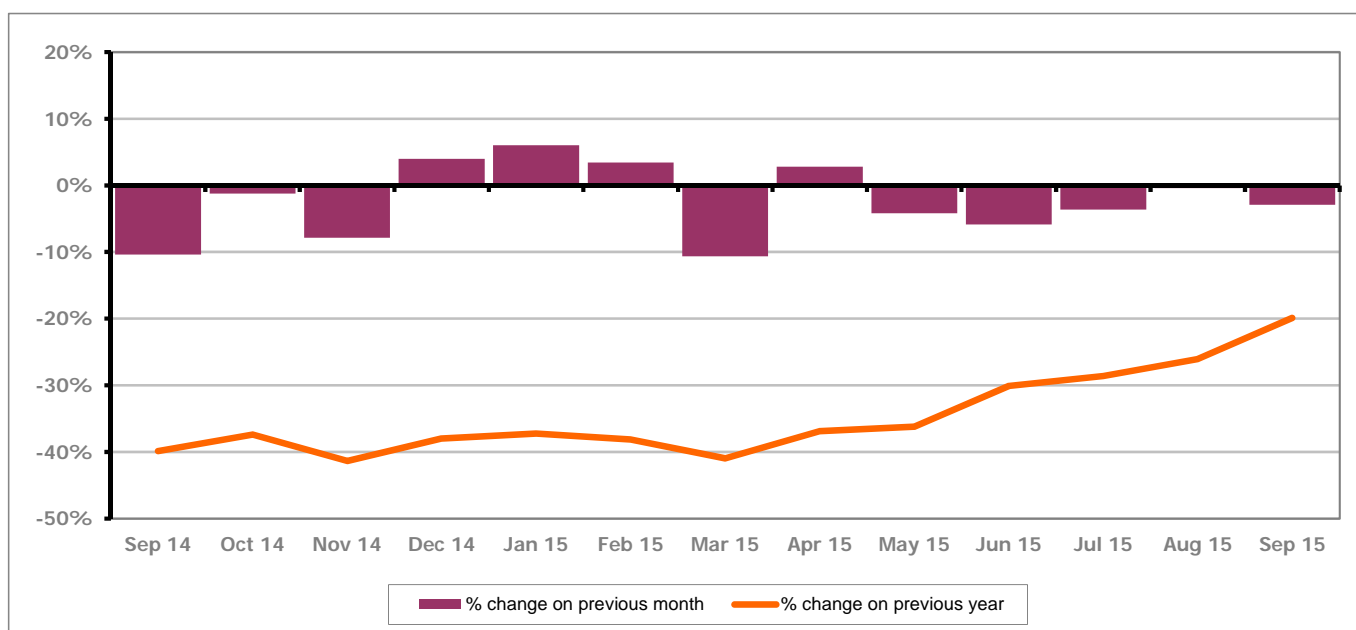


Figure 20 shows that the monthly Job Seekers Allowance claimant count decreased by 2.9% since August 2015. The change on the previous year increased between August and September 2015 to -19.9%.

## PART 5: Job Seekers Allowance - District and Ward

### 4.6 Tewkesbury District continued...

Figure 21: Job Seekers Allowance Claimant rates across Tewkesbury District wards - September 2015

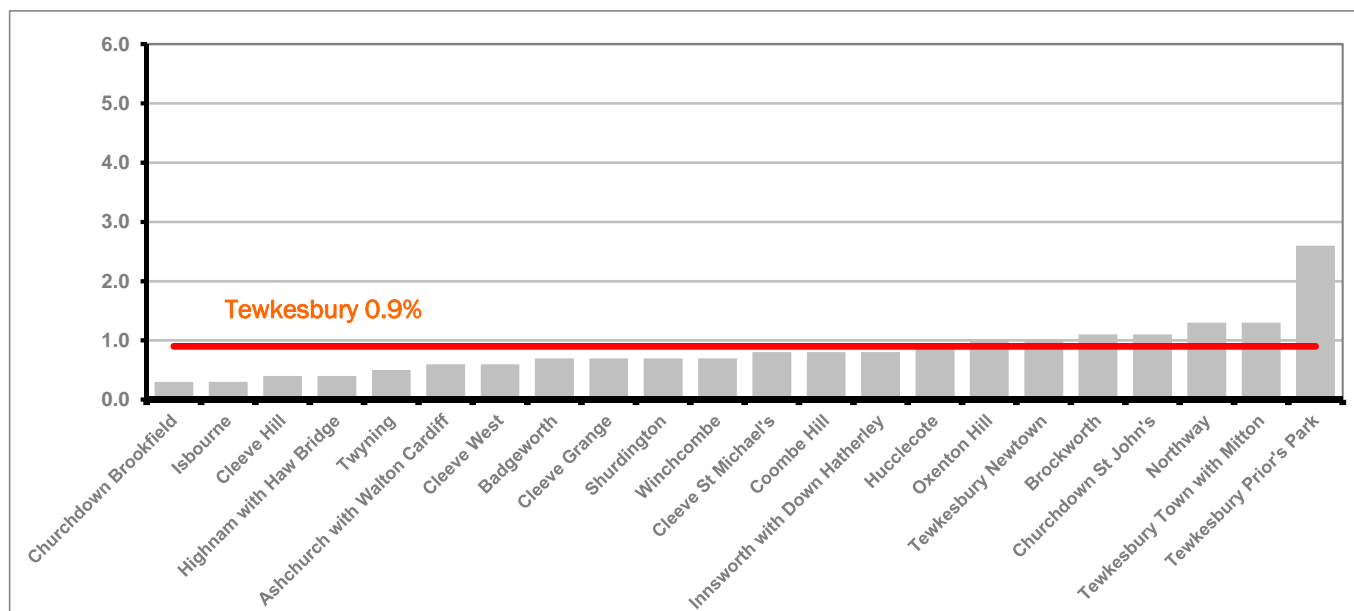


Figure 21 shows the Job Seekers Allowance claimant rates in Tewkesbury District wards. The red line represents the average claimant rate across the District of 0.9% and seven wards are above the average.

Table 10: Analysis of Job Seekers Allowance claimant count at Tewkesbury ward level - September 2015

District	Ward	Rate	Rank*
Tewkesbury	Churchdown Brookfield	0.3	13
Tewkesbury	Isbourne	0.3	13
Tewkesbury	Cleeve Hill	0.4	31
Tewkesbury	Highnam with Haw Bridge	0.4	31
Tewkesbury	Twynning	0.5	49
Tewkesbury	Ashchurch with Walton Cardiff	0.6	60
Tewkesbury	Cleeve West	0.6	60
Tewkesbury	Badgeworth	0.7	78
Tewkesbury	Cleeve Grange	0.7	78
Tewkesbury	Shurdington	0.7	78
Tewkesbury	Winchcombe	0.7	78
Tewkesbury	Cleeve St Michael's	0.8	90
Tewkesbury	Coombe Hill	0.8	90
Tewkesbury	Innsworth with Down Hatherley	0.8	90
Tewkesbury	Hucclecote	0.9	102
Tewkesbury	Oxenton Hill	1.0	110
Tewkesbury	Tewkesbury Newtown	1.0	110
Tewkesbury	Brockworth	1.1	118
Tewkesbury	Churchdown St John's	1.1	118
Tewkesbury	Northway	1.3	121
Tewkesbury	Tewkesbury Town with Mitton	1.3	121
Tewkesbury	Tewkesbury Prior's Park	2.6	139

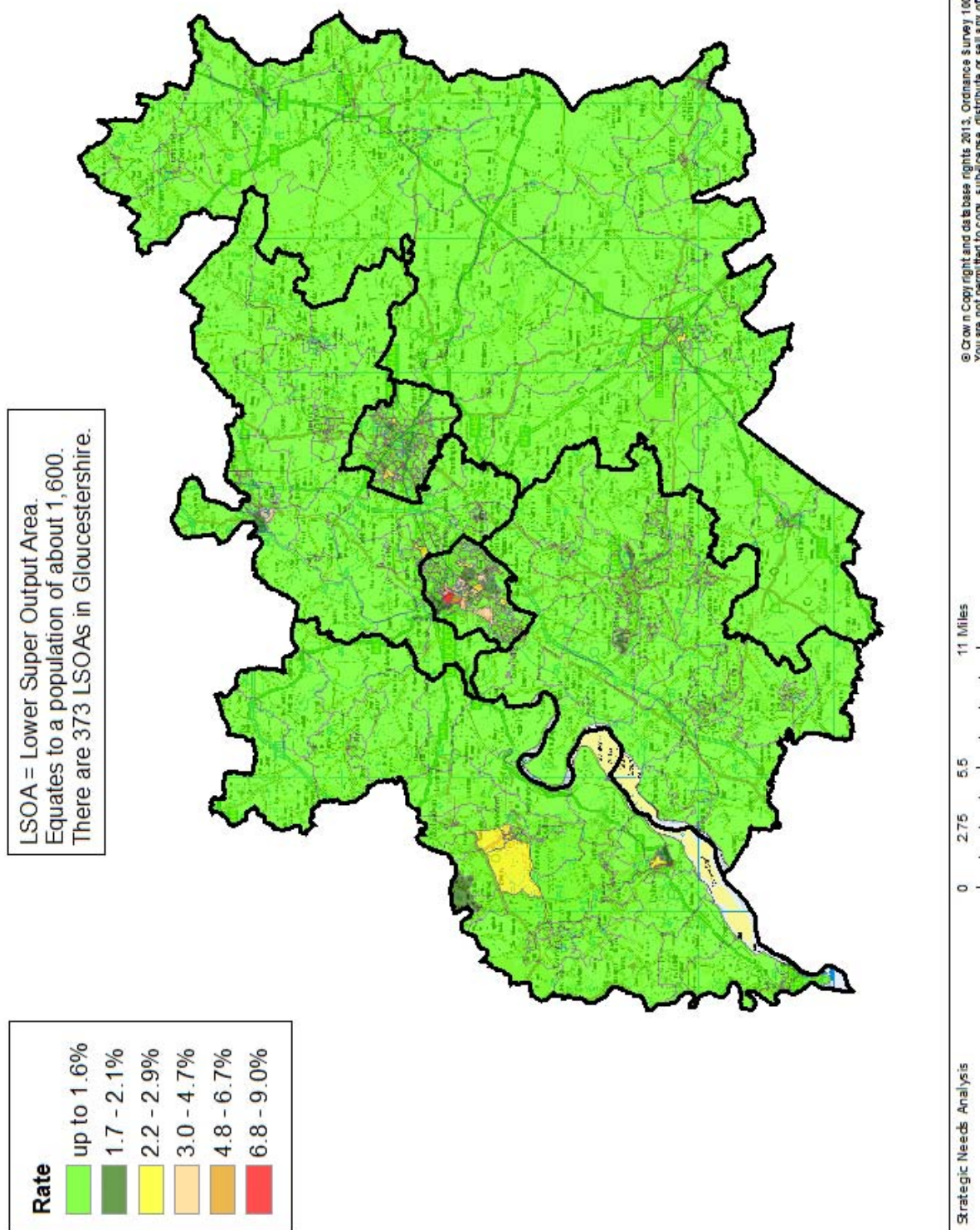
bottom 10% of county  
 first quartile of county  
 second quartile of county  
 third quartile of county  
 fourth quartile of county  
 highest 10% of county

\* 1 = "best" and 142 = "worst"

Table 10 shows overall Job Seekers Allowance claimant rates for Tewkesbury District wards and their position relative to all wards in Gloucestershire.

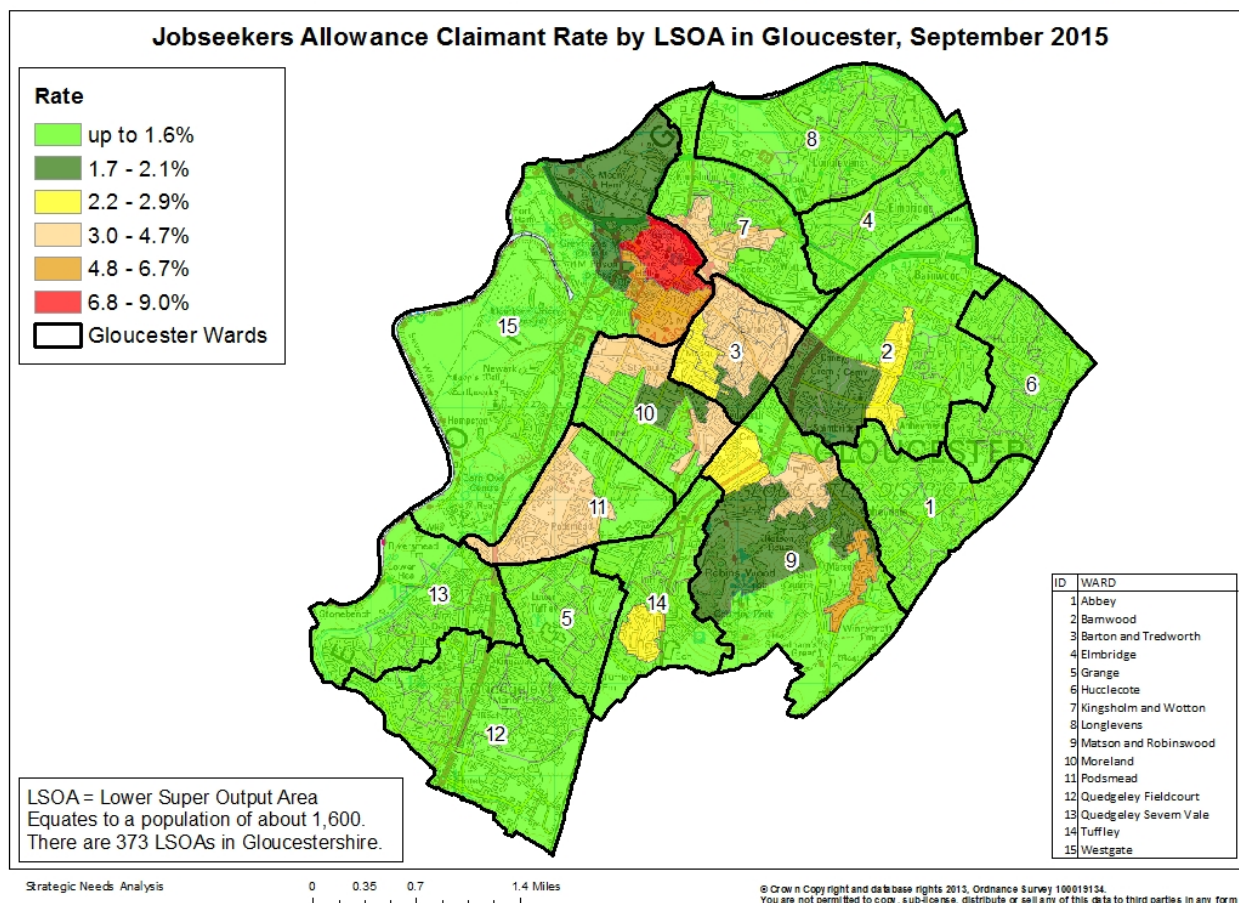
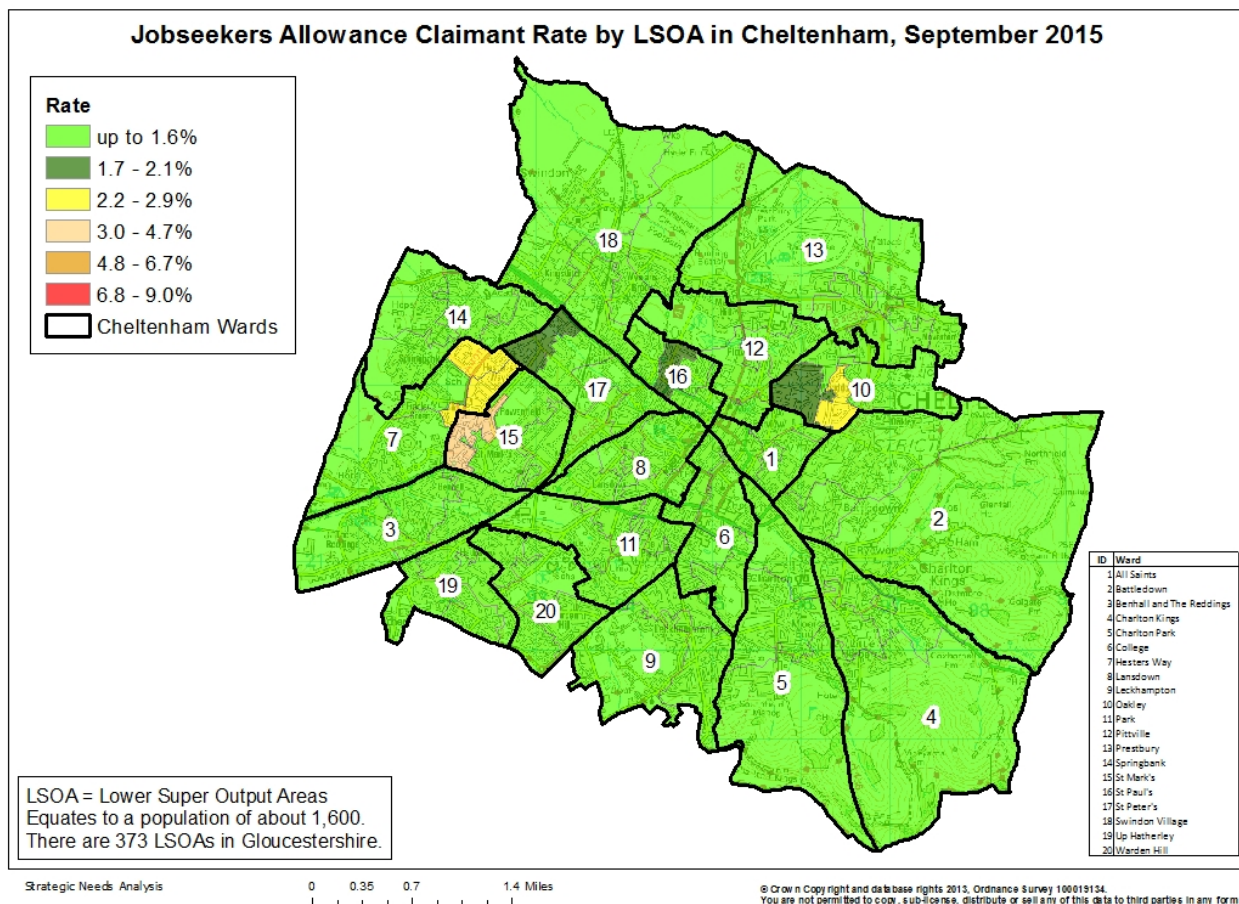
## PART 6: Map showing distribution of Job Seekers Allowance claimant rate across Gloucestershire

**Jobseekers Allowance Claimant Rate by LSOA in Gloucestershire, September 2015**





## PART 6: Map showing distribution of Job Seekers Allowance claimant rate across Gloucestershire



## PART 7: Youth Job Seekers Allowance claimants - (18-24 year olds)

### Youth Job Seekers Allowance claimant rate and claimant count

The Job Seekers Allowance claimant rate for young people is higher than for the working age (16-64) population with 1.3% of 18-24 year olds in Gloucestershire claiming Job Seekers Allowance (0.9% for working age).

Figure 22: Youth Job Seekers Allowance claimant rate for Gloucestershire, the South West and UK over the past year

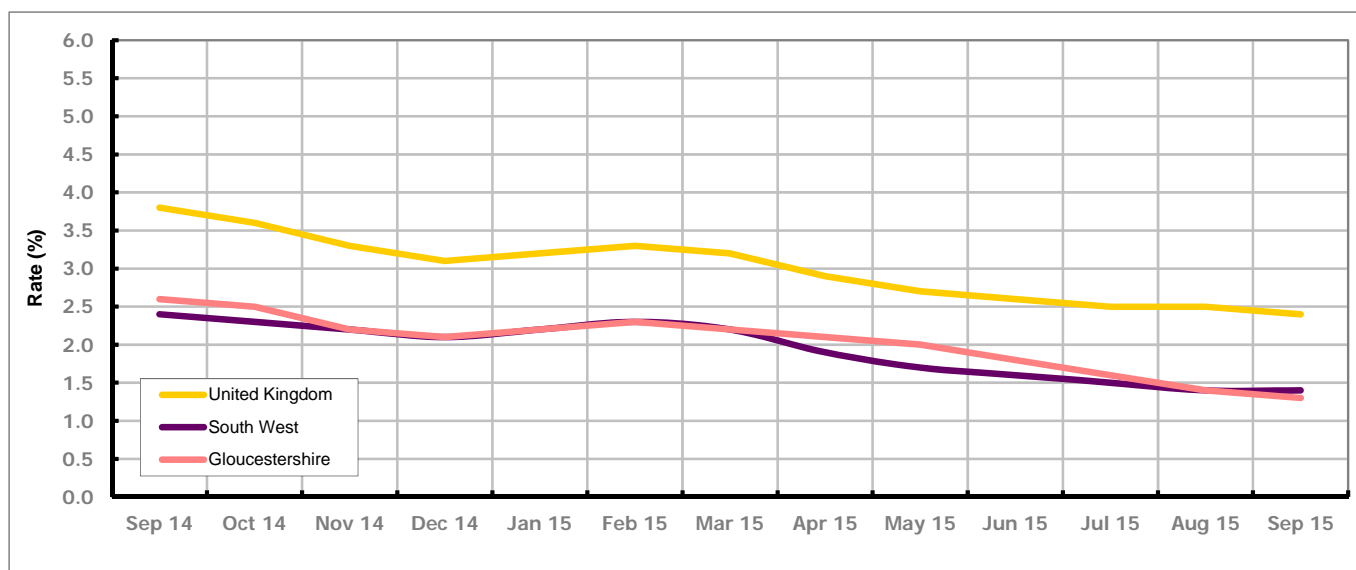


Figure 22 shows Gloucestershire's 18-24 Job Seekers Allowance claimant rate is 0.1% lower than the South West average of 1.4%, and 1.1% lower than the UK average of 2.4%

Figure 23: Job Seekers Allowance claimant count for Gloucestershire over the past year

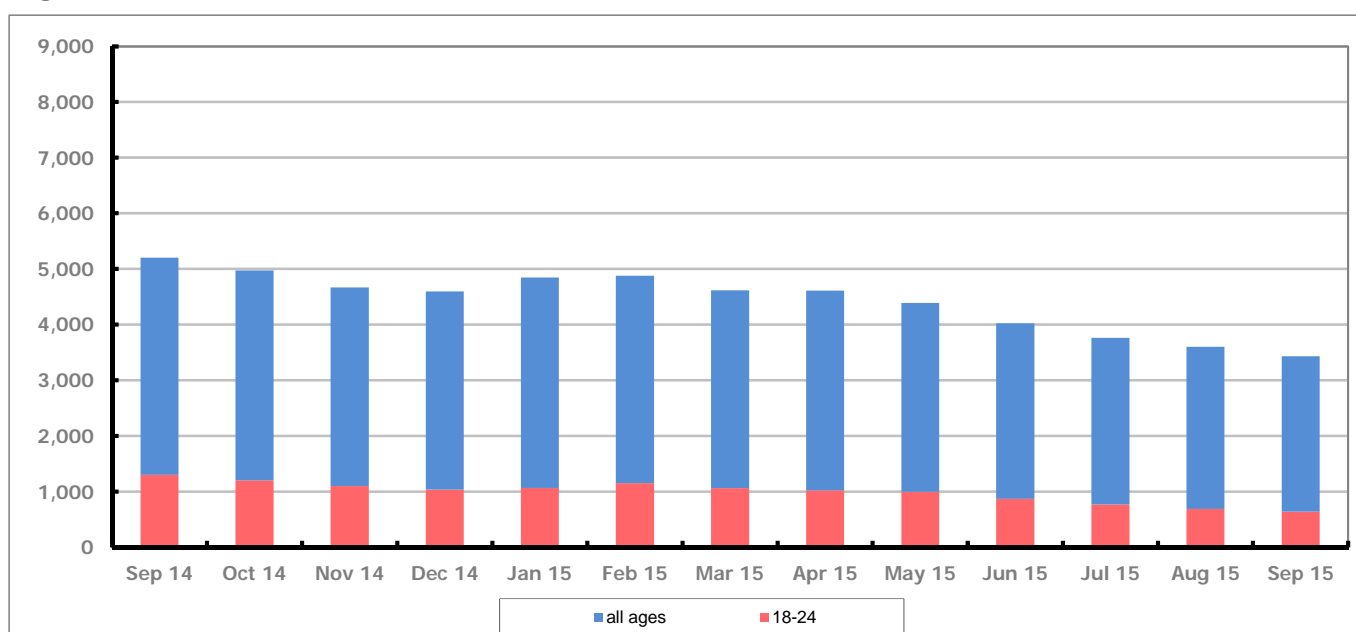


Figure 23 shows that in September 2015, 640 people aged 18-24 were claiming Job Seekers Allowance in Gloucestershire, this represents 18.6% of total working age claimants.

## PART 7: Youth Job Seekers Allowance claimants - (18-24 year olds)

### Youth Job Seekers Allowance claimant rate and claimant count

Figure 24: Youth Job Seekers Allowance Claimant Rate for Gloucestershire, the South West and UK over the past year

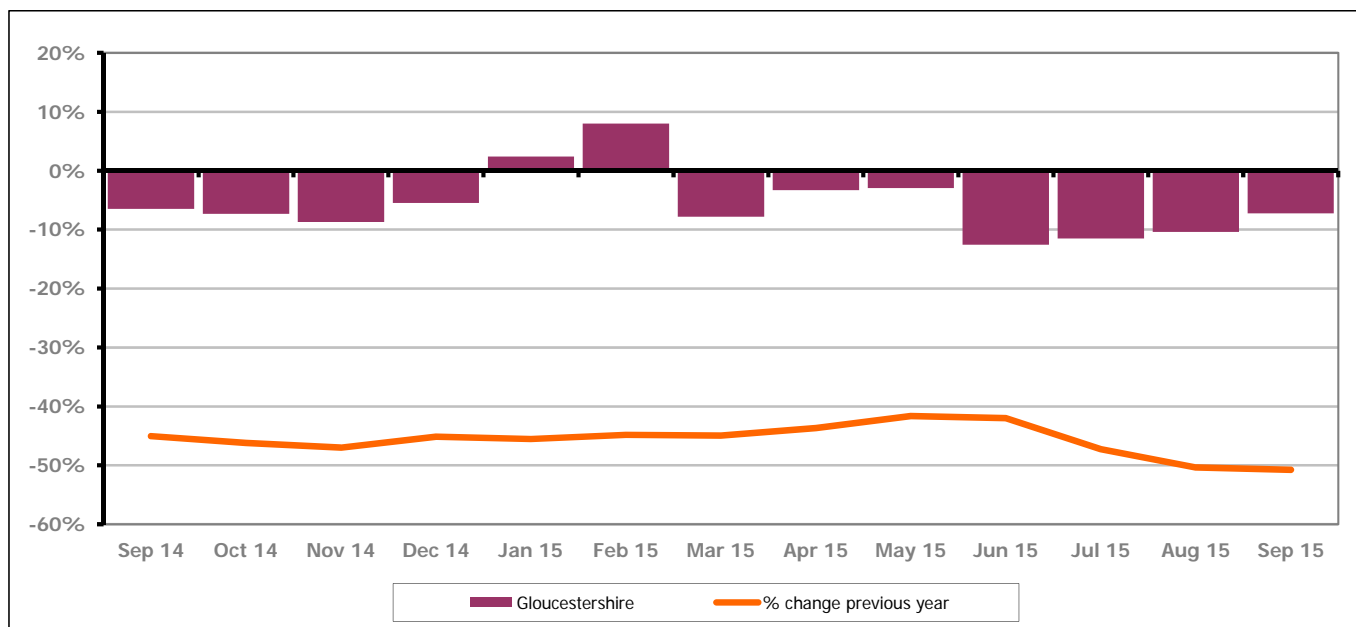


Figure 24 shows the number of young Job Seekers Allowance claimants decreased in September 2015 by 7.2% this represented 50 people. Over the last year the number of young Job Seekers Allowance claimants fell by 50.8% or 660 people.

### Youth unemployment and duration of claim

Figure 25: Duration of claim in the 18-24 year age group

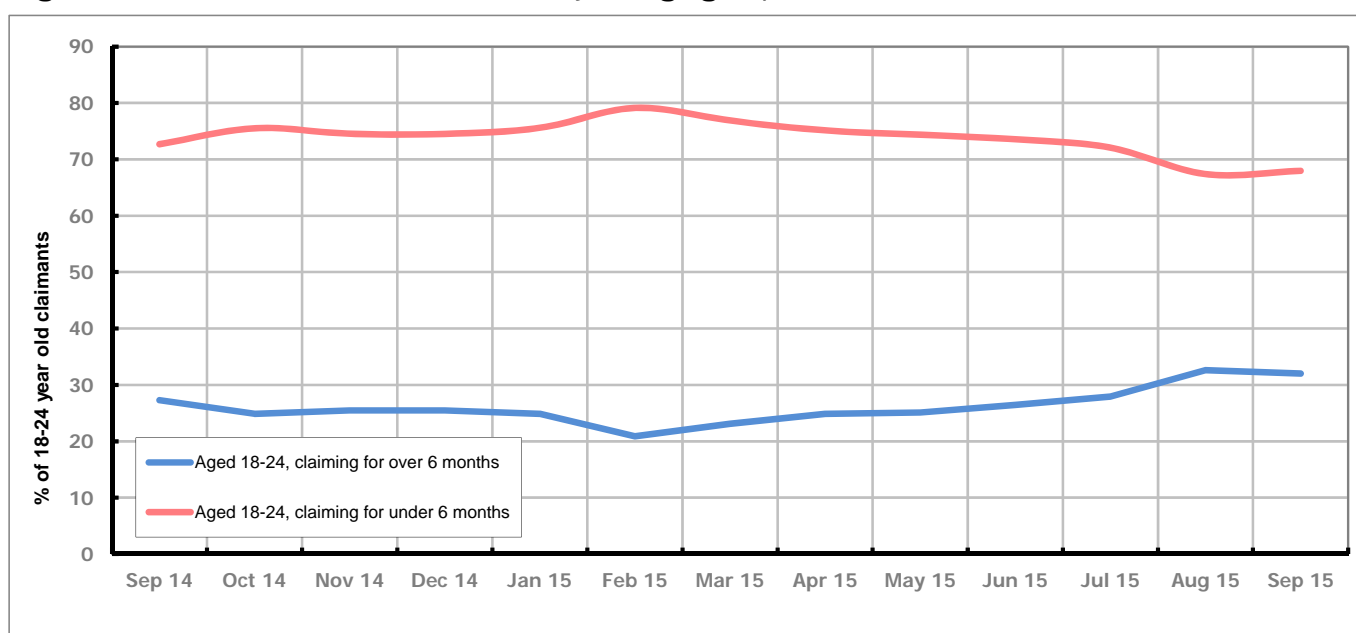


Figure 25 shows the proportion of 18-24 year olds claiming Job Seekers Allowance for less than six months increased from 67.4% of 18-24 year old claimants in August to 68.0% in September 2015. During the same period those claiming for more then six months increased from 32.6% to 32.0%.

## PART 7: Young People not in Education, Employment or Training (NEET) in Gloucestershire

Data provided by Gloucestershire Youth Support Team on the situation of young people (16-18) in Gloucestershire who are not in education, employment or formal training.

Gloucestershire Youth Support Team is required to report performance with the 16-18 age range against nationally defined criteria for counting the NEET group. The NEET group includes young people actively seeking education, employment or training as well as those young people who are either not yet ready or who are unable to access these opportunities because of their personal circumstances. The figures quoted below include young people in both of these categories.

### Summary

At the end of September 2015 there were 455 young people aged 16-18 not in education, employment or training in Gloucestershire and this figure translates into an adjusted (\*) 16-18 NEET population of 5.16%. The total number of NEET young people decreased by 4 in September 2015 compared to August 2015. Three districts had a decrease in their figures, two had an increase and one district stayed the same.

### Total NEET Group by District Area

#### September 2015 NEET data

	Cheltenham	Cotswold	Forest	Gloucester	Stroud	Tewkesbury	Total
<b>Total NEET</b>	84	56	42	150	57	66	455
<b>Cohort</b>	2960	2824	2692	4799	3527	2327	19129
<b>% NEET</b>	2.84	1.98	1.56	3.13	1.62	2.84	5.16

If you would like to receive any further information on Gloucestershire's NEET strategy then please contact [Ruth.Critchlow@Prospects.co.uk](mailto:Ruth.Critchlow@Prospects.co.uk) or telephone 01452 426900.

(\*) Adjustment includes a proportion of young people aged 16-18 whose outcomes are not-known to Gloucestershire Youth Support Team.